

INFORMATION SYSTEMS

RADARSAT-2 High Resolution Multi-temporal Coverage of Tropical Forest XF and MFW Archive Density

www.mdacorporation.com

RESTRICTION ON USE, PUBLICATION OR DISCLOSURE OF PROPRIETARY INFORMATION

This document contains information proprietary to MACDONALD, DETTWILER AND ASSOCIATES LTD. (MDA), to its subsidiaries, or to a third party to which MDA may have a legal obligation to protect such information from unauthorized disclosure, use or duplication. Any disclosure, use or duplication of this document or of any of the information contained herein for other than the specific purpose for which it was disclosed is expressly prohibited, except as MDA may agree in writing.

Image Credits and Disclaimer Language

RESTRICTION ON USE, PUBLICATION OR DISCLOSURE OF PROPRIETARY CONTENT

This presentation includes content that is proprietary to MacDonald, Dettwiler and Associates Ltd. (“MDA”), its subsidiaries, and third parties. Do not disclose, use, or duplicate this document or of any of its content.

MDA provides this presentation for general information purposes only, and this presentation does not constitute an offer, promise, warranty or guarantee of performance. MDA and its licensors do not authorize, and disclaim all liability for, any actions taken in reliance on this presentation.

The products depicted are subject to change, and are not necessarily production representative. Actual results may vary depending on certain events or conditions.

COPYRIGHT © 2016 MacDonald, Dettwiler and Associates Ltd., and third parties whose content has been used by permission. All rights reserved.

RADARSAT-2 Data and Products © MacDonald, Dettwiler and Associates Ltd (year of acquisition or range of years to span entire presentation). All Rights Reserved. RADARSAT is an official mark of the Canadian Space Agency. Page(s) XX

RADARSAT Data © Canadian Space Agency/Agence Spatiale Canadienne (year of acquisition or range of years). All Rights Reserved. Page(s) XX

GENERAL ACKNOWLEDGEMENTS

Certain images contained in this document are property of third parties:

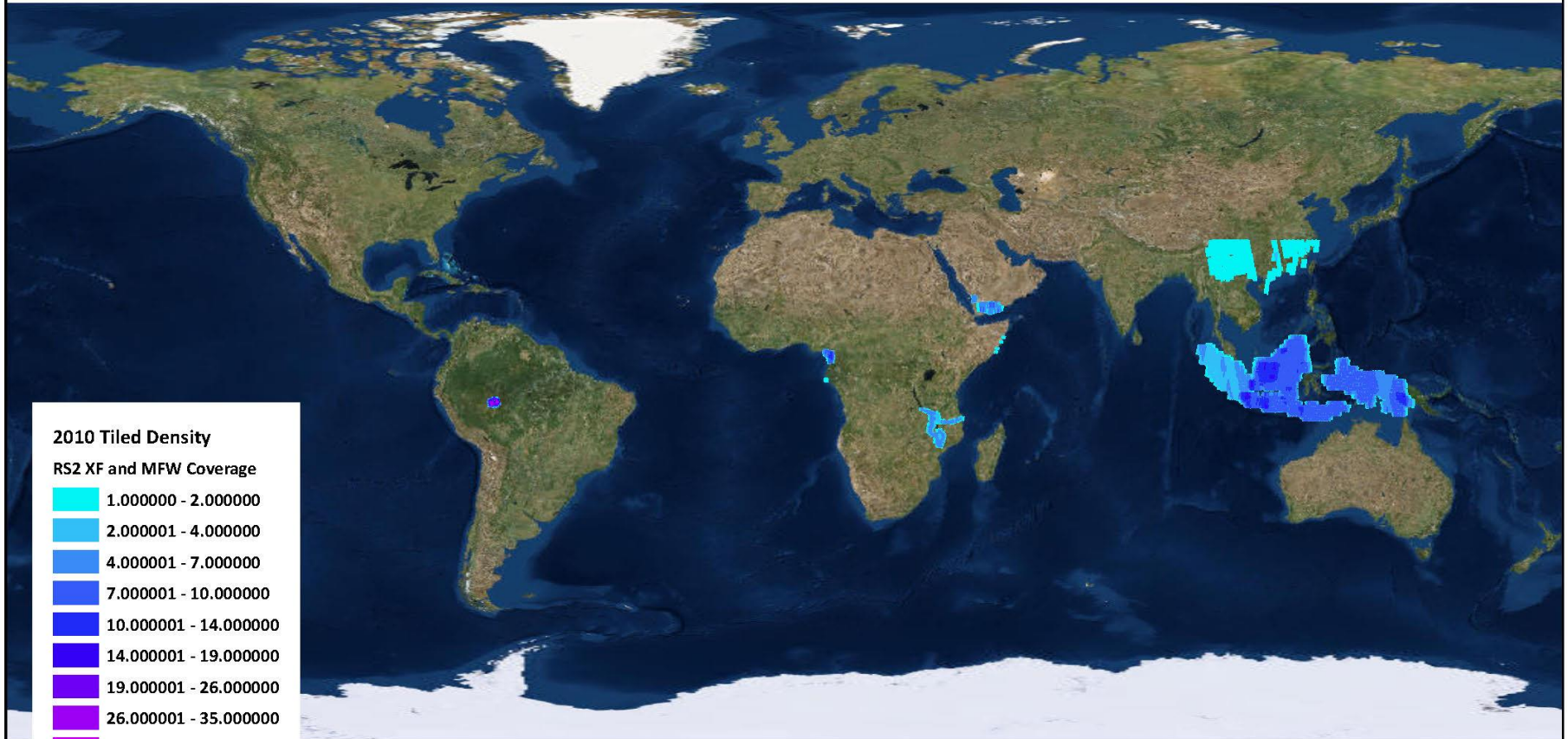
Image of [•] on P.[•]. COPYRIGHT © [•]. All rights reserved.

Image of [•] on P.[•]. COPYRIGHT © [•]. All rights reserved.

RADARSAT-2 Archive Density Maps by year

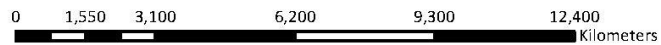
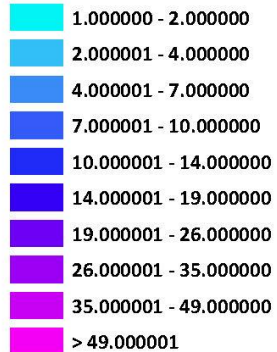
- The following eight density maps represent the MFW and XF archive density from 30 degrees North to 30 degrees South
- The first seven density maps are broken down by year (from 2010 to 2016)
- The density map for 2016 takes into account only MFW and XF archive Radarsat-2 imagery collected from January to July 17th of 2016
- The eighth density map takes into account all MFW and XF archive Radarsat-2 imagery collected up to July 17th of 2016

2010 Tiled Archive Density, 30 degrees North to 30 degrees South



2010 Tiled Density

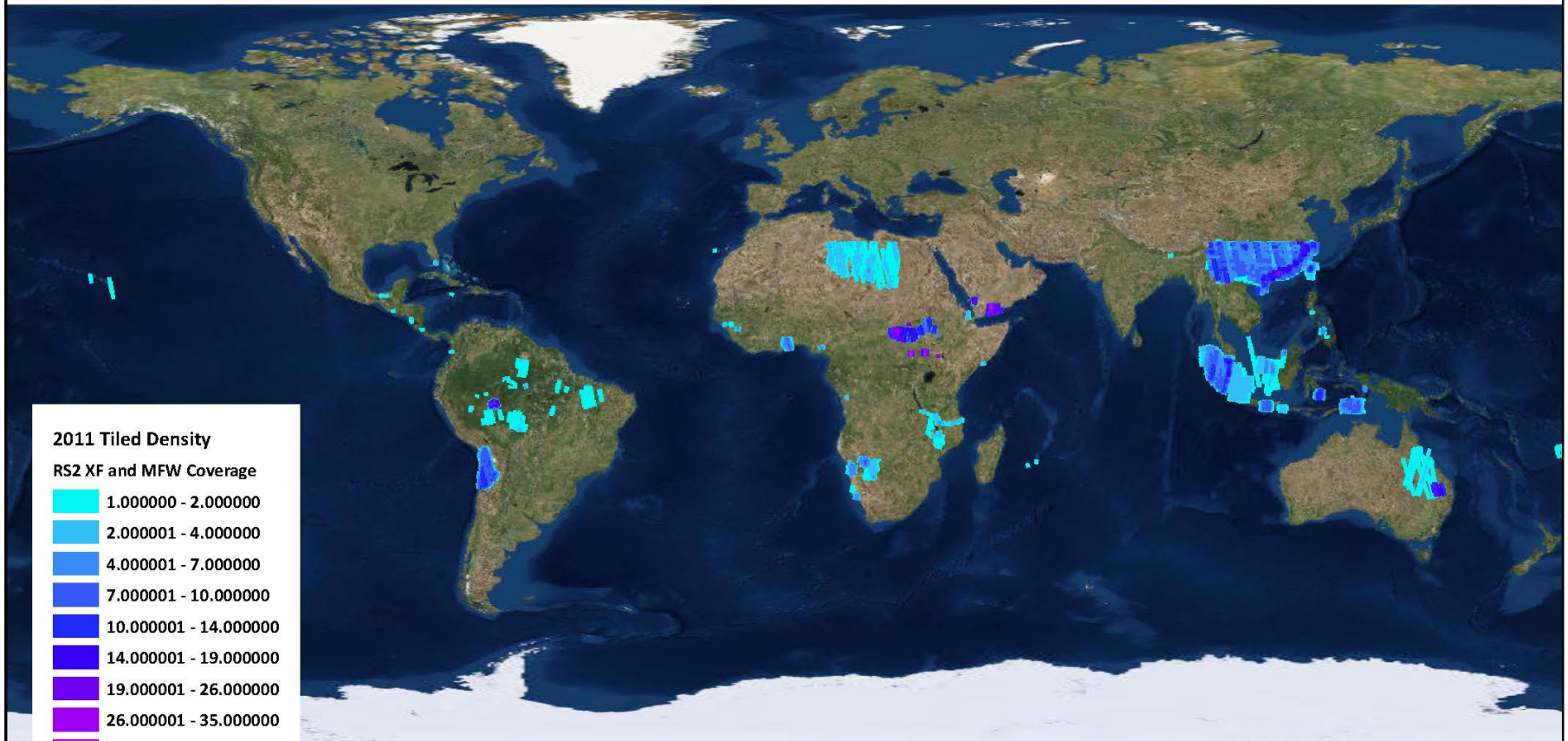
RS2 XF and MFW Coverage



Use, duplication or disclosure of this document or any of the information or images contained herein is subject to the restrictions on the title page of this document. COPYRIGHT ©2016 MDA

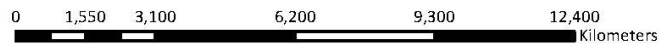
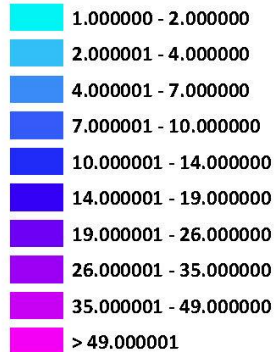
Source: Esri, DigitalGlobe, GeoEye, i-cubed, Earthstar Geographics, CNES/Airbus DS, USDA, USGS, AEX, Getmapping, Aerogrid, IGN, IGP, swisstopo, and the GIS User Community

2011 Tiled Archive Density, 30 degrees North to 30 degrees South



2011 Tiled Density

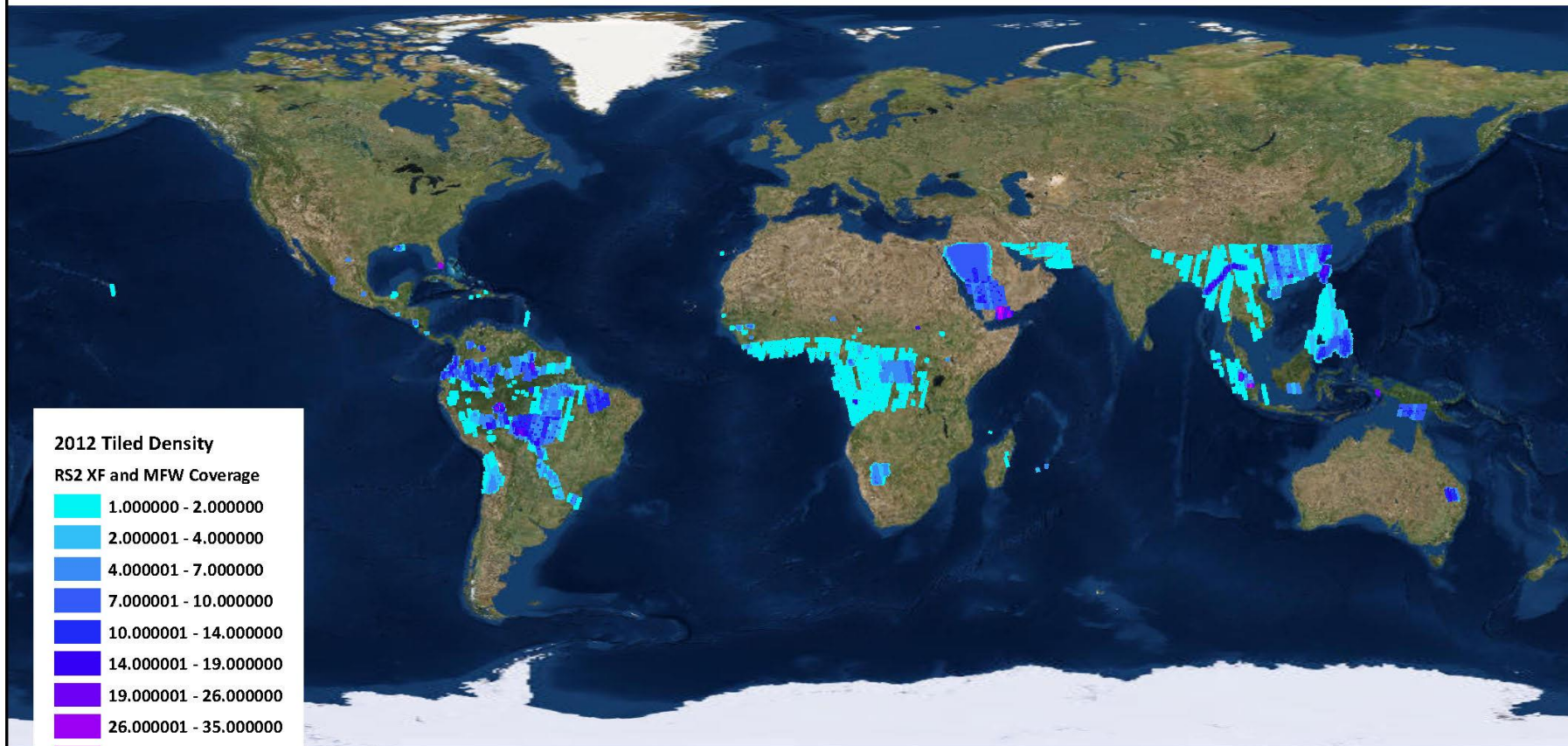
RS2 XF and MFW Coverage



Use, duplication or disclosure of this document or any of the information or images contained herein is subject to the restrictions on the title page of this document. COPYRIGHT ©2016 MDA

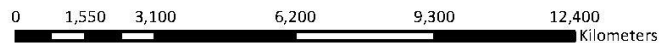
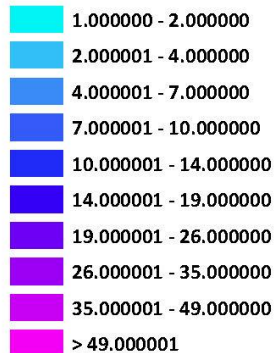
Source: Esri, DigitalGlobe, GeoEye, i-cubed, Earthstar Geographics, CNES/Airbus DS, USDA, USGS, AEX, Getmapping, Aerogrid, IGN, IGP, swisstopo, and the GIS User Community

2012 Tiled Archive Density, 30 degrees North to 30 degrees South



2012 Tiled Density

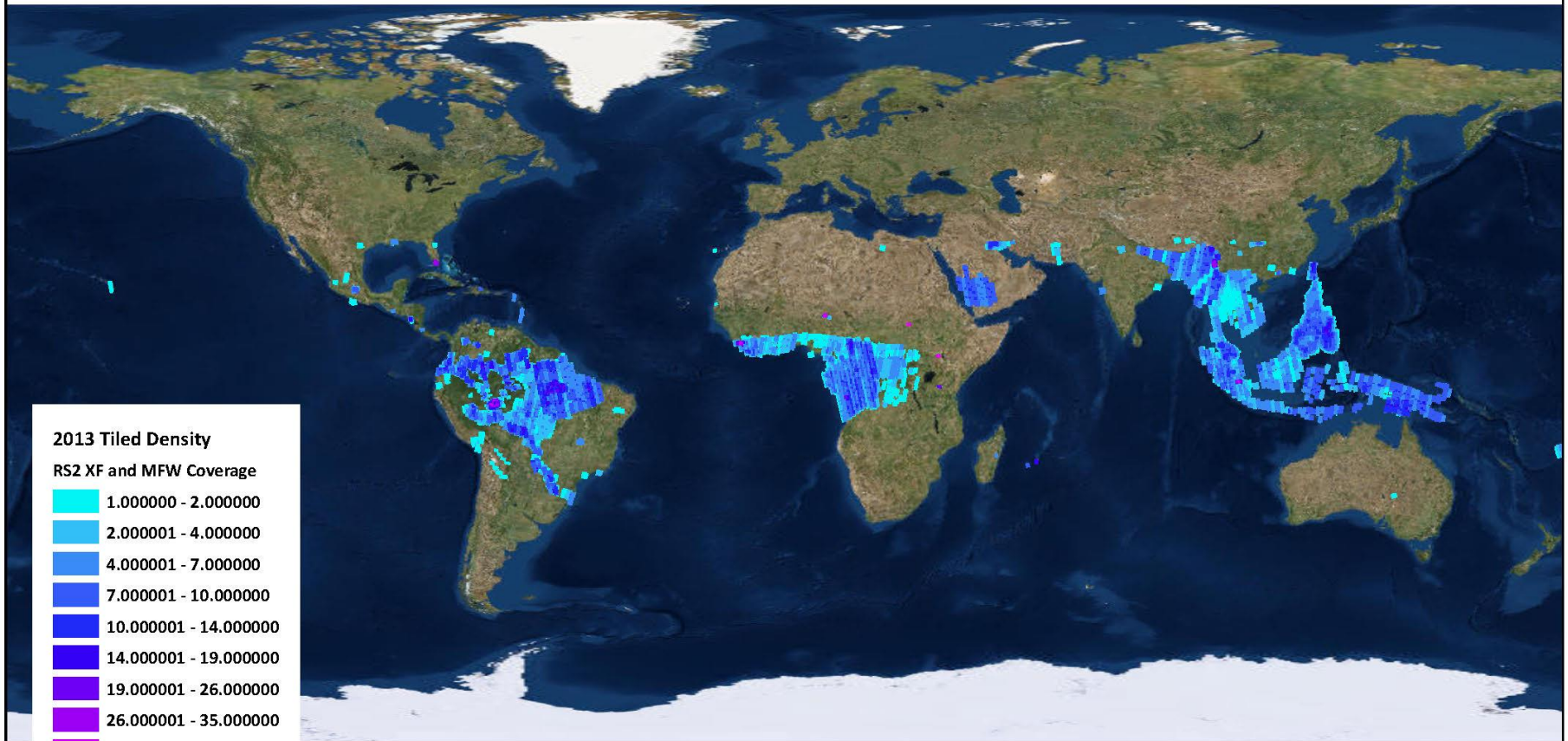
RS2 XF and MFW Coverage



Use, duplication or disclosure of this document or any of the information or images contained herein is subject to the restrictions on the title page of this document. COPYRIGHT ©2016 MDA

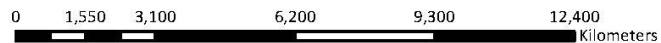
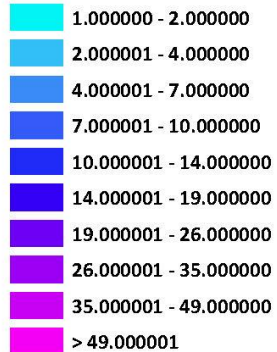
Source: Esri, DigitalGlobe, GeoEye, i-cubed, Earthstar Geographics, CNES/Airbus DS, USDA, USGS, AEX, Getmapping, Aerogrid, IGN, IGP, swisstopo, and the GIS User Community

2013 Tiled Archive Density, 30 degrees North to 30 degrees South



2013 Tiled Density

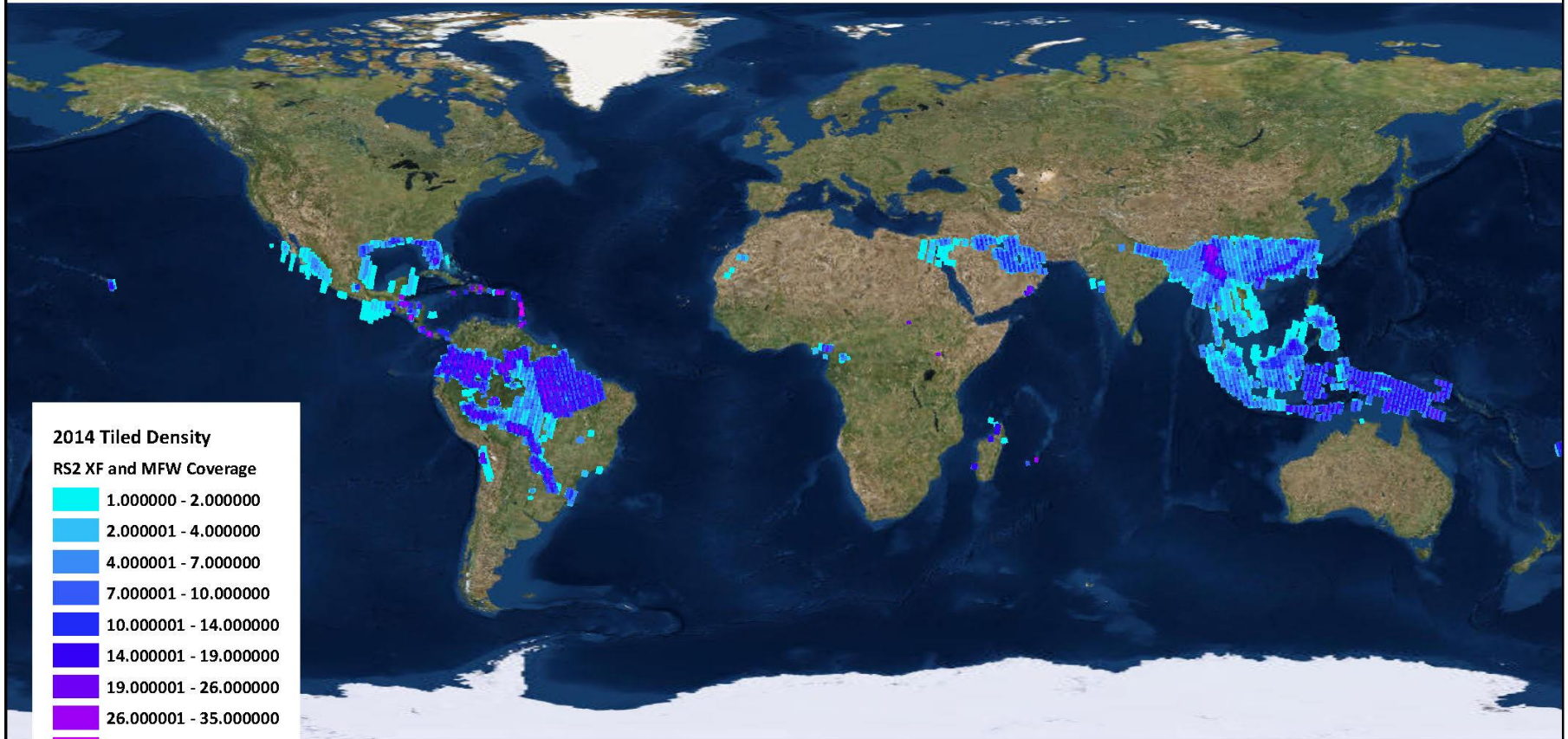
RS2 XF and MFW Coverage



Use, duplication or disclosure of this document or any of the information or images contained herein is subject to the restrictions on the title page of this document. COPYRIGHT ©2016 MDA

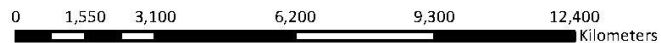
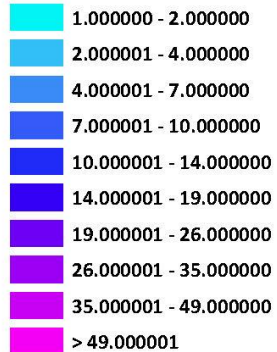
Source: Esri, DigitalGlobe, GeoEye, i-cubed, Earthstar Geographics, CNES/Airbus DS, USDA, USGS, AEX, Getmapping, Aerogrid, IGN, IGP, swisstopo, and the GIS User Community

2014 Tiled Archive Density, 30 degrees North to 30 degrees South



2014 Tiled Density

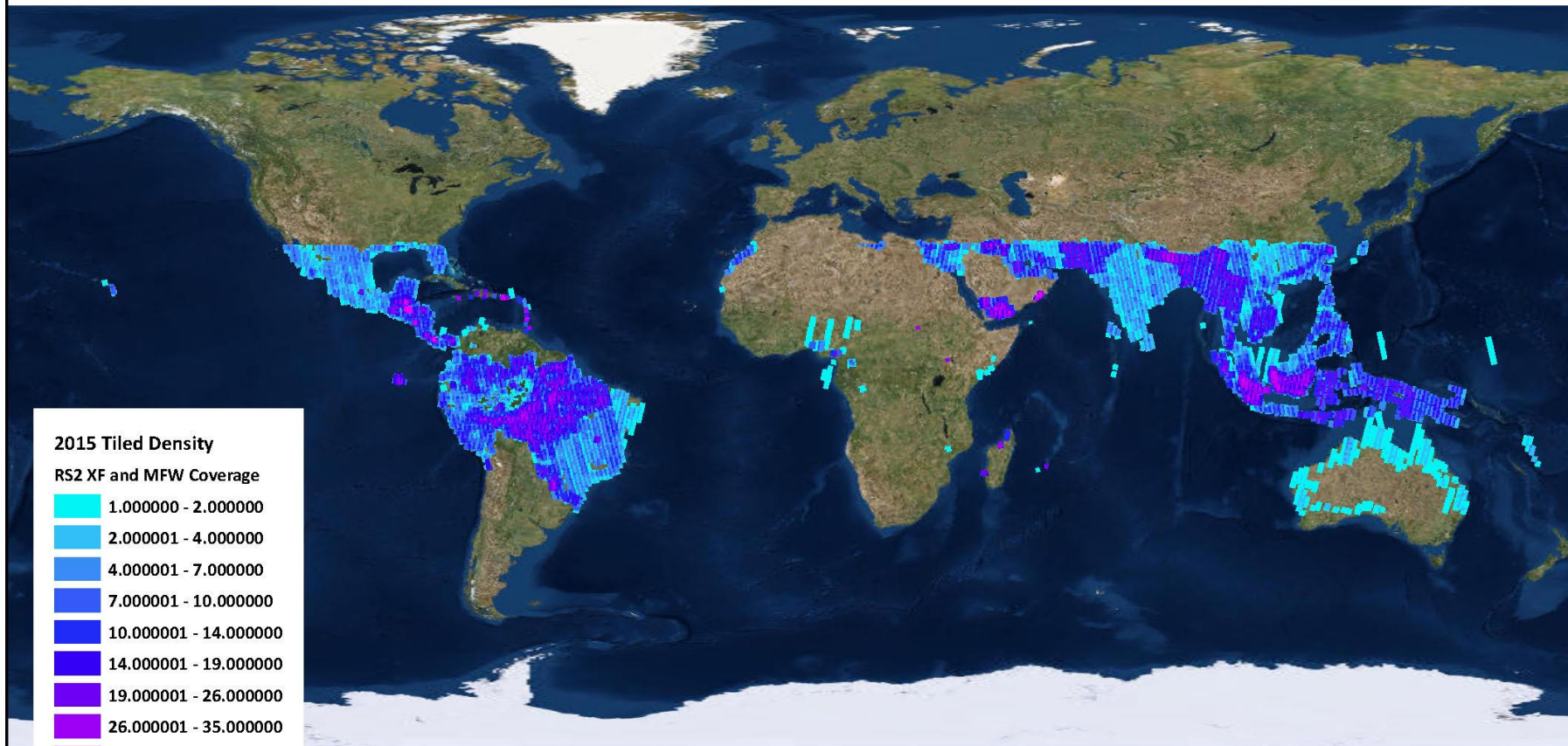
RS2 XF and MFW Coverage



Use, duplication or disclosure of this document or any of the information or images contained herein is subject to the restrictions on the title page of this document. COPYRIGHT ©2016 MDA

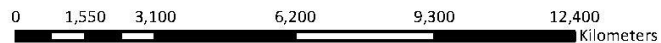
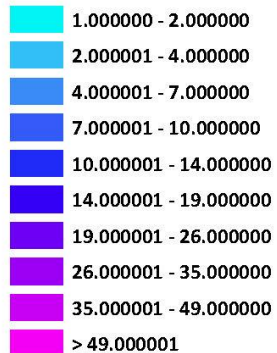
Source: Esri, DigitalGlobe, GeoEye, i-cubed, Earthstar Geographics, CNES/Airbus DS, USDA, USGS, AEX, Getmapping, Aerogrid, IGN, IGP, swisstopo, and the GIS User Community

2015 Tiled Archive Density, 30 degrees North to 30 degrees South



2015 Tiled Density

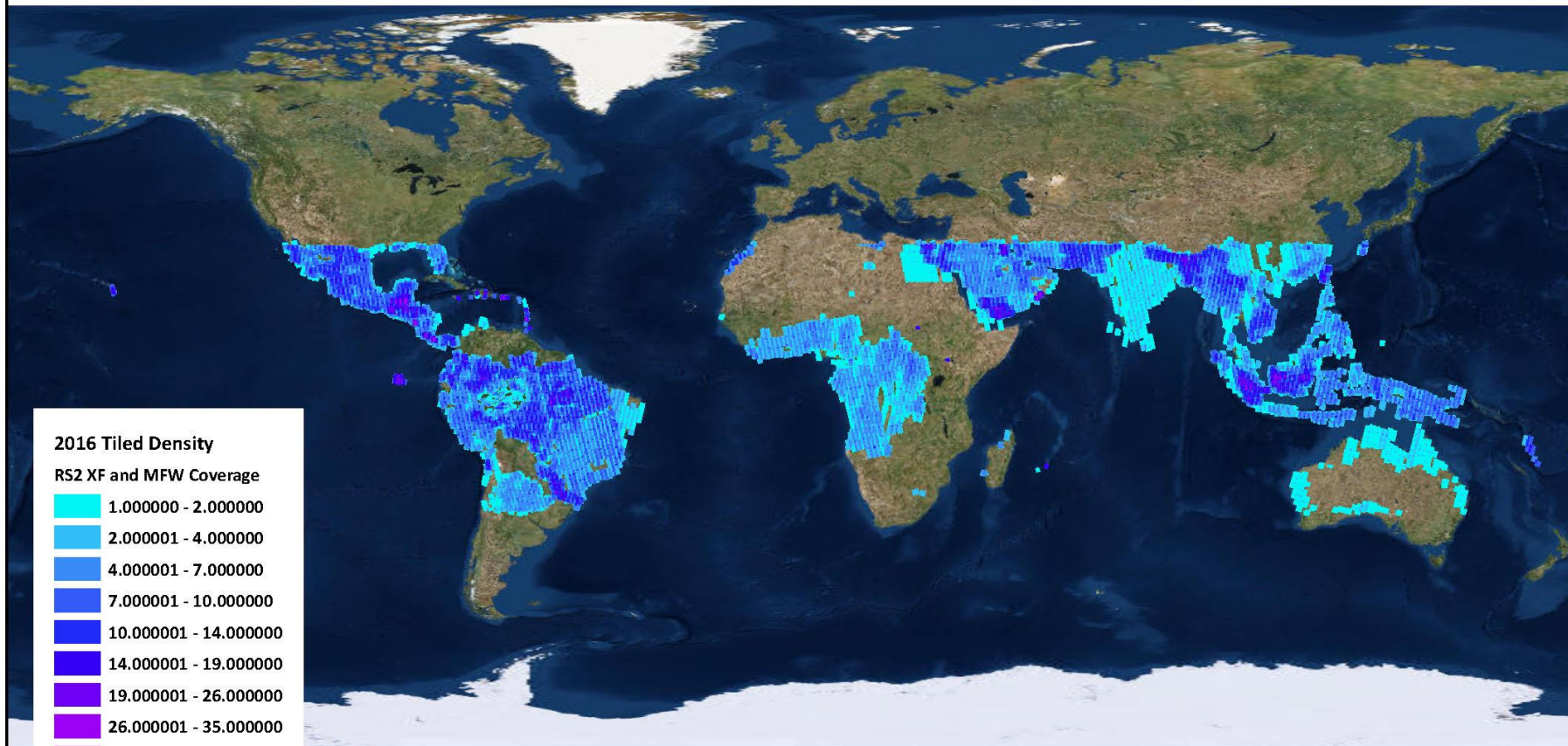
RS2 XF and MFW Coverage



Use, duplication or disclosure of this document or any of the information or images contained herein is subject to the restrictions on the title page of this document. COPYRIGHT ©2016 MDA

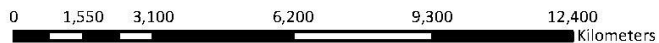
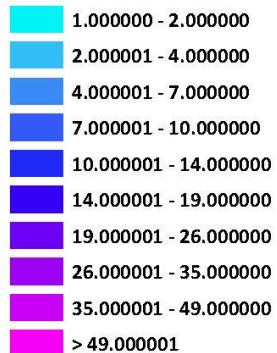
Source: Esri, DigitalGlobe, GeoEye, i-cubed, Earthstar Geographics, CNES/Airbus DS, USDA, USGS, AEX, Getmapping, Aerogrid, IGN, IGP, swisstopo, and the GIS User Community

2016 Tiled Archive Density, 30 degrees North to 30 degrees South



2016 Tiled Density

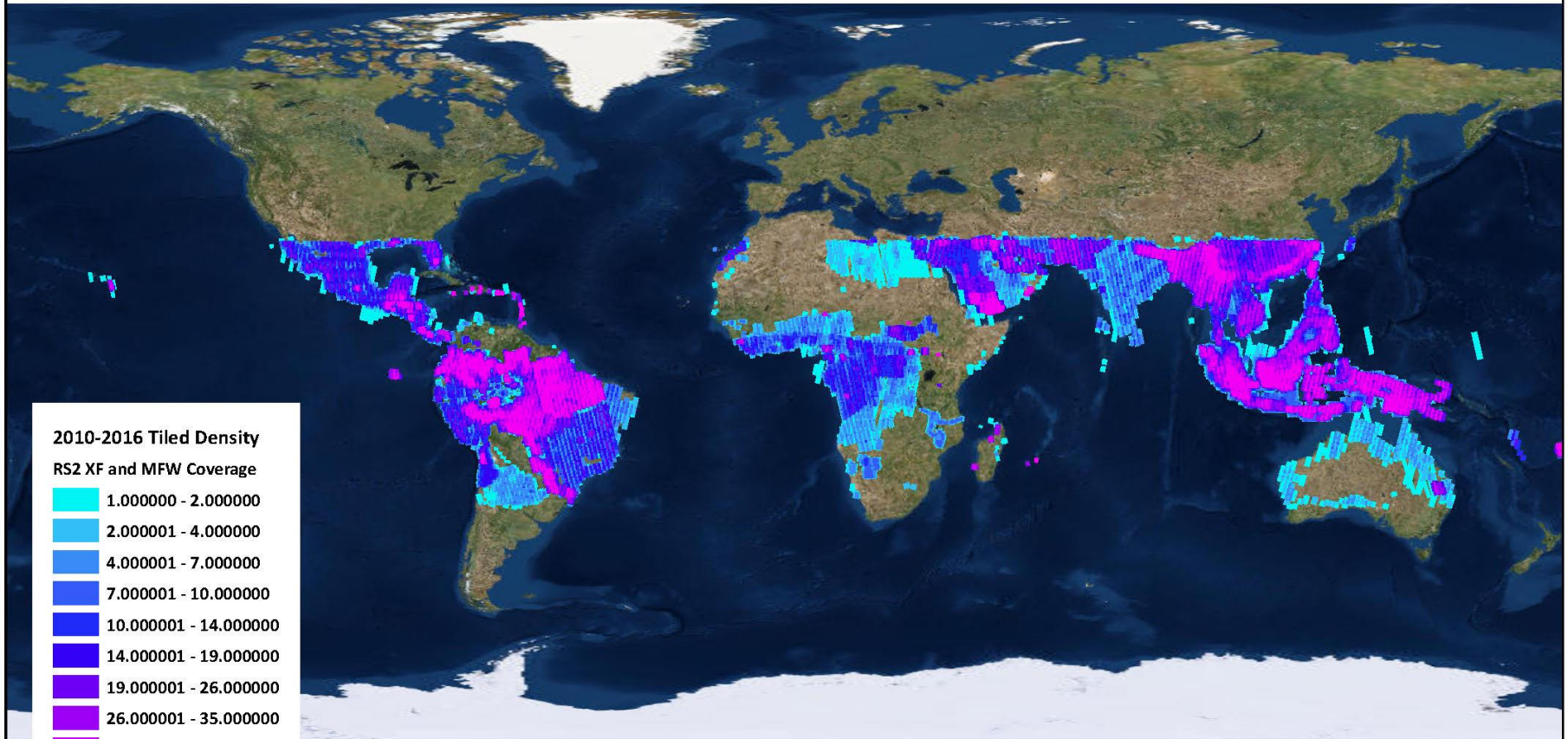
RS2 XF and MFW Coverage



Use, duplication or disclosure of this document or any of the information or images contained herein is subject to the restrictions on the title page of this document. COPYRIGHT ©2016 MDA

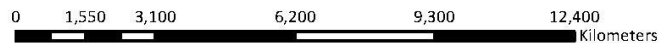
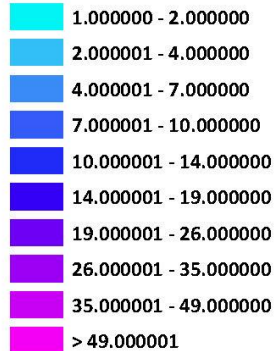
Source: Esri, DigitalGlobe, GeoEye, i-cubed, Earthstar Geographics, CNES/Airbus DS, USDA, USGS, AEX, Getmapping, Aerogrid, IGN, IGP, swisstopo, and the GIS User Community

2010-2016 Tiled Archive Density, 30 degrees North to 30 degrees South



2010-2016 Tiled Density

RS2 XF and MFW Coverage



Use, duplication or disclosure of this document or any of the information or images contained herein is subject to the restrictions on the title page of this document. COPYRIGHT ©2016 MDA

Source: Esri, DigitalGlobe, GeoEye, i-cubed, Earthstar Geographics, CNES/Airbus DS, USDA, USGS, AEX, Getmapping, Aerogrid, IGN, IGP, swisstopo, and the GIS User Community