

FAO – SEPAL

System for Earth Observation Data Access, Processing and Analysis for Land Monitoring

Erik Lindquist

Daniel Wiell

Mino Togna

Yelena Finegold

Andreas Vollrath

Roberto Fontanarosa

Esther Phillips




SEPAL v 2.1


- New look for mosaic including classification and change detection
- Improved RADAR processing
- Integration of Planet and DigitalGlobe
- Time-series analysis

Mosaic / Composite

- Simplified user-interface
- Workflow integrated
- Improved 'best-pixel' selection
- Save 'recipes' for future use / recall

Mosaic / Composite

 MOSAIC

 CLASSIFICATION

 CHANGE DETECTION

Mosaic / Composite

NAME mosaic-2017-09-04-17:00

AREA OF INTEREST Select a country OR DRAW A POLYGON

SENSORS LANDSAT OR SENTINEL-2

TARGET DATE 2017 / 09 / 04

Year: 70, 80, 90, 00, 10, 11, 12, 13, 14, 15, 16, 17

Month: JAN, FEB, MAR, APR, MAY, JUN, JUL, AUG, SEP, OCT, NOV, DEC

Day: 1, 10, 20, 30, 2, 3, 4, 5, 6, 7, 8, 9

SEARCH

✕ mosaic-2017-09-04-17:00

✕ mosaic-2017-09-04-17:00

✕ mosaic-2017-09-04-17:00

SCENES



MOSAIC



AUTO-SELECT



RETRIEVE



PREVIEW



RETRIEVE



RADAR Processing

- Automated generation of Sentinel-1 timeseries/timescan data
- Geometrically terrain corrected product (GTC) or radiometrically terrain-corrected product (RTC) generation
- Time-series gif and kmz files for quality assessment during processing
- Increase in speed of a factor of 3
- Progress monitor for processing
- Kyoto & Carbon FNF global data download
- Docker file allows use of OST on Windows/Mac
- Demos included for capacity building

Integration of Planet and DigitalGlobe

- SEPAL CEO
- Planet quarterly composites
- DigitalGlobe 'best' basemap
- Improved reference data collection
- Improved area estimation

Planet integration for Reference Data



DG integration for Reference Data

Digital Globe

Export

Prev Next List

32

Charts

class

Select a value

Low High

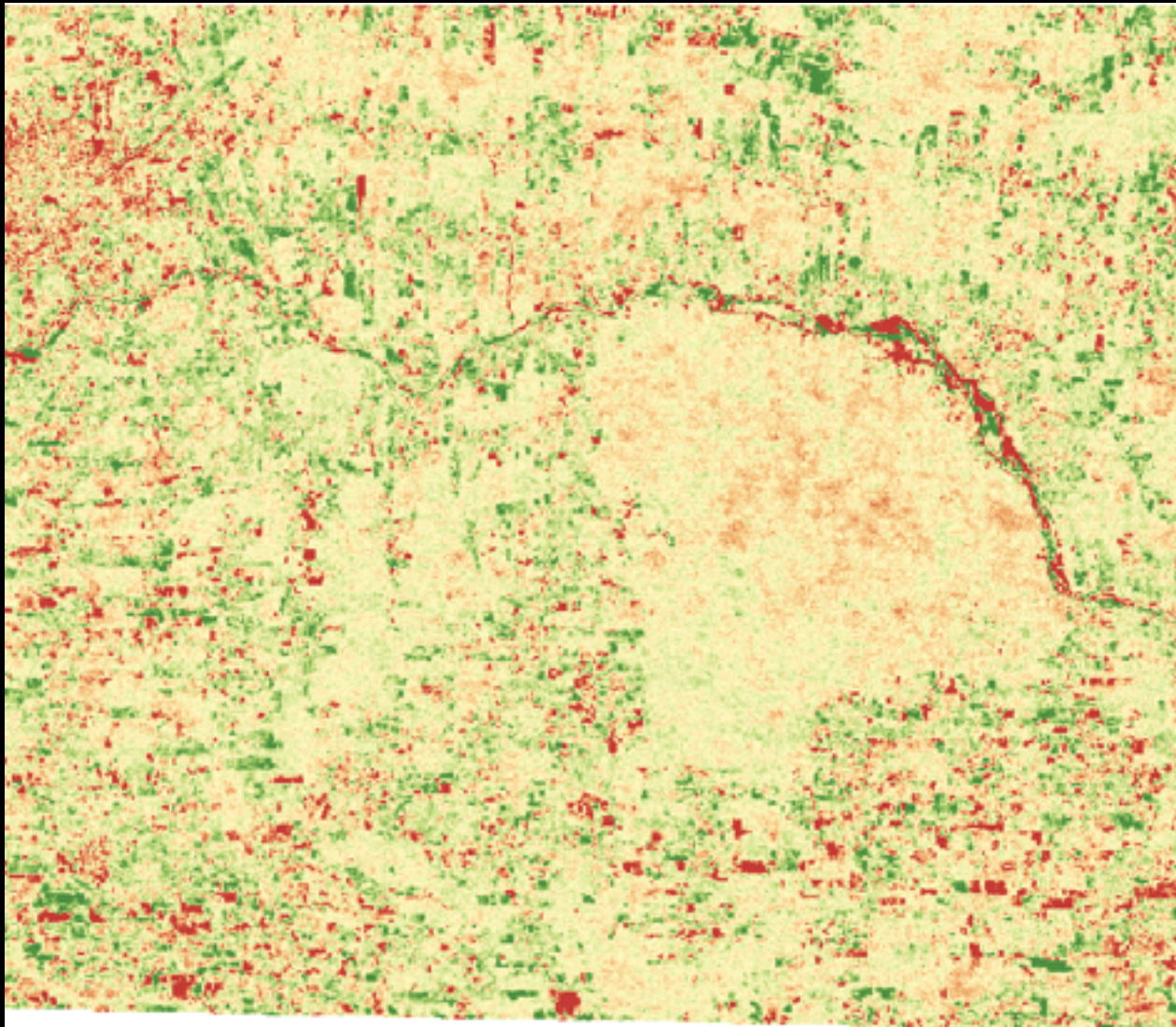
Google

Map data ©2017 Google Terms of Use Report a map error

Time-series Analysis

- Close to implementing TS module
- BFAST and BfastSpatial
- Increased speed and larger areas analyzed

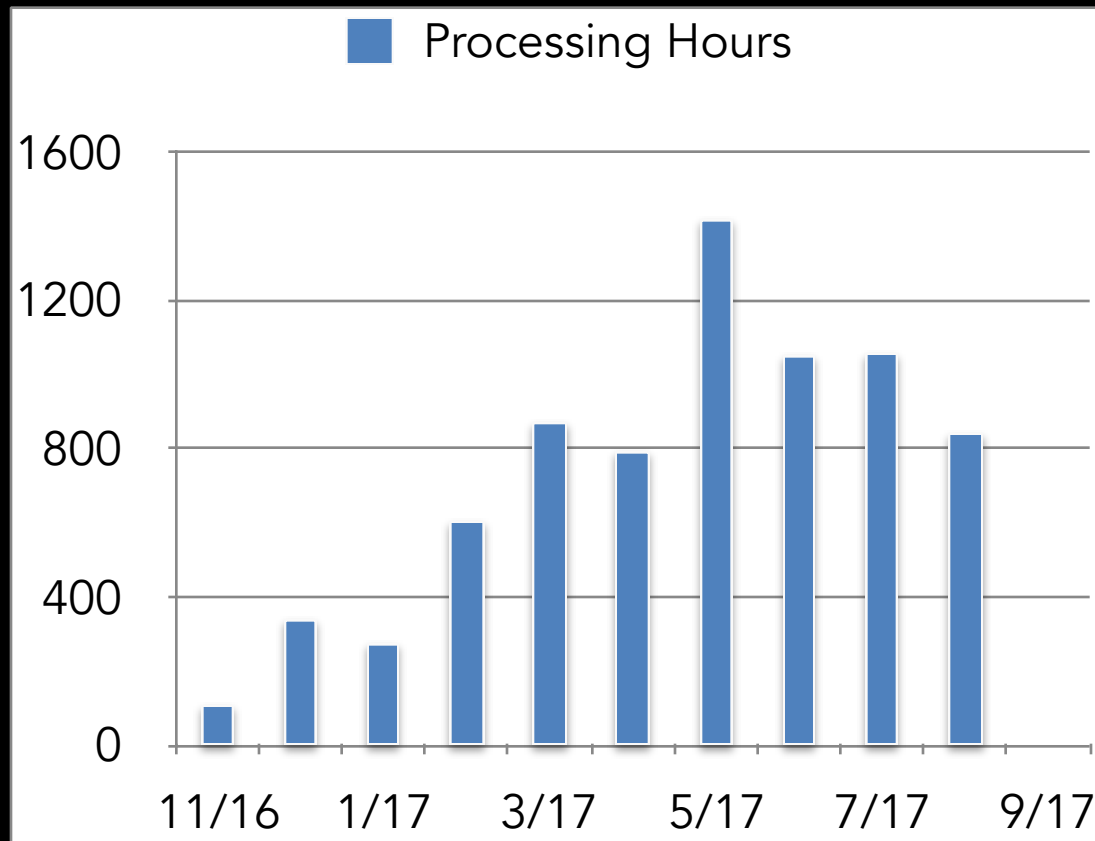
Time-series Analysis



SEPAL User Statistics

- Increased user numbers
- Increased data processing
- Increased data storage
- 442 Active Users
- 2 TB of data in 'active' storage

SEPAL User Statistics



Next Steps

- Collaboration with Forestry TEP
- Integration of datacube
- Streamlined user experience



SEPAL - 2.0