



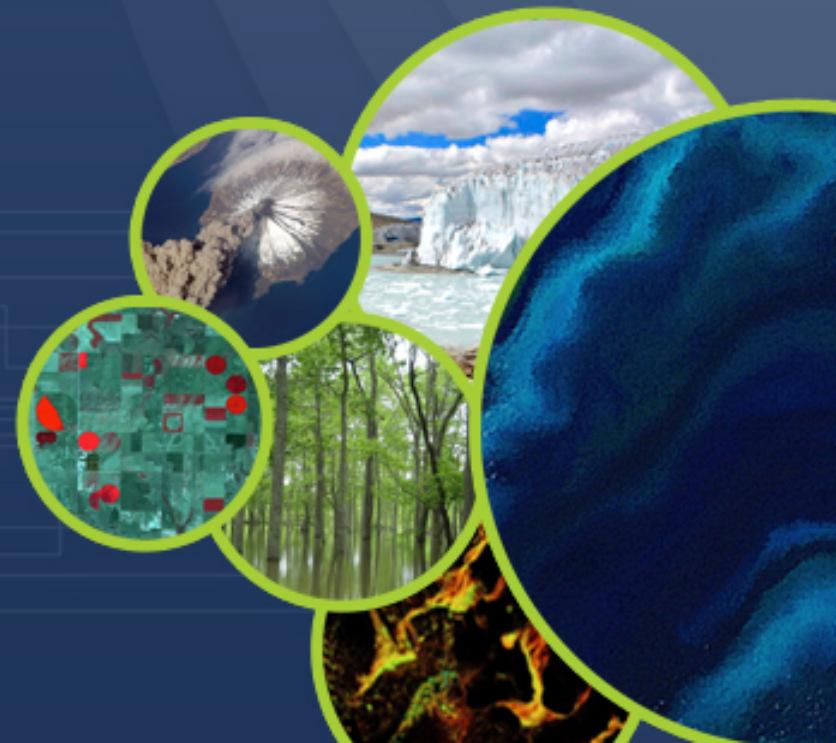
Committee on Earth Observation Satellites

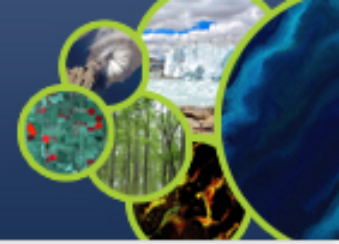
Welcome to Nakano

CEOS AC-VC

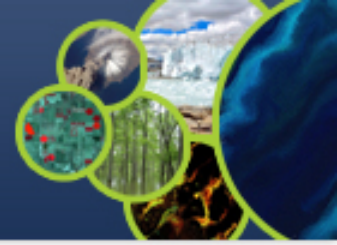
Nakano, Tokyo

June, 2019





since 1695



Tokugawa Tsunayoshi



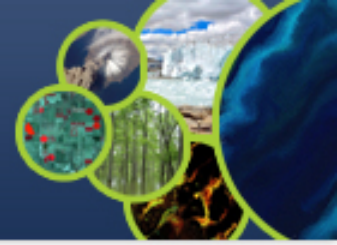
Special cage



Before



After

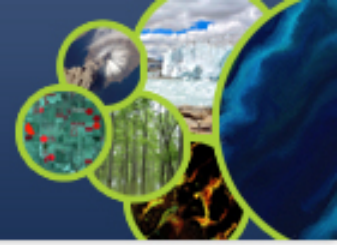


1940-1945
Army School



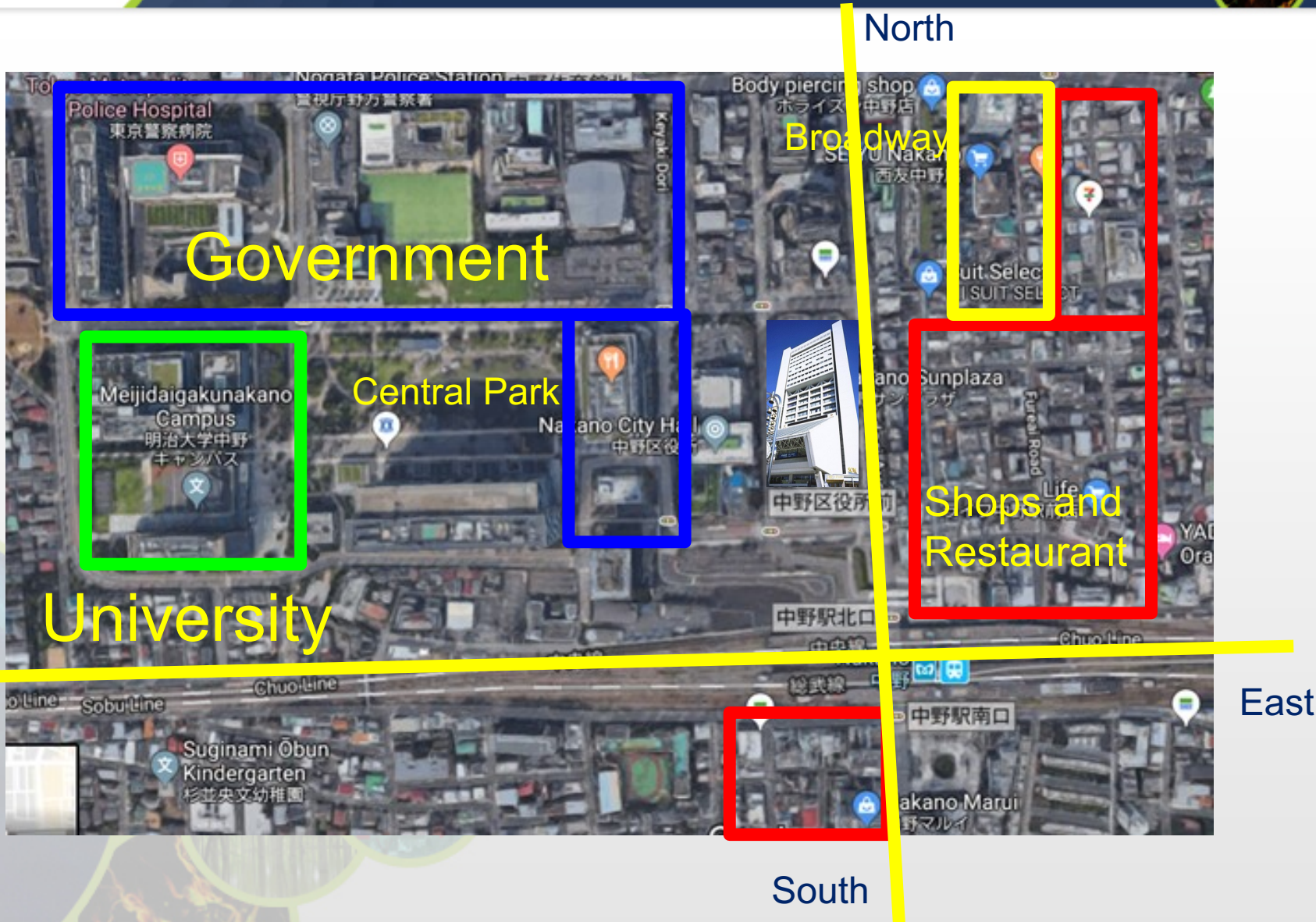
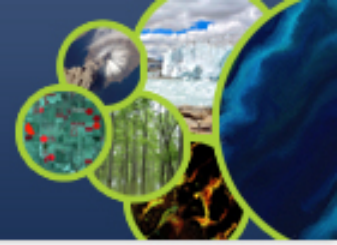
1949-2001
National Police
Academy

Now Nakano Town



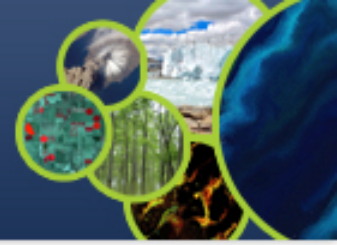
Nakano Central park, three universities, Kirin Brewery HQ





Meeting dinner

June 11 (Tue) from 19:00-21:00



“Sennen-no-utage”

(the millennium banquet)

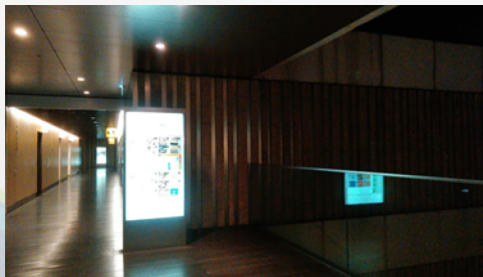
\ 5,000 (50-80 of AC-VC party)

Including tax and drink

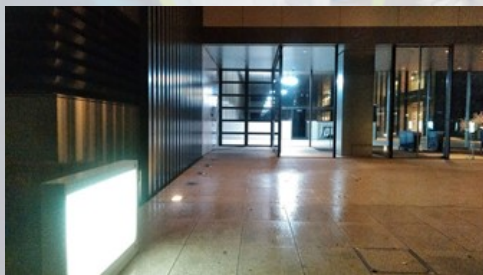
Located at 2nd floor of the Kirin Brewery

HQ building

Tel. 03-3228-8688



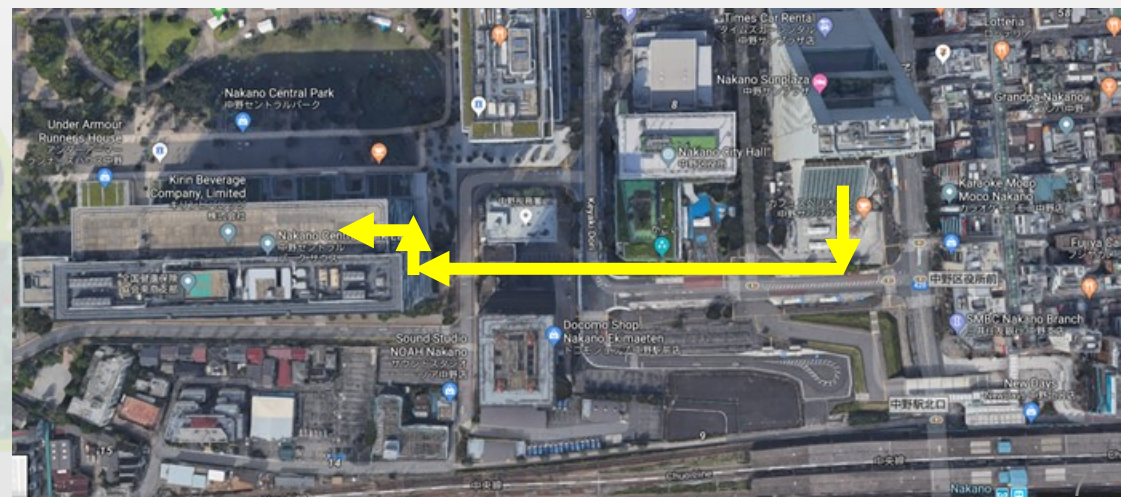
2nd floor

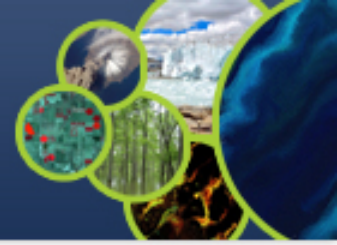


Kirin HQ building

<http://www.nakano-centralpark.jp/food/s22> (Japanese)

http://www.roza.monterozaco.jp/monte_view/View_shop.php?SP_CD=832286#





A. Pasta Kitchen
Japanese-Italian Pasta
Lunch ¥1000-1300
Dinner ¥2:000



B. Marugame Seimen
Udon Noodle (Quick)
Lunch ¥700-¥900



C. Suntory Pub Brick
Bar ¥3,000



D. Okazyoki Sea Food Grill
Lunch ¥900
Dinner ¥5000

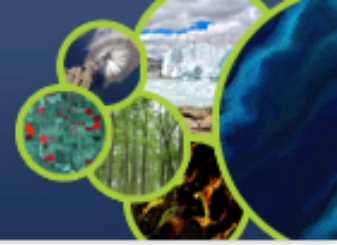


E. Daini Chikara Shuzo
Fresh Seafood
Dinner ¥7,000

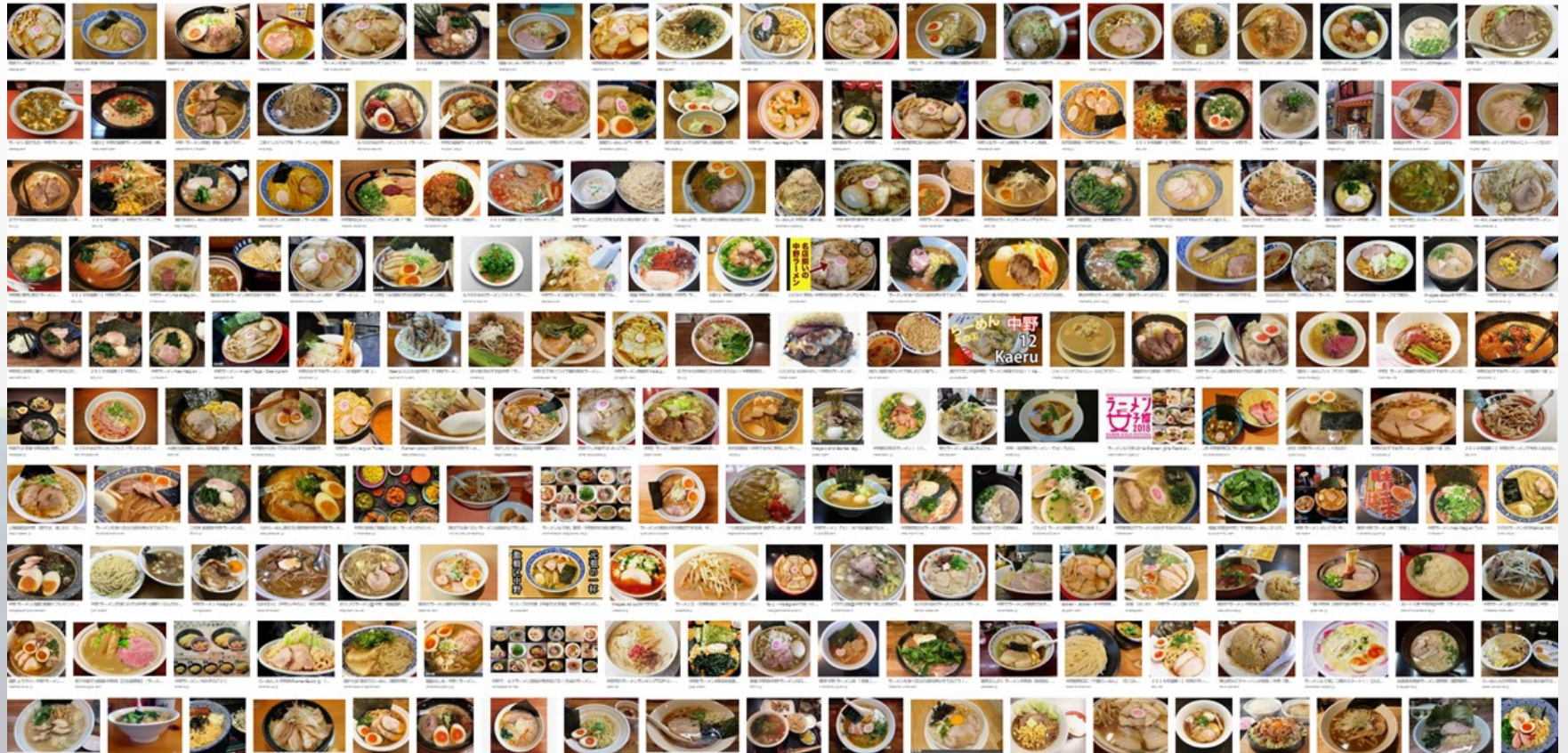


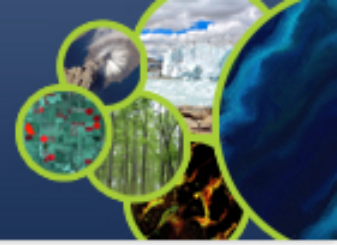
F. Awa
Bar ¥2,000





More than 100 Ramen Restaurants within a 10-minuts walk





1 hour : Nakano Broad Way (5 min walk)

<http://www.nbw.jp/#!/en>



1.5 hour: Arai Yakushi Temple (15 min walk)

<http://www.araiyakushi.or.jp/en>



2 hour: Temple of Philosophy Park (20 min walk)

https://en.wikipedia.org/wiki/Tetsugaku-d%C5%8D_Park



3 hour, Meiji-shrine, 10 min train ride (JR yellow line)

<http://www.meijijingu.or.jp/english/index.html>



Half day: Takao san from Nakano (1 hour) for hiking

<https://www.keio.co.jp/english/sightseeing/takao.html>



One day: Hakone from Shinjyuku station (2.5 hours)

<https://www.hakonenavi.jp/international/en/>