



Committee on Earth Observation Satellites

# ISRO Initiatives in data democracy for capacity building

Session 8: Expanding our work on Data Democracy  
Indian Space Research Organization  
Dr. Prakash Chauhan, Director, IIRS (ISRO)

CEOS WGCapD-9 Annual Meeting  
Sunnyvale, California  
10-12 March 2020





## Natural Resources Inventory & Disaster Management

**RESOURCESAT- 2 & 2A**

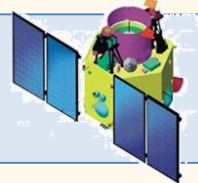


- Three tier imaging : 56 m / 23 m / 5.8 m
- Revisit Capability : 03 / 11 / 03 days



## Large Scale Mapping, Infrastru. Planning & Cartography

**CARTOSAT-1, CARTOSAT-2 (3) & 2S (4)  
CARTOSAT-3**

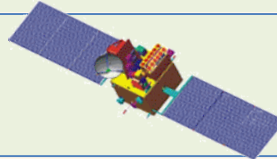


- 2.5 m Stereo imaging
- Sub-meter PAN (0.25 cm)
- 1.5 m Multi-spectral

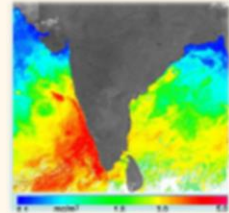


## Oceanography

**OCEANSAT-2 ; SARAL ; SCATSAT-1**

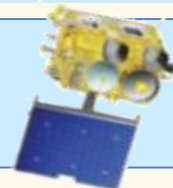


- Ocean color 360 m with 2 days revisit
- PFZ, Ocean State Forecast
- Ocean Altimetry, Surface Wind Vector

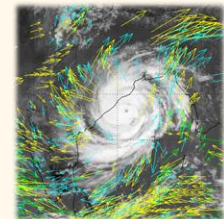


## Weather & Climate

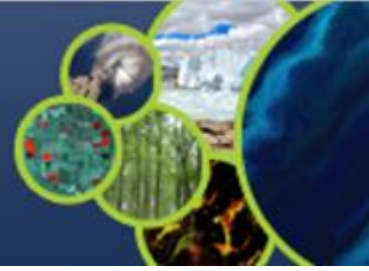
**INSAT 3D & 3DR ; MEGHA-TROPIQUES**



- 6 channel Imager – 48 images per day
- 19 Channel Sounder – Atm. Profiles
- Radio Occultation – humidity profiles



# Bhuvan : The Platform with Diverse Application Potential



Visualization (>22 TB)  
and Free Download  
(>110 GB)

Maps & OGC Services  
(~7000+)

Applications  
(200+)

State Portals (30)

Crowd Sourcing (20 M)

1

Visualization Platform



2

Platform for Building User Applications



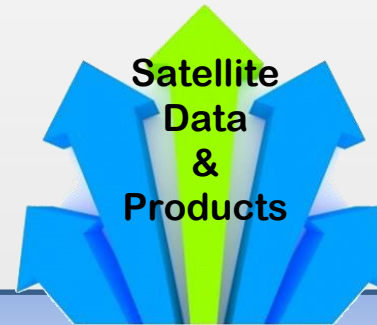
3

Platform for Building Mobile Applications



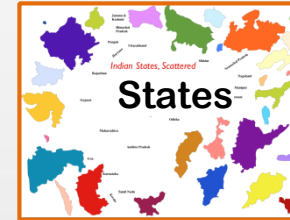
4

Platform for For Free Data Clearing House



5

Platform for States To Share data



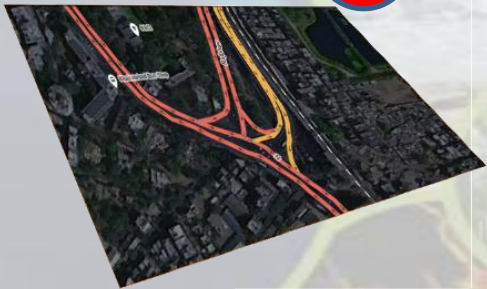
6

Applications For States



7

Platform for Mapping



8

Platform for Disaster Support



<https://bhuvan.nrsc.gov.in>

Registered users : > 1.5 lakhs  
Download: > 1 TB per month

## Indian Store-house for Meteorological and Oceanographic Data

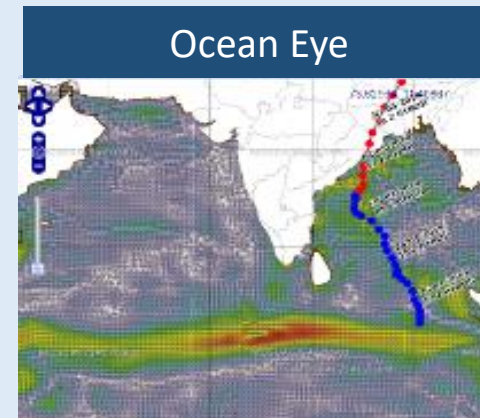
- 8 Indian Satellite, 194 Products and 23 applications (INSAT-3D/3DR, SCATSAT-1, Megha-Tropiques, SARAL, Kalpana-1, INSAT-3A, Oceansat-2)
- GISAT, Oceansat-3 and INSAT-3S planned
- Total of **13 million** products disseminated to **139 countries**
- Weather and Ocean State Forecast

## Major Applications

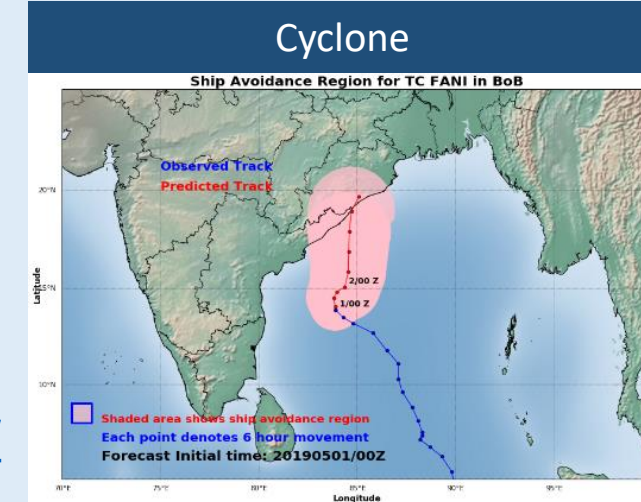
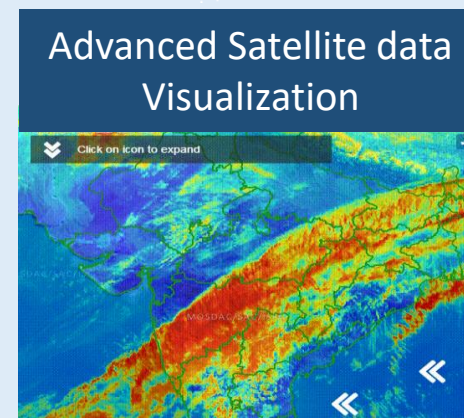
- Automated Ocean Forecast to ships (**Ocean-Eye**)
- Cyclone Track and Intensity forecasting (**SCORPIO**)
- Nowcasting of Heavy rain and Cloud burst (**Netra**)
- Rip current forecast for 175 beaches
- Heat/Cold wave alerts

## Data Analytics and Visualization

- An Integrated data visualization system for Earth Observation, In-situ data & Forecast Information ( <https://mosdac.gov.in/live> )



<https://mosdac.gov.in/sci/>



<https://mosdac.gov.in/scorpio>

## Rip Current Forecast



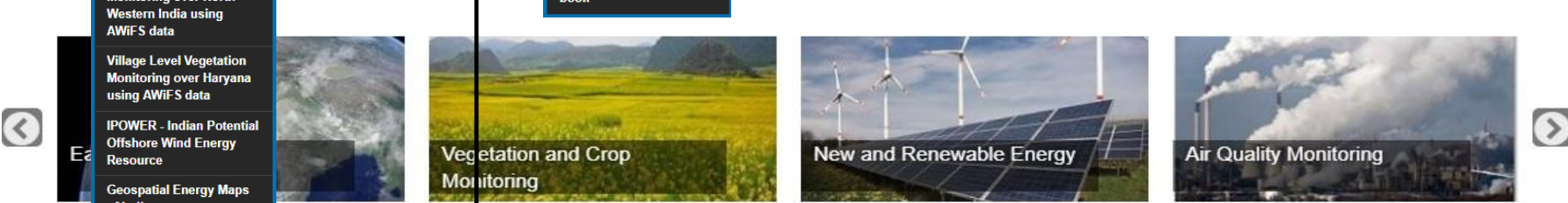
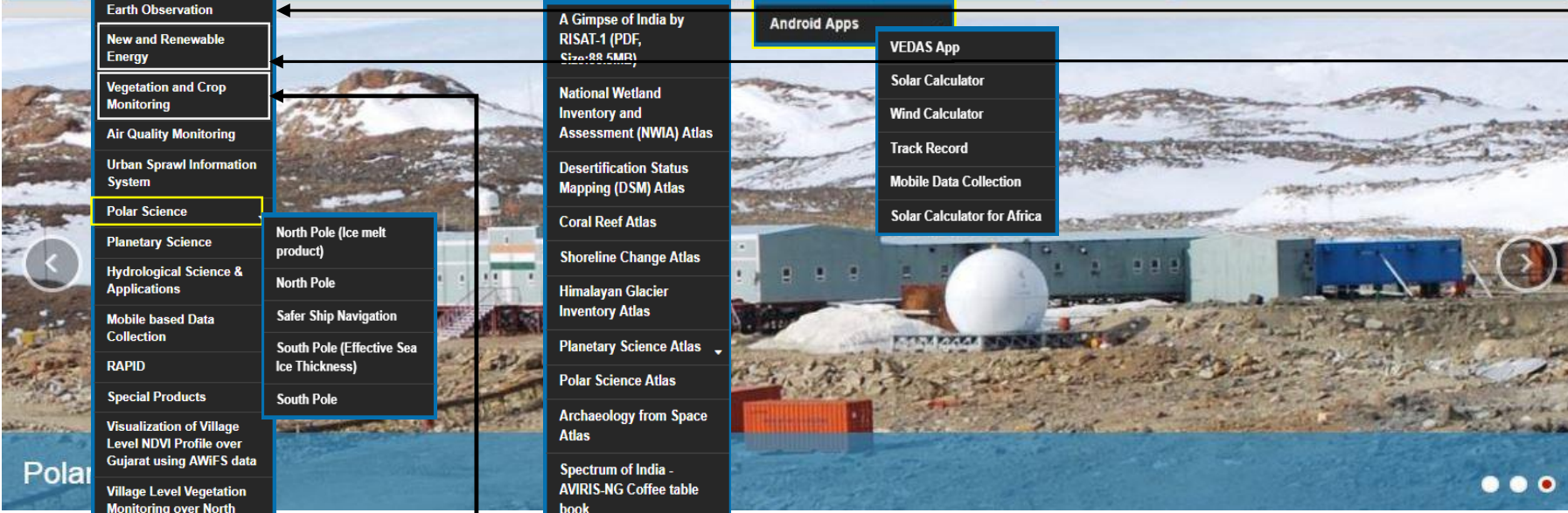
[https://mosdac.gov.in/rip\\_current\\_forecast](https://mosdac.gov.in/rip_current_forecast)

- Earth Observation
- New and Renewable Energy
- Vegetation and Crop Monitoring
- Air Quality Monitoring
- Urban Sprawl Information System
- Polar Science
- Planetary Science
- Hydrological Science & Applications
- Mobile based Data Collection
- RAPID
- Special Products
- Visualization of Village Level NDVI Profile over Gujarat using AWiFS data
- Village Level Vegetation Monitoring over North Western India using AWiFS data
- Village Level Vegetation Monitoring over Haryana using AWiFS data
- IPOWER - Indian Potential Offshore Wind Energy Resource
- Geospatial Energy Maps of India
- Snow cover monitoring

- North Pole (Ice melt product)
- North Pole
- Safer Ship Navigation
- South Pole (Effective Sea Ice Thickness)
- South Pole

- A Gimpse of India by RISAT-1 (PDF, Size: 88.5MB)
- National Wetland Inventory and Assessment (NWIA) Atlas
- Desertification Status Mapping (DSM) Atlas
- Coral Reef Atlas
- Shoreline Change Atlas
- Himalayan Glacier Inventory Atlas
- Planetary Science Atlas
- Polar Science Atlas
- Archaeology from Space Atlas
- Spectrum of India - AVIRIS-NG Coffee table book

- Android Apps
- VEDAS App
  - Solar Calculator
  - Wind Calculator
  - Track Record
  - Mobile Data Collection
  - Solar Calculator for Africa



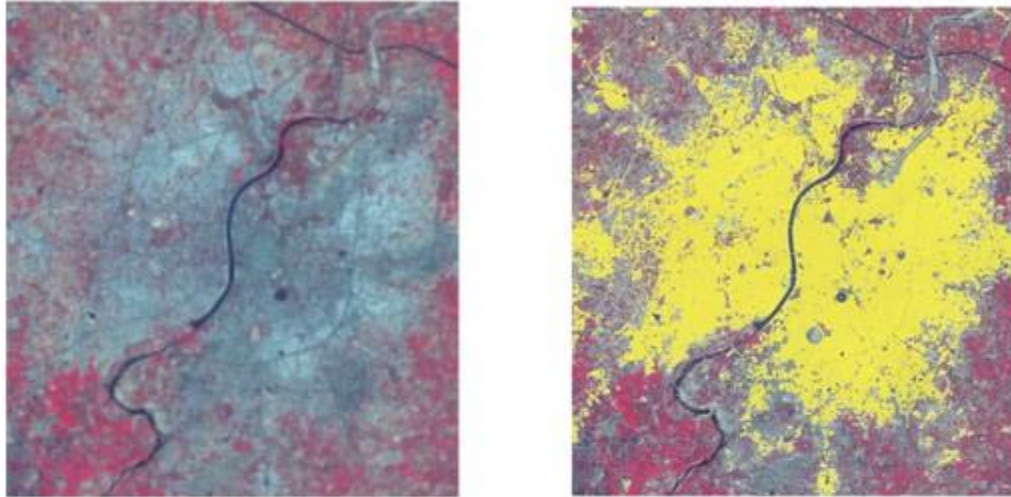
Earth Observation
Desertification (2 cycles)
Wetland
Coastal Environment
Coral Reef
Shoreline Change (2 cycles)
Snow & Glacier
Wasteland; Alpine Treeline (2 cycles)

New and Renewable Energy	
Solar Insolation	January 2009 to October 2019
Wind Power	March 2000-2014
Forecast	Insolation; Temperature; Dust; RH (in Air Quality Monit)

Vegetation and Crop Monitoring	Theme:	
	Vegetation Indices (NDVI)	
	Vegetation Indices (NDWI)	
	Soli Moisture	
	Rainfall	
	Temperature	
	Surface Dryness Index	
	SAR Backscatter	
	Crop cutting experiment	
	Data Analysis:	
	NDVI Difference	
	NDWI Difference	
	Temporal RGB	
	Temporal NDVI max	
	Range Analysis	
Cumulative Analysis		
Temporal Analysis		
NDVI PCA		
NDVI VCI		
Long-term Statistics		

# Artificial Intelligence (AI) and Big Data Analysis (BDA) on VEDAS platform

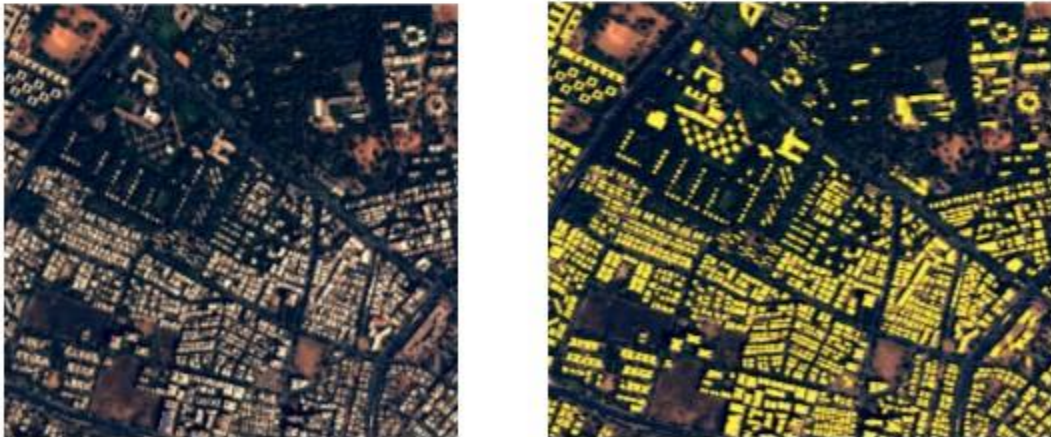
## Urban area extraction using IRS LISS-IV data



Input

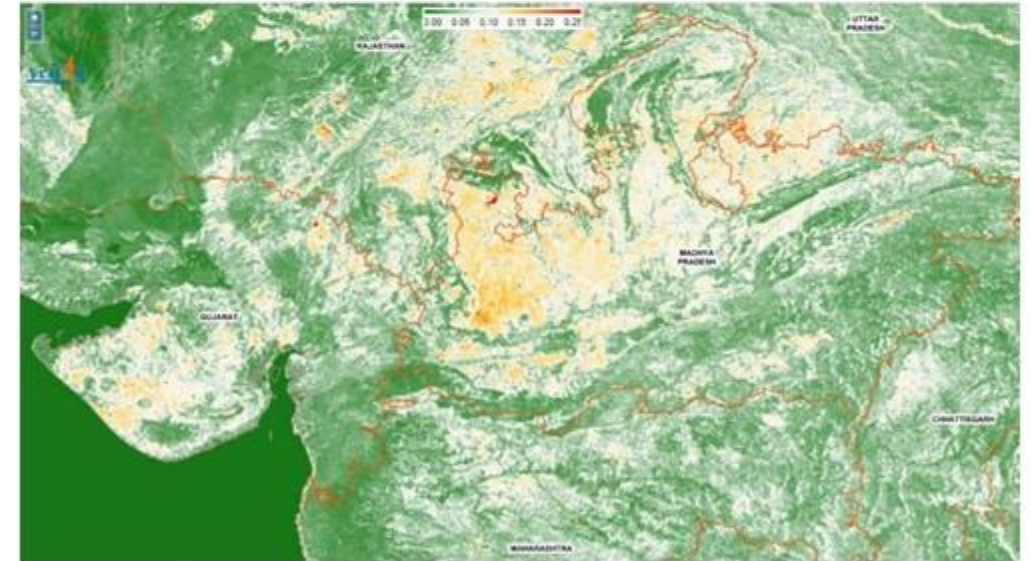
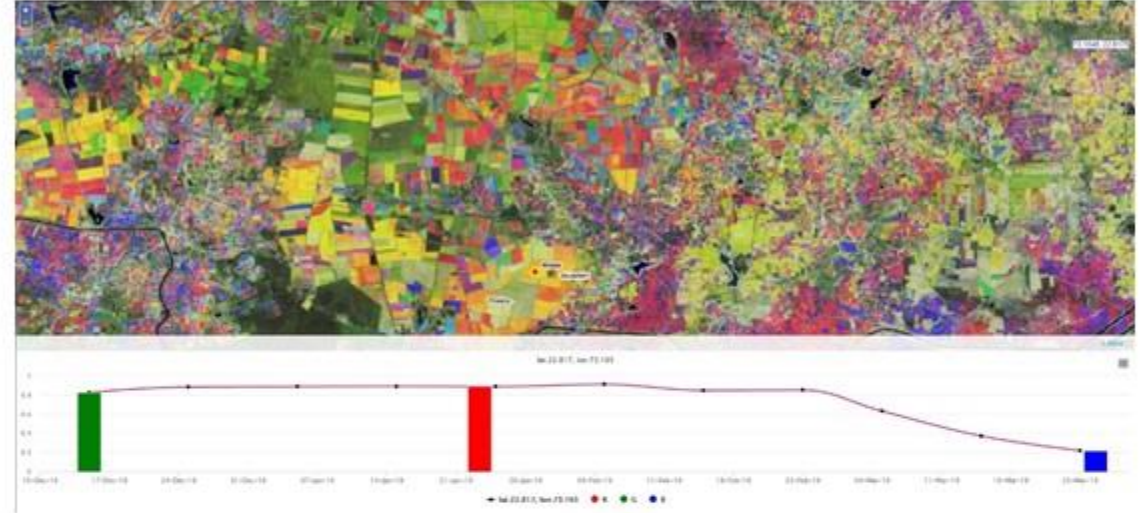


Output



## Building Footprint Extraction using Cartosat data

## Multi-temporal data visualisation and Classification on Web



## Multi-temporal data analysis on Web (Std. Dev of February NDVI for 2001-2019)





# AIR QUALITY MONITORING & FORECAST SYSTEM

(<https://airquality.iirs.gov.in/>)



## OVERLAY LAYERS

## BASE MAPS

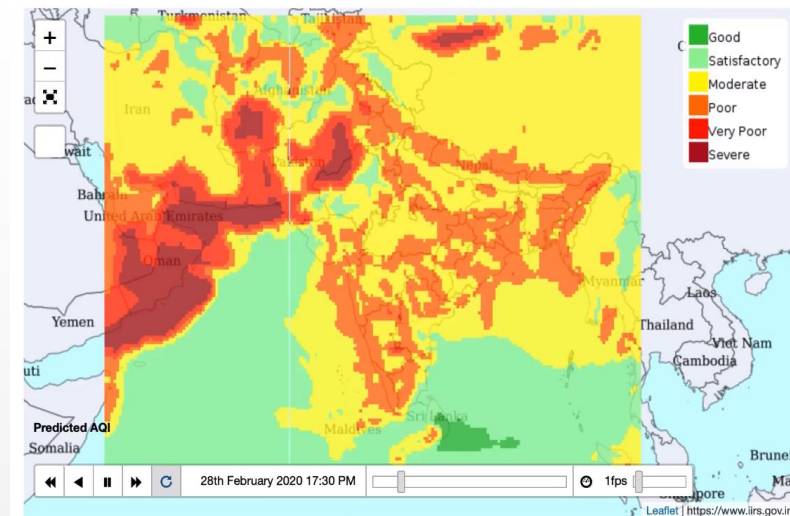
List of Layers

- DUST (Current forecast for 48 hrs)
  - PM10, PM2.5 and Dust load
- Pollutant Gases (Current forecast for 48 hrs)
  - O3, CO, NO2, and SO2
- Satellite Based Estimation (Last five observations)
  - AOD, PM2.5, and PM10
- Active fire data from FIRMS
- Wind forecast NCEP-GFS and using Windy API
- Air quality index (48 hrs forecast)
- Vector Layers (India State, District & Taluk and Continents)

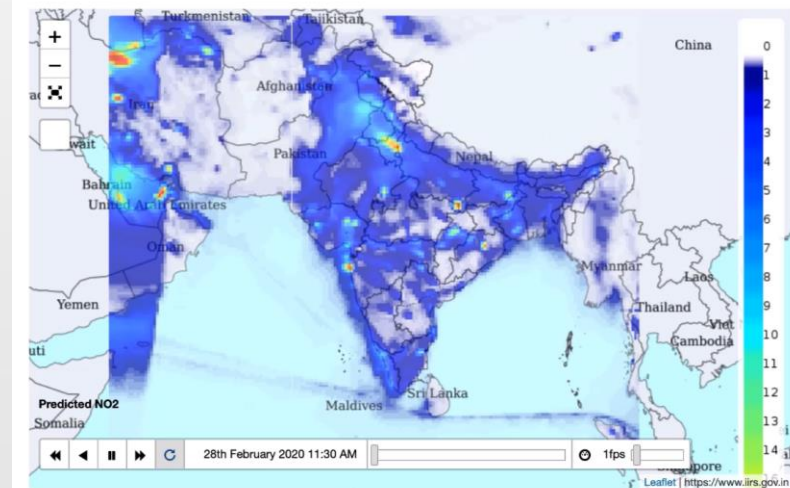
- OCM True Colour (Source: IIRS)
- Bhuvan Map (Source: Bhuvan)
- NASA Blue Marble (Source: NASA EOSDIS GIBS)
- Aerosol Optical Depth (Source: RAPID-IMD)
- MODIS Aqua Corrected Reflectance TrueColor (Source: NASA EOSDIS GIBS)
- Aerosol Optical Depth - Terra/Aqua MODIS (Source: NASA EOSDIS GIBS)

Dust Forecast	<ul style="list-style-type: none"> <li>• 2 days forecast for dust burden and dust based particulate matter (PM 10 and PM 2.5) generated using numerical prediction model WRF fully coupled with Chemistry (WRF-Chem).</li> <li>• Generated for every 6 hour interval at 25 km resolution.</li> </ul>	Data Used
Pollutant Gases	<ul style="list-style-type: none"> <li>• WRF-Chem model is being used to simulate 2 days forecast of 4 gaseous air pollutants O3, CO, NO<sub>2</sub>, and SO<sub>2</sub>.</li> <li>• Generated for every 6 hour interval at 25 km resolution.</li> </ul>	
Satellite Based Estimation	<ul style="list-style-type: none"> <li>• Satellite based estimation of surface level Aerosol Particulate Matter (PM2.5 and PM10) at 12.5 km resolution .</li> <li>• Geographically Weighted Regression (GWR) is used to estimate regional PM2.5 &amp; PM10 by combination of INSAT-3D derived AOD, dispersion, source apportionment, meteorology and ground based measurements.</li> </ul>	

## ☰ Predicted AQI



## ☰ Predicted NO2







## International Charter



• Data support extended to 17 countries / 21 Disaster Events

# Sentinel Asia – 2019



- Data support extended to **11** countries / 19 Disaster Events



FLOODS
LANDSLIDES
EARTHQUAKES
FOREST FIRES
MULTIPLE DISASTERS

# Bhoonidhi

ISRO Open Data Access web application facilitates the dissemination of free satellite data products to online users on web.

The screenshot shows the Bhoonidhi web application interface. The top navigation bar includes the ISRO logo, the text 'Bhoonidhi Beta ISRO's Open Data Access', and the 'nrsc' logo. Below the navigation bar, there are search filters for Satellite (LandSat-8), Sensor (OLI+TIRS), Start Date (1 January 2019), and End Date (24 February 2020). A 'Submit' button is located below the filters. To the right of the filters is a map of India with a grid overlay, and a 'Frequency' legend with color-coded boxes. Below the filters is a 'Satellite Data Availability' table.

Satellite	Sensors
LANDSAT-8	OLI+TIRS - Georeferenced Terrain Corrected Products
SENTINEL-1A & 1B	Interferometric Wide Swath (IW) - VV+VH pol, L1-GRD
SENTINEL-2A & 2B	MSI - Level 1C
OCEANSAT-2	OCM - GAC - Georeferenced Terrain Corrected Products

## Data in Bhoonidhi :

- ▶ Oceansat-2
- ▶ Landsat-8
- ▶ Novasar-1
- ▶ GISAT-1
- ▶ Sentinel 2A, 2B
- ▶ Sentinel 1A, 1B

Data search based on

- Satellite
- Resolution
- Event
- Time series

**Thank You**

CART option to Add/Delete/Confirm the items in a CART which is day wise.