



The first CEOS-sponsored SRTM DEM modeling workshop at RCMRD, Nairobi, May 2013

A Collaborative Effort

CEOS, GEO, and a group of US agencies have lobbied for release of SRTM 30 m data for several years.

Many of the same agencies were involved in the first CEOS DEM modeling workshop at RCMRD in Nairobi, Kenya in May, 2013. At the time, only a pilot release of select countries was provided.

In conjunction with the 2014 UN Climate Summit, the White House formally announced the release of the dataset globally. This enables CEOS to work with its many partners and build on its experience to host additional SRTM DEM workshops to apply these data to address important issues such as flood and volcanic lahar flow prediction.

“The datasets being released will be used worldwide to improve environmental monitoring, climate change research including sea-level rise impact assessments, and local decision support.”

-- White House statement, Sept. 23, 2014

Some of our workshop partners:



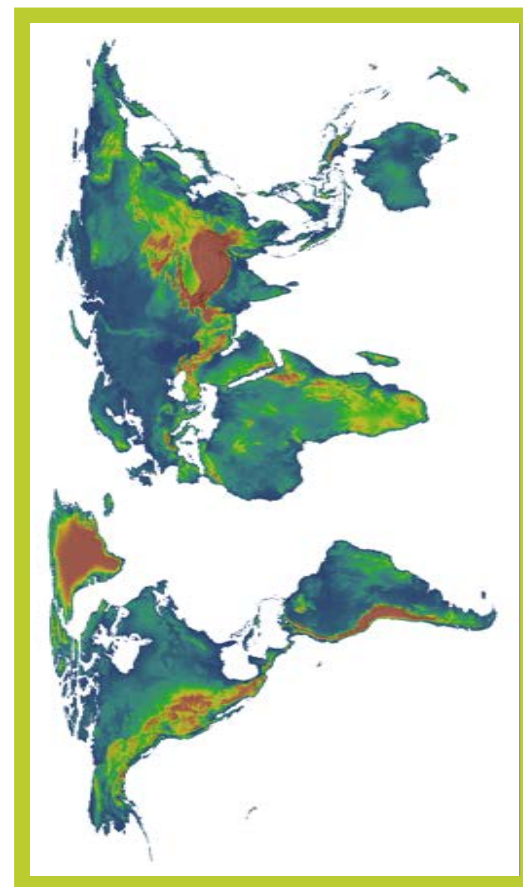
Please check the CEOS WGCapD website for the latest workshop plans: Go to <http://www.ceos.org>; under “Working Groups,” click “Capacity Building & Data Dem.”

For further information, please contact a workshop host, or Pat O’Brien (NOAA) at: patrick.obrien@noaa.gov +1-301-713-7059

Shuttle Radar Topography Mission (SRTM) 30 Meter Data Availability



Committee on Earth Observation Satellites



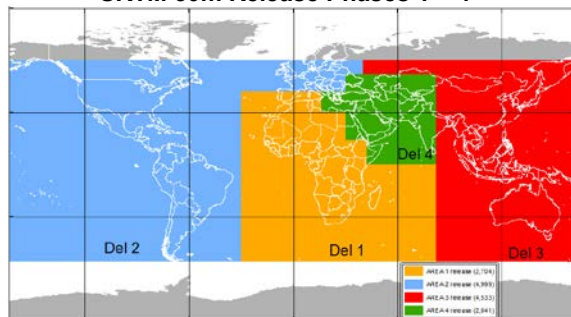
What is Shuttle Radar Topography Mission (SRTM)?

- An 11-day mission to map most of the world in February 2000 on NASA's Space Shuttle Endeavor
- Collaboration with the US National Geospatial-Intelligence Agency
- Produced high quality digital elevation model (DEM)
- 90m data has been available free worldwide
- **The US Government is in the process of publicly releasing the 30m data worldwide**
- Among its many uses, the higher resolution data enables more accurate modeling of floods, coastal storm surges, mudslides, etc.

Where and when will it be available?

- Online at: <http://earthexplorer.usgs.gov> or <https://lpdaac.usgs.gov>
- Statement on two datasets here.
- In four phases from September, 2014 to August, 2015

SRTM 30m Release Phases 1 – 4

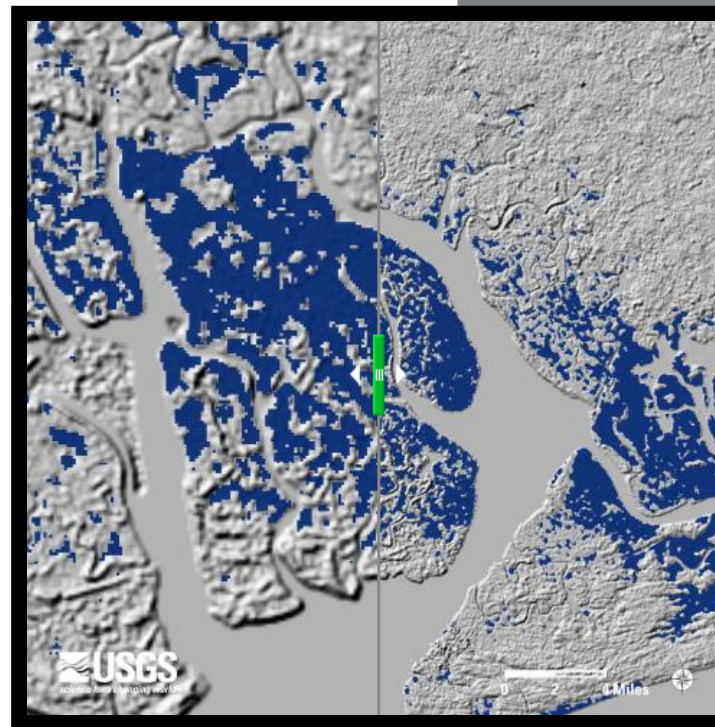


Sep 2014: Africa, far SW Europe

Nov 2014: Latin America, the Caribbean, S Pacific Isles, N America, Europe

May 2015: SE Asia, Australia, W Pacific Isles, China, Mongolia, Russia

Aug 2015: Middle East, rest of Africa and Asia



A screenshot of SRTM elevation data in Niger River Delta, Nigeria. Left, 90-meter resolution; right, enhanced 30-meter resolution.

Courtesy: USGS

Workshops

One of the many efforts being planned by US agencies, in coordination with the Committee on Earth Observation Satellites (CEOS) and the Group on Earth Observation (GEO), are a series of workshops to raise expertise in SRTM 30m utilization in developing countries.

- Regionally focused, hosted by respected institutions with expertise in digital elevation models
- Co-organized by the host agency and CEOS' Working Group on Capacity Building and Data Democracy (WGCapD)
- Additional trainers from partnering CEOS agencies
- Participants will be prospective users from relevant government ministries (e.g., environment, agriculture, disaster management)
- "Train-the-trainer" model; participants should plan to share their skills with other practitioners in their home countries

Where and when will these workshops be held?

Mar 23-27, 2015
South African National Space Agency (SANSA)
Pretoria, South Africa

May 25-29, 2015
Regional Centre for Space Science and Technology Education for Latin America and the Caribbean (CRECTEALC)
Puebla, Mexico

Fall, 2015
International Centre for Integrated Mountain Development (ICIMOD) and SERVIR
Kathmandu, Nepal

To be determined, 2016
TBD
West Africa