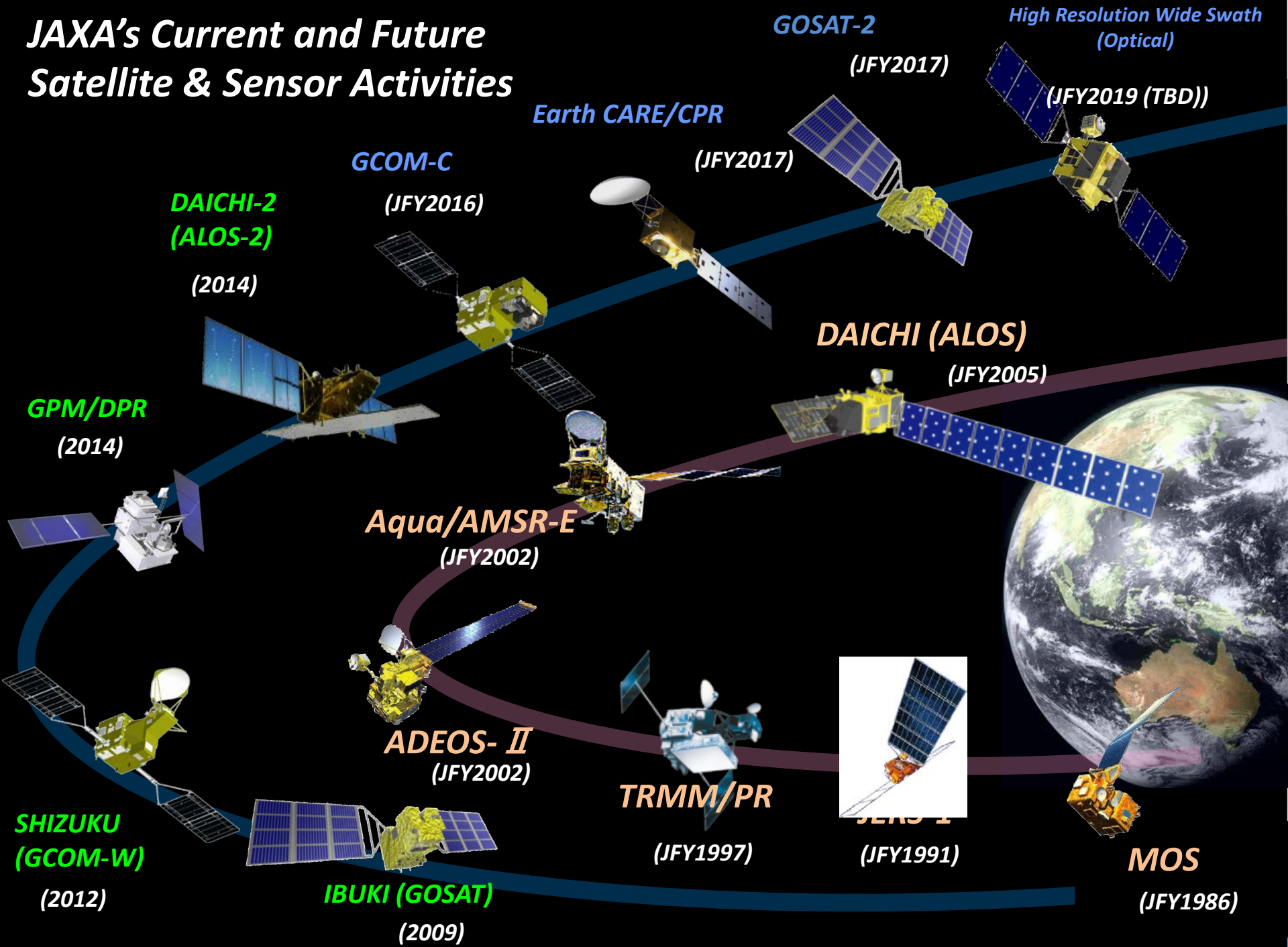


JAXA Agency Report

Satoko Horiyama MIURA

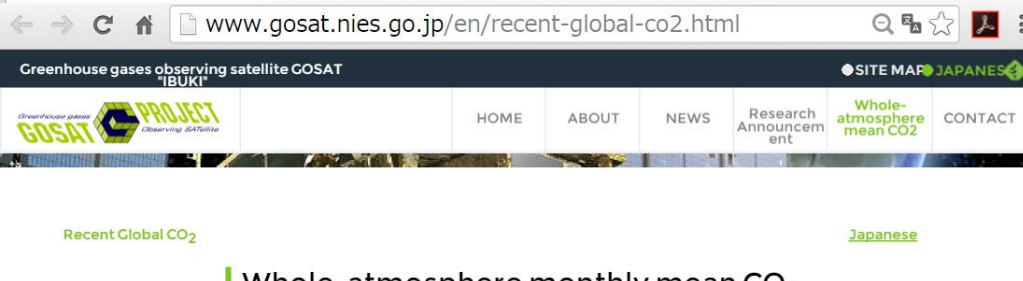
Space Applications and Operations Center (SAOC)
JAXA

JAXA's Current and Future Satellite & Sensor Activities



Public release of whole-atmosphere monthly mean CO₂ [GOSAT]

<http://www.gosat.nies.go.jp/en/recent-global-co2.html>

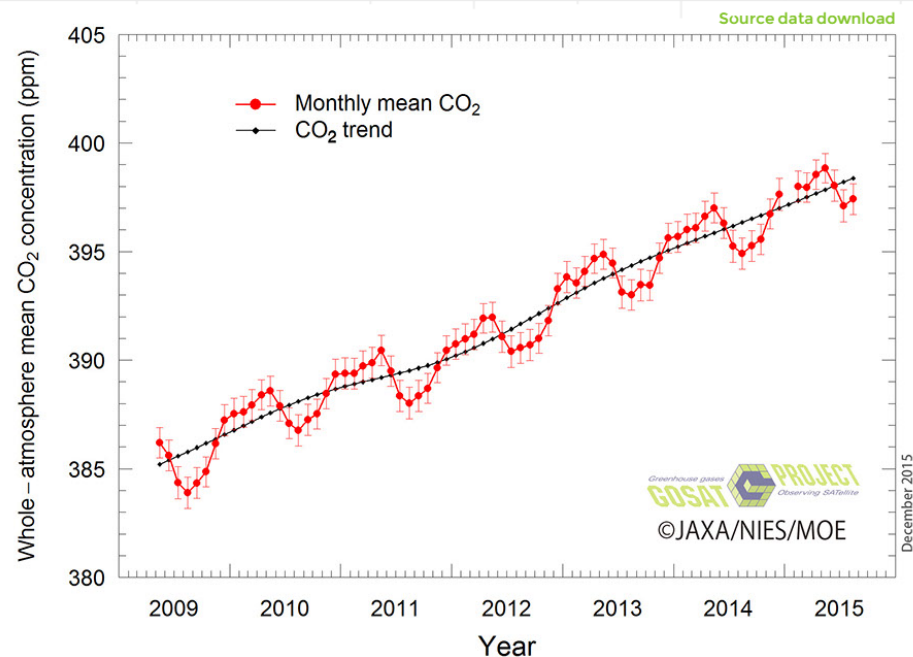


Whole-atmosphere monthly mean CO₂ concentration based on GOSAT observations — Recent data —

Monthly mean CO ₂ August 2015	397.4 ppm
CO ₂ trend (*) August 2015	398.4 ppm
CO ₂ growth in the past one year (**) August 2015 - August 2014	2.1 ppm/yr

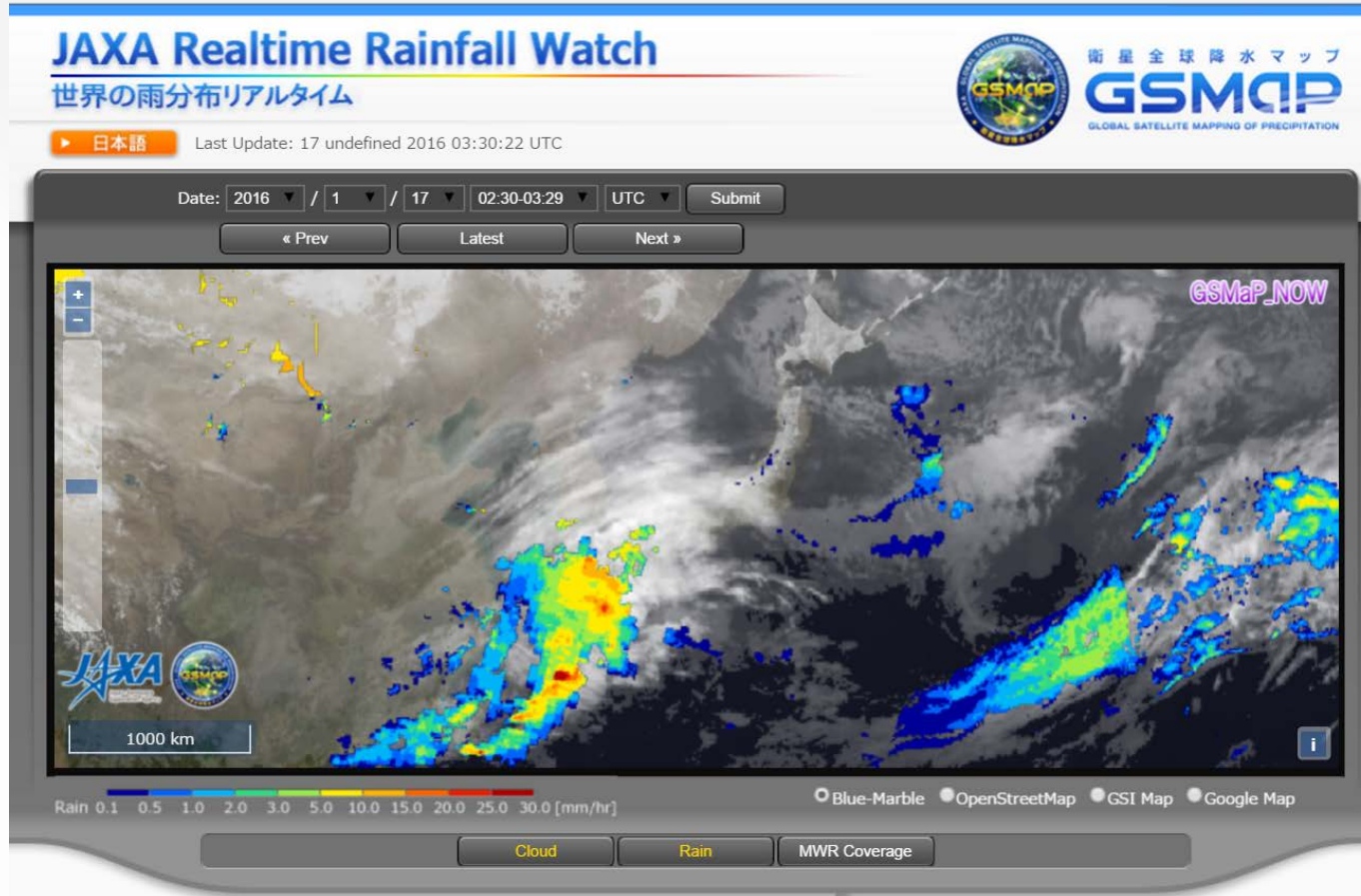
(*) CO₂ trend is a value on the CO₂ trend line derived by removing averaged seasonal fluctuations from the monthly CO₂ time series.

(**) CO₂ growth refers to an increase of CO₂ level on the trend line in the last one year.



※ The error bar on the red circle indicates uncertainty (one standard deviation) associated with the whole-atmosphere monthly mean.

JAXA Realtime Rainfall Watch



- The color images and the quicklook images of the geophysical data from the geostationary satellite of Japan Meteorological Agency (JMA), Himawari-8 is now available.

http://sharaku.eorc.jaxa.jp/GSMaP_NOW/index.htm

JERS-1 Data Distribution



- JERS-1 data (JAXA archive data) is now available on G-Portal(<https://www.gportal.jaxa.jp/gp/>).

**JERS-1 = (Japanese Earth Resources Satellite -1)*

- *Observation : February, 1992 – October, 1998*
- *Instruments*
 - *SAR : Resolution 18m*
 - *OPS (VNIR & SWIR): Resolution 18m*

Open and Free

Forest Monitoring System Using ALOS-2



- On Dec. 1, 2015, the Japan International Cooperation Agency (JICA) and JAXA announced the Initiative for Improvement of Forest Governance at the COP21.
 - The initiative will be conducted by a partnership between JICA and JAXA, and supporting private corporations are expected to join the initiative to contribute to the conservation of the world's tropical forests.
- The initiative will create a new tropical forest monitoring system that tracks deforestation and forest loss with ALOS2.
- With a resolution to 50 meters, the findings of the monitoring system will be updated about every six weeks on average to the JAXA website and other resources by March 2017.

Data distribution site(Tentative)

①

2015

9

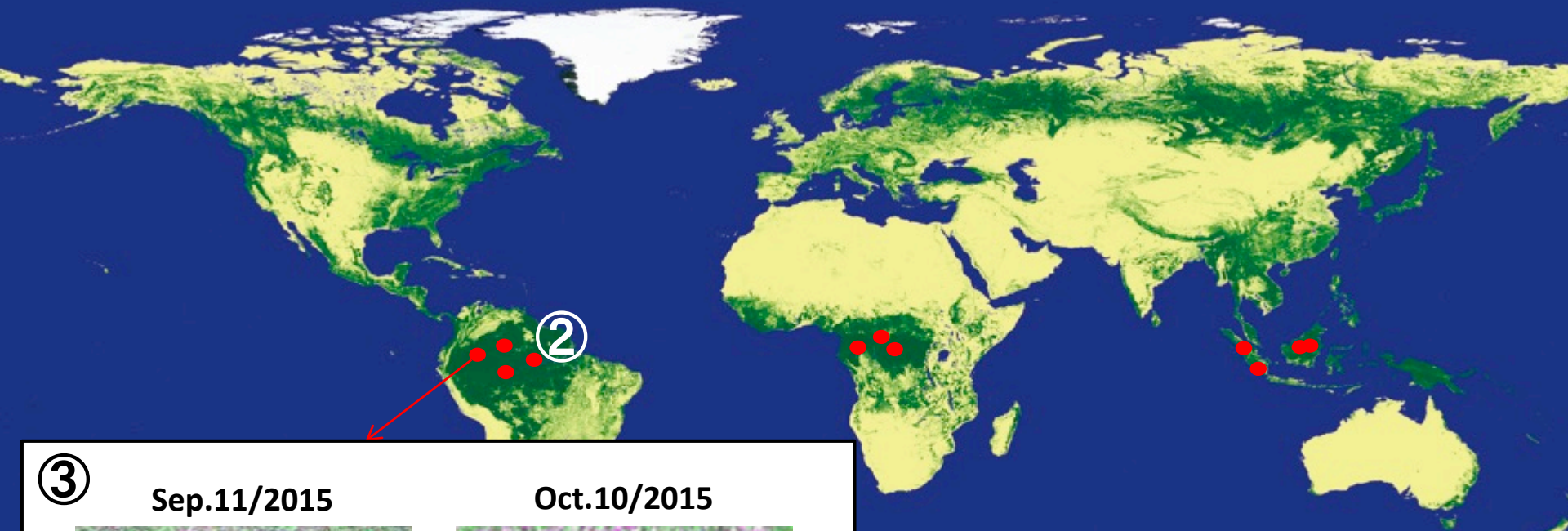
8

~

2015

10

23



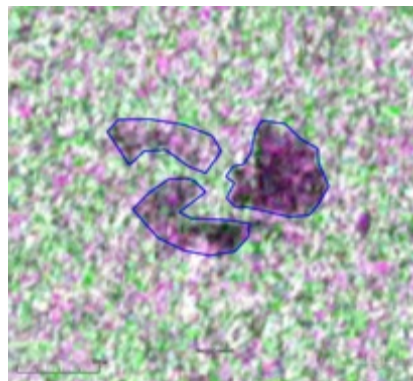
③

Sep.11/2015



Browsed image

Oct.10/2015



Polygon download

① Select date

> Display forest change area as red dot

② Select area(dot)

> Display extended images

③ Browse before and after of deforestation and download polygon d

Experiment in Closed Environment (simulating ISS)

- *Wanted: "8" persons for two-week- experiment*
- The 1st advertisement : Dec.24, 2015.



- Dec.28: More than 2,000 applications were received, stopped accepting new applications.
- Jan.4: Re-start accepting the application, due to so many inquiries.
- Jan. 12: Closed. In total, more than 4,400 applications.