



WGISS – 49

Hosted by

**Comisión Nacional de Actividades
Espaciales (CONAE)**

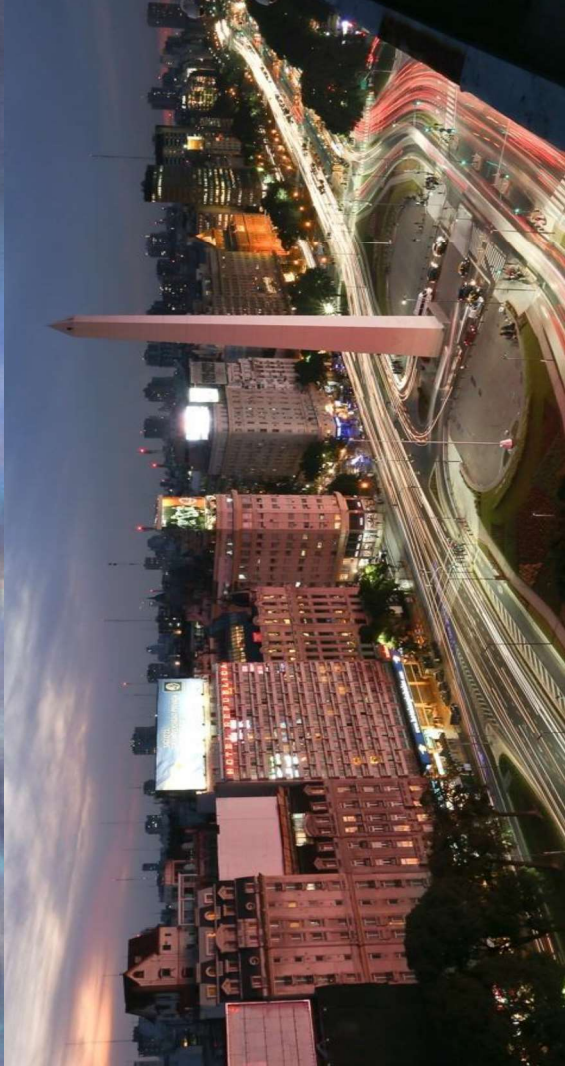
Buenos Aires, Argentina

April 20 – 23, 2020



Ministerio de Educación,
Cultura, Ciencia y Tecnología
Presidencia de la Nación

Buenos Aires city, Argentina





Buenos Aires city, Argentina



Buenos Aires city (Ciudad Autónoma de Buenos Aires) is the capital of Argentina. Please do not confuse it with the province of Buenos Aires, which covers a much larger area of the country. In some places and services the city is listed by its acronym, CABA.

Buenos Aires city is globally known for Tango dance and music. Its gastronomy is also famous offering tasty menus of exclusive products from the Pampas, Andes and Patagonia regions. Many cultural activities and options are available, or you can take a walk to enjoy 200 years of stunning architecture.

Tourism: <https://turismo.buenosaires.gob.ar/en>



Travel



Most international flights arrive at Ministro Pistarini International Airport, best known as Ezeiza (EZE), which is 32 km (20 miles) away from downtown Buenos Aires, a journey of about 50 minutes long.

For more information about the airport and flights, please visit the official website: <http://www.aa2000.com.ar/ezeiza>

There are also two domestic airports near Buenos Aires: Jorge Newbery Airport, best known as Aeroparque (AEP), and El Palomar (EPA).

To the city centre:

Once you get to the airport, you have several options to reach the city center : <http://www.aa2000.com.ar/ezeiza/Transporte?qa=EZE>

- Taxi “Ezeiza”: <http://www.taxiezeiza.com.ar/>

- Shuttle/Bus/remis: “Manuel Tienda León”
<http://www.tiendaleon.com/home/>



Ministerio de Educación,
Cultura, Ciencia y Tecnología
Presidencia de la Nación

Meeting venue

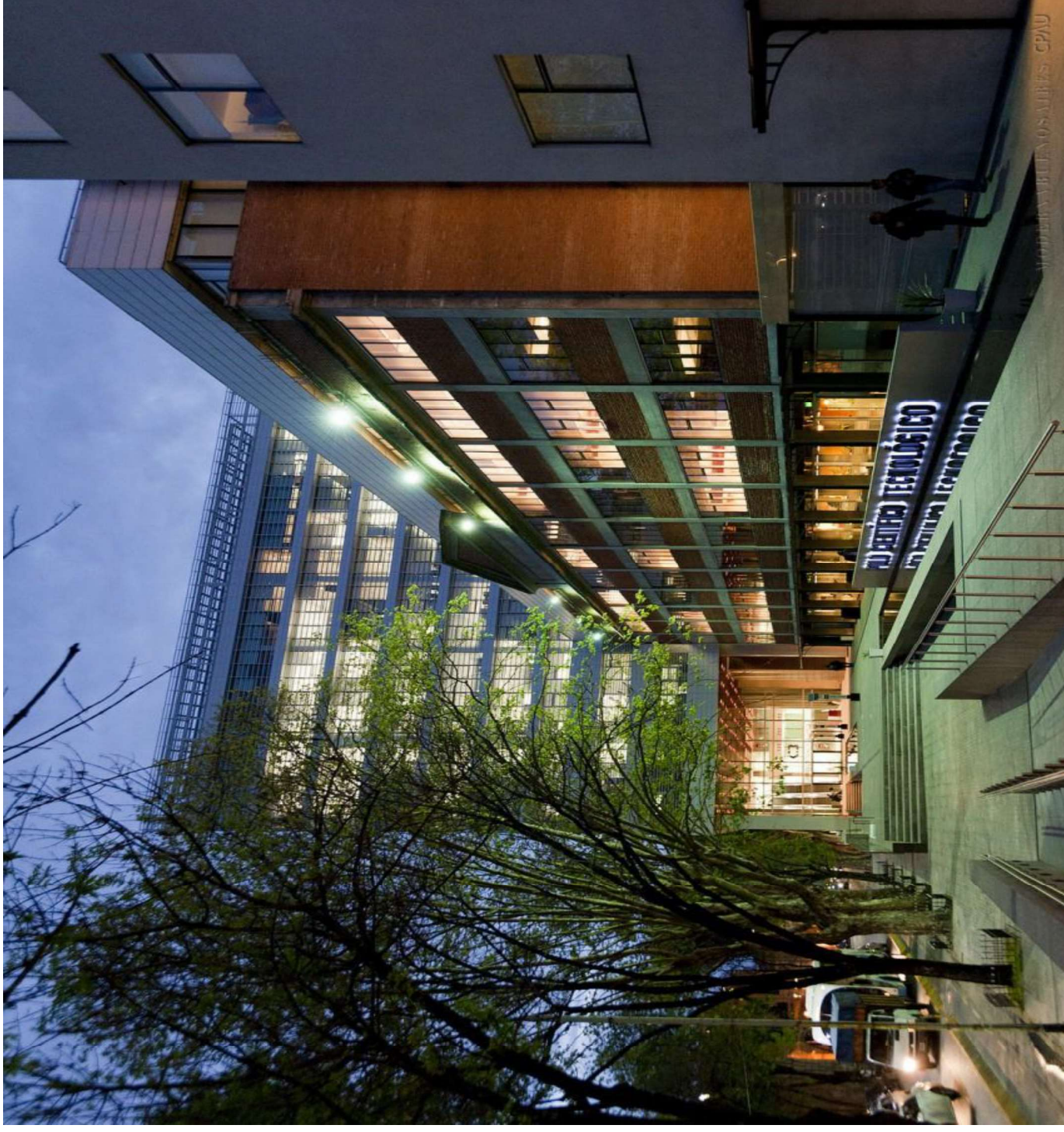


The meeting will be held in “Centro Cultural de la Ciencia – (C3)” in Palermo, a lively neighborhood of Buenos Aires city.

<http://cccienza.gob.ar/>

Godoy Cruz 2270, CABA

<https://goo.gl/maps/d72C1R7KgZJcnqHc6>





Public transport

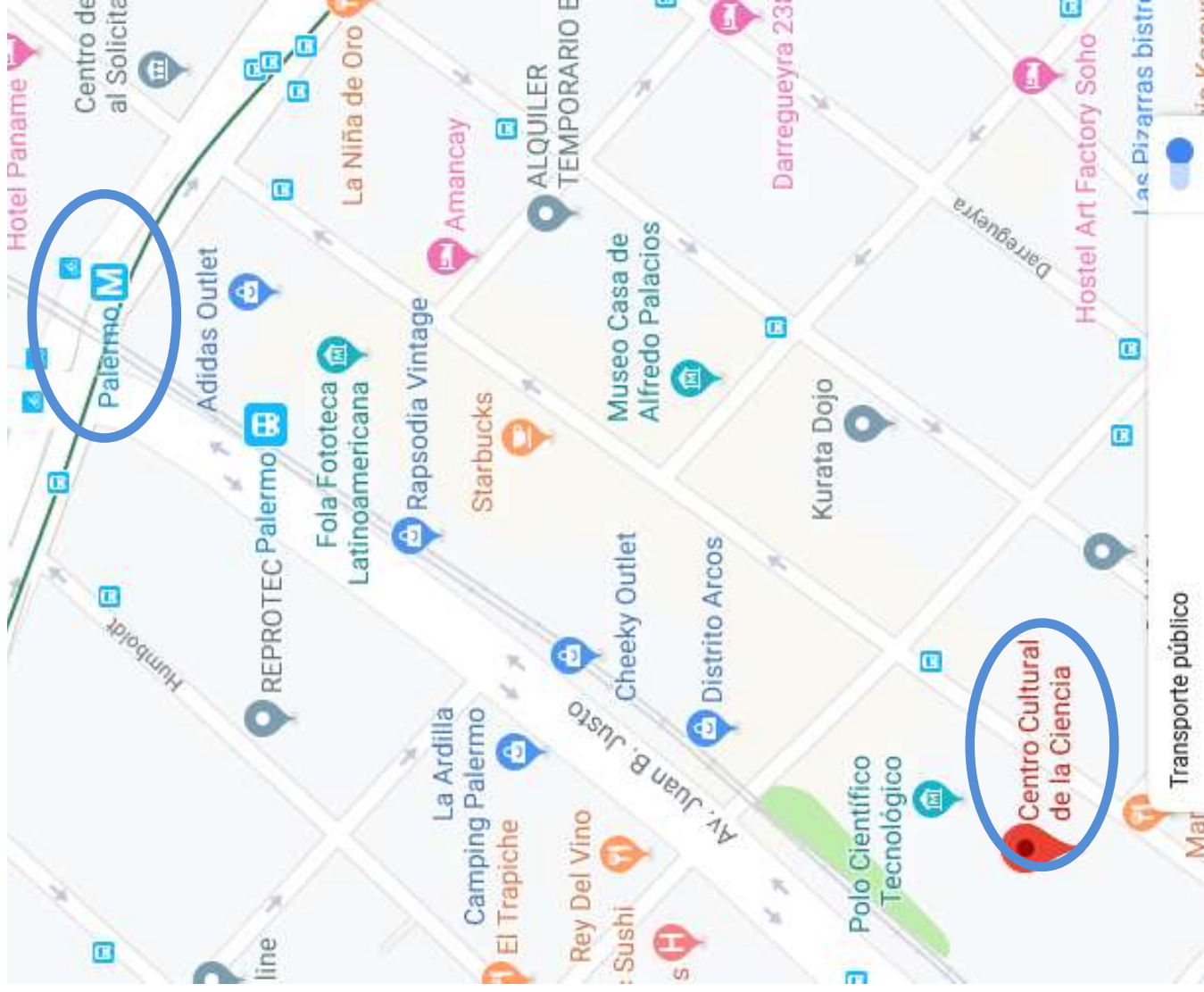


The Palermo subway station is at 300m and connects in 15' to the town center. (Look for the “Subte D” signal and Cathedral-Cathedral directions).

For Public transport (bus/subte) you will need a “SUBE” travelcard.

<https://youtu.be/cgHXMWww93o>

You can buy one at the station booth. The metro does not run between 11:00PM and 5:30AM approximately. On Saturdays starts at 6:00AM and on Sundays at 8:00AM. There are many bus lines, also, connecting to the town center running all night long.





Visa information

Individuals holding passports issued by the following countries do not require a visa to enter Argentina for tourism purposes:
<https://cnyor.cancilleria.gob.ar/en/node/1816>

If your country is not on the list, you will need a visa to enter Argentina. More information about the requirements and instructions on how to apply can be found in
<https://cnyor.cancilleria.gob.ar/en/node/1817>





Accommodation

A list of hotels nearby the Workshop venue:

Whyndham Dazzler Palermo

<https://www.wyndhamhotels.com/dazzler/destinations>

Krista Boutique Hotel <http://www.kristahotel.com.ar>

BA Sohotel <http://www.basohotel.com/>

Nuss <https://www.nusshotel.com/en-gb>

Malabia House <http://malabiahouse.com.ar/ingles/index.html>

Vain Boutique hotel <http://www.vainhotel.com/>

Hotel Cristoforo Colombo <http://www.hotelcc.com.ar/>



Further questions

For further help concerning the Scientific Organization of the Workshop you may contact Dr. Laura Frulla or Dr. Homero Lozza.

Contact

**Dra. Laura Frulla
CONAE**

**Av. Paseo Colón 751, 1st floor, Of. 12, CABA, Argentina
Email: lfrulla@conae.gov.ar**

**Dr. Homero Lozza
CONAE**

**Av. Paseo Colón 751, 1st floor, Of. 13, CABA, Argentina
Email: hlozza@conae.gov.ar**

