

CEOS Water Portal Status Update

WGISS-33

Tokyo, Japan – April 23-27, 2012

JAXA/Mission Operations System Office
Satoko Miura/ Atsushi Kawai

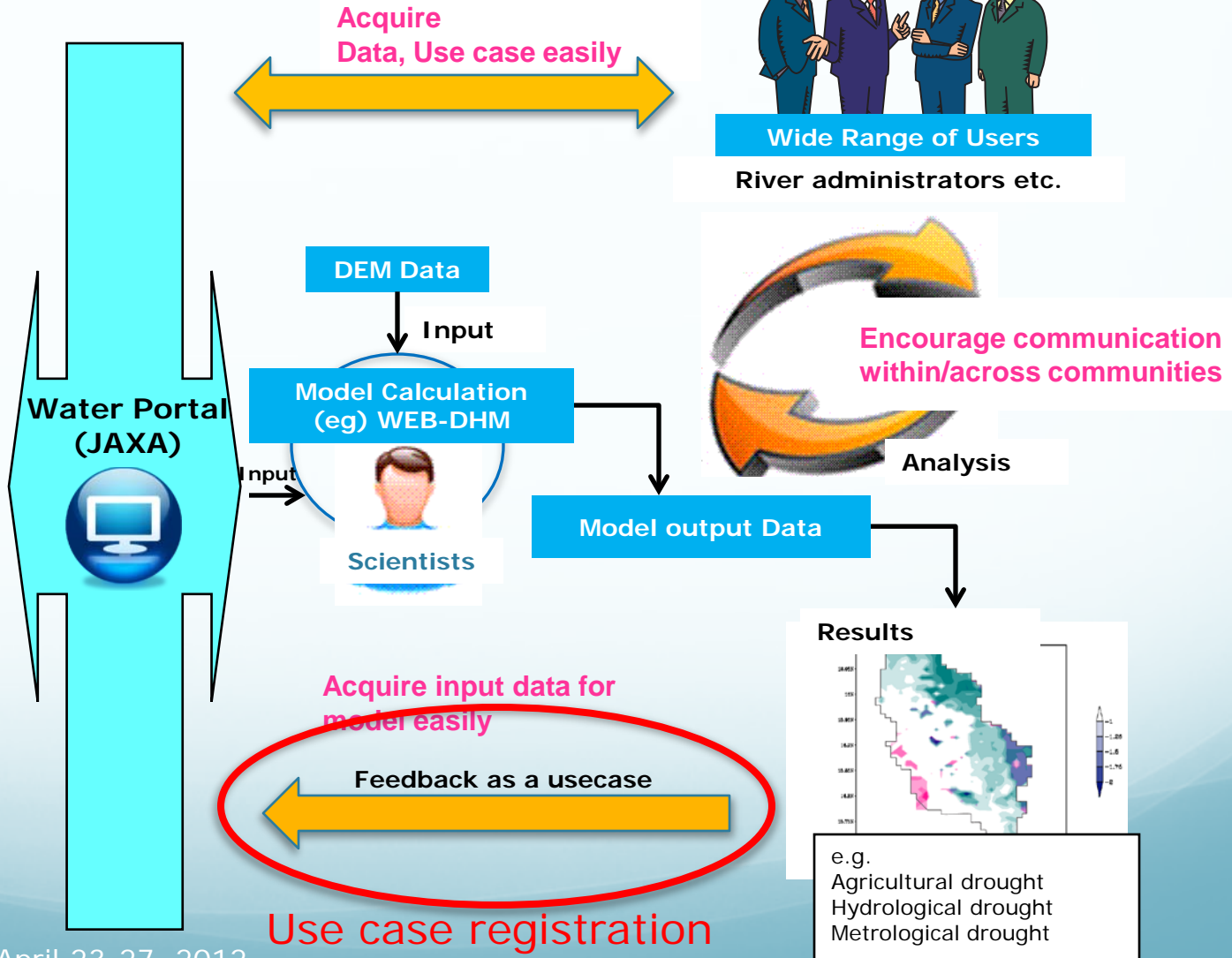
Update since WGISS-32

- New features
 - Compare service for MOLTS data
 - Registration service of use case
- Data Partners
 - Added 2 data centers
 - FLUX data (FLUNEXNET (NASA/ORNL DAAC))
 - GRACE level 3 data (NASA /JPL)
 - Propagate water portal and Search new partners on IGWCO* meeting at Feb. 2012
- Mid-term Planning
 - Described 5-yeras Road Map
- * IGWCO : Integrated Global Water Cycle Observation, Community of Practice (COP) for GEO water cycle strategy

Goal of CEOS Water Portal

Data centers

- In-situ hydrological data (CEOP)
- In-situ hydrological data (AWCI)
- MODEL output (CEOP)
- FLUX data (FLUXNET)
- Satellite data (CEOP, AWCI)
- Satellite data (NASA)
- Precipitation (NOAA/GPCC)
- ...



Features of CEOS Water Portal

<p>Support of Data Integration</p>	<ul style="list-style-type: none"> (1) Data Archive Centers in remote locations are connected using standard data access protocol (2) Single user interface to get the various type of data (in-situ, satellite, and model output)
<p>Functions to facilitate Easy Access</p>	<ul style="list-style-type: none"> (1) Different types of search features : Category and Map (2) Selected by time range, variable and station (3) View data (gif image) (4) <u>Compare MOLTS data (NEW!)</u> (5) Download data (NetCDF, ascii, GRIB (only Model output))
<p>Registration of Use Case (NEW!)</p>	<ul style="list-style-type: none"> (1) Users can register their research results (use cases) obtained by using data via our portal, which then becomes available for other users to reference at their data search on the portal.

IGWCO 2012 meeting

- As the status update since 2011 meeting, introduce current functions and 5-years road map
- Demonstrate current portal page
- Call for partners related to hydrology and water cycle
- Plan/Start to negotiate with following candidates;
 - GEO global draught portal (located on NOAA/National Climate Data Center)
 - GEO-JRC Global Flood Alert System (located on JRC)
 - GEWEX Data and Assessment Panel
 - GEOWOW (gateway to access GRDC data)

Data Partners

Candidate data center

In-situ hydrological data

GEMS/Water

IGWCO community



FLUXNET
(NASA/ORN.L.DAAC)



NOAA for GPCP
(Global Precipitation
Climatology Centre)
(WGISS)

WFS

OPeNDAP

OPeNDAP

OPeNDAP

UCAR
(University
Corporation for
Atmospheric
Research)



search
view
download

user



CEOS Water Portal

OPeNDAP

OPeNDAP
+ jblob

MPI
(Max Planck
Institute for
Meteorology)



University of Tokyo
(DIAS)



OPeNDAP

OPeNDAP

Model Output data
/MOLTS data



NASA/JPL
(PO.DAAC)
(WGISS)



NASA/GSFC
(WGISS)

Satellite data

List of data partners/variables(1/2)

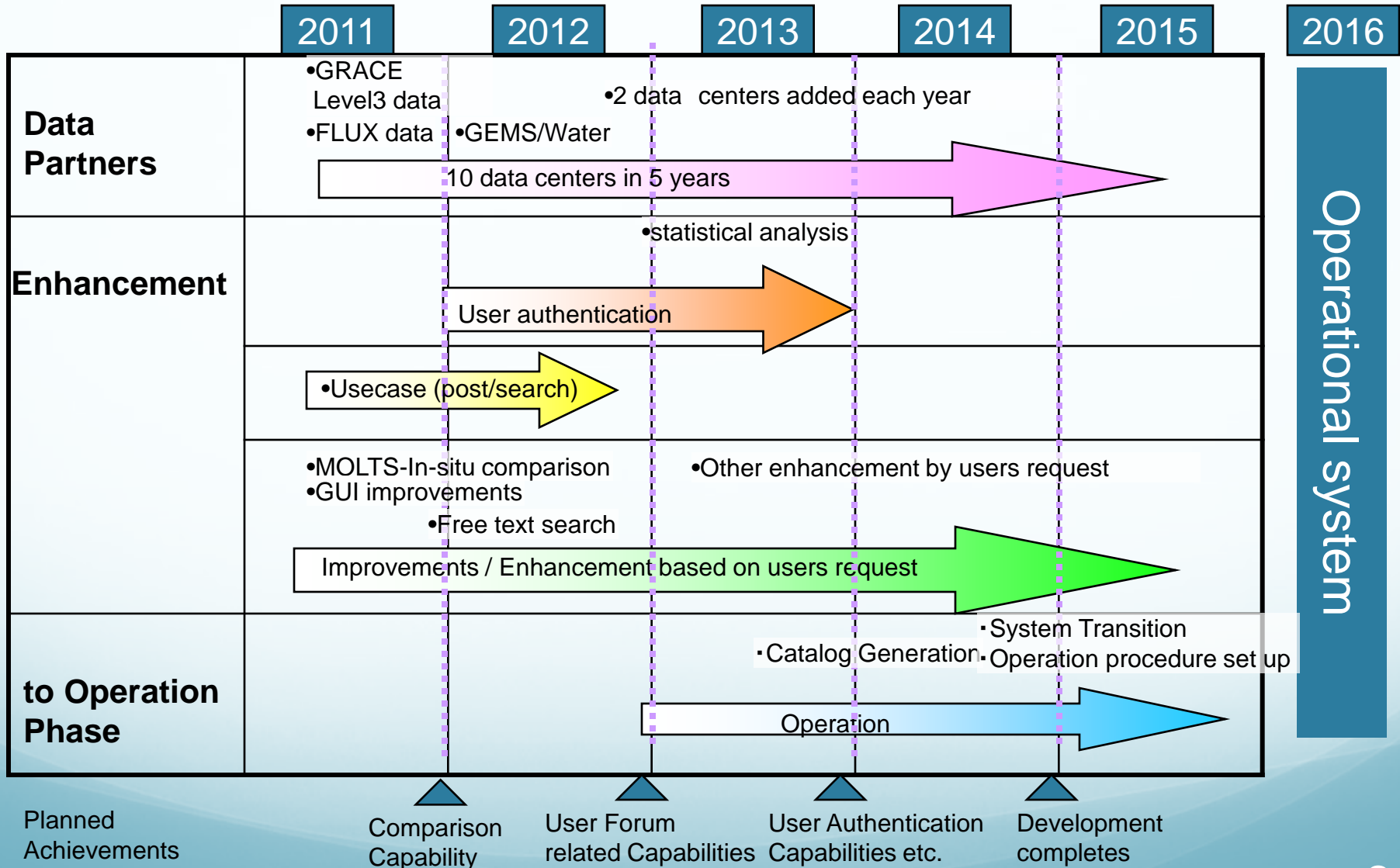
Data Partners	Data Types	Variables	Server Locations
CEOP	Satellite	PR, TMI, AMSR, AMSR-E, MODIS, GLI, SSMI, VISSR	University of Tokyo (Japan)
	Model (MOLTS)	surface pressure, skin temperature, precipitation amount in hour, brightness temperature surface, specific humidity, u-component of wind, v-component of wind, etc	MPI (Germany)
	Model(Gridded)	Air pressure, surface air pressure, air temperature, precipitation rate, snowfall amount, etc	MPI (Germany)
	In-situ	Surface Meteorological and Radiation Data Set Flux Data Set Soil Temperature and Soil Moisture Data Set Meteorological Tower Data Set	UCAR (USA)
AWCI	Model(MOLTS)	surface pressure, skin temperature, precipitation amount in hour, brightness temperature surface, specific humidity, u-component of wind, v-component of wind, etc	MPI (Germany)
	In-situ	Precipitation amount, River discharge, River water level, etc	University of Tokyo (Japan)

List of data partners/variables(2/2)

Data Partners	Data Types	Variables	Server Locations
NASA	Satellite	Airs level 3 data	NASA (GSFC)
NOAA (GPCC)	In-situ	Precipitation data	NOAA (USA)
NASA <u>(NEW!)</u>	Satellite	GRACE Level 3	NASA/JPL(PO. DACC)
FLUXNET <u>(NEW!)</u>	In-situ	FLUX data Fluxes of carbon dioxide, water vapor, and energy exchange, etc	NASA (ORNL DAAC)
GEMS/Water <u>(Planned)</u>	In-situ	Instantaneous Discharge , Dissolved Oxygen , Temperature, etc	GMES/Water (CANADA)
IGWCO community <u>(under negotiation)</u>	In-situ	Hydrological and Water cycle Data	-

We are planning to add 2 data centers per each year

Milestone



Operational system

Our web site & Contact us

CEOS water portal is available at :

<http://waterportal.ceos.org/>

Contact (“at” = @) :

Project leader: [miura.satoko at jaxa.jp](mailto:miura.satoko@jaxa.jp)

System support: [rd at restec.or.jp](mailto:rd@restec.or.jp)