	<h2>Analysis Ready Data</h2>	<p>Product Family Specification:</p> <p>Synthetic Aperture Radar</p>
---	------------------------------	--

Document Status

Product Family Specification, Synthetic Aperture Radar

Proposed revisions may be provided to: ard-contact@lists.ceos.org

Document History

Version	Date	Description of change	Affected CEOS-ARD product	Author
0.1	14-12-2022	Zero Draft based on the CARD4L NRB PFS v5.5, POL PFS 3.5, ORB PFS v1.0 and draft GSLC v0.1	-	Charbonneau Truckenbrodt
0.2	13-02-2023	Reformat to CEOS-ARD PFS template. Change "CARD4L" to "CEOS-ARD" Change "Target" to "Goal"	-	Rosenqvist
0.3	29-07-2023	Refinement of GSLC specifications and alignment with NRB, POL and ORB parameters. Annex reorganization and ORB and GSLC examples added	[GSLC]	Charbonneau, Zebker, Rosenqvist, Albinet, Small, Truckenbrodt
0.3.1	26-09-2023	New items 1.7.15 (Reference orbit) and 3.7 (Flattened Phase) added as Goal	[NRB] [POL]	Charbonneau
0.4	26-09-2023	Item 4.3 (Geometric accuracy). Clarification added to indicate whether absolute location accuracy (ALE) estimates refer to source data, ARD product, or both.	[NRB] [POL] [ORB] [GSLC]	Small, Chapman, Charbonneau, Rosenqvist, Albinet, Truckenbrodt
0.4.1	11-10-2023	Add product code in summary table		Rosenqvist
1.0	11-10-2023	CEOS-ARD for SAR PFS – including Geocoded Single-Look Complex v1.0 – endorsed at LSI-VC-14		LSI-VC

Contributing Authors

François Charbonneau, Natural Resources Canada, Canada
Ake Rosenqvist, soloEO / Japan Aerospace Exploration Agency, Japan
John Truckenbrodt, German Aerospace Centre (DLR), Germany
Clément Albinet, European Space Agency (ESA), Italy
David Small, University of Zurich, Switzerland
Bruce Chapman, Jet Propulsion Laboratory, USA
Howard Zebker, Stanford University, USA
Danilo Dadamia, CONAE, Argentina
Benjamin Deschamps, Environment and Climate Change, Canada
Guillaume Hajduch, Collecte Localisation Satellites, France
Josef Kellndorfer, Earth Big Data, USA
Marco Lavallo, Jet Propulsion Laboratory, USA
Thomas Logan, Alaska Satellite Facility, USA
Franz Meyer, Alaska Satellite Facility, USA
Nuno Miranda, European Space Agency (ESA), Italy
Muriel Pinheiro, European Space Agency (ESA), Italy
Marko Repse, Sinergise, Slovenia
HariPriya Sakethapuram, ISRO, India
Andreia Siqueira, Geoscience Australia, Australia
Takeo Tadono, Japan Aerospace Exploration Agency, Japan
Medhavy Thankappan, Geoscience Australia, Australia
Antonio Valentino, RHEA *for* European Space Agency (ESA), Italy
Anna Wendleder, German Aerospace Centre (DLR), Germany
Fang Yuan, Digital Earth Africa, Australia
Zheng-Shu Zhou, CSIRO, Australia

CEOS Analysis Ready Data Definition

“CEOS Analysis Ready Data (CEOS-ARD) are satellite data that have been processed to a minimum set of requirements and organized into a form that allows immediate analysis with a minimum of additional user effort and interoperability both through time and with other datasets.”

Description

Product Family Specification Title: Synthetic Aperture Radar (CEOS-ARD SAR)
Applies to: Data collected by Synthetic Aperture Radar sensors

Background to CEOS-ARD for Synthetic Aperture Radar:

The CEOS Analysis Ready Data (CEOS-ARD) Product Family Specification (PFS) for Synthetic Aperture Radar (SAR) data is specifically aimed at users interested in exploring the potential of SAR but who may lack the expertise or facilities for SAR processing.

This CEOS-ARD for Synthetic Aperture Radar PFS incorporates, into a single generic document, the following four CEOS-ARD SAR specifications endorsed by CEOS Land Surface Imaging-Virtual Constellation (CEOS LSI-VC):

- Normalised Radar Backscatter [version 5.5]
- Polarimetric Radar [version 3.5]
- Ocean Radar Backscatter [version 1.0]
- Geocoded Single-Look Complex [version 1.0]

The **CEOS-ARD Normalised Radar Backscatter [NRB]** specification describes products that have been subject to Radiometric Terrain Correction (RTC) and are provided in the Gamma-Nought (γ_T^0) backscatter convention (Small, 2011), which mitigates the variations from diverse observation geometries and is recommended for most land applications. An additional metadata layer can be optionally provided for conversion of γ_T^0 to Sigma-Nought (σ_T^0) backscatter layer for compatibility with legacy software or numerical models. As the [NRB] product contains backscatter values only, it cannot be directly used for SAR polarimetry or interferometric applications that require relative polarization phase or local phase estimates respectively. However, as an option, a “flattened” phase data layer can be provided with an [NRB] product for enabling InSAR analysis. The flattened phase is the interferometric phase, with respect to a reference orbit and to a DEM, for which the topographic phase contribution is removed.

The **CEOS-ARD Polarimetric Radar [POL]** product format is an extension of the CEOS-ARD Normalised Radar Backscatter format **[NRB]**. This extension is required in order to better support Level-1 SLC polarimetric data, including full-polarimetric modes (e.g., RADARSAT-2, ALOS-2/4, SAOCOM-1 and future missions), and hybrid or linear dual-polarimetric modes (i.e., Compact Polarimetric mode available on RCM, SAOCOM and the upcoming NISAR mission). The **[POL]** product can be defined in two processing levels:

- The normalised covariance matrix **[CovMat]** representation (C2 or C3) which preserves the inter-channel polarimetric phase(s) and maximizes the available information for users. Interoperability within current CEOS-ARD SAR backscatter definition is preserved, since diagonal elements of the covariance matrix are backscatter intensities. Scattering information enhancement can be achieved by applying incoherent polarimetric decomposition techniques (e.g., Freeman-Durden, van Zyl, Cloude-Pottier, Yamaguchi-based) directly on the C2 or C3 matrix.
- Polarimetric Radar Decomposition **[PRD]** refers to ARD products where polarimetric information is broken down into simplified parameters to facilitate user interpretation of the data. They are derived from coherent or incoherent polarimetric decomposition techniques.

Notice and Limitations [POL]

For Polarimetric Radar **[POL]** products, optimal incoherent Polarimetric Radar Decomposition **[PRD]** should be performed under the slant range projection (Gens et al., 2013, Toutin et al., 2013). In order to minimise bias in the CEOS-ARD SAR Level-2a covariance matrix product, speckle filtering and averaging of the covariance matrix should be applied in the slant range projection, and geocoding should be performed using nearest-neighbour resampling. Specifically, nearest-neighbour resampling ensures that the averaged covariance matrix elements in slant range and in geocoded ground projection are exactly the same. Consequently, the polarimetrically derived parameters are exactly equal in both approaches (assuming that no further averaging is performed on the ARD product for decomposing the polarimetric information). Bilinear and average resampling methods are also suitable for resampling the covariance matrix, but some differences with polarimetric parameters generated in slant range and then resampled (bilinear) might be observed on sloped terrains. Even if Sinc interpolation may be more robust for spatial resampling, it does not preserve covariance matrix integrity, and should consequently not be used for this ARD product.

It is recommended that ARD providers who desire to distribute **[PRD]** products decompose the polarimetric information starting from Level-1 SLC data and then geocode the derived parameters rather than use the **[CovMat]** ARD product. Resampling can be performed using any of the supported methods (nearest-neighbour, bilinear, average, bi-cubic spline or Lanczos are recommended), which need to be indicated in the product metadata. Note that coherent decomposition techniques cannot be performed on **[CovMat]** ARD products.

Covariance matrix products contain a variable number of layers (or bands) with different data types depending on the polarimetric mode (full or dual) and decomposition technique. The **[CovMat]** products for the C2 matrix have 3 layers (2 real-valued diagonal elements and 1 complex-valued off-diagonal element). **[CovMat]** products for the C3 matrix have 6 layers (3 real-valued diagonal elements and 3 complex-valued off-diagonal elements). Layers that can be obtained via a complex conjugation of other layers are not provided within the product. Polarimetric Decomposition products contain typically 2 to 4 (or more) real-valued layers depending on the particular decomposition algorithm. Within the **[CovMat]** product files, ARD layers are organized in order to reduce access delays and maximize efficiency in extracting the desired information. In **[CovMat]** products, geographically contiguous samples for each layer may be stored next to each other and organized “layer by layer”. Alternatively, samples belonging to the same covariance matrix might be stored next to each other and organized “matrix by matrix”. **[PRD]** products are organized “layer by layer”, i.e., with bands corresponding to the output of the polarimetric decomposition stored next to each other.).

The **CEOS-ARD Ocean Radar Backscatter [ORB]** product specification describes products that have been projected on a geoid and are provided in the Sigma-Nought (σ^0) backscatter convention, which is recommended for most ocean applications. Backscatter may be calibrated to the ellipsoid (σ_E^0) or radiometrically terrain corrected (σ_T^0) prior to geometric terrain correction. As the basic **[ORB]** product contains backscatter values only, it *cannot* be directly used for SAR polarimetry or interferometric applications that require local phase estimates. Nonetheless, an advanced **[ORB]** product could include the upper diagonal of the polarimetric σ^0 covariance matrix for enabling advanced polarimetric analysis (similar to the **[POL]** product).

The **CEOS-ARD Geocoded Single-Look Complex (GSLC)** product is relevant to interferometric studies. The **[GSLC]** product is derived from the range-Doppler (i.e. slant range) Single-Look Complex (SLC) product using a DEM and the orbital state vectors and output in the map projected system. The phase of a geocoded SLC is “flattened” with respect to a reference orbit and to a DEM, to eliminate topographic phase contributions [Zebker et al., 2017 and Zheng and Zebker, 2017]. The sample spacing of the **[GSLC]** product in the map coordinate directions is comparable to the full resolution original SLC product. The **[GSLC]** product can be directly overlaid on a map or combined with other similar **[GSLC]** products to derive interferograms and create change maps, for example. Since the **[GSLC]** phase is flattened, the phase difference between two **[GSLC]** products acquired on a same relative orbit produces an interferogram referring only to surface displacement and noise (i.e., no topographic fringes). The **[GSLC]** product may optionally be radiometrically terrain corrected such that the squared amplitude yields γ_T^0 .

As can be seen from the above PFS descriptions, only a few minor details in terms of generated parameters and/or the addition of supplemental data distinguish these CEOS-ARD products. In part, they are to a large extent all backward-compatible. For example, [POL] products implicitly include [NRB] products, while a coastal [NRB] or [POL] product can simply be made compatible with other [ORB] products by applying gamma-to-sigma conversion. Just as [GSLC] can be converted to [NRB], the inverse conversion can be made true by including the optional topographically flattened phase. In this way a [NRB] or [POL] product can be used like a [GSLC] for InSAR applications. Consequently, it becomes obvious that they all can follow a common approach, in terms of content and structure, in order to optimize their interoperability.

For this generic **CEOS-ARD for Synthetic Aperture Radar** PFS, as for the individual [NRB], [POL], [ORB], and [GSLC] PFSs, metadata requirements are defined under two categories: Threshold and Goal. **Threshold requirements** refer to metadata parameters or data files which are mandatorily required in a product in order to be CEOS-ARD compliant. **Goal requirements** (formerly referred to as Target) are complementary metadata parameters or data files that are desirable or more accurate but more constraining/challenging to achieve depending on the SAR missions and the data provider constraints. Since this document integrates four CEOS-ARD PFSs, it is worth noting that some requirements have been “relaxed” for a few Threshold parameters, depending on the applications/environment of the CEOS-ARD product. Exceptions are identified in the tables by specifying the usage.

Definitions and Abbreviations

Ancillary Data	Data other than instrument measurements, originating in the instrument itself or from the satellite, required to perform processing of the data. They include orbit data, attitude data, time information, spacecraft engineering data, calibration data, data quality information, and data from other instruments.
Auxiliary Data	The data required for instrument processing, which does not originate in the instrument itself or from the satellite. Some auxiliary data will be generated in the ground segment, whilst other data will be provided from external sources.
CEOS-ARD	Committee on Earth Observation Satellites - Analysis Ready Data
CovMat	Normalised Radar Covariance Matrix
DOI	Digital Object Identifier
GSLC	Geocoded Single-Look Complex
InSAR	Interferometric Radar
Metadata	Structured information that describes other information or information services. With well-defined metadata, users should be able to get basic information about data without a need to have knowledge about its entire content.
NRB	Normalised Radar Backscatter
Pixel Spacing	Processed sample distance
POL	Polarimetric Radar
PRD	Polarimetric Radar Decomposition
RTC	Radiometrically Terrain Corrected
Spatial Resolution	The smallest size objects that can be distinguished by the sensor at the ground surface.
Spatial Sampling Distance	Spatial sampling distance is the great circle distance on the reference surface distance between adjacent spatial samples on the Earth's surface.

Requirements

General Metadata

These are metadata records describing a distributed collection of pixels. The collection of pixels referred to must be contiguous in space and time. General metadata should allow the user to assess the overall suitability of the dataset and must meet the requirements listed below. The column “CEOS-ARD product” indicates to which CEOS-ARD SAR product (NRB, POL, ORB, GSLC) the parameter refers.

#	Parameter	CEOS-ARD product	Requirements	Self-Assessment
1.1	Traceability	[NRB] [POL] [ORB] [GSLC]	<p><u>Threshold (Minimum) Requirements</u> Not required.</p>	<p><u>Achieved level:</u> Threshold</p> <p><u>Explanation / Justification:</u></p>
			<p><u>Goal (Desired) Requirements</u> Data must be traceable to SI reference standard.</p> <p><i>Note 1: Relationship to 3.5. Traceability requires an estimate of measurement uncertainty.</i></p> <p><i>Note 2: Information on traceability should be available in the metadata as a single DOI landing page.</i></p>	<p>Not Required</p> <p><u>Other feedback:</u> ...</p>
1.2	Metadata Machine Readability	[NRB] [POL] [ORB] [GSLC]	<p><u>Threshold (Minimum) Requirements</u> Metadata is provided in a structure that enables a computer algorithm to be used consistently and to automatically identify and extract each component part for further use.</p>	<p><u>Achieved level:</u> Threshold</p> <p><u>Explanation / Justification:</u></p>

#	Parameter	CEOS-ARD product	Requirements	Self-Assessment
			<p><u>Goal (Desired) Requirements</u> As threshold, but metadata is formatted in accordance with CEOS-ARD SAR Metadata Specifications, v.1.0, or in a community endorsed standard that facilitates machine-readability, such as ISO 19115-2, Climate and Forecast (CF) convention and the Attribute Convention for Data Discovery (ACDD), etc.</p>	<p>Metadata stored in HDF5 file <u>Other feedback:</u> ...</p>
1.3	Product Type	[NRB] [POL] [ORB] [GSLC]	<p><u>Threshold (Minimum) Requirements</u> CEOS-ARD product type name – or names in case of compliance with more than one product type – and, if required by the data provider, copyright.</p>	<p><u>Achieved level:</u> Threshold <u>Explanation / Justification:</u> ceosAnalysisReadyDataProductType = "Normalised Radar Backscatter" <u>Other feedback:</u> ...</p>
			<p><u>Goal (Desired) Requirements</u> As threshold.</p>	
1.4	Document Identifier	[NRB] [POL] [ORB] [GSLC]	<p><u>Threshold (Minimum) Requirements</u> Reference to CEOS-ARD for Synthetic Aperture Radar PFS document as URL.</p>	<p><u>Achieved level:</u> Threshold <u>Explanation / Justification:</u> ceosAnalysisReadyDataDocumentIdentifier = "https://ceos.org/ard/files/PFS/NRB/v5.5/CARD4L-PFS_NRB_v5.5.pdf" <u>Other feedback:</u> ...</p>
			<p><u>Goal (Desired) Requirements</u> As threshold.</p>	

#	Parameter	CEOS-ARD product	Requirements	Self-Assessment
1.5	Data Collection Time	[NRB] [POL] [ORB] [GSLC]	<p><u>Threshold (Minimum) Requirements</u> Number of source data acquisitions of the data collection is identified. The start and stop UTC time of data collection is identified in the metadata, expressed in date/time. In case of composite products, the dates/times of the first and last data takes and the per-pixel metadata 2.8 (Acquisition ID Image) is provided with the product.</p>	<p><u>Achieved level: Threshold</u></p> <p><u>Explanation / Justification:</u></p> <p>zeroDopplerEndTime = "2023-10-08T22:53:10.500398Z" zeroDopplerStartTime = "2023-10-08T22:53:07.427341Z"</p> <p><u>Other feedback: ...</u></p>
			<p><u>Goal (Desired) Requirements</u> As threshold.</p>	
1.6	Source Data Attributes		<p>Subsection describing (detailing) <u>each SAR acquisition</u> used to generate the ARD product.</p> <p><i>Note: Source data attribute information are described for each acquisition and sequentially identified as acqID= 1, 2, 3, ...</i></p>	

#	Parameter	CEOS-ARD product	Requirements	Self-Assessment
1.6.1	Source Data Access	[NRB] [POL] [ORB] [GSLC]	<p><u>Threshold (Minimum) Requirements</u> The metadata identifies the location from where the source data can be retrieved, expressed as a URL or DOI.</p>	<p><u>Achieved level:</u> Threshold</p> <p><u>Explanation / Justification:</u></p>
			<p><u>Goal (Desired) Requirements</u> The metadata identifies an online location from where the data can be consistently and reliably retrieved by a computer algorithm without any manual intervention being required.</p>	<p>dataAccess = "https://search.asf.alaska.edu/#/?dataset=SENTINEL-1&productTypes=SLC"</p> <p><u>Other feedback:</u> ...</p>
1.6.2	Instrument	[NRB] [POL] [ORB] [GSLC]	<p><u>Threshold (Minimum) Requirements</u> The instrument used to collect the data is identified in the metadata:</p> <ul style="list-style-type: none"> - Satellite name - Instrument name 	<p><u>Achieved level:</u> Threshold</p> <p><u>Explanation / Justification:</u></p>
			<p><u>Goal (Desired) Requirements</u> As threshold, but including a reference to the relevant CEOS Missions, Instruments and Measurements Database record.</p>	<p>instrumentName = "Sentinel-1A CSAR"</p> <p><u>Other feedback:</u> ...</p>
1.6.3	Source Data Acquisition Time	[NRB] [POL] [ORB] [GSLC]	<p><u>Threshold (Minimum) Requirements</u> The start date and time of source data is identified in the metadata, expressed in UTC in date and time, at least to the second.</p>	<p><u>Achieved level:</u> Threshold</p> <p><u>Explanation / Justification:</u></p>
			<p><u>Goal (Desired) Requirements</u> As threshold.</p>	<p>zeroDopplerStartTime = "2023-10-08T22:53:07.427341Z"</p> <p><u>Other feedback:</u> ...</p>

#	Parameter	CEOS-ARD product	Requirements	Self-Assessment
1.6.4	Source Data Acquisition Parameters	[NRB] [POL] [ORB] [GSLC]	<p>Threshold (Minimum) Requirements Acquisition parameters related to the SAR antenna:</p> <ul style="list-style-type: none"> - Radar band - Centre frequency - Observation mode (i.e., Beam mode name) - Polarization(s) (listed as in original product) - Antenna pointing [Right/Left] - Beam ID (i.e., Beam mode Mnemonic) <p>Goal (Desired) Requirements As threshold.</p>	<p><u>Achieved level:</u> Threshold</p> <p><u>Explanation / Justification:</u></p> <p>radarBand = "C" centerFrequency = 5405000454.33435 acquisitionMode = "IW" listOfPolarizations = "HHHV" lookDirection = "right" acquisitionMode = "IW"</p> <p><u>Other feedback:</u> ...</p>
1.6.5	Source Data Orbit Information	[NRB] [POL] [ORB] [GSLC]	<p>Threshold (Minimum) Requirements Information related to the platform orbit used for data processing:</p> <ul style="list-style-type: none"> - Pass direction [asc/desc] * - Orbit data source [e.g., predicted/ definite/ precise/ downlinked, etc.] <p><i>* For source data crossing the North or South Pole, it is recommended to produce two distinct CEOS-ARD products and to use the appropriate "Pass direction" in each.</i></p> <p>Goal (Desired) Requirements As threshold, including also:</p> <ul style="list-style-type: none"> - Platform heading angle expressed in degrees [0 360] from North - Orbit data file containing state vectors (minimum of 5 state vectors, from 10% of scene length <i>before</i> start time to 10% of scene length <i>after</i> stop time) - Platform (mean) altitude. 	<p><u>Achieved level:</u> Threshold</p> <p><u>Explanation / Justification:</u></p> <p>orbitPassDirection = "ascending" orbitType = "RES restituted orbit"</p> <p><u>Other feedback:</u> ...</p>

#	Parameter	CEOS-ARD product	Requirements	Self-Assessment
1.6.6	Source Data Processing Parameters	[NRB] [POL] [ORB] [GSLC]	<p><u>Threshold (Minimum) Requirements</u> Processing parameters details of the source data:</p> <ul style="list-style-type: none"> - Processing facility - Processing date - Software version - Product level - Product ID (file name) - Azimuth number of looks - Range number of looks (separate values for each beam, as necessary) <p><u>Goal (Desired) Requirements</u> As threshold, plus additional relevant processing parameters, e.g., range- and azimuth look bandwidth and LUT applied.</p>	<p><u>Achieved level:</u> Threshold</p> <p><u>Explanation / Justification:</u></p> <pre>institution = "NASA JPL" processingDateTime = "2023-10-09T14:27:52.974847Z" productVersion = "1.0" isce3Version = "0.15.0" productLevel = "L2" netcdf OPERA_L2_RTC-S1_T033-069005-IW1_20231008T225307Z_20231009T142749Z_S1A_30_v1.0 azimuthLooks = 1 slantRangeLooks = 1</pre> <p><u>Other feedback:</u> ...</p>
1.6.7	Source Data Image Attributes	[NRB] [POL] [ORB] [GSLC]	<p><u>Threshold (Minimum) Requirements</u> Image attributes related to the source data:</p> <ul style="list-style-type: none"> - Source Data geometry (slant range/ground range) - Azimuth pixel spacing - Range pixel spacing - Azimuth resolution - Range resolution - Near range incident angle - Far range incident angle 	<p><u>Achieved level:</u> Threshold</p> <p><u>Explanation / Justification:</u></p> <pre>productLevel:description = "Product level of the source data. LOA: Unprocessed instrument data; LOB: Reformatted, unprocessed instrument data; L1: Processed instrument data in radar coordinates"</pre>

#	Parameter	CEOS-ARD product	Requirements	Self-Assessment
			<p>Goal (Desired) Requirements Geometry of the image footprint expressed in WGS84 in a standardised format (e.g., WKT).</p>	<p>system; and L2: Processed instrument data in geocoded coordinates system" ; productLevell = "L1" slantRangeSpacing = 2.32956211471532 zeroDopplerTimeSpacing = 0.0020555563 azimuthResolutionInMeters = 22.5 slantRangeResolutionInMeters = 2.7 nearRangeIncidenceAngle = 30.59468 farRangeIncidenceAngle = 36.4203</p> <p><u>Other feedback:</u> ...</p>
1.6.8	Sensor Calibration	[NRB] [POL] [ORB] [GSLC]	<p>Threshold (Minimum) Requirements Not required.</p> <p>Goal (Desired) Requirements Sensor calibration parameters are identified in the metadata or can be accessed using details included in the metadata. Ideally this would support machine to machine access.</p>	<p><u>Achieved level:</u> Threshold</p> <p><u>Explanation / Justification:</u> Not Required</p> <p><u>Other feedback:</u> ...</p>
1.6.9	Performance Indicators	[NRB] [POL] [ORB] [GSLC]	<p>Threshold (Minimum) Requirements Provide performance indicators on data intensity noise level ($NE\sigma^0$ and/or $NE\beta^0$ and/or $NE\gamma^0$ (noise equivalent Sigma- and/or Beta- and/or Gamma-Nought)). Provided for each polarization channel when available.</p> <p>Parameter may be expressed as the mean and/or minimum and maximum noise equivalent values of the source data.</p> <p>Values do not need to be estimated individually for each product, but may be estimated once for each acquisition mode, and annotated on all products.</p>	<p><u>Achieved level:</u> Threshold</p> <p><u>Explanation / Justification:</u> maxNoiseEquivalentSigmaZero = -22</p> <p><u>Other feedback:</u> ...</p>

#	Parameter	CEOS-ARD product	Requirements	Self-Assessment
			<p><u>Goal (Desired) Requirements</u> Provide additional relevant performance indicators (e.g., ENL, PSLR, ISLR, and performance reference DOI or URL).</p>	
1.6.10	Source Data Polarimetric Calibration Matrices	[NRB] [POL] [ORB] [GSLC]	<p><u>Threshold (Minimum) Requirements</u> Not required.</p>	<p><u>Achieved level:</u> Threshold</p> <p><u>Explanation / Justification:</u></p> <p>Not Required</p> <p><u>Other feedback:</u> ...</p>
			<p><u>Goal (Desired) Requirements</u> The complex-valued polarimetric distortion matrices with the channel imbalance and the cross-talk applied for the polarimetric calibration.</p>	
1.6.11	Mean Faraday Rotation Angle	[NRB] [POL] [ORB] [GSLC]	<p><u>Threshold (Minimum) Requirements</u> Not required.</p>	<p><u>Achieved level:</u> Threshold</p> <p><u>Explanation / Justification:</u></p> <p>Not Required</p> <p><u>Other feedback:</u> ...</p>
			<p><u>Goal (Desired) Requirements</u> The mean Faraday rotation angle estimated from the polarimetric data and/or from models with reference to the method or paper used to derive the estimate.</p>	
1.6.12	Ionosphere Indicator	[NRB] [POL] [ORB] [GSLC]	<p><u>Threshold (Minimum) Requirements</u> Not required.</p>	<p><u>Achieved level:</u> Threshold</p> <p><u>Explanation / Justification:</u></p> <p>Not Required</p> <p><u>Other feedback:</u> ...</p>
			<p><u>Goal (Desired) Requirements</u> Flag indicating whether the backscatter imagery is “significantly impacted” by the ionosphere (0 – false, 1 – true). Significant impact would imply that the ionospheric impact on the backscatter exceeds the radiometric calibration requirement or goal for the imagery.</p>	
1.7	CEOS-ARD Product Attributes		Subsection containing information related to the CEOS-ARD product generation procedure and geographic parameters.	

#	Parameter	CEOS-ARD product	Requirements	Self-Assessment
1.7.1	Product Data Access	[NRB] [POL] [ORB] [GSLC]	<p><u>Threshold (Minimum) Requirements</u> Processing parameters details of the CEOS-ARD product:</p> <ul style="list-style-type: none"> - Processing facility - Processing date - Software version - Location from where CEOS-ARD product can be retrieved, expressed as a URL or DOI. <p><u>Goal (Desired) Requirements</u> The metadata identifies an online location from where the data can be consistently and reliably retrieved by a computer algorithm without any manual intervention being required.</p>	<p><u>Achieved level:</u> Threshold</p> <p><u>Explanation / Justification:</u></p> <p>institution = "NASA JPL" processingDateTime = "2023-10-09T14:27:52.974847" softwareVersion = "1.0.1" dataAccess = "https://search.asf.alaska.edu/#/?dataset=OPERA-S1&productTypes=RTC"</p> <p><u>Other feedback:</u> ...</p>
1.7.2	Auxiliary Data	[NRB] [POL] [ORB] [GSLC]	<p><u>Threshold (Minimum) Requirements</u> Not required.</p> <p><u>Goal (Desired) Requirements</u> The metadata identifies the sources of auxiliary data used in the generation process, ideally expressed as DOIs.</p> <p><i>Note: Auxiliary data includes DEMs, etc., and any additional data sources used in the generation of the product.</i></p>	<p><u>Achieved level:</u> Threshold</p> <p><u>Explanation / Justification:</u></p> <p>Not Required</p> <p><u>Other feedback:</u> ...</p>
1.7.3	Product Sample Spacing	[NRB] [POL] [ORB] [GSLC]	<p><u>Threshold (Minimum) Requirements</u> CEOS-ARD product processing parameters details:</p> <ul style="list-style-type: none"> - Pixel (column) spacing - Line (row) spacing 	<p><u>Achieved level:</u> Threshold</p> <p><u>Explanation / Justification:</u></p> <p>xCoordinateSpacing = 30</p>

#	Parameter	CEOS-ARD product	Requirements	Self-Assessment
			<u>Goal (Desired) Requirements</u> As threshold.	yCoordinateSpacing = -30 <u>Other feedback: ...</u>
1.7.4	Product Equivalent Number of Looks	[NRB] [POL] [ORB]	<u>Threshold (Minimum) Requirements</u> Not required.	<u>Achieved level:</u> Threshold <u>Explanation / Justification:</u> Not Required <u>Other feedback: ...</u>
			<u>Goal (Desired) Requirements</u> Equivalent Number of Looks (ENL)	
1.7.5	Product Resolution	[NRB] [POL] [ORB] [GSLC]	<u>Threshold (Minimum) Requirements</u> Not required.	<u>Achieved level:</u> Threshold <u>Explanation / Justification:</u> Not Required <u>Other feedback: ...</u>
			<u>Goal (Desired) Requirements</u> Average spatial resolution of the CEOS-ARD product along: <ul style="list-style-type: none"> - Columns - Rows 	
1.7.6	Product Filtering	[NRB] [POL] [ORB]	<u>Threshold (Minimum) Requirements</u> Flag if speckle filter has been applied [true/false]. Metadata should include: <ul style="list-style-type: none"> - Reference to algorithm as DOI or URL - Input filtering parameters <ul style="list-style-type: none"> o Type o Window size in pixel units o Any other parameters defining the speckle filter used Mandatory for [POL]: Advanced polarimetric filter preserving covariance matrix properties should be applied.	<u>Achieved level:</u> Threshold <u>Explanation / Justification:</u> filteringApplied = false <u>Other feedback: ...</u>

#	Parameter	CEOS-ARD product	Requirements	Self-Assessment
			<u>Goal (Desired) Requirements</u> As threshold.	

#	Parameter	CEOS-ARD product	Requirements	Self-Assessment
1.7.7	Product Bounding Box	[NRB] [POL] [ORB] [GSLC]	<p><u>Threshold (Minimum) Requirements</u> Two opposite corners of the product file (bounding box, including any zero-fill values) are identified, expressed in the coordinate reference system defined in 1.7.11.</p> <p>Four corners of the product file are recommended for scenes crossing the Antemeridian, or the North or the South Pole.</p>	<p><u>Achieved level:</u> Threshold</p> <p><u>Explanation / Justification:</u></p> <p>boundingBox = 370140, 5061600, 469500, 5108700</p> <p><u>Other feedback:</u> ...</p>
			<p><u>Goal (Desired) Requirements</u> As threshold.</p>	
1.7.8	Product Geographical Extent	[NRB] [POL] [ORB]	<p><u>Threshold (Minimum) Requirements</u> The geometry of the SAR image footprint expressed in WGS84, in a standardised format (e.g., WKT Polygon).</p>	<p><u>Achieved level:</u> Threshold</p>

		[GSLC]	<p><u>Goal (Desired) Requirements</u> As threshold.</p>	<p><u>Explanation / Justification:</u></p> <pre> boundingPolygon = "POLYGON ((-76.55485553917953 45.74063060914809, - 76.49537497589922 45.74873200533597, - 76.43544828411001 45.75685970086086, - 76.37796808315656 45.76462547306998, - 76.31965908258196 45.77247037937519, - 76.26249653075536 45.78013063325719, - 76.20550868538898 45.78773670391862, - 76.14941495802276 45.79519410935692, - 76.09362335863473 45.80258199202877, - 76.0394857016436 45.80972413161087, - 75.98522257124735 45.81685482713208, - 75.93065011887468 45.82399774202978, - 75.87345608908285 45.83145106173516, - 75.81993596436736 45.83840084934592, - 75.76652015255573 45.84531017599898, - 75.71426893056322 45.85204389019038, - 75.66214916953464 45.85873508757528, - 75.60975051425174 45.86543596384318, - 75.55636307254063 </pre>
--	--	--------	--	---

				45.87223564876741, - 75.50461685913601 45.87880224003079, - 75.45282280252157 45.88534926864657, - 75.49666758402033 46.05066795590792, - 75.54796316958462 46.04420072917706, - 75.60055083409729 46.03754586169104, - 75.65277628640337 46.03091059737488, - 75.70566735485767 46.02416525629162, - 75.75884567161565 46.01735693319529, - 75.8120822589894 46.01051444621736, - 75.866448702324 46.00350018349664, - 75.92093601413588 45.99644238908459, - 75.97528408741208 45.9893745105098, - 76.0300214027111 45.98222811831616, - 76.08479476383023 45.97504863070205, - 76.14034443076127 45.96773906002456, - 76.19565364089905 45.96043183361986, - 76.25198720762945 45.95296036307637, - 76.30885719749422 45.94538765593207, - 76.36593628140706 45.93775638791998, - 76.423128835367
--	--	--	--	---

#	Parameter	CEOS-ARD product	Requirements	Self-Assessment
				45.93007897981063, - 76.48146089205525 45.92221754123911, - 76.5405948701911 45.91421564146805, - 76.60034757943464 45.90609669290628, - 76.55485553917953 45.74063060914809))" ; <u>Other feedback:</u> ...
1.7.9	Product Image Size	[NRB] [POL] [ORB] [GSLC]	<u>Threshold (Minimum) Requirements</u> Image attributes of the CEOS-ARD product: <ul style="list-style-type: none"> - Number of lines - Number of pixels/lines - File header size (if applicable) - Number of no-data border pixels (if appl.) 	<u>Achieved level:</u> Threshold <u>Explanation / Justification:</u> xCoordinates = 3312 yCoordinates = 1570
			<u>Goal (Desired) Requirements</u> As threshold.	<u>Other feedback:</u> ...
1.7.10	Product Pixel Coordinate Convention	[NRB] [POL] [ORB] [GSLC]	<u>Threshold (Minimum) Requirements</u> Coordinate referring to the Centre, or the Upper Left Corner or the Lower Left Corner of a pixel. Values are [pixel centre, pixel ULC or pixel LLC].	<u>Achieved level:</u> Threshold <u>Explanation / Justification:</u> pixel_coordinate_convention = "Edges/corners. Xmin, Ymin, Xmax, Ymax."
			<u>Goal (Desired) Requirements</u> As threshold.	<u>Other feedback:</u> ...

#	Parameter	CEOS-ARD product	Requirements	Self-Assessment
1.7.11	Product Coordinate Reference System	[NRB] [POL] [ORB] [GSLC]	<p><u>Threshold (Minimum) Requirements</u> The metadata lists the map projection (or geographical coordinates, if applicable) that was used and any relevant parameters required to geolocate data in that map projection, expressed in a standardised format (e.g., WKT). Indicate EPSG code, if defined for the CRS.</p> <p><u>Goal (Desired) Requirements</u> As threshold.</p>	<p><u>Achieved level:</u> Threshold</p> <p><u>Explanation / Justification:</u> epsg = "32618"</p> <p><u>Other feedback:</u> ...</p>
1.7.12	Look Direction Polynomials	[ORB]	<p><u>Threshold (Minimum) Requirements</u> In case the per-pixel item 2.11 (Look Direction Image) is not provided, then a list of the polynomial coefficients a_i necessary to reconstruct the look direction angle*, together with an estimate of the added error from use of polynomial vs. per-pixel more accurate values, shall be provided. Example polynomial: $LookDir = a_1Lat^2 + a_2Lon^2 + a_3LatLon + a_4Lat + a_5Lon + a_6$ where: a_i = polynomial coefficients Lat = latitude Lon = longitude Lat and Lon are the related coordinates in the product map units ['m', 'deg', 'arcsec']</p> <p><i>* The look direction angle represents the planar angle between north and each range direction. It is not constant in range, especially close to the poles.</i></p> <p><u>Goal (Desired) Requirements</u> As threshold.</p>	<p><u>Achieved level:</u> Threshold</p> <p><u>Explanation / Justification:</u> Not Required</p> <p><u>Other feedback:</u> ...</p>

#	Parameter	CEOS-ARD product	Requirements	Self-Assessment
1.7.13	Radar Unit Look Vector	[GSLC]	<p><u>Threshold (Minimum) Requirements</u> 3-D components radar unit look vector, specified at centre of scene, in an Earth-Centred Earth-Fixed (ECEF) coordinate system (also called Earth Centred Rotating - ECR) is provided. It consists of unit vectors from antenna to surface pixel (i.e., positive Z component).</p> <p>Only required if per-pixel metadata 2.12 (Radar Unit Look Vector Grid Image) is not provided.</p>	<p><u>Achieved level:</u> Threshold</p> <p><u>Explanation / Justification:</u></p> <p>Not Required</p> <p><u>Other feedback:</u> ...</p>
			<p><u>Goal (Desired) Requirements</u> As threshold.</p>	
1.7.14	Slant Range Sensor to Surface	[GSLC]	<p><u>Threshold (Minimum) Requirements</u> Slant range distance from the sensor to the surface, specified at centre of scene. Only required if per-pixel metadata 2.13 (Slant Range Sensor to Surface Image) is not provided.</p>	<p><u>Achieved level:</u> Threshold</p> <p><u>Explanation / Justification:</u></p> <p>Not Required</p> <p><u>Other feedback:</u> ...</p>
			<p><u>Goal (Desired) Requirements</u> As threshold.</p>	
1.7.15	Reference Orbit	[NRB] [POL]	<p><u>Threshold (Minimum) Requirements</u> Not required.</p>	<p><u>Achieved level:</u> Threshold</p>

#	Parameter	CEOS-ARD product	Requirements	Self-Assessment
		[GSLC]	<p>Goal (Desired) Requirements</p> <p>Usage: For [NRB] & [POL] only when per-pixel metadata 3.7 (Flattened phase) is provided. For [GSLC] when a reference orbit is used instead of a virtual orbit (see Annex A 1.2).</p> <p>Provide the absolute orbit number used as reference for topographic phase flattening. In case a virtual orbit has been used, provide orbit parameters or orbit state vectors as DOI or URL.</p> <p>Provide scene-centred perpendicular baseline for the for the source data relative to the reference orbit used (for approximate use only).</p>	<p><u>Explanation / Justification:</u></p> <p>Not Required</p> <p><u>Other feedback: ...</u></p>

Per-Pixel Metadata

The following minimum metadata specifications apply to each pixel. Whether the metadata are provided in a single record relevant to all pixels or separately for each pixel is at the discretion of the data provider. Per-pixel metadata should allow users to discriminate between (choose) observations on the basis of their individual suitability for applications. Cloud optimized file formats are recommended.

The column “CEOS-ARD product” indicates which CEOS-ARD SAR product(s) (NRB, POL, ORB, GSLC) the parameter refers to.

#	Parameter	CEOS-ARD product	Requirements	Self-Assessment
2.1	Metadata Machine Readability	[NRB] [POL] [ORB] [GSLC]	<u>Threshold (Minimum) Requirements</u> Metadata is provided in a structure that enables a computer algorithm to be used to consistently and automatically identify and extract each component/variable/layer for further use.	<u>Achieved level:</u> Threshold <u>Explanation / Justification:</u> Metadata is stored in HDF file
			<u>Goal (Desired) Requirements</u> As threshold, but metadata is formatted in accordance with CEOS-ARD SAR Metadata Specifications, v.1.0.	<u>Other feedback:</u> ...
2.2	Data Mask Image	[NRB] [POL] [ORB] [GSLC]	<u>Threshold (Minimum) Requirements</u> Mask image indicating: <ul style="list-style-type: none"> - Valid data - Invalid data - No data File format specifications/ contents provided in metadata: <ul style="list-style-type: none"> - Sample Type [Mask] - Data Format [Raw/GeoTIFF/NetCDF, ...] - Data Type [Int, ...] - Bits per Sample - Byte Order - Bit Value Representation 	<u>Achieved level:</u> Threshold <u>Explanation / Justification:</u> In geoTiff: LAYER_DESCRIPTION=Mask Layer. Values: 0: not masked; 1: shadow; 2: layover; 3: layover and shadow; 255: invalid/fill value <u>Other feedback:</u> ...

#	Parameter	CEOS-ARD product	Requirements	Self-Assessment
			<p>Goal (Desired) Requirements</p> <p>As threshold, including additional bit value representations, e.g.:</p> <ul style="list-style-type: none"> - Layover (masked as invalid data in threshold) - Radar shadow (masked as invalid data in threshold) - Ocean water - Land (recommended for [ORB]) - RTC applied (e.g., for maritime scenes with land samples for which RTC has been applied) - DEM gap filling (i.e., interpolated DEM over gaps) 	
2.3	Scattering Area Image	[NRB] [POL] [ORB] [GSLC]	<p>Threshold (Minimum) Requirements</p> <p>Not required.</p> <p>Goal (Desired) Requirements</p> <p>Usage: Recommended for scenes that include land areas.</p> <p>DEM-based scattering area image used for Gamma-Nought terrain normalisation is provided. This quantifies the local scattering area used to normalise for radiometric distortions induced by terrain to the measured β^0 backscatter. The terrain-flattened γ_T^0 is best understood as β^0 divided by the local scattering area.</p> <p>File format specifications/ contents provided in metadata:</p> <ul style="list-style-type: none"> - Sample Type [Scattering Area] - Data Format [Raw/GeoTIFF/NetCDF, ...] - Data Type [Int/Float, ...] - Bits per Sample - Byte Order 	<p><u>Achieved level:</u> Threshold</p> <p><u>Explanation / Justification:</u></p> <p>Not Required</p> <p><u>Other feedback:</u> ...</p>

#	Parameter	CEOS-ARD product	Requirements	Self-Assessment
2.4	Local Incident Angle Image	[NRB] [POL] [ORB] [GSLC]	<p><u>Threshold (Minimum) Requirements</u> DEM-based Local Incident angle image is provided.</p> <p>File format specifications/ contents provided in metadata:</p> <ul style="list-style-type: none"> - Sample Type [Angle] - Data Format [Raw/GeoTIFF/NetCDF, ...] - Data Type [Int/Float, ...] - Bits per Sample - Byte Order <p><i>Note: For maritime [ORB] scenes when no land areas are covered, a geoid model could be used for the calculation of the local incident angle</i></p>	<p><u>Achieved level:</u> Threshold</p> <p><u>Explanation / Justification:</u></p> <p>Description = Incidence Angle</p> <p>Data Format: geoTIFF</p> <p>Type=Float32</p> <p>Bits per sample: 32</p> <p>Byte Order: in geoTIFF header</p> <p><u>Other feedback:</u> ...</p>
			<p><u>Goal (Desired) Requirements</u> As threshold.</p>	
2.5	Ellipsoidal Incident	[NRB] [POL]	<p><u>Threshold (Minimum) Requirements</u> Not required.</p>	<p><u>Achieved level:</u> Threshold</p>

#	Parameter	CEOS-ARD product	Requirements	Self-Assessment
	Angle Image	[ORB] [GSLC]	<p><u>Goal (Desired) Requirements</u> Ellipsoidal incident angle is provided.</p> <p>File format specifications/ contents provided in metadata:</p> <ul style="list-style-type: none"> - Sample Type [Angle] - Data Format [Raw/GeoTIFF/NetCDF, ...] - Data Type [Int/Float, ...] - Bits per Sample - Byte Order - Reference Ellipsoid Name <p><i>Note: For maritime [ORB] scenes when no land areas are covered, the ellipsoidal incident angle is nearly identical to the geoid based local incident angle.</i></p>	<p><u>Explanation / Justification:</u></p> <p>Not Required</p> <p><u>Other feedback: ...</u></p>

#	Parameter	CEOS-ARD product	Requirements	Self-Assessment
2.6	Noise Power Image	[NRB] [POL] [ORB] [GSLC]	<p>Threshold (Minimum) Requirements Not required.</p>	<p><u>Achieved level:</u> Threshold</p> <p><u>Explanation / Justification:</u></p> <p>Not Required</p> <p><u>Other feedback:</u> ...</p>
			<p>Goal (Desired) Requirements Estimated Noise Equivalent σ^0 (or β^0 or γ^0, as applicable) used for noise removal, if applied, for each channel. $NE\sigma^0$ and $NE\gamma^0$ are both based on a simplified ellipsoid Earth model.</p> <p>File format specifications/ contents provided in metadata:</p> <ul style="list-style-type: none"> - Sample Type [Gamma-Nought, Sigma-Nought, Beta-Nought] - Data Format [Raw/GeoTIFF/NetCDF, ...] - Data Type [Int/Float, ...] - Bits per Sample - Byte Order 	
2.7	Gamma-to-Sigma Ratio Image	[NRB] [POL] [GSLC]	<p>Threshold (Minimum) Requirements Not required.</p>	<p><u>Achieved level:</u> Threshold</p> <p><u>Explanation / Justification:</u></p> <p>Not Required</p> <p><u>Other feedback:</u> ...</p>
			<p>Goal (Desired) Requirements Ratio of the integrated area in the Gamma projection over the integrated area in the Sigma projection (ground). Multiplying RTC γ_T^0 by this ratio results in an estimate of RTC σ_T^0.</p> <p>File format specifications/ contents provided in metadata:</p> <ul style="list-style-type: none"> - Sample Type [Ratio] - Data Format [Raw/GeoTIFF/NetCDF, ...] - Data Type [Int/Float, ...] - Bits per Sample - Byte Order 	

#	Parameter	CEOS-ARD product	Requirements	Self-Assessment
2.8	Acquisition ID Image	[NRB] [POL] [ORB] [GSLC]	<p><u>Threshold (Minimum) Requirements</u> Note: Required for multi-source product only.</p> <p>Acquisition ID, or acquisition date, for each pixel is identified.</p> <p>In case of multi-temporal image stacks, use source acquisition ID (i.e., 1.6 acqID values) to list contributing images.</p> <p>In case of Date, data represent (integer or fractional) day offset to reference observation date [UTC]. Date used as reference (“Day 0”) is provided in the metadata.</p> <p>Pixels not representing a unique date (e.g., pixels averaged in image overlap zones) are flagged with a pre-set pixel value that is provided in the metadata.</p> <p>File format specifications/ contents provided in metadata:</p> <ul style="list-style-type: none"> - Sample Type [Day, Time, ID] - Data Format [Raw/GeoTIFF/NetCDF, ...] - Data Type [Int/Float, ...] - Bits per sample - Byte Order <p><u>Goal (Desired) Requirements</u></p> <p>In case of image composites, the sources for each pixel are uniquely identified.</p>	<p><u>Achieved level:</u> Threshold</p> <p><u>Explanation / Justification:</u></p> <p>Not Required</p> <p><u>Other feedback:</u> ...</p>

#	Parameter	CEOS-ARD product	Requirements	Self-Assessment
2.9	Per-pixel DEM	[NRB] [POL] [GSLC]	<u>Threshold (Minimum) Requirements</u> Not required.	<u>Achieved level:</u> Threshold <u>Explanation / Justification:</u>
			<u>Goal (Desired) Requirements</u> Provide DEM or DSM as used during the geometric and radiometric processing of the SAR data, resampled to an exact geometric match in extent and resolution with the CEOS-ARD SAR image product. Can also be provided with [ORB] products containing land areas. File format specifications/ contents provided in metadata: <ul style="list-style-type: none"> - Sample Type [Height] - Data Format [Raw/GeoTIFF/NetCDF, ...] - Data Type [Int/Float, ...] - Bits per Sample - Byte Order 	Not Required <u>Other feedback:</u> ...
2.10	Per-pixel Geoid	[ORB]	<u>Threshold (Minimum) Requirements</u> Not required.	<u>Achieved level:</u> Threshold <u>Explanation / Justification:</u>
			<u>Goal (Desired) Requirements</u> Provide Geoid as used during the geometric and radiometric processing of the SAR data, resampled to an exact geometric match in extent and resolution with the CEOS-ARD ORB image product. File format specifications/ contents provided in metadata: <ul style="list-style-type: none"> - Sample Type [Height] - Data Format [Raw/GeoTIFF/NetCDF, ...] - Data Type [Int/Float, ...] - Bits per Sample - Byte Order - Ground Sampling Distance 	Not Required <u>Other feedback:</u> ...

#	Parameter	CEOS-ARD product	Requirements	Self-Assessment
2.11	Look Direction Image	[ORB]	<u>Threshold (Minimum) Requirements</u> Not required.	<u>Achieved level:</u> Threshold <u>Explanation / Justification:</u> Not Required <u>Other feedback:</u> ...
			<u>Goal (Desired) Requirements</u> Look Direction Image is provided. It represents the planar angle between north and each range direction. File format specifications/ contents provided in metadata: <ul style="list-style-type: none"> - Sample Type [Angle] - Data Format [Raw/GeoTIFF/NetCDF, ...] - Data Type [Int/Float, ...] - Bits per Sample - Byte Order 	
2.12	Radar Unit Look Vector Grid Image	[GSLC]	<u>Threshold (Minimum) Requirements</u> Not required.	<u>Achieved level:</u> Threshold <u>Explanation / Justification:</u> Not Required <u>Other feedback:</u> ...
			<u>Goal (Desired) Requirements</u> 3-D components radar unit look vector, specified at each pixel in an Earth-Centred Earth-Fixed (ECEF) coordinate system (also called Earth Centred Rotating – ECR) is provided. It consists of unit vectors from the antenna to the surface pixel (i.e., positive Z component). File format specifications/ contents provided in metadata: <ul style="list-style-type: none"> - Sample Type [3D unit vector] - Data Format [Raw/GeoTIFF/NetCDF, ...] - Data Type [Float, ...] - Bits per Sample - Byte Order 	

#	Parameter	CEOS-ARD product	Requirements	Self-Assessment
2.13	Slant Range Sensor to Surface Image	[GSLC]	<u>Threshold (Minimum) Requirements</u> Not required.	<u>Achieved level:</u> Threshold <u>Explanation / Justification:</u> Not Required <u>Other feedback:</u> ...
			<u>Goal (Desired) Requirements</u> Slant range distance from the sensor to the surface, specified at each pixel in an Earth-Centred Earth-Fixed (ECEF) coordinate system (also called Earth Centred Rotating – ECR) is provided. File format specifications/ contents provided in metadata: <ul style="list-style-type: none"> - Sample Type [Distance] - Data Format [Raw/GeoTIFF/NetCDF, ...] - Data Type [Float, ...] - Bits per Sample - Byte Order 	
2.14	InSAR Phase Uncertainty Image	[GSLC]	<u>Threshold (Minimum) Requirements</u> Not required.	<u>Achieved level:</u> Threshold <u>Explanation / Justification:</u> Not Required <u>Other feedback:</u> ...
			<u>Goal (Desired) Requirements</u> Estimate of uncertainty in InSAR phase is provided, such as finite signal to noise ratio, quantization noise, or DEM error. Identification of which error sources are included will be provided as DOI/URL reference or brief description. It represents statistical variation from known noise sources only. File format specifications/ contents provided in metadata: <ul style="list-style-type: none"> - Sample Type [Angle] - Data Format [Raw/GeoTIFF/NetCDF, ...] - Data Type [Float, ...] - Bits per Sample - Byte Order 	

#	Parameter	CEOS-ARD product	Requirements	Self-Assessment
2.15	Atmospheric Phase Correction Image	[GSLC]	<u>Threshold (Minimum) Requirements</u> Not required.	<u>Achieved level:</u> Threshold <u>Explanation / Justification:</u> Not Required <u>Other feedback:</u> ...
			<u>Goal (Desired) Requirements</u> Phase correction value at each pixel, if applied. DOI/URL reference to algorithm or brief description is provided. File format specifications/ contents provided in metadata: <ul style="list-style-type: none"> - Sample Type [Angle] - Data Format [Raw/GeoTIFF/NetCDF, ...] - Data Type [Float, ...] - Bits per Sample - Byte Order 	
2.16	Ionospheric Phase Correction Image	[GSLC]	<u>Threshold (Minimum) Requirements</u> Not required.	<u>Achieved level:</u> Threshold <u>Explanation / Justification:</u> Not Required <u>Other feedback:</u> ...
			<u>Goal (Desired) Requirements</u> Phase correction value at each pixel, if applied. DOI/URL reference to algorithm or brief description is provided. File format specifications/ contents provided in metadata: <ul style="list-style-type: none"> - Sample Type [Angle] - Data Format [Raw/GeoTIFF/NetCDF, ...] - Data Type [Float, ...] - Bits per Sample - Byte Order 	

Radiometrically Corrected Measurements

The requirements indicate the necessary outcomes and, to some degree, the minimum steps necessary to be deemed to have achieved those outcomes. Radiometric corrections must lead to normalised measurement(s) of backscatter intensity and/or decomposed polarimetric parameters. As for the per-pixel metadata, information regarding data format specification needs to be provided for each record. The requirements below must be met for all pixels/samples/observations in a collection. Cloud optimized file formats are recommended.

The column “CEOS-ARD product” indicates which CEOS-ARD SAR product (NRB, POL, ORB, GSLC) the parameter refers to.

#	Parameter	CEOS-ARD product	Requirements	Self-Assessment
3.1	Backscatter Measurements	[NRB]	<p><u>Threshold (Minimum) Requirements [NRB]</u></p> <p>“Terrain-flattened” Radiometrically Terrain Corrected (RTC) Gamma-Nought backscatter coefficient (γ_T^0) is provided for each polarization.</p> <p>File format specifications/contents provided in metadata:</p> <ul style="list-style-type: none"> - Measurement Type [Gamma-Nought] - Backscatter Expression Convention [linear amplitude or linear power*] - Polarization [HH/HV/VV/VH] - Data Format [Raw/GeoTIFF/NetCDF, ...] - Data Type [Int/Float, ...] - Bits per Sample - Byte Order <p><i>*Note: Transformation to the logarithm decibel scale is not required or desired as this step can be completed by the user if necessary.</i></p>	<p><u>Achieved level:</u> Threshold</p> <p><u>Explanation / Justification:</u></p> <p>outputBackscatterNormalizationConvention = "gamma0" ;</p> <p>outputBackscatterExpressionConvention = "linear backscatter intensity" ;</p> <p>Polarization: contained in file name</p> <p>Data Format: geoTIFF file</p> <p><u>Other feedback:</u> ...</p>
			<p><u>Goal (Desired) Requirements</u></p> <p>As threshold.</p>	

<p>3.1</p>	<p>Backscatter Measurements</p>	<p>[POL]</p>	<p><u>Threshold (Minimum) Requirements [POL]</u> Measurements can be:</p> <p><u>Normalised Radar Covariance Matrix (CovMat)</u> Diagonal (equivalent to [NRB]) and upper diagonal elements of the terrain-flattened Gamma-Nought (γ_T^0) Covariance Matrix are provided for coherent dual (e.g., HH-HV, VV-VH, or ...) and fully polarimetric (e.g., HH- HV-VH-VV) acquisitions.</p> <p>And/or</p> <p><u>Polarimetric Radar Decomposition (PRD)</u> The individual components of the polarimetric decomposition obtained from the terrain-flattened (Gamma-Nought (γ_T^0)) covariance matrix.</p> <p>File format specifications/contents provided in metadata:</p> <ul style="list-style-type: none"> - Measurement Type [CovMat/PRD] - Measurement convention unit [linear amplitude, linear power, angle] - Individual covariance matrix element or/and Individual component of the decomposition [C3m11, C3m12, ... or H, A, alpha, or ...] - Data Format [Raw/GeoTIFF/NetCDF, ...] - Data Type [Int/ Float/Complex, etc.] - Bits per Sample - Byte Order <p><i>Note: It is recommended to keep CovMat or PRD measurement files separated. Otherwise, specify the multi-channel format order [BIP, BIL, BSQ]</i></p>	<p><u>Achieved level:</u> Threshold</p> <p><u>Explanation / Justification:</u></p> <p>Not required</p> <p><u>Other feedback:</u> ...</p>
------------	--	--------------	--	---

#	Parameter	CEOS-ARD product	Requirements	Self-Assessment
			<p><u>Goal (Desired) Requirements</u> As threshold.</p>	
3.1	Backscatter Measurements	[ORB]	<p><u>Threshold (Minimum) Requirements [ORB]</u></p> <p><u>Geoid-corrected Sigma-Nought backscatter coefficient (σ^0)</u> is provided for each polarization.</p> <p>File format specifications/contents provided in metadata:</p> <ul style="list-style-type: none"> - Measurement Type [Sigma-Nought] - Backscatter Expression Convention [linear amplitude or linear power*] - Backscatter Conversion Equation - Polarization [HH/HV/VV/VH] - Data Format [Raw/GeoTIFF/NetCDF, ...] - Data Type [Int/Float, ...] - Bits per Sample - Byte Order <p><i>*Note: Transformation to the logarithm decibel scale is not required or desired as this step can be easily completed by the user if necessary.</i></p>	<p><u>Achieved level:</u> Threshold</p> <p><u>Explanation / Justification:</u></p> <p>Not Required</p> <p><u>Other feedback:</u> ...</p>
			<p><u>Goal (Desired) Requirements</u> Radiometrically Terrain-corrected Sigma-Nought backscatter coefficient (σ_T^0) is provided for each polarization.</p>	

#	Parameter	CEOS-ARD product	Requirements	Self-Assessment
3.1	Backscatter Measurements	[GSLC]	<p><u>Threshold (Minimum) Requirements</u></p> <p><u>Radiometric and Phase Terrain-flattened Gamma-Nought backscatter coefficient (γ_T^0), in complex number format, is provided for each polarization (e.g., HH, HV, VV, VH).</u></p> <p>File format specifications/contents provided in metadata:</p> <ul style="list-style-type: none"> - Measurement Type [Gamma-Nought] - Backscatter Expression Convention [linear amplitude or linear power*] - Polarization [HH/HV/VV/VH] - Data Format [Raw/GeoTIFF/NetCDF, ...] - Data Type [Int/Float, ...] - Bits per Sample - Byte Order <p><i>*Note: Transformation to the logarithm decibel scale is not required or desired as this step can be easily completed by the user if necessary.</i></p> <p><u>Goal (Desired) Requirements</u></p> <p>As threshold.</p>	<p><u>Achieved level: Threshold</u></p> <p><u>Explanation / Justification:</u></p> <p>Not Required</p> <p><u>Other feedback: ...</u></p>

#	Parameter	CEOS-ARD product	Requirements	Self-Assessment
3.2	Scaling Conversion	[NRB] [POL] [ORB] [GSLC]	<p><u>Threshold (Minimum) Requirements</u> If applicable, indicate the equation to convert pixel linear amplitude/power to logarithmic decibel scale, including, if applicable, the associated calibration (dB offset) factor, and/or the equation used to convert compressed data (int8/int16/float16) to float32.</p>	<p><u>Achieved level:</u> Threshold</p> <p><u>Explanation / Justification:</u> <code>outputBackscatterDecibelConversionEquation = "10*log10(backscatter_linear)"</code></p>
			<p><u>Goal (Desired) Requirements</u> As threshold, but use of float32.</p>	<p><u>Other feedback:</u> ...</p>
3.3	Noise Removal	[NRB] [POL] [ORB] [GSLC]	<p><u>Threshold (Minimum) Requirements</u> Flag if noise removal* has been applied (Y/N). Metadata should include the noise removal algorithm and reference to the algorithm as URL or DOI. <i>*Note: Thermal noise removal and image border noise removal to remove overall scene noise and scene edge artefacts, respectively.</i></p>	<p><u>Achieved level:</u> Threshold</p> <p><u>Explanation / Justification:</u> <code>noiseCorrectionApplied = True</code> <code>noiseCorrectionAlgorithmReference = "Thermal Denoising of Products Generated by the S-1 IPF. ESA document. Accessed: May 29, 2023. [Online]. Available: https://sentinels.copernicus.eu/documents/247904/2142675/Thermal-Denoising-of-Products-Generated-by-Sentinel-1-IPF.pdfArt no. 5222723\001\001" ;</code></p>
			<p><u>Goal (Desired) Requirements</u> As threshold.</p>	<p><u>Other feedback:</u> ...</p>

#	Parameter	CEOS-ARD product	Requirements	Self-Assessment
3.4	Radiometric Terrain Correction Algorithm	[NRB] [POL] [GSLC]	<p><u>Threshold (Minimum) Requirements</u> Adjustments were made for terrain by modelling the local contributing scattering area using the preferred choice of a published peer-reviewed algorithm to produce radiometrically terrain corrected (RTC) γ_T^0 backscatter estimates.</p> <p>Metadata references, e.g.:</p> <ul style="list-style-type: none"> - a citable peer-reviewed algorithm - technical documentation regarding the algorithm used to generate the backscatter estimates is expressed as URLs or DOIs - the sources of auxiliary data used to make corrections <p>Goal for [GSLC] product type</p> <p><i>Note: Examples of technical documentation include an Algorithm, Theoretical Basis Document, product user guide, etc.</i></p> <hr/> <p><u>Goal (Desired) Requirements</u></p> <p>Goal for [GSLC] product type</p> <p>Require resolution of DEM better than the output product resolution when applying terrain corrections.</p>	<p><u>Achieved level:</u> Threshold</p> <p><u>Explanation / Justification:</u></p> <p>radiometricTerrainCorrection = "Area-Based SAR Radiometric Terrain Correction (RTC-AP)" ;</p> <p>radiometricTerrainCorrectionAlgorithmReference = "Gustavo H. X. Shiroma, Marco Lavallo, and Sean M. Buckley, \"An Area-Based Projection Algorithm for SAR Radiometric Terrain Correction and Geocoding,\" in IEEE Transactions on Geoscience and Remote Sensing, vol. 60, pp. 1-23, 2022, Art no. 5222723, doi: 10.1109/TGRS.2022.3147472." ;</p> <p><u>Other feedback:</u> ...</p>

#	Parameter	CEOS-ARD product	Requirements	Self-Assessment
3.5	Radiometric Accuracy	[NRB] [POL] [ORB] [GSLC]	<u>Threshold (Minimum) Requirements</u> Not required.	<u>Achieved level:</u> Threshold <u>Explanation / Justification:</u> Not required <u>Other feedback:</u> ...
			<u>Goal (Desired) Requirements</u> Uncertainty (e.g., bounds on γ^0 or σ^0) information is provided as document referenced as URL or DOI. SI traceability is achieved.	
3.6	Mean Wind-Normalised	[ORB]	<u>Threshold (Minimum) Requirements</u> Not required.	<u>Achieved level:</u> Threshold <u>Explanation / Justification:</u>

#	Parameter	CEOS-ARD product	Requirements	Self-Assessment
	Backscatter Measurements		<p><u>Goal (Desired) Requirements</u> Usage: Only for Maritime scene</p> <p>Mean wind-normalised (over ocean) backscatter coefficient is provided for each available polarization. It is calculated as the ratio between the backscatter intensity and a simulated backscatter intensity image generated using an ocean surface wind model such as, e.g., Quilfen et al. (1998) or Vachon and Dobson (2000) for VV and HH polarization respectively.</p> <p>File format specifications/contents provided in metadata:</p> <ul style="list-style-type: none"> - Measurement Type [Wind-Normalised Backscatter] Backscatter Expression Convention [intensity ratio] - Polarization [HH/HV/VV/VH] - Data Format [GeoTIFF/NetCDF, ...] - Data Type [Int/Float, ...] - Bits per Sample - Byte Order <p><i>Note: Reference wind model, wind speed and direction used for reference backscattering coefficient should be provided.</i></p>	<p>Not required</p> <p><u>Other feedback:</u> ...</p>

#	Parameter	CEOS-ARD product	Requirements	Self-Assessment
3.7	Flattened Phase	[NRB] [POL]	<p><u>Threshold (Minimum) Requirements</u> Not required.</p>	<p><u>Achieved level:</u> Threshold <u>Explanation / Justification:</u></p>
			<p><u>Goal (Desired) Requirements</u> Usage: Alternative to [GSLC] product for [NRB] and [POL] products</p> <p>The Flattened Phase is the interferometric phase for which the topographic phase contribution is removed. It is derived from the range-Doppler SLC product using a DEM and the orbital state vectors with respect to a reference orbit (see Annex A1.2). The use of the Flattened Phase with the [NRB] or [POL] intensity (3.1 Backscatter measurement) provides the [GSLC] equivalent, as follows:</p> $\text{GSLC} = \text{sqrt}(\text{NRB}) \times \exp(j \text{ FlattenPhase})$ <p>File format specifications/contents provided in metadata:</p> <ul style="list-style-type: none"> - Measurement Type [Flattened Phase] - Reference Polarization [HH/HV/VV/VH] - Data Format [GeoTIFF/NetCDF, ...] - Data Type [Int/Float, ...] - Bits per Sample - Byte Order <p>In case of polarimetric data, indicate the reference polarization.</p>	<p>Not Required</p> <p><u>Other feedback:</u> ...</p>

Geometric Corrections

Geometric corrections are steps that are taken to place the measurement accurately on the surface of the Earth (that is, to geolocate the measurement) allowing measurements taken through time to be compared. This section specifies any geometric correction requirements that must be met in order for the data to be analysis ready.

The column “CEOS-ARD product” indicates to which CEOS-ARD SAR product (NRB, POL, ORB, GSLC) the parameter refers.

#	Parameter	CEOS-ARD product	Requirements	Self-Assessment
4.1	Geometric Correction Algorithm	[NRB] [POL] [ORB] [GSLC]	<p><u>Threshold (Minimum) Requirements</u> Not required.</p>	<p><u>Achieved level:</u> Threshold</p> <p><u>Explanation / Justification:</u></p>
			<p><u>Goal (Desired) Requirements</u> Metadata references, e.g.:</p> <ul style="list-style-type: none"> - A metadata citable peer-reviewed algorithm, - Technical documentation regarding the implementation of that algorithm expressed as URLs or DOIs - The sources of auxiliary data used to make corrections. - Resampling method used for geometric processing of the source data. <p><i>Note: Examples of technical documentation can include e.g., an Algorithm Theoretical Basis Document (ATBD), a product user guide.</i></p>	<p>Not Required</p> <p><u>Other feedback:</u> ...</p>

#	Parameter	CEOS-ARD product	Requirements	Self-Assessment
4.2	Digital Elevation Model	[NRB] [POL] [ORB] [GSLC]	<p><u>Threshold (Minimum) Requirements</u> Usage: For products including land areas</p> <p>a) During ortho-rectification, the data provider shall use the same DEM that was used for the radiometric terrain flattening to ensure consistency of the data stack.</p> <p>b) Provide reference to Digital Elevation Model used for geometric terrain correction.</p> <p>c) Provide reference to Earth Gravitational Model (EGM) used for geometric correction</p> <hr/> <p><u>Goal (Desired) Requirements</u></p> <p>a) A DEM with comparable or better resolution to the resolution of the output CEOS-ARD product shall be used if available. Else, the upsampled DEM is identified.</p> <p>b) Resampling method used for preparation of the DEM.</p> <p>c) Method used for resampling the EGM.</p>	<p><u>Achieved level:</u> Threshold</p> <p><u>Explanation / Justification:</u></p> <p>demSource = "Digital Elevation Model (DEM) for the NASA OPERA project version 1.1 (v1.1) based on the Copernicus DEM 30-m and Copernicus 90-m referenced to the WGS84 ellipsoid" ;</p> <p>demEgmModel = "Earth Gravitational Model 2008 (GEM2008)" ;</p> <p><u>Other feedback:</u> ...</p>

#	Parameter	CEOS-ARD product	Requirements	Self-Assessment
4.3	Geometric Accuracy	[NRB] [POL] [ORB] [GSLC]	<p>Threshold (Minimum) Requirements</p> <p>Accurate geolocation is a prerequisite to radar processing to correct for terrain and to enable interoperability between radar sensors.</p> <p>The absolute geolocation error (ALE) for a sensor is typically assessed through analysis of Single Look Complex (SLC) imagery and measured along the slant range and azimuth directions (case A: SLC ALE). The end-to-end "ARD" ALE of the final CEOS-ARD product could be measured directly in the final image product in the chosen map projection, i.e., in the map coordinate directions: e.g., Northing and Easting (case B: ARD ALE). Providing accuracy estimates based on measurements following at least one scheme (A or B or both) meets the threshold requirement.</p> <p>Estimates of the ALE is provided as a bias and a standard deviation, with (Case A) SLC ALE expressed in slant range and azimuth, and (Case B) ARD ALE expressed in map projection dimensions.</p> <p><i>Note 1: This assessment is often made through comparison of measured corner reflector positions with their projected location in the imagery. In some cases, other mission calibration/validation results may be used.</i></p> <p><i>Note 2: The ALE is not typically assessed for every processed image, but through an ALE assessment by the data processing team characterizing all or (usually a subset) of the generated products.</i></p> <hr/> <p>Goal (Desired) Requirements</p> <p>Output product sub-sample accuracy should be less than or equal to 0.1 (slant range) pixel radial root mean square error (rRMSE).</p> <p>Provide documentation of estimates of ALE as DOI or URL.</p>	<p><u>Achieved level:</u> Threshold</p> <p><u>Explanation / Justification:</u></p> <p>An estimate of the localization error bias in the easting direction $x = -0.72$ An estimate of the localization error bias in the northing direction $y = -0.67$ An estimate of the localization error standard deviation in the easting direction" $x = 0.7$ An estimate of the localization error standard deviation in the northing direction $y = 0.62$;</p> <p><u>Other feedback:</u> ...</p>

#	Parameter	CEOS-ARD product	Requirements	Self-Assessment
4.4	Geometric Refined Accuracy	[NRB] [POL] [ORB] [GSLC]	<p>Threshold (Minimum) Requirements Not required.</p>	<p><u>Achieved level:</u> Threshold</p> <p><u>Explanation / Justification:</u></p> <p>Not Required</p> <p><u>Other feedback:</u> ...</p>
			<p>Goal (Desired) Requirements Values provided under 4.3 Geometric accuracy are provided by the SAR mission Cal/Val team.</p> <p>CEOS-ARD processing steps could include method refining the geometric accuracy, such as cross-correlation of the SAR data in slant range with a SAR scene simulated from a DSM or DEM.</p> <p>Methodology used (name and reference), quality flag, geometric standard deviation values should be provided.</p>	
4.5	Gridding Convention	[NRB] [POL] [ORB] [GSLC]	<p>Threshold (Minimum) Requirements A consistent gridding/sampling frame is used. The origin is chosen to minimise any need for subsequent resampling between multiple products (be they from the same or different providers). This is typically accomplished via a “snap to grid” in relation to the most proximate grid tile in a global system.*</p> <p><i>* If a product hierarchy of resolutions exists (or is planned), the multiple resolutions should nest within each other (e.g., 12.5m, 25m, 50m, 100m, etc.), and not be disjoint.</i></p>	<p><u>Achieved level:</u> Threshold</p> <p><u>Explanation / Justification:</u></p> <p>pixel_coordinate_convention = "Edges/corners. Xmin, Ymin, Xmax, Ymax." burstGeogridSnapX = 30 burstGeogridSnapY = 30</p>

#	Parameter	CEOS-ARD product	Requirements	Self-Assessment
			<p><u>Goal (Desired) Requirements</u></p> <p>Provide DOI or URL to gridding convention used.</p> <p>When multiple providers share a common map projection, providers are encouraged to standardise the origins of their products among each other.</p> <p>In the case of UTM/UPS coordinates, the upper left corner coordinates should be set to an integer multiple of sample intervals from a 100 km by 100 km grid tile of the Military Grid Reference System's 100k coordinates ("snap to grid").</p> <p>For products presented in geographic coordinates (latitude and longitude), the origin should be set to an integer multiple of samples in relation to the closest integer degree.</p>	<p><u>Other feedback: ...</u></p>

Summary Self-Assessment Table

			Threshold	Goal
1	CEOS-ARD product	General Metadata		
1.1	[ALL]	Traceability	Not Required	
1.2	[ALL]	Metadata Machine Readability	Acheived	
1.3	[ALL]	Product Type	Acheived	
1.4	[ALL]	Document Identifier	Acheived	
1.5	[ALL]	Data Collection Time	Acheived	
1.6		Source Data Attributes		
1.6.1	[ALL]	Source Data Access	Acheived	
1.6.2	[ALL]	Instrument	Acheived	
1.6.3	[ALL]	Source Data Acquisition Time	Acheived	
1.6.4	[ALL]	Source Data Acquisition Parameters	Acheived	
1.6.5	[ALL]	Source Data Orbit Information	Acheived	
1.6.6	[ALL]	Source Data Processing Parameters	Acheived	
1.6.7	[ALL]	Source Data Image Attributes	Acheived	
1.6.8	[ALL]	Sensor Calibration	Not Required	
1.6.9	[ALL]	Performance Indicators	Acheived	
1.6.10	[ALL]	Source Data Polarimetric Calibration Matrices	Not Required	
1.6.11	[ALL]	Mean Faraday Rotation Angle	Not Required	
1.6.12	[ALL]	Ionosphere indicator	Not Required	
1.7		CEOS-ARD Product Attributes		
1.7.1	[ALL]	Product Data Access	Acheived	
1.7.2	[ALL]	Auxiliary Data	Not Required	
1.7.3	[ALL]	Product Sample Spacing	Acheived	
1.7.4	[NRB] [POL] [ORB]	Product Equivalent Number of Looks	Not Required	
1.7.5	[ALL]	Product Resolution	Not Required	
1.7.6	[NRB] [POL] [ORB]	Product Filtering	Achieved	
1.7.7	[ALL]	Product Bounding Box	Acheived	
1.7.8	[ALL]	Product Geographical Extent	Acheived	
1.7.9	[ALL]	Product Image Size	Acheived	
1.7.10	[ALL]	Product Pixel Coordinate Convention	Acheived	
1.7.11	[ALL]	Product Coordinate Reference System	Not Required	
1.7.12	[ORB]	Look Direction Polynomials	Not Required	
1.7.13	[GSLC]	Radar Unit Look Vector	Not Required	
1.7.14	[GSLC]	Slant Range Sensor to Surface	Not Required	
1.7.15	[NRB] [POL] [GSLC]	Reference Orbit	Not Required	

			Threshold	Goal
2	CEOS-ARD product	Per-Pixel Metadata		
2.1	[ALL]	Metadata Machine Readability	Acheived	
2.2	[ALL]	Data Mask Image	Acheived	
2.3	[ALL]	Scattering Area Image	Not Required	
2.4	[ALL]	Local Incident Angle Image	Acheived	
2.5	[ALL]	Ellipsoidal Incident Angle Image	Not Required	
2.6	[ALL]	Noise Power Image	Not Required	
2.7	[NRB] [POL] [GSLC]	Gamma-to-Sigma Ratio Image	Not Required	
2.8	[ALL]	Acquisition ID Image	Not Required	
2.9	[NRB] [POL] [GSLC]	Per-pixel DEM	Not Required	
2.10	[ORB]	Per-pixel Geoid	Not Required	
2.11	[ORB]	Look Direction Image	Not Required	
2.12	[GSLC]	Radar Unit Look Vector Grid Image	Not Required	
2.13	[GSLC]	Slant Range Sensor to Surface Image	Not Required	
2.14	[GSLC]	InSAR Phase Uncertainty Image	Not Required	
2.15	[GSLC]	Atmospheric Phase Correction Image	Not Required	
2.16	[GSLC]	Ionospheric Phase Correction Image	Not Required	
			Threshold	Goal
3	CEOS-ARD product	Radiometrically Corrected Measurements		
3.1	[ALL]	Backscatter Measurements	Acheived	
3.2	[ALL]	Scaling Conversion	Acheived	
3.3	[ALL]	Noise Removal	Acheived	
3.4	[NRB] [POL] [GSLC]	Radiometric Terrain Correction Algorithms	Acheived	
3.5	[ALL]	Radiometric Accuracy	Not Required	
3.6	[ORB]	Mean Wind-Normalised Backscatter Measurements	Not Required	
3.7	[NRB] [POL]	Flattened Phase	Not Required	
			Threshold	Goal
4	CEOS-ARD product	Geometric Corrections		
4.1	[ALL]	Geometric Correction Algorithms	Acheived	
4.2	[ALL]	Digital Elevation Model	Acheived	
4.3	[ALL]	Geometric Accuracy	Acheived	
4.4	[ALL]	Geometric Refined Accuracy	Not Required	
4.5	[ALL]	Gridding Convention	Acheived	

Guidance

This section aims to provide background and specific information on the processing steps that can be used to achieve analysis ready data for a specific and well-developed Product Family Specification. This Guidance material does not replace or override the specifications.

Introduction to CEOS-ARD

What is CEOS Analysis Ready Data?

CEOS-ARD are products that have been processed to a minimum set of requirements and organized into a form that allows immediate analysis with a minimum of additional user effort. In general, these products would be resampled onto a common geometric grid (for a given product) and would provide baseline data for further interoperability both through time and with other datasets.

CEOS-ARD products are intended to be flexible and accessible products suitable for a wide range of users for a wide variety of applications, including particularly time series analysis and multi-sensor application development. They are also intended to support rapid ingestion and exploitation via high-performance computing, cloud computing and other future data architectures. They may not be suitable for all purposes and are not intended as a ‘replacement’ for other types of satellite products.

When can a product be called CEOS-ARD?

The CEOS-ARD branding is applied to a particular product once:

- that product has been assessed as meeting CEOS-ARD requirements by the agency responsible for production and distribution of the product, and
- that the assessment has been peer reviewed by the relevant CEOS team(s).

Agencies or other entities considering undertaking an assessment process should consult the CEOS-ARD [Governance Framework](#).

A product can continue to use CEOS-ARD branding as long as its generation and distribution remain consistent with the peer-reviewed assessment.

What is the difference between Threshold and Goal?

Threshold (Minimum) Requirements are the MINIMUM that is needed for the data to be analysis ready. This must be practical and accepted by the data producers.

Goal (Desired) Requirements (previously referred to as “Target”) are the ideal; where we would like to be. Some providers may already meet these.

Products that meet all threshold requirements should be immediately useful for scientific analysis or decision-making.

Products that meet goal requirements will reduce the overall product uncertainties and enhance broad-scale applications. For example, the products may enhance interoperability or provide increased accuracy through additional corrections that are not reasonable at the *threshold* level. Goal requirements anticipate continuous improvement of methods and evolution of community expectations, which are both normal and inevitable in a developing field. Over time, *goal* specifications may (and subject to due process) become accepted as Threshold requirements.

Reference Papers [CEOS-ARD for SAR]

ISO 19115-2 (2009) *Geographic information -- Metadata -- Part 2: Extensions for imagery and gridded data*, www.iso.org/standard/39229.html

Normalised Radar Backscatter [NRB]

Shiroma, G.H.X., M. Lavalle and S. M. Buckley, *An Area-Based Projection Algorithm for SAR Radiometric Terrain Correction and Geocoding*. *IEEE Transactions on Geoscience and Remote Sensing*, vol. 60, pp. 1-23, 2022, Art no. 5222723, doi: 10.1109/TGRS.2022.3147472.

Small, D. (2011) *Flattening Gamma: Radiometric Terrain Correction for SAR Imagery*, *IEEE Trans. Geosci. Remote Sens.*, vol. 49, no. 8, pp. 3081-3093. doi: 10.1109/TGRS.2011.2120616

Polarimetric Radar [POL]

Cameron, W.L., N.N. Youssef, and L.K. Leung (1996) *Simulated polarimetric signatures of primitive geometrical shapes*, *IEEE Trans. Geosci. Remote Sens.*, vol. 34, no. 3, pp. 793–803.

Cloude, S.R. and E. Pottier (1996) *A review of target decomposition theorems in radar polarimetry*, *IEEE Trans. Geosci. Remote Sens.*, vol. 34, no. 2, pp. 498–518.

Freeman, A. and S.L. Durden (1998) *A three-component scattering model for polarimetric SAR data*, *IEEE Trans. Geosci. Remote Sens.*, vol. 36, no. 3, pp. 964–973.

Gens, R., D.K. Atwood and E. Pottier (2013) *Geocoding of polarimetric processing results: Alternative processing strategies*, *Remote Sensing Letters*, vol. 4, no. 1, pp. 38-44.

Krogager, E. (1993) *Aspects of polarimetric radar imaging*, Ph.D. dissertation, Tech. Univ. Denmark, Electromagn. Inst., Lyngby, Denmark

Lee, J.-S., J.-H. Wen, T.L. Ainsworth, K.-S. Chen, and A.J. Chen (2009) *Improved Sigma Filter for Speckle Filtering of SAR Imagery* *IEEE Trans. Geosci. Remote Sens.*, vol. 47, no. 1, pp. 202-213.

Raney, R.K., J.T.S. Cahill, G.W. Patterson and D.B.J. Bussey (2012) *The m-chi decomposition of hybrid dual-polarimetric radar data with application to lunar craters* *Journal of Geophysical Research: Planets* 117(E5)

Toutin, T., H. Wang, P. Chomaz and E. Pottier (2013) *Orthorectification of Full-Polarimetric Radarsat-2 Data Using Accurate LIDAR DSM*, *IEEE Trans. Geosci. Remote Sens.*, vol. 51, no. 12, pp. 5252-5258.

Yamaguchi, Y., A. Sato, W.M. Boerner, R. Sato and H. Yamada (2011) *Four-Component Scattering Power Decomposition with Rotation of Coherency Matrix*, *IEEE Trans. Geosci. Remote Sens.*, vol. 49, no. 6, pp. 2251-2258.

Ocean Radar Backscatter [ORB]

Quilfen, Y., Chapron, B., Elfouhaily, T., Katsaros, K., and Tournadre, J. (1998) *Observation of tropical cyclones by high-resolution scatterometry*, *J. Geophys. Res.*, 103(C4), 7767–7786, doi:10.1029/97JC01911

Vachon, P.W. and F.W. Dobson (2000) *Wind Retrieval from RADARSAT SAR Images: Selection of a Suitable C-Band HH Polarization Wind Retrieval Model*, *Canadian Journal of Remote Sensing*, 26:4, 306-313, DOI: 10.1080/07038992.2000.10874781

Geocoded Single-Look Complex [GSLC]

- Zebker, H. A., S. Hensley, P. Shanker and C. Wortham (2010) *Geodetically Accurate InSAR Data Processor*, *IEEE Transactions on Geoscience and Remote Sensing*, vol. 48, no. 12, pp. 4309-4321, Dec. 2010, doi: 10.1109/TGRS.2010.2051333.
- Zebker, H. A. (2017) *User-Friendly InSAR Data Products: Fast and Simple Timeseries Processing*. *IEEE Geoscience and Remote Sensing Letters* 14(11): 2122-2126.
- Zheng, Y. and H. A. Zebker (2017) *Phase Correction of Single-Look Complex Radar Images for User-Friendly Efficient Interferogram Formation*. *IEEE Journal of Selected Topics in Applied Earth Observations and Remote Sensing* 10(6): 2694-2701.

Annex 1

A1.1: General Processing Roadmap

The radiometric interoperability of CEOS-ARD SAR products is ensured by a common processing chain during production. The recommended processing roadmap involves the following steps:

- Apply the best possible orbit parameters to give the most accurate product possible. These will have been projected to an ellipsoidal model such as WGS84. To achieve the level of geometric accuracy required for the DEM-based correction, precise orbit determination will be required.
- Apply instrument calibration to produce Beta-Nought values with high fidelity.
- Convert Single-Look-Complex (SLC) radiometric channel(s) to intensity [**NRB**], [**ORB**] and [**POL**] and in addition for [**POL**], the cross-product element(s) of the covariance as shown in Annex 2.1.
- Perform radiometric terrain correction (gamma backscatter convention terrain-flattening) on the covariance matrix by applying the local surface normalisation factor to each backscatter measurement element (Small, 2011; Shiroma et al., 2022).
- Perform polarimetric speckle filtering (optional for [**NRB**] and [**ORB**]), before geocoding, to optimally preserve the polarimetric information. Most popular polarimetric decomposition methodologies are incoherent in nature, which requires averaging the covariance matrix for stationarity. Depending on the application, a polarimetric filter that preserves local point targets and locally average extended targets may be used, e.g., Sigma Lee filter with 7x7 window and 3-point target (Lee et al., 2009). Multi-looking could be performed to meet optimal output sample spacing before the geometric correction step. No speckle filtering or multi-looking is performed for [**GSLC**] products.
- For [**GSLC**] products, the topographic phase is estimated relative to a reference orbit and removed from the SLC data (Zebker et al., 2010; Zebker, 2017) (see Annex A1.2)
- Geometric terrain correction (relative to geoid for [**ORB**]) is applied to the normalized backscatter measurement data. For [**POL**], the resampling methodology should be nearest-neighbour, bilinear or average in order to preserve integrity of the covariance matrix as other resampling functions can introduce artefacts due to the mix of intensity and complex number elements in the matrix. Geocoding to a common grid structure with specified pixel spacings for true data cube format.
- Generate CEOS format metadata to accompany product layers.
- Optionally, a SpatioTemporal Asset Catalog (STAC) file is added to the product.

Table A1.1 lists possible sequential steps and existing software tools (e.g., Gamma software (GAMMA, 2018)) and scripting tasks that can be used to form the CEOS-ARD SAR processing roadmap.

Table A1.1 SAR ARD processing roadmap and software options. RADARSAT-2 Example

Step	Implementation option
1. Orbital data refinement	Check xml date and delivered format. RADARSAT-2, pre EDOT (July 2015) replace. Post July 2015, check if 'DEF', otherwise replace. (Gamma - RSAT2_vec)
2. Apply radiometric scaling Look-Up Table (LUT) to Beta-Nought	Specification of LUT on ingest. (Gamma - par_RSAT2_SLC/SG)
3. Generate covariance matrix elements	Gamma – COV_MATRIX
4. Radiometric terrain normalisation	Gamma - geo_radcal2
5. Speckle filtering (Boxcar or Sigma Lee)	Custom scripting
6. Geometric terrain correction/Geocoding	Gamma – gc_map and geocode_back
7. Create metadata	Custom scripting

A1.2: Topographic phase removal

InSAR analysis capabilities from CEOS-ARD SAR products are enabled with [GSLC] products, which is also the case when the Flattened Phase per-pixel data (item 3.7) are included in the [NRB] or [POL] products. This is made possible since the simulated topographic phase relative to a given reference orbit has been subtracted.

From classical approach with SLC data, interferometric phase $\Delta\varphi_{1-2}$ between two SAR acquisitions is composed of a topographic phase $\Delta\varphi_{Topo_{1-2}}$, a surface displacement phase $\Delta\varphi_{Disp_{1-2}}$ and other noise terms $\Delta\varphi_{Noise_{1-2}}$ (Eq. A1.1). The topographic phase consists to the difference in geometrical path length from each of the two antenna positions to the point on the SAR image (φ_{DEM_SLC}) and is a function of their orbital baseline distance (Eq. A1.2). The surface displacement phase is related to the displacement of the surface that occurred in between the two acquisitions. The noise term is the function of the radar signal interaction with the atmosphere and the ionosphere during each acquisition and function of the system noise.

$$\Delta\varphi_{1-2} = \Delta\varphi_{Topo_{1-2}} + \Delta\varphi_{Disp_{1-2}} + \Delta\varphi_{Noise_{1-2}} \quad \text{Eq. A1.1}$$

Where

$$\Delta\varphi_{Topo_{1-2}} = \varphi_{DEM_SLC_1} - \varphi_{DEM_SLC_2} \quad \text{Eq. A1.2}$$

Since CEOS-ARD products are already geocoded, it is important to remove the wrapped simulated topographic phase φ_{SimDEM_SLC} from the data in slant range (Eq. A1.3) during their production, before the geocoding step. The key here is to simulate the topographic phase relatively to a constant reference orbit, as done in a regular InSAR processing. There are two different ways to simulate the topographic phase:

- 1- The use of a virtual circular orbit above a nonrotating planet (Zebker et al., 2010)
- 2- The use of a specific orbit cycle or a simulated orbit of the SAR mission

In both cases, the InSAR topographic phase $\Delta\varphi_{Topo_OrbRef-2}$ is simulated against the position of a virtual sensor φ_{DEM_OrbRef} lying on a reference orbit, instead of being simulated relatively to an existing reference SAR acquisition ($\varphi_{DEM_SLC_1}$). The use of a virtual circular orbit is a more robust approach since the reference orbit is defined at a fixed height above scene nadir and assuming the reference orbital height constant for all CEOS-ARD products. While with the second approach, the CEOS-ARD data producer must select a specific archived orbit cycle of the SAR mission or define a simulated one, from which the relative orbit, matching the one of the SAR acquisitions to be processed (to be converted to CEOS-ARD), is defined as the reference orbit. With this second approach, it is important to always use the same orbit cycle (or simulated orbit) for all the CEOS-ARD produced for a mission, in order to preserve the relevant compensated phase in between them. Providing absolute reference orbit number information in the metadata (item 1.7.15) allows users to validate the InSAR feasibility in between CEOS-ARD products.

$$\varphi_{Flattened_SLC_2} = \varphi_{SLC_2} - \Delta\varphi_{Topo_OrbRef-2} \quad \text{Eq. A1.3}$$

This procedure is equivalent to bring the position of the sensor platform of all the SAR acquisitions at the same orbital position (i.e., zeros baseline distance in between), which results in a Flattened phase $\varphi_{Flattened_SLC}$, independent of the local topography.

The phase subtraction could be performed by using a motion compensation approach (Zebker et al., 2010) or directly on the SLC data. Then the geometrical correction is performed on the Flattened SLC, which results in a [GSLC] product.

[GSLC] can also be saved as a [NRB] product by including the Flattened Phase per-pixel data (item 3.7) as follows:

$$NRB: \gamma_T^o = |GSLC|^2$$

$$Flattened \text{ Phase: } \varphi_{Flattened} = \arg(GSLC)$$

For [POL] product, the Flattened phase needs also to be subtracted from the complex number phase of the off-diagonal elements of the covariance matrix.

Demonstration:

From CEOS-ARD flattened SAR products, InSAR processing can be easily performed without dealing with topographic features and orbital sensor position, as for example with two [GSLC] products

$$\begin{aligned} \varphi_{Flattened_GSLC_1} &= \varphi_{SLC_1} - \Delta\varphi_{Topo_OrbRef-1} = \varphi_{SLC_1} - \varphi_{DEM_OrbRef} - \varphi_{DEM_SLC_1} \\ \varphi_{Flattened_GSLC_2} &= \varphi_{SLC_2} - \Delta\varphi_{Topo_OrbRef-2} = \varphi_{SLC_2} - \varphi_{DEM_OrbRef} - \varphi_{DEM_SLC_2} \end{aligned} \quad \text{Eq. A1.4}$$

The differential phase is

$$\Delta\varphi_{CARD_1-CARD_2} = \varphi_{Flattened_GSLC_1} - \varphi_{Flattened_GSLC_2} \quad \text{Eq. A1.5}$$

Which can be expanded using (Eq. A1.3)

$$\begin{aligned} \Delta\varphi_{CARD_1-CARD_2} &= (\varphi_{SLC_1} - \varphi_{DEM_OrbRef} - \varphi_{DEM_SLC_1}) \\ &\quad - (\varphi_{SLC_2} - \varphi_{DEM_OrbRef} - \varphi_{DEM_SLC_2}) \end{aligned} \quad \text{Eq. A1.6}$$

$$\Delta\varphi_{CARD_1-CARD_2} = (\varphi_{SLC_1} - \varphi_{SLC_2}) - (\varphi_{DEM_SLC_1} - \varphi_{DEM_SLC_2}) \quad \text{Eq. A1.7}$$

$$\Delta\varphi_{CARD_1-CARD_2} = \Delta\varphi_{SLC_1-SLC_2} - \Delta\varphi_{Topo_1-2} \quad \text{Eq. A1.8}$$

Where $\Delta\varphi_{SLC_1-SLC_2}$ can be express as Eq. A1.1, which gives

$$\Delta\varphi_{CARD_1-CARD_2} = (\Delta\varphi_{Topo_1-2} + \Delta\varphi_{Disp_1-2} + \Delta\varphi_{Noise_1-2}) - \Delta\varphi_{Topo_1-2} \quad \text{Eq. A1.9}$$

Consequently, the differential phase of two CEOS_ARD products doesn't contain a topographic phase and is already unwrapped (at least over stable areas). It is only function of the surface displacement and of the noise term. Depending on the reference DEM and the satellite orbital state vector accuracies, some residual topographic phase could be present.

Atmospheric (item 2.15) and ionospheric (item 2.16) phase corrections could be performed during the production of CEOS-ARD products, which reduces the differential phase noise in an InSAR analysis.

$$\Delta\varphi_{CARD_1-CARD_2} = \Delta\varphi_{Disp_{1-2}} + \Delta\varphi_{Noise_{1-2}}$$

**Eq.
A1.10**

Annex 2: Polarimetric Radar [POL]

A2.1: Normalised Covariance Matrices (CovMat)

In order to preserve the inter-channel polarimetric phase and thus the full information content of coherent dual-pol and fully polarimetric data, the covariance matrix is proposed as the data storage format. Covariance matrices are generated from the complex cross product of polarimetric channels, as shown in Eq. A2.1 for fully polarimetric data (C3) and in Eq. A2.2 for dual polarization data (C2). Since these matrices are complex symmetrical, only the upper diagonal elements (bold elements) need to be stored in the ARD database.

Fully polarimetric

$$C3 = \begin{bmatrix} |HH|^2 & \sqrt{2} \cdot HH \cdot HV^* & HH \cdot VV^* \\ \sqrt{2} \cdot HV \cdot HH^* & \mathbf{2 \cdot |HV|^2} & \sqrt{2} \cdot HV \cdot VV^* \\ VV \cdot HH^* & \sqrt{2} \cdot VV \cdot HV^* & |VV|^2 \end{bmatrix} \quad \begin{array}{l} \text{Eq.} \\ \text{A2.1} \end{array}$$

Where $HV = VH$, under the reciprocity assumption. $| |$ and $*$ mean respectively complex modulus and the complex conjugate.

Dual polarization

HH-HV

$$C2 = \begin{bmatrix} |HH|^2 & HH \cdot HV^* \\ HV \cdot HH^* & |HV|^2 \end{bmatrix} \quad \text{or}$$

VV-VH

$$C2 = \begin{bmatrix} |VH|^2 & VH \cdot VH^* \\ VH \cdot VH^* & |VV|^2 \end{bmatrix} \quad \text{or}$$

Eq. A2.2

CH-CV

$$C2 = \begin{bmatrix} |CH|^2 & CH \cdot CV^* \\ CV \cdot CH^* & |CV|^2 \end{bmatrix}$$

Where CH and CV refer to dual polarization transmitting a circular polarized signal. [CH, CV] can be replaced by [LH, LV] or [RH, RV] for left (L) or right (R) hand circular transmission respectively, although RCM will offer only right-hand circular transmission. The coherent HH-VV configuration available on TerraSAR-X could also be represented as C2 format.

Polarimetric decomposition methods like Yamaguchi et al. (2011) for fully polarimetric, or m-chi (Raney et al., 2012) for compact polarimetric data, can be applied directly on averaged (speckle filtered) C3 and C2 matrices respectively. These decompositions enhance scattering information, bring it to a more comprehensible level to end-users, and raise the performance of thematic classification methodologies. For SAR products that were acquired with single polarization the use of the covariance matrix does not result in superfluous storage requirements, since only the matrix elements that are populated are retained and the diagonal matrix elements are the backscatter intensities. Thus, a single channel intensity product would yield only one matrix element and the storage needs would not change.

In order to ease the data structure and the metadata in between C3 and C2, Eq. A2.1 should be redefined as Eq. A2.3. Users will have to take care of this non-standard representation when applying their polarimetric analytic tools. “< >” means that ARD matrix elements are speckle filtered. Eq. A2.3 is valid both for dual-linear and quad polarization.

$$C3 \text{ modified } C3m = \begin{bmatrix} \langle |HH|^2 \rangle & \langle HH \cdot HV^* \rangle & \langle HH \cdot VV^* \rangle \\ \langle HV \cdot HH^* \rangle & \langle |HV|^2 \rangle & \langle HV \cdot VV^* \rangle \\ \langle VV \cdot HH^* \rangle & \langle VV \cdot HV^* \rangle & \langle |VV|^2 \rangle \end{bmatrix} \quad \text{Eq. A2.3}$$

Furthermore, for compact polarimetric data, it is recommended to store them, by simple transformation, under the circular-circular basis, since RR and RL polarizations (Eq. A2.4) permit faster and more intuitive RGB visualizations (R=RR, G=RR/(RR+RL), B= RL).

$$\text{CH-CV} \quad \text{C2 circular } C2c = \begin{bmatrix} \langle |RR|^2 \rangle & \langle RR \cdot RL^* \rangle \\ \langle RL \cdot RR^* \rangle & \langle |RL|^2 \rangle \end{bmatrix} \quad \text{Eq. A2.4}$$

A2.2: Polarimetric Radar Decomposition (PRD)

Different methodologies allow decomposition of coherent dual-polarization data or fully polarimetric data to meaningful components summarizing the scattering processing with the interacting media. Decomposition techniques are divided in two categories: Coherent and incoherent.

1. Coherent decompositions express the scattering matrix by the summation of elementary objects of known signature (ex.: a sphere, a diplane, a cylinder, a helix, ...). They are used mainly to describe point targets which are coherent. As for examples, coherent PRD could be (but not limited to):

a. Pauli decomposition (3 layers)

$|\alpha|^2$: sphere (odd-bounce interaction) [Intensity]

$|\beta|^2$: 0° diplane (even-bounce interaction) [Intensity]

$|\gamma|^2$: 45° diplane (volumetric interaction) [Intensity]

b. Krogager decomposition (5 layers) (Krogager, 1993)

$|\kappa_\sigma|^2$: sphere (odd-bounce interaction) [Intensity]

$|\kappa_\delta|^2$: diplane (odd-bounce interaction) [Intensity]

$|\kappa_\eta|^2$: helix [Intensity]

θ : orientation angle [degrees]

ϕ_s : sphere to diplane angle [degrees]

c. Cameron (nine classes) – non-dimensional layers (Cameron et al., 1996)

Table A2.1

Classes	ID
Trihedral	1
Dihedral	2
Narrow Dihedral	3
Dipole	4
Cylinder	5
¼ wave	6
Right Helix	7
Left Helix	8
Asymmetrical	9

2. Incoherent decompositions describe distributed targets in terms of scattering mechanisms and their diversity. They are generated from averaged Covariance,

Coherence or Kennaugh matrices. As for examples, incoherent PRD could be (but not limited to):

- a. Based and saved on intensity of scattering mechanisms can be (Freeman and Durden, 1998; Yamaguchi et al., 2011; Raney et al., 2012)

Table A2.2

Level 2b - Layers [Intensity]	Incoherent Decompositions		
	Freeman-Durden	Yamaguchi	m-chi
Odd-bounce (surface/trihedral)	X	X	X
Even-bounce (dihedral)	X	X	X
Random (volumetric)	X	X	X
Helix		X	

- b. Based on eigenvector-eigenvalue decomposition expressing the diversity of scattering mechanisms (Cloude and Pottier, 1996) and types:

H : Entropy [] is the polarization diversity

A : Anisotropy [] is weighted difference between the 2nd and 3rd eigenvalues

α : Odd-even bounce angle [Degrees]

β : orientation angle [Degrees]

A2.3: Polarimetric Radar Decomposition Product Examples

From fully polarimetric covariance matrix ARD format [POL] (Level-2a), it is possible to apply any version of the popular Yamaguchi methodology, which decomposes the polarimetric information under relative intensities of 4 scattering types: Odd bounce, Even bounce, Random (volume) and helix. Figure A2.1b) shows HH intensity of a RADARSAT fully polarimetric acquired over a Spanish area. Decomposition using Yamaguchi methodology (Yamaguchi et al., 2011) can be expressed in RGB colour composite (Figure A2.1c) where Red channel refers to even bounce scattering like urban area; Green channel is random scattering like vegetation; and Blue channel is odd bounce scattering like bare soil. Figure A2.1d) is equivalent to c) where radiometric normalisation (terrain flattening) has been applied with the help of the DEM of the scene (Figure A2.1a).

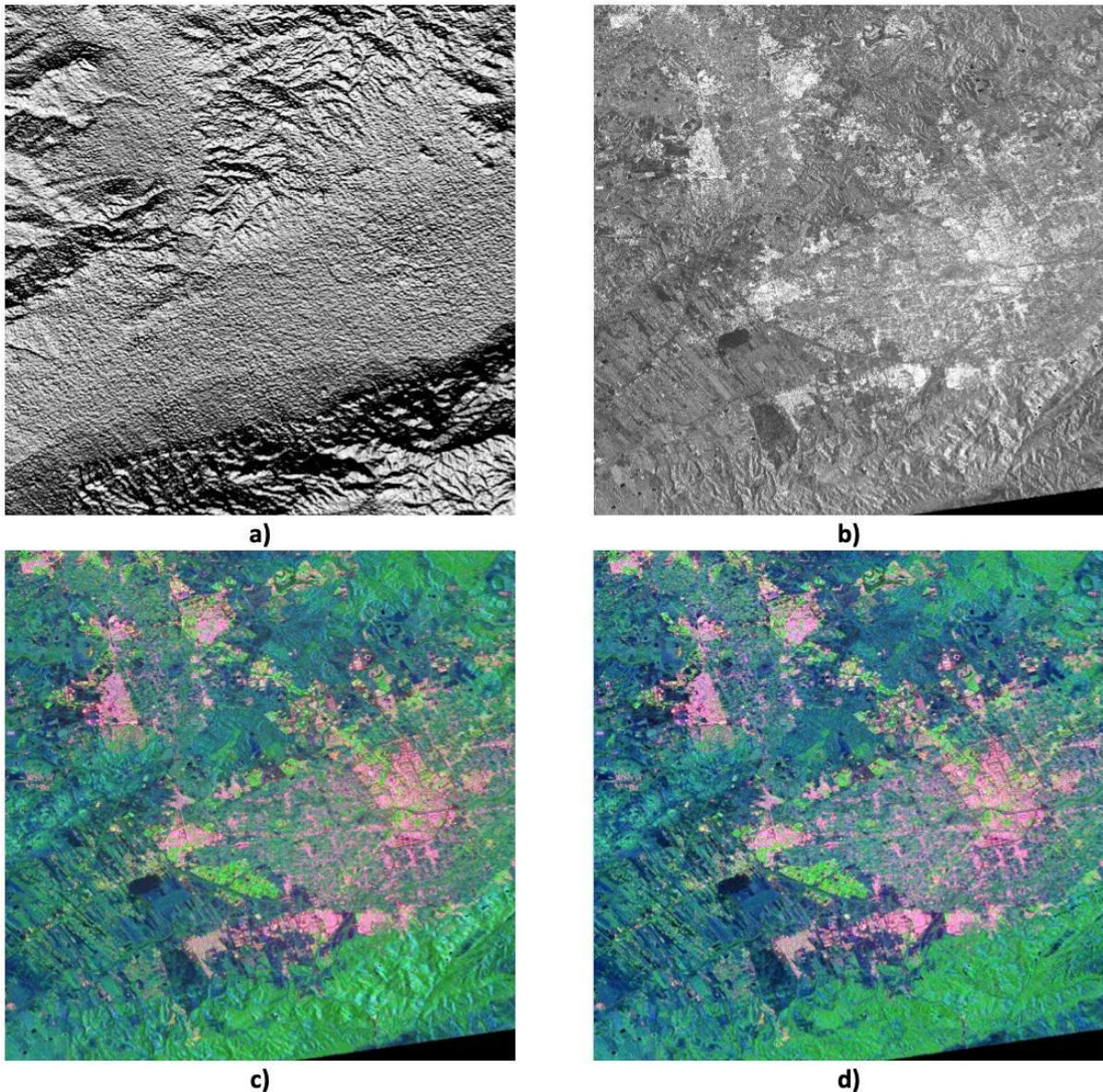


Figure A2.1 Example of polarimetric decomposition generated from ARD covariance format. **a)** Shaded DEM of the area; **b)** RADARSAT-2 HH intensity; **c)** Yamaguchi decomposition colour composite (Red: even bounce, Green: random, Blue: odd bounce); **d)** Same as c) with terrain flattening option. Generated from Radarsat-2 FQ18W acquired over Murcia, Spain on 18 June 2014 ©MDA 2014

Figure A2.2 is a [PRD] compact polarimetric m-chi decomposition (Raney et al., 2012) simulated from two Canadian prairies Radarsat-2 fully polarimetric scenes acquired in May and June 2012. In May, before the growing season (Figure A2.2a), m-chi shows mainly surface scattering from bare soil (blue channel) and vegetation interaction from forested areas (green channel), while in June (Figure A2.2b) growth of vegetation modifies the radar signal with interacting media function of the vegetation density and geometry which increase the amount of even bounce (red channel) and random scattering.

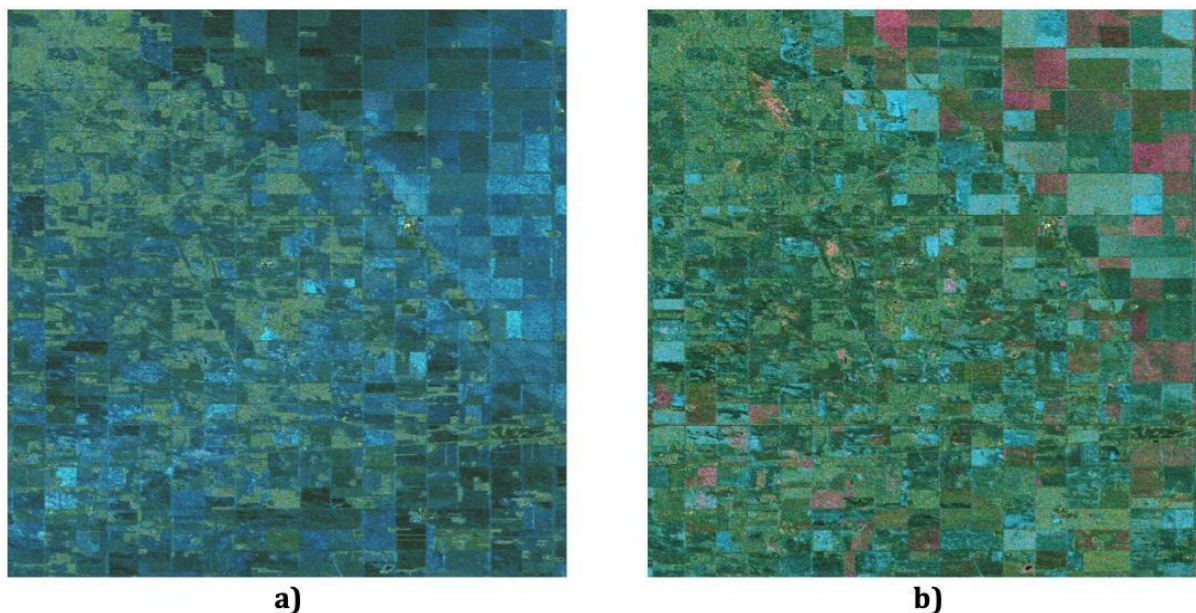


Figure A2.2. *m-chi decomposition colour composite of simulated compact polarimetry from Radarsat-2 over an agriculture area. RGB representation: Red: even bounce, Green: random, Blue: odd bounce. a) 3 May 2012; and b) 18 June 2012. Generated from Radarsat-2 FQ6W acquired over SMAPVEX12 campaign Manitoba, Canada on 3 May and 20 June 2012 ©MDA 2012*

Annex 3: Ocean Radar Backscatter [ORB] example

In contrast to [NRB] and [POL], CEOS-ARD Ocean Radar Backscatter [ORB] products are geoid corrected and are provided in the Sigma-Nought (σ_E^0) backscatter convention (Figure A3.1a), which is recommended for most ocean applications. In addition, availability of the “Local (or Ellipsoidal) Incidence Angle Image” (Figure A3.1d) and “Look Direction Image” per-pixel metadata are highly recommended (otherwise the general metadata “1.7.12 Look Direction Polynomials”) since they required for operational applications like ocean wind field estimates.

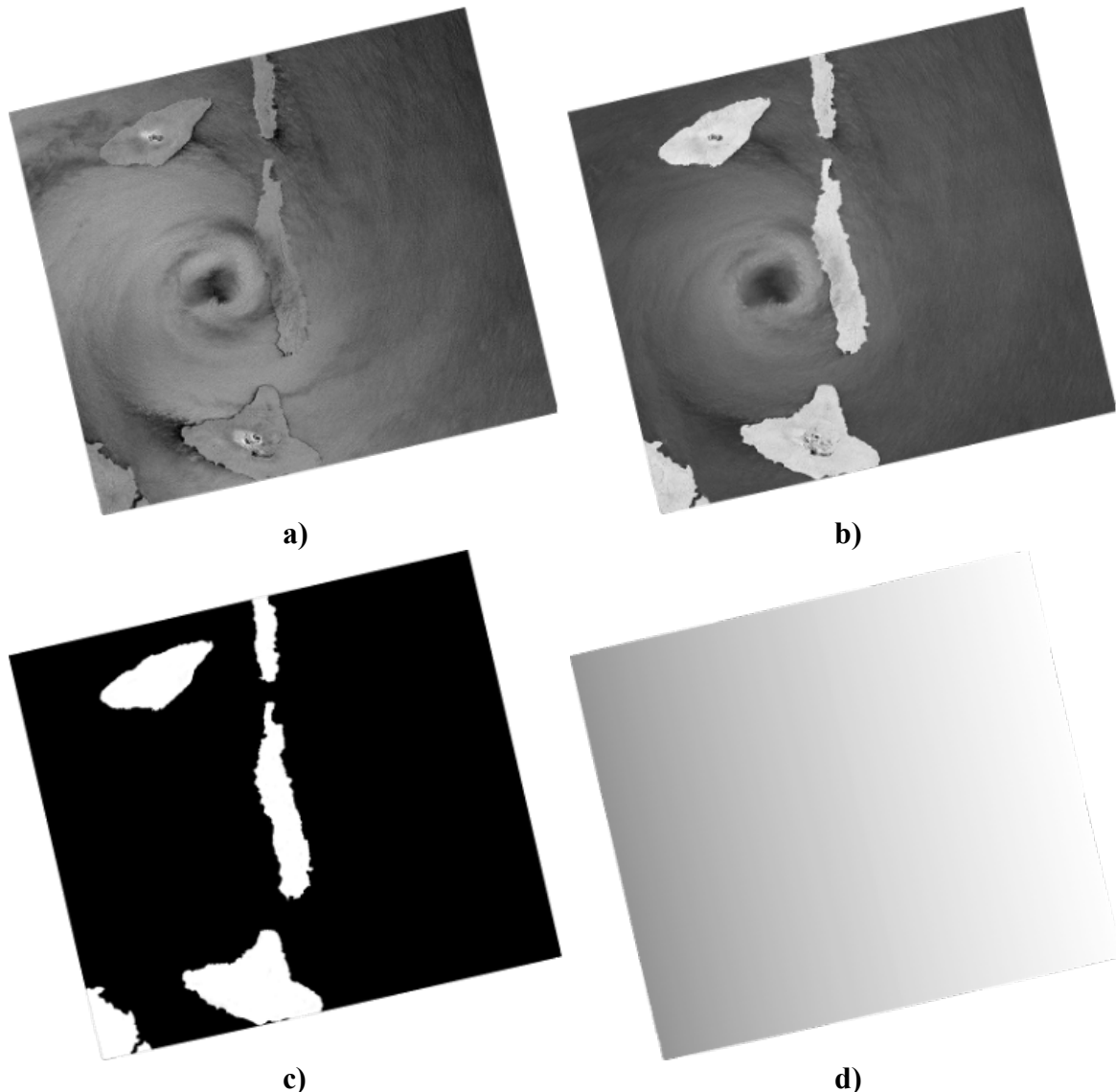
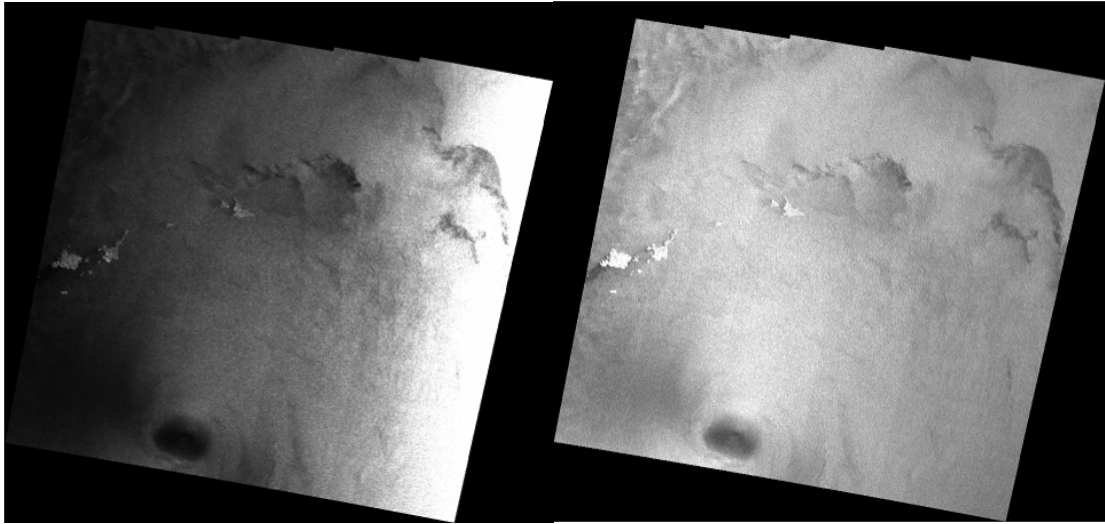


Figure A3.1 Sentinel-1 [ORB] product. Tropical Cyclone Harold passing Vanuatu on April 6, 2020. **a)** VV intensity **b)** VH intensity **c)** Data mask image **d)** Local incident angle. Processing: A. Rosenqvist (soloEO).

Another useful file is the “Mean Wind-Normalised Backscatter Measurements” (Figure A3.2b) which efficiently attenuates intensity variation along range and visually enhances oceanic features. This file is calculated as the ratio between the backscatter intensity and a simulated backscatter intensity image generated using an ocean surface wind model, like CMOD_IRF2 (Quilfen et al., 1998) for VV polarization or CMOD_IRF2K (Vachon and Dobson, 2000) for HH polarization, and the SAR local incidence angle and the look direction information.



a)

b)

Figure A3.2 Sentinel-1 EW [ORB] product. **a)** ORB intensity (Sigma-Nought); **b)** Intensity compensated with the “Mean Wind-Normalised Backscatter Measurement” (i.e., not Sigma-Nought) and geocoded. Processing: G. Hajduch (CLS).

Annex 4: Geocoded Single-Look Complex [GSLC] example

In contrast to basic [NRB] and [POL] products, CEOS-ARD Geocoded SLC [GSLC] products are kept close to the native resolution in complex data format for which local topographic InSAR phases, relative to a reference orbit (Zebker et al., 2010; Zebker 2017), have been removed. Having a volume of [GSLC] products acquired over repeat cycles, already radiometric and phase terrain corrected and geocoded (Figure A4.1a) and Figure A4.1b), allows user-friendly production of a first iteration of the InSAR coherence (Eq. A4.1 and Figure A4.1c) and differential phases (Eq. A4.2 and Figure A4.1d) in between [GSLC] pairs, simply by applying local averaging window over the product of a [GSLC] product (GSLC1) with the complex conjugate of a second [GSLC] (GSLC2) divided by their local averaged intensities. These intermediate files could be used for coherent change detection analysis and surface displacement monitoring.

$$\text{Complex coherence: } \rho = \frac{\sum[GSLC_1 * conj(GSLC_2)]}{\sqrt{\sum|GSLC_1|^2 * \sum|GSLC_2|^2}} \quad \text{Eq. A4.1}$$

The InSAR differential phase (Eq. A4.2) is the argument of the complex coherence estimated with

$$\text{InSAR differential phase: } \varphi = \arg(\rho) \quad \text{Eq. A4.2}$$

Eq. 4.1.

Some advanced [NRB] or [POL] products could include per-pixel “Flattened Phase” data (item 3.7). This “Flattened Phase” enables the possibility to perform InSAR analysis as with two [GSLC] products. As for example, from two different [NRB] products (NRB1) and (NRB2), acquired over repeat cycles (i.e., on the same relative orbit), containing γ_T^0 and their corresponding “Flattened Phase” (FPh1) and (FPh2) per-pixel data, the complex InSAR coherence (Eq. A4.3) can be estimated in the similar manner as Eq. A4.1 for [GSLC] products.

$$\text{Complex coherence: } \rho_{NRB} = \frac{\sum[(\sqrt{NRB_1} \cdot e^{i \cdot FPh1}) \cdot conj(\sqrt{NRB_2} \cdot e^{i \cdot FPh2})]}{\sqrt{\sum NRB_1 * \sum NRB_2}} \quad \text{Eq. A4.3}$$

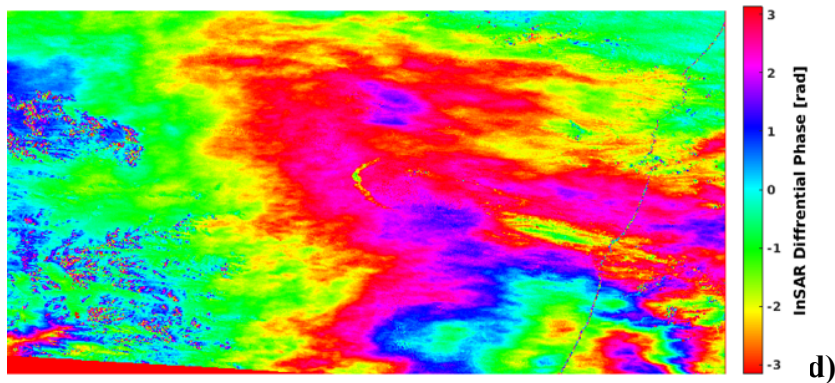
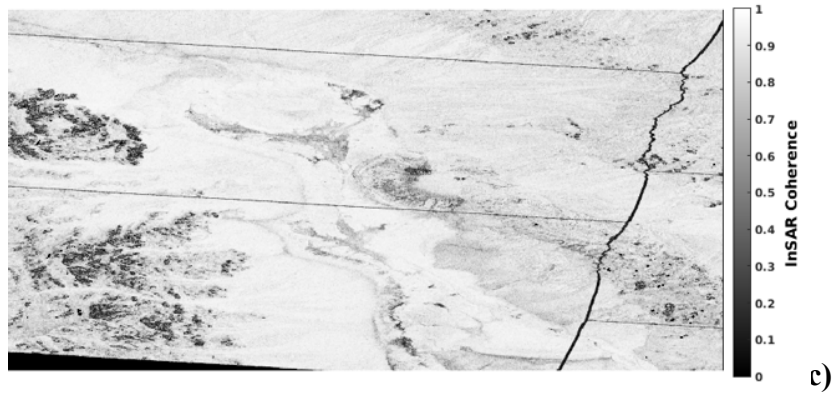
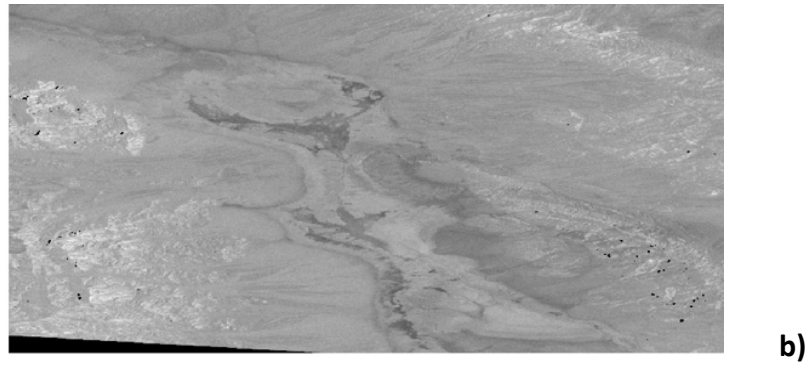
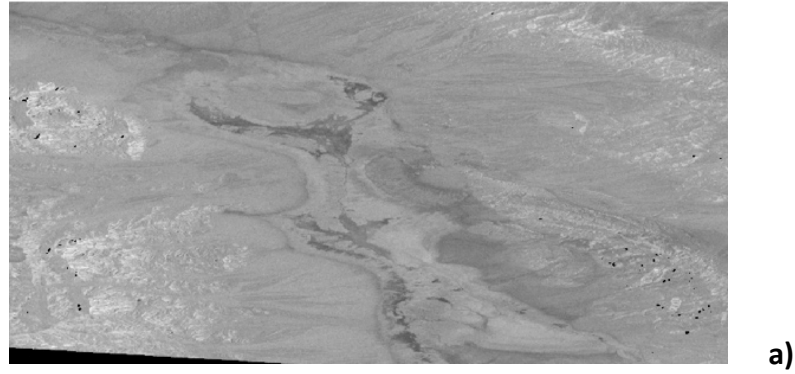


Figure A4.1 Sentinel-1 [GSLC] products example over Death Valley National Park, California, US. **a)** GSLC1: Intensity data of the first [GSLC] product (2017-05-27); **b)** GSLC2: Intensity data of the second [GSLC] product (2017-06-08); **c)** InSAR coherence map generated directly from A4.1a) and b); **d)** InSAR differential phase map generated directly from A4.1a) and b).

Some advanced [GSLC] product can be provided with “2.12 Radar Unit Look Vector Grid Image” per-pixel metadata (Figure A4.2) which gives the accurate 3-D components radar unit look vector used as for example in decomposing the vertical and horizontal component of an InSAR surface displacement estimate.

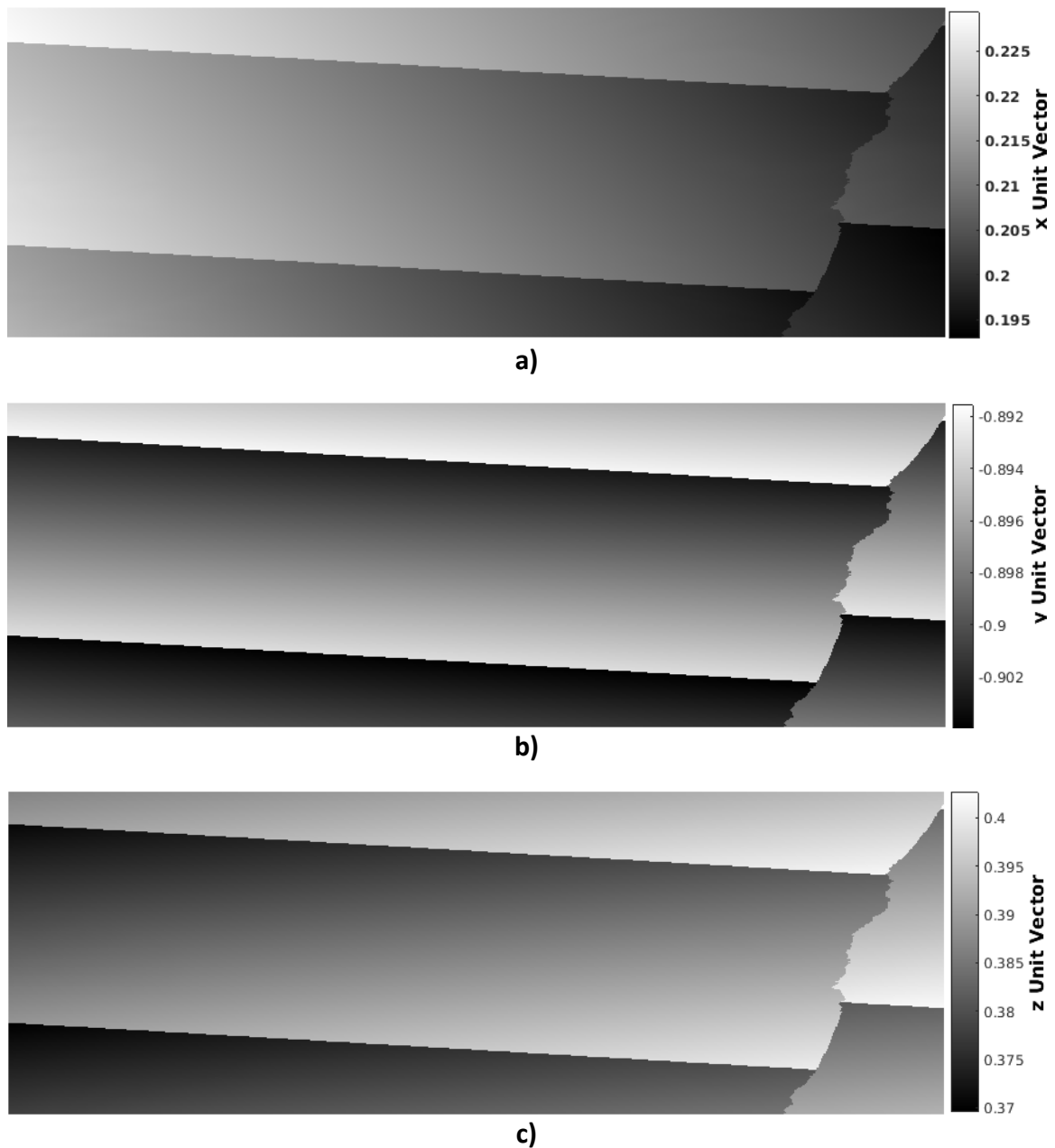


Figure A4.2 3-D components radar unit look vector of the [GSLC] product in Figure A4.1. **a)** x unit component; **b)** y unit component; **c)** z unit component.