



Web-Enabled Landsat Data (WELD)

John Faundeen
March 7, 2012

U.S. Department of the Interior
U.S. Geological Survey

WELD

WELD

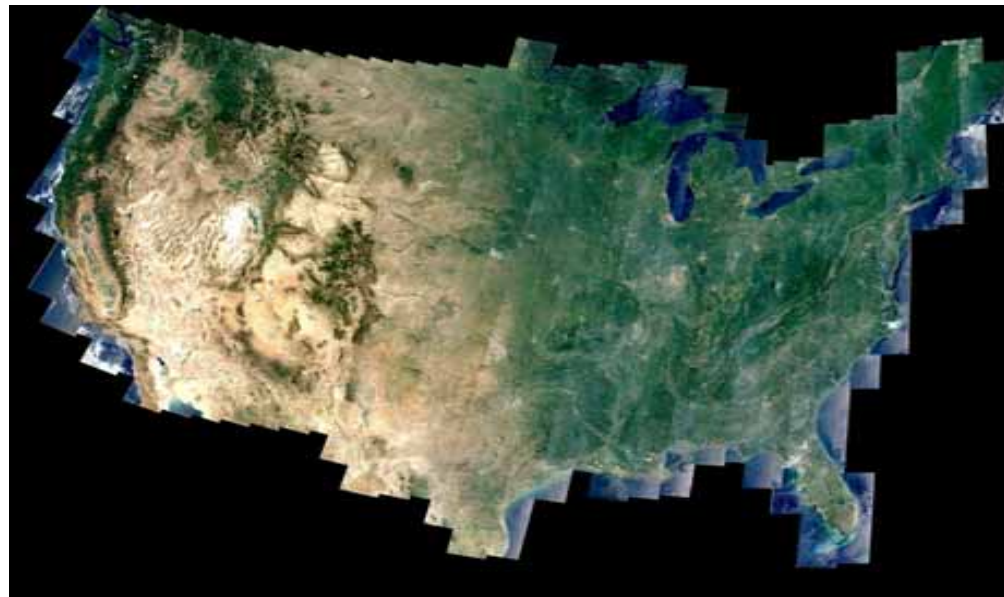
- **Collaboration**
 - USGS
 - South Dakota State University Geographic Information Science Center of Excellence
- **Funded by NASA**
 - USGS cost sharing
- **WELD generates 30-meter composites**
 - Landsat 7 ETM+
 - Terrain corrected (Level 1T)
 - Weekly, monthly, seasonal and annual periods mosaics
 - For conterminous United States (CONUS) and Alaska.

Ecosystems  Climate  Energy and Minerals  Natural Hazards  Environment and Human Health  Water



WELD

These mosaics provide consistent data that can be used to derive land cover as well as geo-physical and biophysical products for regional assessment of surface dynamics and to study Earth system functioning.

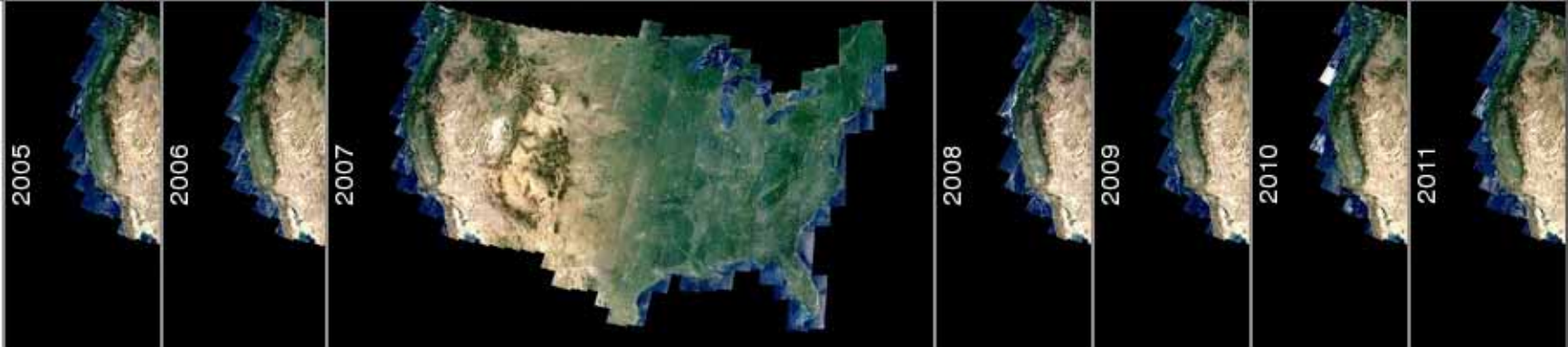


[Ecosystems](#)  [Climate](#)  [Energy and Minerals](#)  [Natural Hazards](#)  [Environment and Human Health](#)  [Water](#)

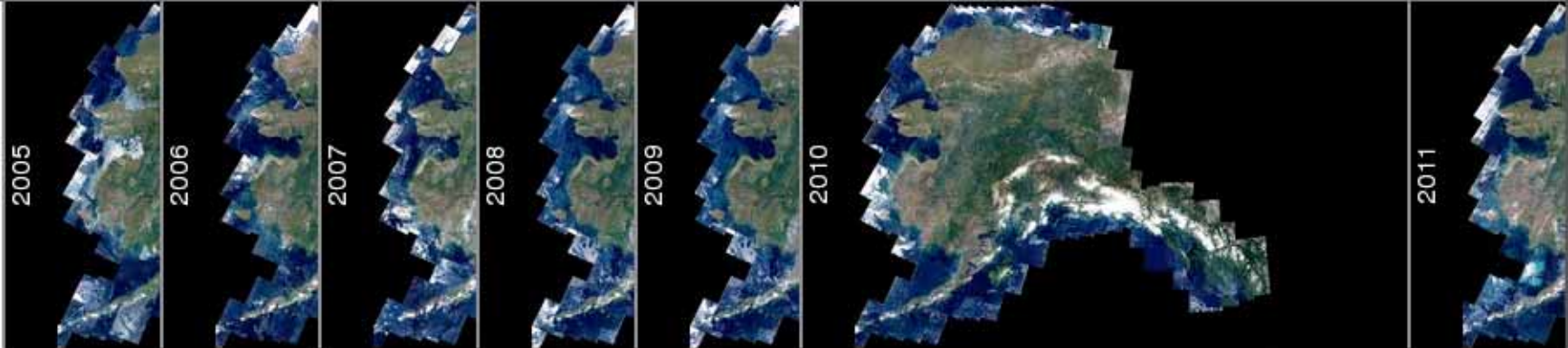


WELD – Custom GeoTIFF Subsets

CONUS



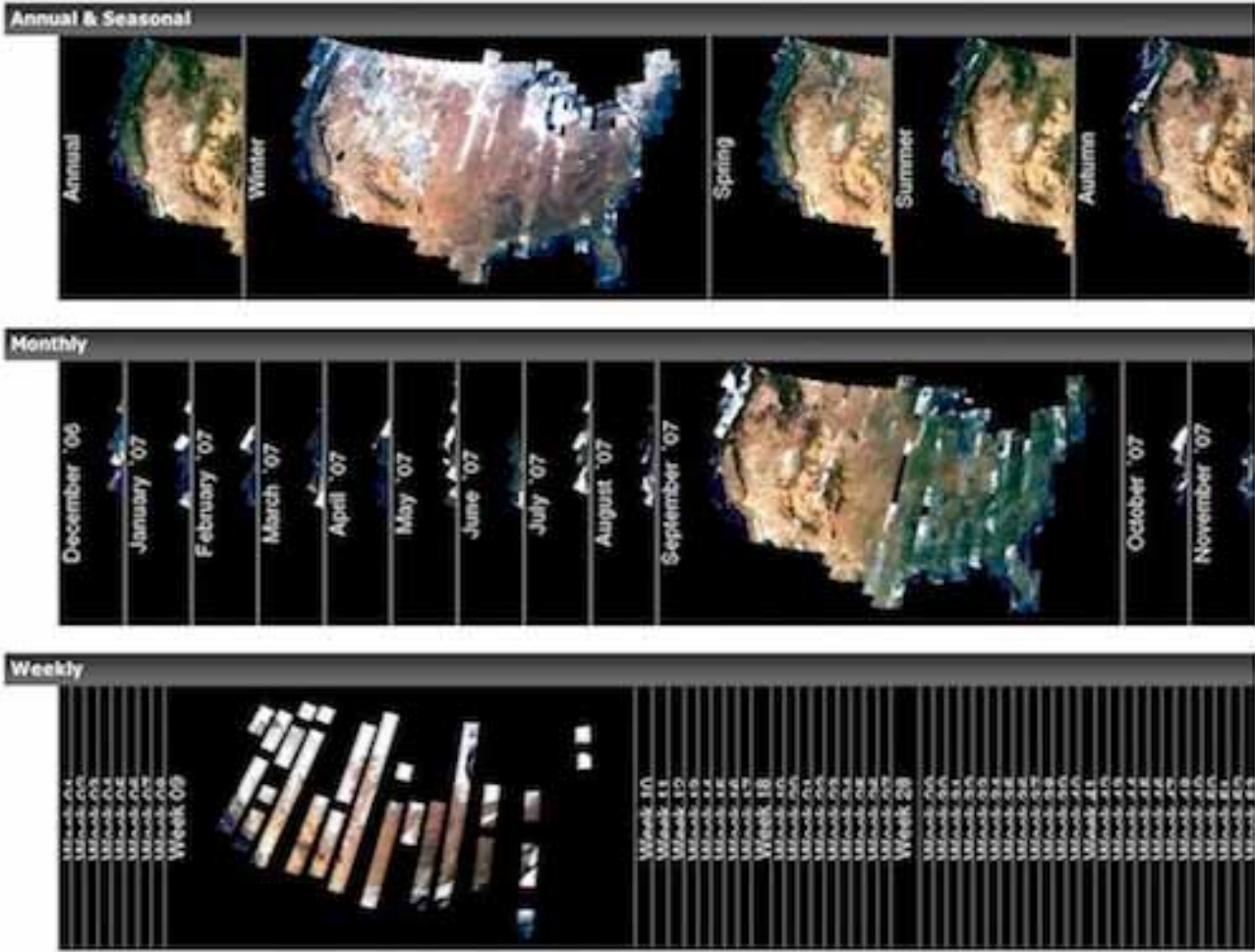
Alaska



Ecosystems  Climate  Energy and Minerals  Natural Hazards  Environment and Human Health  Water



WELD – Custom GeoTIFF Subsets



Ecosystems Climate Energy and Minerals Natural Hazards Environment and Human Health Water



WELD – Custom GeoTIFF Subsets

Vector
 Zoom In (or double click)
 Zoom Out (or mouse wheel)
 Next Period
 Previous Period

Order Coordinates

Longitude/latitude
 Albers

Hold the shift button & drag the mouse to define your order area, or enter the area coordinates below
 Note: In using Long/Lat the coordinates refer to the SW and NE corners of the area

North:
 South:
 West:
 East:

Click the left button to define a single pixel time series dump, or enter the pixel coordinates below

North:
 East:

[Ecosystems](#)
[Climate](#)
[Energy and Minerals](#)
[Natural Hazards](#)
[Environment and Human Health](#)
[Water](#)



WELD – Custom GeoTIFF Subsets

Enter email address

Email:

Submit

You have selected a CONUS region of 4400 x 6129 30m pixels


You can order this region for the following WELD products:

- Spring [2007]
- Annual [December 2006 - November 2007]
- Seasonal [December 2006 - November 2007]
- Monthly [December 2006 - November 2007]
- Monthly [January 2007 - December 2007]
- Weekly [January 2007 - December 2007]

and for the following WELD product bands:

- All
 - Band1_TOA_REF
 - Band2_TOA_REF
 - Band3_TOA_REF
 - Band4_TOA_REF
 - Band5_TOA_REF
 - Band7_TOA_REF
- All
 - Band61_TOA_BT
 - Band62_TOA_BT
- All
 - NDVI_TOA
- All
 - Day_Of_Year
 - Num_Of_Obs
 - Saturation_Flag
- All
 - DT_Cloud_State
 - ACCA_State

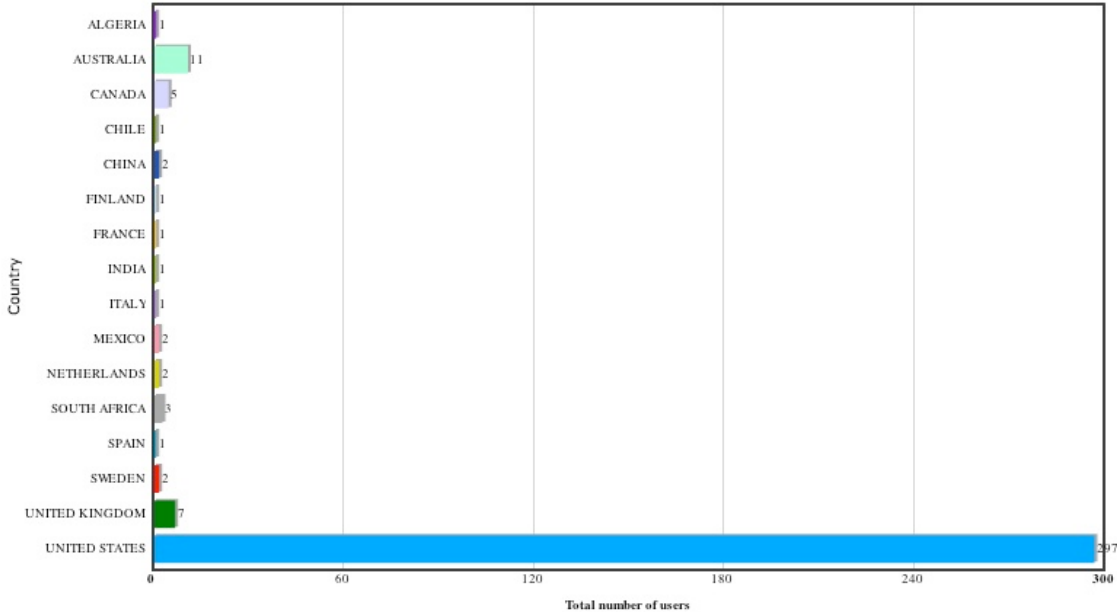
Place order >>

Ecosystems  Climate  Energy and Minerals  Na



WELD Distribution 2011

Number of unique users ordered products by Country



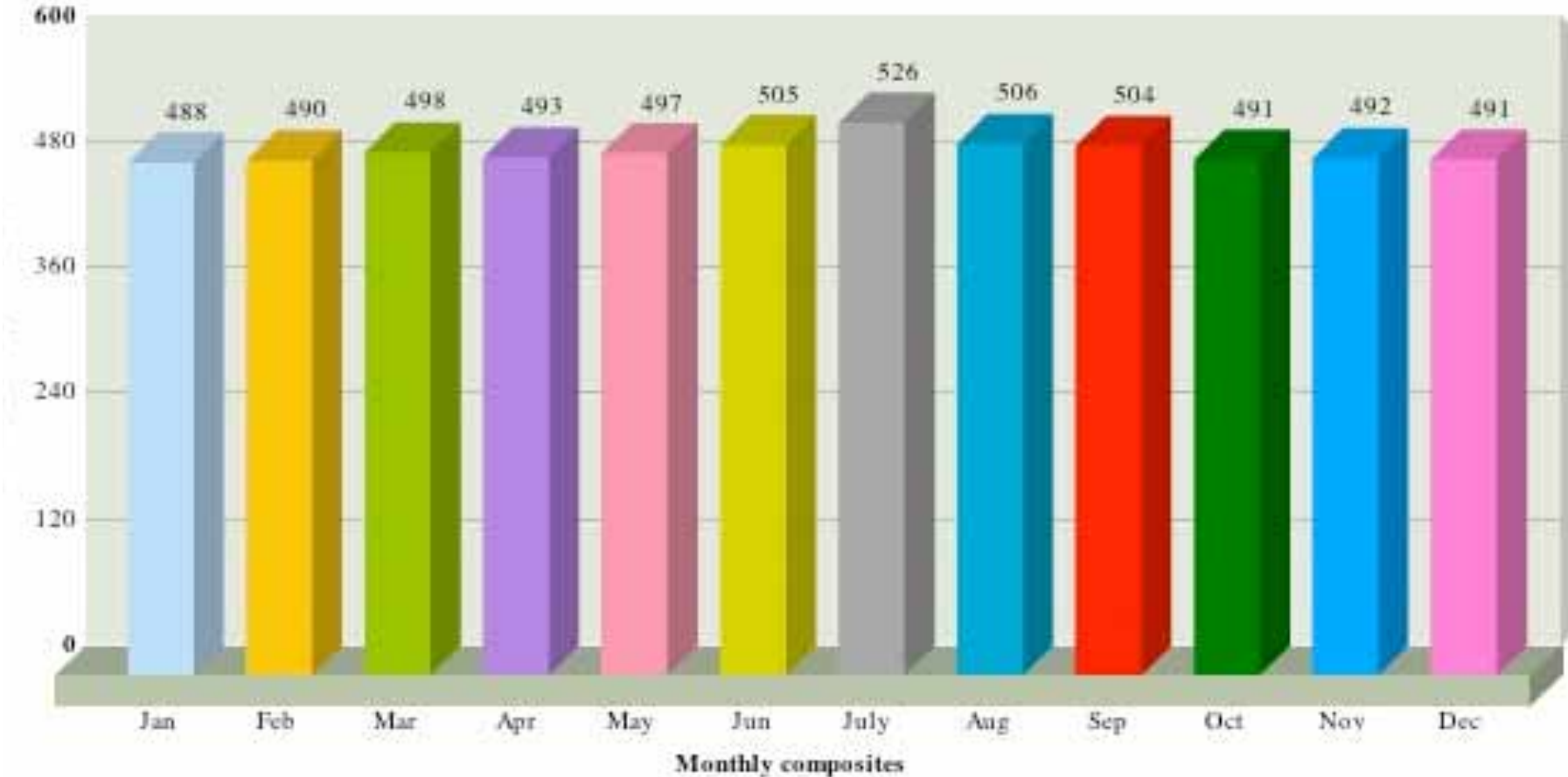
Other Metrics

- Average number of 30m pixels ordered by each user : 661307601
- Average number of orders placed by each user : 40
- Number of unique users who registered : 317
- Number of unique users who ordered data : 338
- Total number of orders : 13665
- Total volume of orders : 2.633TB

Ecosystems  Climate  Energy and Minerals  Natural Hazards  Environment and Human Health  Water



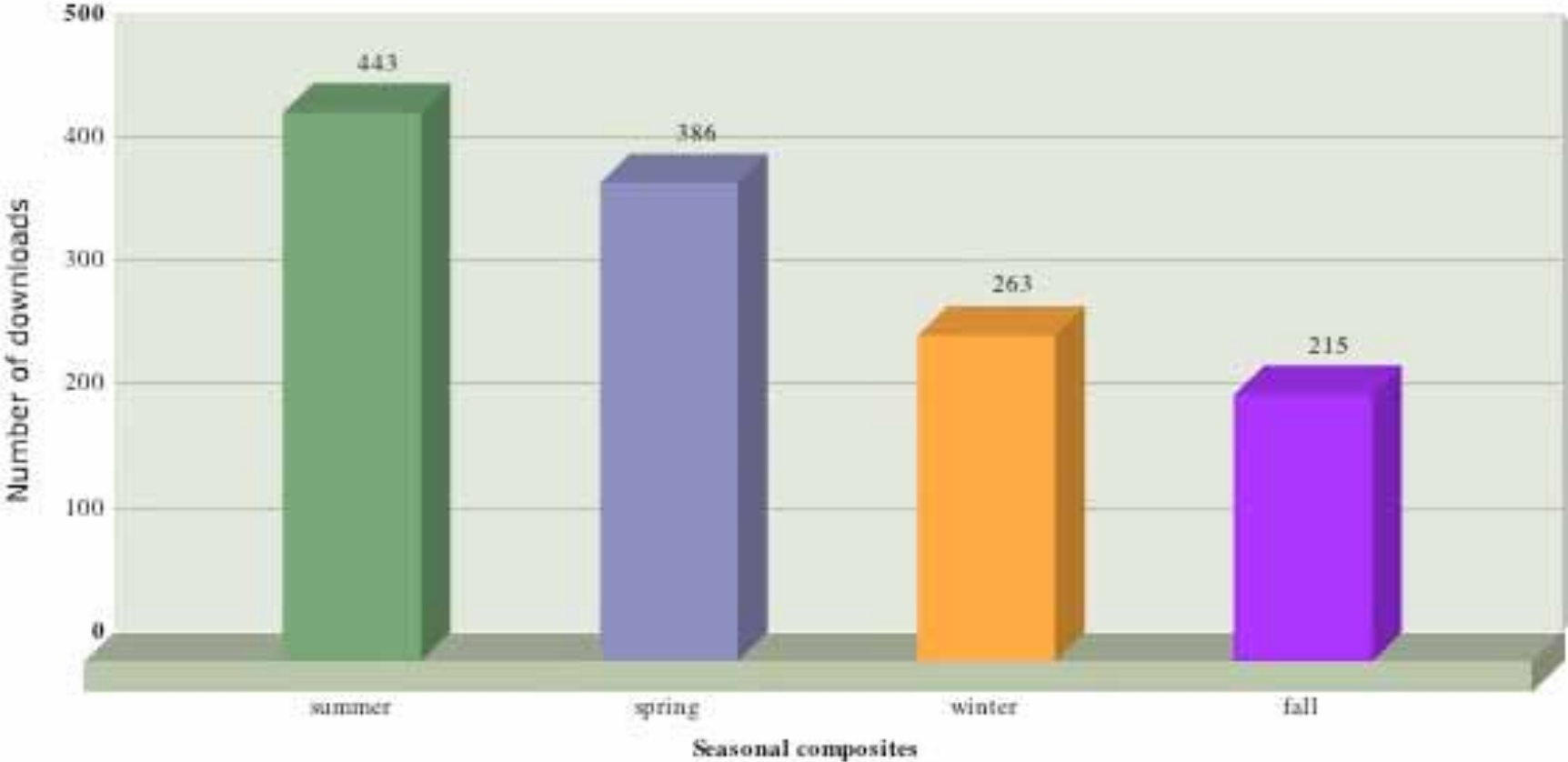
WELD Distribution 2011



Ecosystems Climate Energy and Minerals Natural Hazards Environment and Human Health Water



WELD Distribution 2011



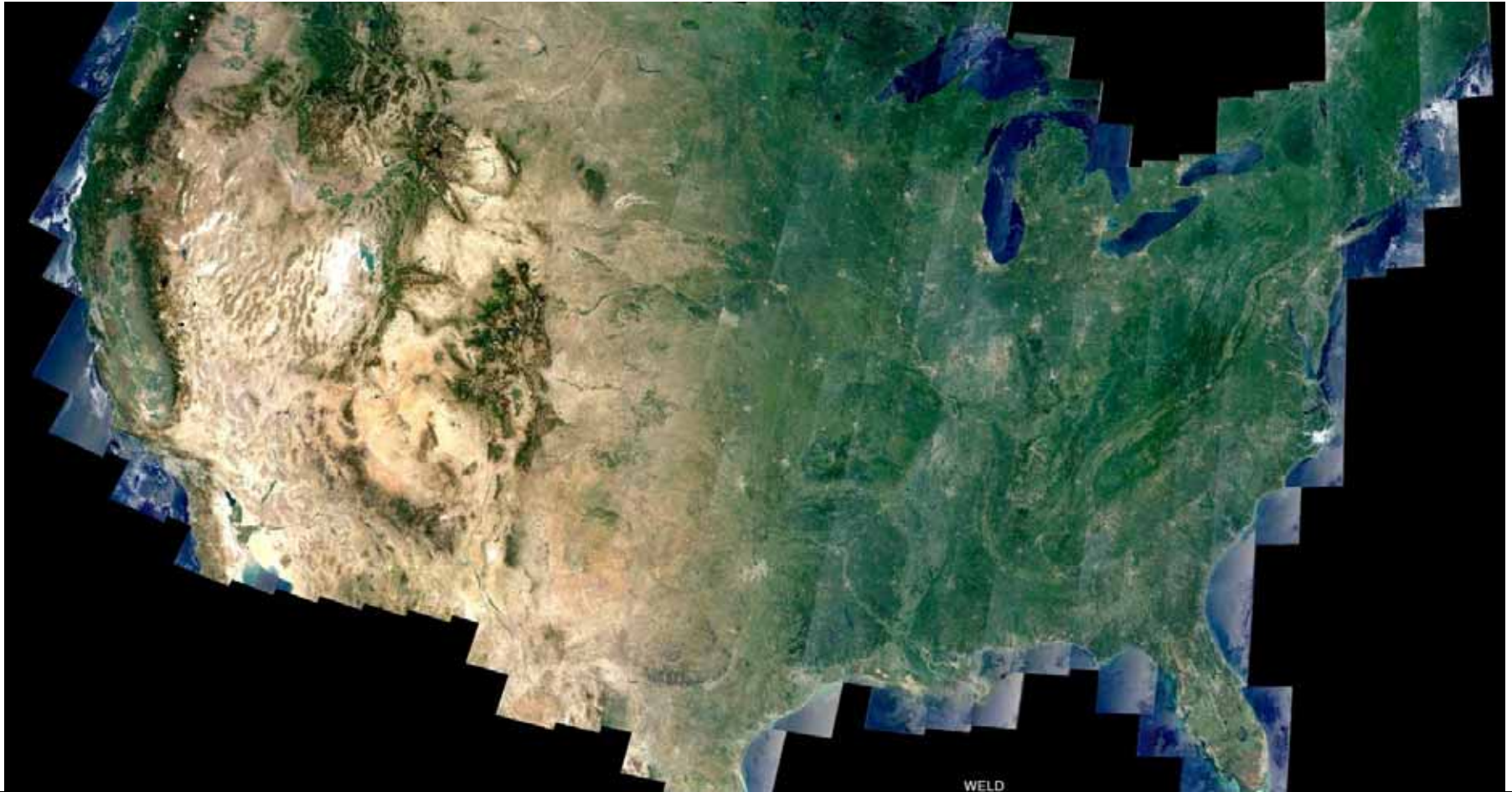
Ecosystems Climate Energy and Minerals Natural Hazards Environment and Human Health Water



WELD Summary & Plans

- **Available Now Over US:**
 - 2005, 2006, 2007, 2008, 2009, 2010 and 2011
- **Coming for US:**
 - 2002, 2003, 2004, and 2012
- **All years will be reprocessed as improved versions of the algorithms are developed.**
- **Plans:**
 - CONUS 30m land cover: weekly snow/ice, water and bare ground; **annual peak greenness tree cover**, bare ground and other vegetation.

WELD <http://landsat.usgs.gov/WELD.php>



Ecosystems  Climate  Energy and Minerals  Natural Hazards  Environment and Human Health  Water

