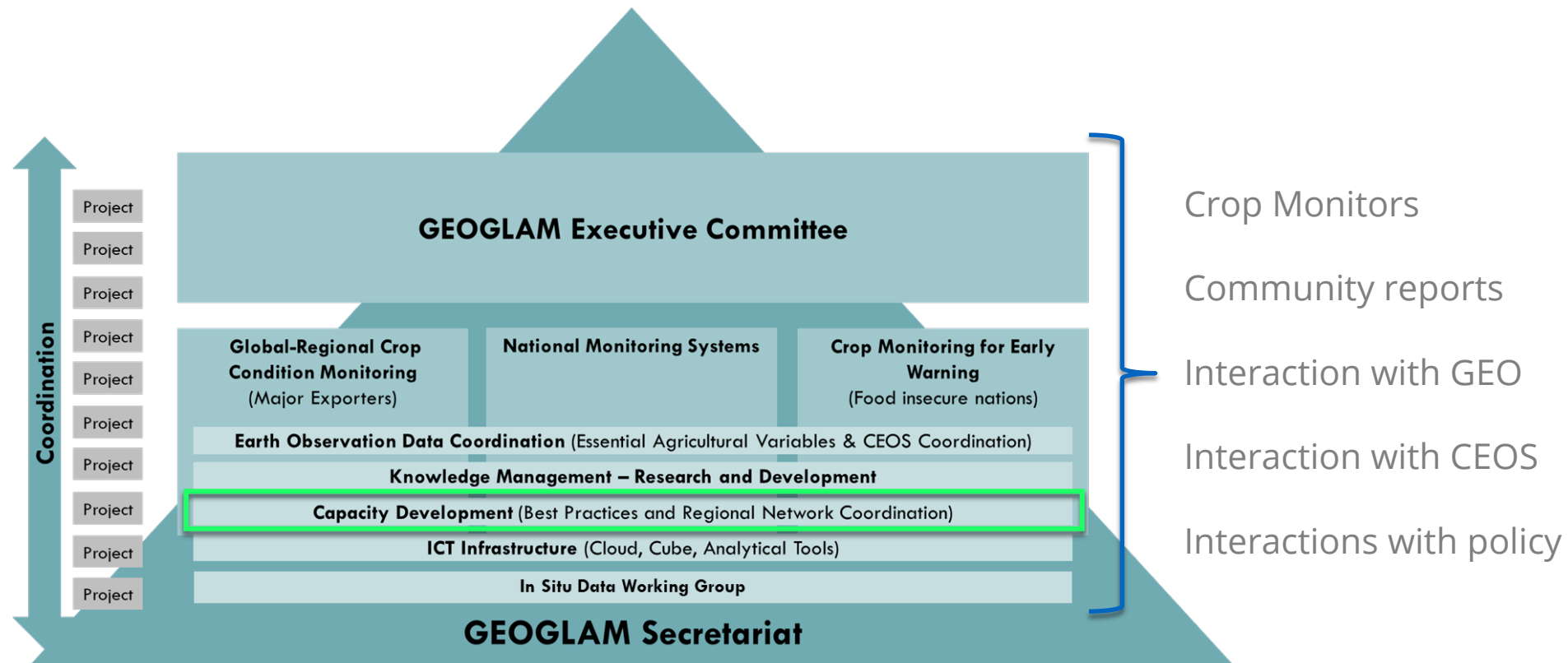




# **GEOGLAM Capacity Development Guidance Document**

Andy Nelson (ITC, UTwente) and Alyssa Whitcraft (UMD, GEOGLAM)

# GEOGLAM today



# GEOGLAM Capacity Development Working Group

## Team Roles & Responsibilities

Develop a strategic vision for capacity development for GEOGLAM

Engage with other Capacity Development organisations

➡ Help organise materials and resources for future reuse by actors across GEOGLAM

*Team Co-Leads: Andy Nelson (ITC, U.Twente) & Alyssa Whitcraft (UMD and GEOGLAM)*

# Capacity Development Guidance Document

## A. Introduction

Why do we need this document?

Who is the target audience?

## B. Capacity development in GEOGLAM

The GEOGLAM approach to CapDev

The GEOGLAM guiding principles for CapDev

A collaborative process for designing CapDev interventions

## C. Theory of Change for describing CapDev interventions

Theory of Change model

Theory of Change terminology

## D. Practice & tools for designing CapDev interventions

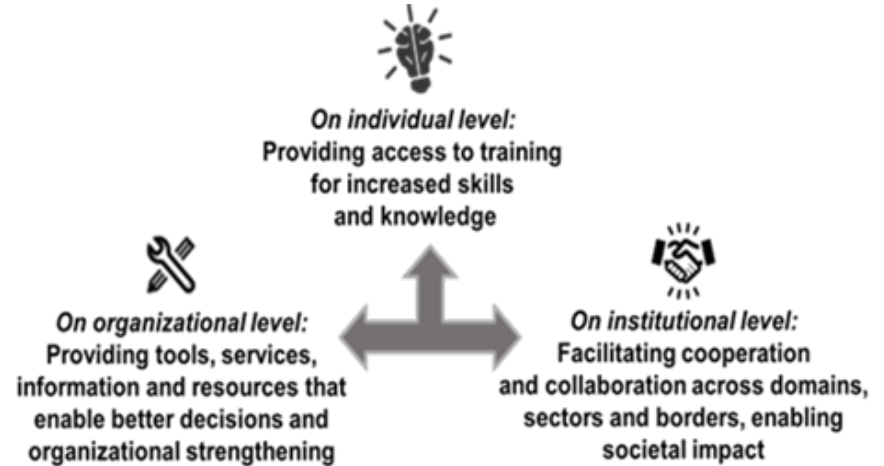
Designing the Impact Pathway

Tools for designing your CapDev intervention

Developing a Monitoring, Evaluation and Learning system to measure progress

## E. GEOGLAM case studies

## F. GEOGLAM stewardship of materials and lessons learned



*CapDev on individual, organizational and institutional levels  
(Source: [Towards a GEO Strategy for Capacity Development](#))*

# Capacity Development Guidance Document

## A. Introduction

Why do we need this document?

Who is the target audience?

## B. Capacity development in GEOGLAM

The GEOGLAM approach to CapDev

The GEOGLAM guiding principles for CapDev

A collaborative process for designing CapDev interventions

## C. Theory of Change for describing CapDev interventions

Theory of Change model

Theory of Change terminology

## D. Practice & tools for designing CapDev interventions

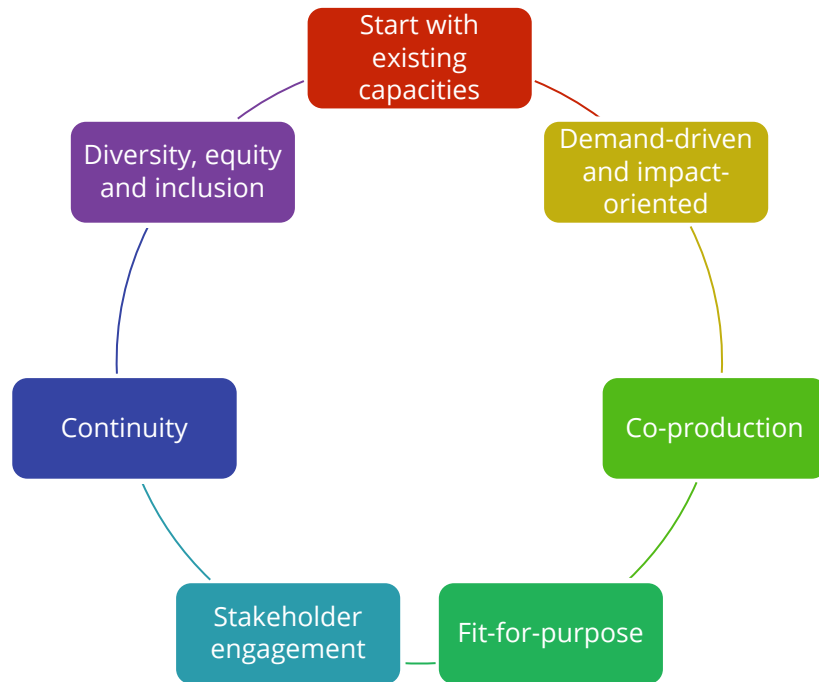
Designing the Impact Pathway

Tools for designing your CapDev intervention

Developing a Monitoring, Evaluation and Learning system to measure progress

## E. GEOGLAM case studies

## F. GEOGLAM stewardship of materials and lessons learned



*GEOGLAM's principles for CapDev  
(Adapted from the Digital Earth Africa capacity development strategy)*

# Capacity Development Guidance Document

## A. Introduction

Why do we need this document?

Who is the target audience?

## B. Capacity development in GEOGLAM

The GEOGLAM approach to CapDev

The GEOGLAM guiding principles for CapDev

A collaborative process for designing CapDev interventions

## C. Theory of Change for describing CapDev interventions

Theory of Change model

Theory of Change terminology

## D. Practice & tools for designing CapDev interventions

Designing the Impact Pathway

Tools for designing your CapDev intervention

Developing a Monitoring, Evaluation and Learning system to measure progress

## E. GEOGLAM case studies

## F. GEOGLAM stewardship of materials and lessons learned



*Meeting plan for co-developing the Theory of Change  
(Source: S. Bontemps)*





# Capacity Development Guidance Document

## A. Introduction

Why do we need this document?

Who is the target audience?

## B. Capacity development in GEOGLAM

The GEOGLAM approach to CapDev

The GEOGLAM guiding principles for CapDev

A collaborative process for designing CapDev interventions

## C. Theory of Change for describing CapDev interventions

Theory of Change model

Theory of Change terminology

## D. Practice & tools for designing CapDev interventions

Designing the Impact Pathway

Tools for designing your CapDev intervention

Developing a Monitoring, Evaluation and Learning system to measure progress

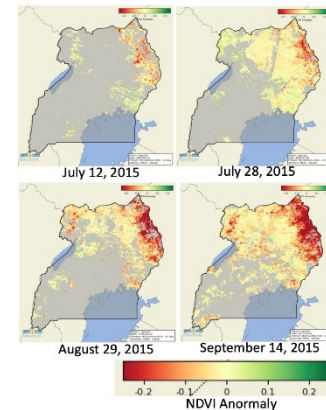
## E. GEOGLAM case studies

## F. GEOGLAM stewardship of materials and lessons learned

## 10 case studies from Africa, Asia, and the Americas

Problem statement

- ➡ The expected impact of the CapDev initiative
  - ➡ The stakeholders involved and their roles
    - ➡ The main outcomes of the CapDev initiative
      - ➡ Concrete activities and outputs
        - ➡ Evaluation, reflection, and lessons learned
          - ➡ Opportunities for up-scaling



[L] Stakeholder meeting in Mali (S. Bontemps) [R] Crop conditions across Uganda, (C. Nakalembe, GLAM)



# Capacity Development Guidance Document

We all want to get more use of EO

The document informs practitioners about what we have found that works.

## **Next Steps in 2022/23**

- Review & approval by the GEOGLAM Executive Committee
- Sharing with relevant networks for feedback
- Explore endorsement by CEOS
- Endorsement by GEO and reuse by other GEO communities

## **Our request today – for discussion / consideration / advice**

- Is CEOS endorsement the way forward?
- What process should be followed to get good practice document on Capacity Development socialised and referenced ?



**Thank you. Questions?**