

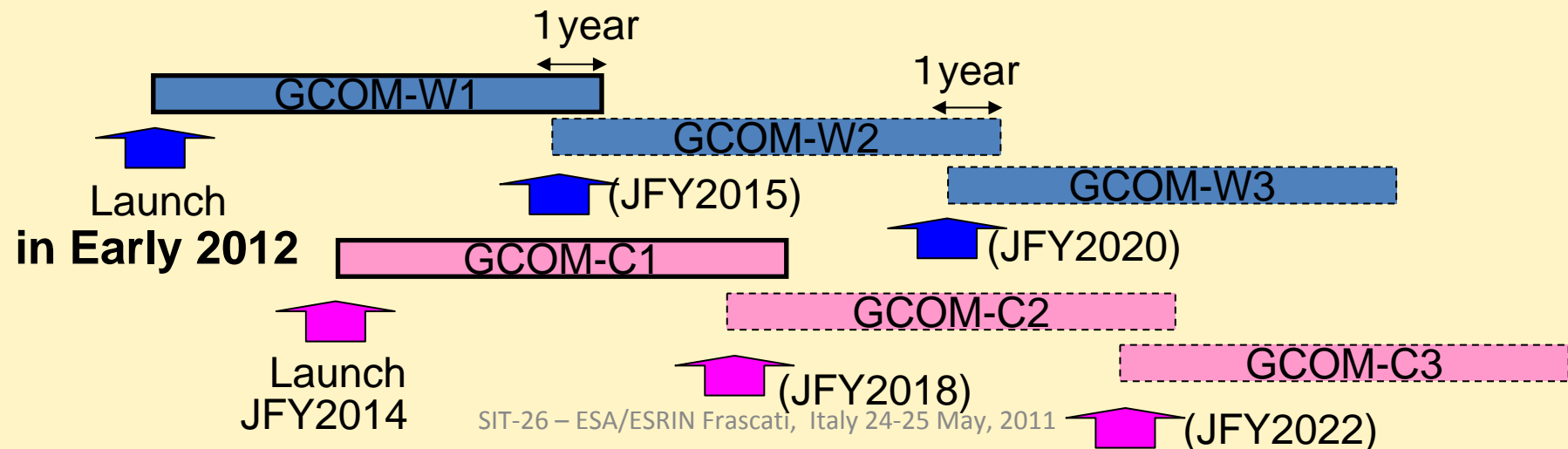
JAXA Program status

Makoto Kajii, SIT Chair



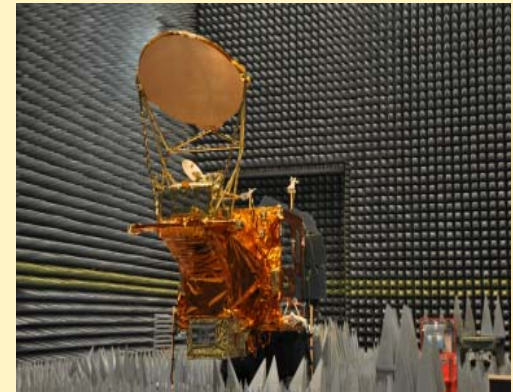
GCOM Mission

- GCOM consists of GCOM-W and GCOM-C series:
 - GCOM-W with **AMSR2** (Advanced Microwave Scanning Radiometer2) and its follow-on will contribute to the observations related to global water and energy circulation.
 - GCOM-C with **SGLI** (Second-generation Global Imager) and its follow-on will contribute to the surface and atmospheric measurements related to the carbon cycle and radiation budget.
- GCOM is a long-term mission to observe more than 10 years:
 - Three consecutive generations of satellites with one year overlap in orbit enables over 13 year-observation in total.



GCOM-W1 status

- First satellite of GCOM Mission
- AMSR-2 is follow on of MASR on NASA/AQUA
 - Passive Microwave observation with six bands between 7 to 89 GHz.
 - 99 % of the global observation in two days
- The 3rd Research Announcement has been finished in last March
- Participate in the A-train
- Thermal vacuum test in this summer.
- To be launched in early 2012 by H-IIA sharing with KOMPSAT-3

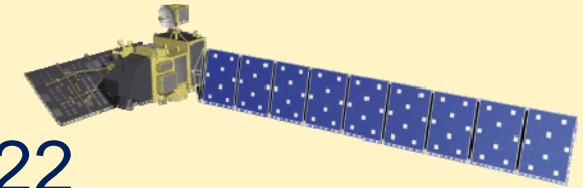


EMCTest
(November 2010)



Vibration Test
(January 2011)

ALOS termination

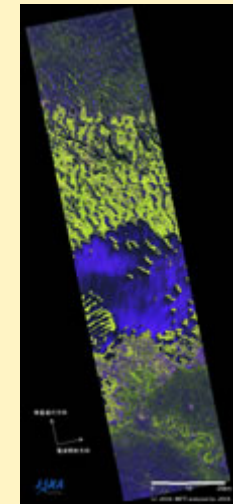


- ALOS lost electric power on April 22
- Terminated its operation on May 12

Last shot of PALSAR
Lake Chad, Central
Africa

Major Achievements of the Program

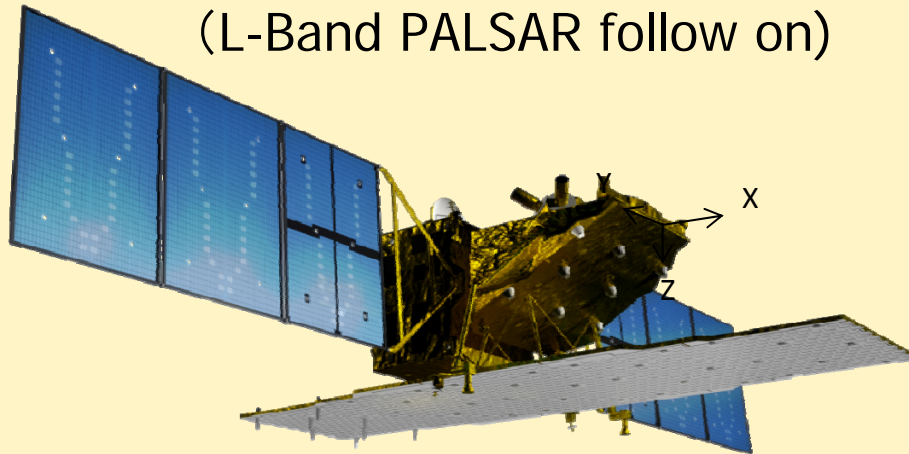
1. Successful operation of 5 year design life
2. 6.5 million scenes all over the Earth in 5 years
3. Emergency observations of disaster-stricken areas. (600 scenes on East Japan Earthquake)
4. Mapping and updating topographic maps of 1/25,000 in Japan, as well as for mapping in African countries.
5. Enhancement of relationship with data node agencies
6. Cooperation with Brazil and the World Bank on the data



ALOS-2 & 3

ALOS-2

(L-Band PALSAR follow on)



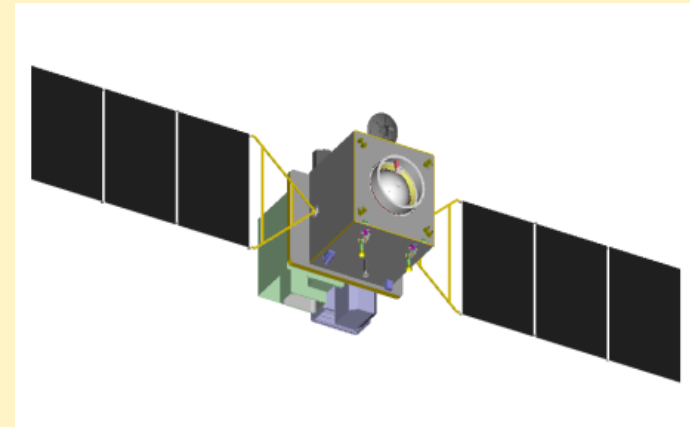
To be launched in summer 2013

(ALOS-2 mission)

- Disaster monitoring
- Land Monitoring
- Agricultural Monitoring
- Natural Resource Exploration
- Global Forest Monitoring
- Potential use - maritime safety

ALOS-3

(PRISM & AVNIR follow on)



- Currently under phase A
- Phase-up review planned in 2011
- launch planned in 2015

Support from Sentinel Asia and the International Disaster Charter in response to the Great East Japan Earthquake



We sincerely appreciate the provision of the satellite images of 5000 scenes obtained from 27 satellites of 14 countries and agencies in response to the Great East Japan Earthquake.

International Disasters Charter	
	LANDSAT-5,-7 EO-1 USGS MODIS Quickbird-2 Worldview-1,-2
	Cartosat-2
	ENVISAT
	DARSAT-2
	KOMPSAT-2
	DLR TerraSAR-X,RapidEye
	cnes SPOT-4,5

Sentinel Asia	
	THEOS
	FORMOSAT-2



Area: Iwate-Fukushima
Source: THEOS
Acquired: 12/Mar/2011
Copyright: GISTDA

Individual offer	
	COSMO-SkyMed
	DEIMOS-1
	DubaiSAT
	Resurs-DK