



# GOES-R Advanced Baseline Imager (ABI) Aerosol Product Update

Shobha Kondragunta  
(NOAA/NESDIS/STAR)  
[Shobha.Kondragunta@noaa.gov](mailto:Shobha.Kondragunta@noaa.gov)

June 8-11, 2020

CEOS Atmospheric Composition – Virtual Constellation Meeting



# Advanced Baseline Imagers Aerosols

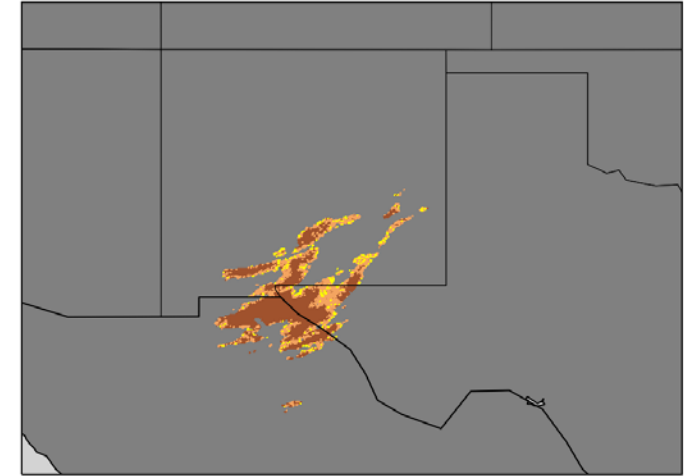
## GOES-16/17 ABI Aerosol Imagery and Products

- GeoColor
- Dust RGB
- Fire RGB, hot spots, fire radiative power
- Aerosol Optical Depth
- Aerosol Detection (smoke/dust)
- Derived surface PM2.5

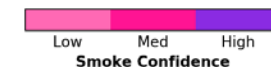
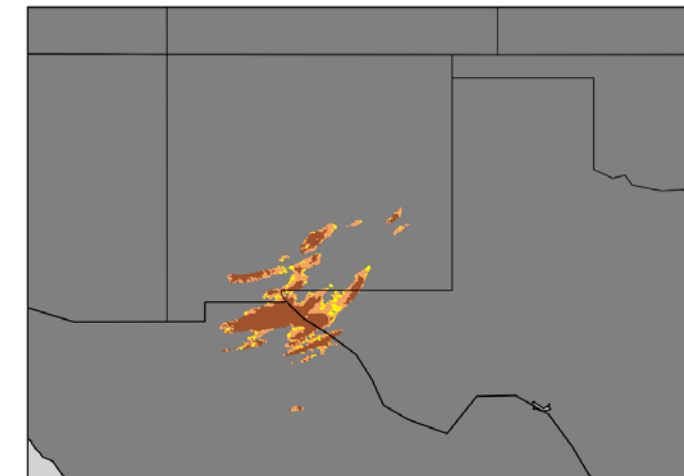
- GOES-17 Loop Heat Pipe Anomaly impacts mostly IR observations in the night. AOD product is minimally impacted whereas aerosol detection product is impacted certain time of the year. A predictive calibration minimizes the impact.
- GOES-16 AOD has a diurnal bias. We have algorithm improvements coming in to minimize the bias. As an interim, we are providing a bias correction algorithm that users can apply

2

GOES-17 ABI  
Aerosol Detection  
19:00 UTC, 10 Apr 2019



GOES-16 ABI  
Aerosol Detection  
19:00 UTC, 10 Apr 2019



# Accessing ABI Aerosol Imagery and Products

3

- <https://www.star.nesdis.noaa.gov/smcd/spb/aq/AerosolWatch/>
  - ▣ Near real time imagery (GeoColor, AOD, ADP, Fire hot spots, Fire Radiative Power, dust RGB, surface PM2.5). Ten minute refresh
  - ▣ Latency 20 minutes from data capture
- [www.class.noaa.gov](http://www.class.noaa.gov)
  - ▣ Full archive
- <ftp://ftp.star.nesdis.noaa.gov/pub/smcd/hzhang/GOES-16/NRT/>
  - ▣ Ten day rotation
  - ▣ Full Disk, CONUS every 10 minutes

Follow us on twitter @AerosolWatch