



MAIA

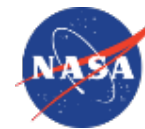
Associating particulate air pollution with human health



Multi-Angle Imager for Aerosols

Overview

David J. Diner

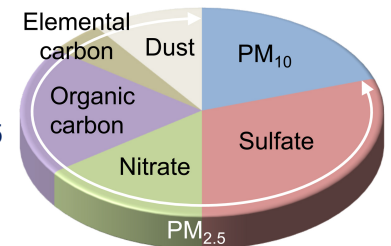


Jet Propulsion Laboratory
California Institute of Technology

Objective: Assess the impacts of different size and compositional mixtures of airborne PM on human health

- MAIA integrates data from the satellite instrument, PM surface monitors, and WRF-Chem to generate data products (distributed at NASA LaRC Atmospheric Science Data Center)
- Epidemiological studies will be performed using non-public health records

- Products in development
 - Level 1 georectified radiance and polarization (250 m grid)
 - Level 2 cloud mask, aerosol parameters, PM₁₀, total/speciated PM_{2.5}
 - Level 4 daily gap-filled PM₁₀, total/speciated PM_{2.5} (1 km grid)



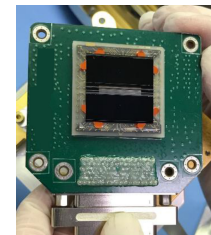
- Satellite instrument being built at JPL



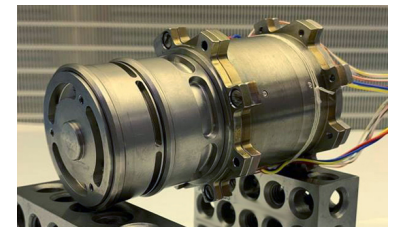
UV-SWIR spectro-polarimetric camera



Polarization modulator



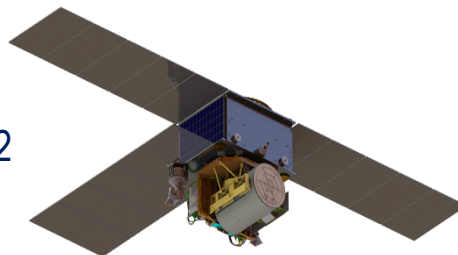
Focal plane



Gimbal actuator

- Mission attributes

General Atomics
Orbital Test Bed-2
spacecraft



Launch: 2022 (to be confirmed)
Baseline duration: 3 years
740-km altitude sun-synchronous orbit
10:30 am equator crossing

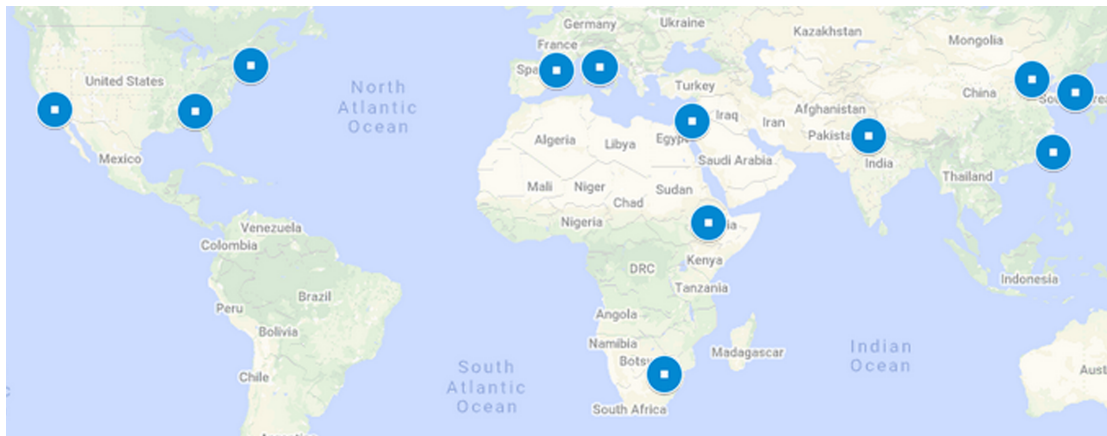
Speciated PM_{2.5} surface monitor utilization and health studies in the Primary Target Areas



- Governmental (CSN, IMPROVE, IDAEA, ARPA)
- Surface Particulate Matter Network (SPARTAN)
- Gov't.+SPARTAN
- Gov't.+Aerosol Mass & Optical Depth (AMOD)
- SPARTAN+AMOD
- SPARTAN+AMOD+aethalometers
- Gov't.+SPARTAN+AMOD+aethalometer

Health studies

Acute	Subchronic	Chronic
-------	------------	---------



Subject to updates

UnitedStates_SouthernCalifornia			
UnitedStates_CentralGeorgia			
UnitedStates_NewEngland			
Spain_Catalonia			
Italy_Central			
SouthAfrica_Gauteng			
Israel_CentralNorthern			
Ethiopia_Central			
India_Northern			
China_Northern			
Taiwan_Western			
SouthKorea_Central			