



Canadian Space Agency Update



Agence spatiale
canadienne

Canadian Space
Agency

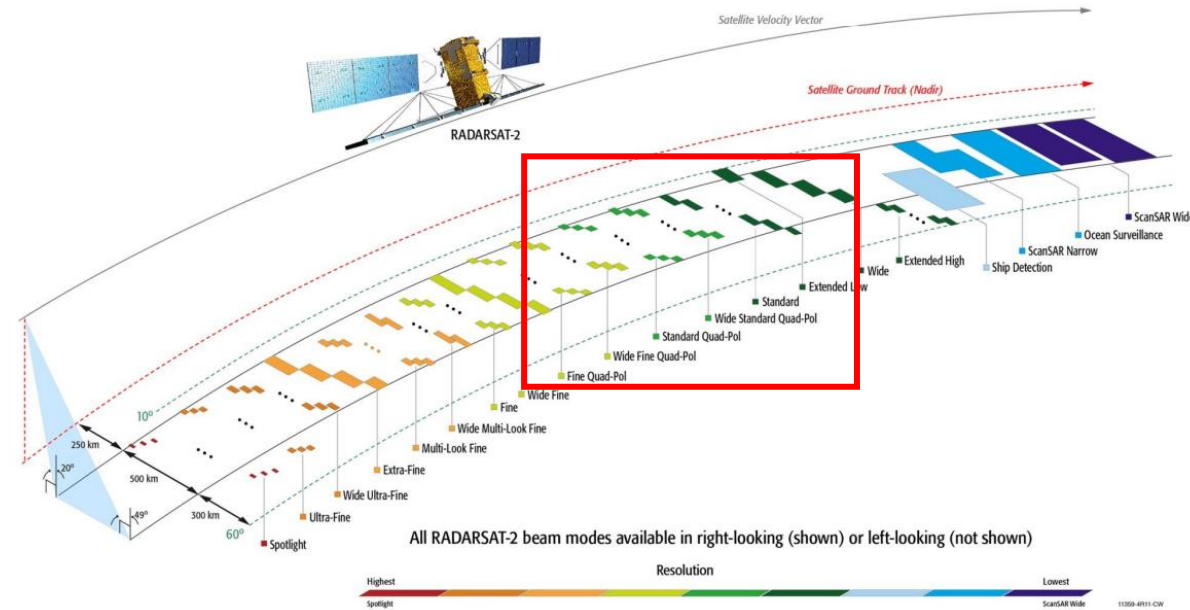
[#SatellitesPourLaTerre](#)

[#SatellitesForEarth](#)

Canada

CSA QP SAR Observations

- RADARSAT 2
 - Quad Pol mode supported by RADARSAT 2
 - Mission owned by MDA and data are commercially available



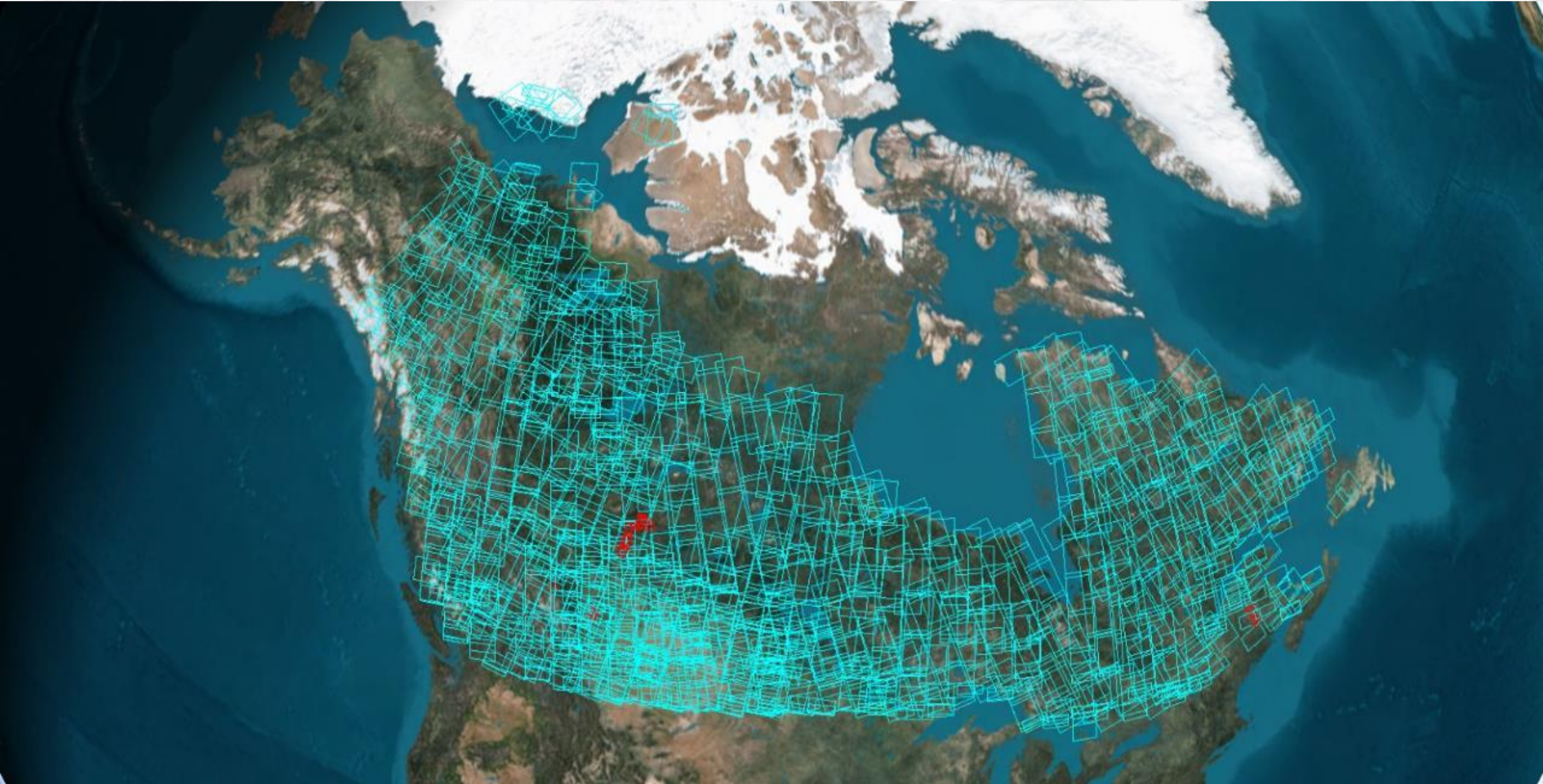
CSA QP SAR Observations

- RADARSAT Constellation Mission (RCM)
 - Quad Pol mode supported – ad hoc specific acquisitions currently made over JECAM R&D sites
 - Compact Polarization options available on every beam modes – systematic acquisitions over the Canadian land-mass.

Mode	Res. m	Looks rng × az	Swath Width (accessible) km	Nominal NESZ (dB)	Polarization Options				
					HH, VV, HV or VH	VV or HH +HV	HH+VV 1	Compact 2	HH+VV+ HV+VH
Low Resolution 100 m	100	8×1	500 (500)	-22	✓	✓	✓	✓	
Medium Resolution 50 m	50	4×1	350 (600) ³	-22	✓	✓	✓	✓	
High PRF m	50	4×1	350	-22	✓	✓		✓	
High Incidence m ⁴	50	4×1	133	-22	✓	✓		✓	
Medium Resolution 30 m	30	2×2	125 (350)	-24	✓	✓	✓	✓	
Medium Resolution 16 m	16	1×4	30 (350)	-25	✓	✓	✓	✓	
High Resolution 5 m	5	1	30 (500)	-19	✓	✓	✓	✓	
Very High Resolution 3 m	3×3 @35°	1	20 (500)	-17	✓	✓	✓	✓	
Low Noise	100	4×2	350 (600) ³	-25	✓	✓		✓	
Ship Detection	var.	5×1	350 (350)	variable	✓	✓		✓	
Spotlight	1×3 @35°	1	20 (350) [5 km in az]	-17	✓	✓		✓	
Quad-Polarization	9	1	20 (250)	-24					✓

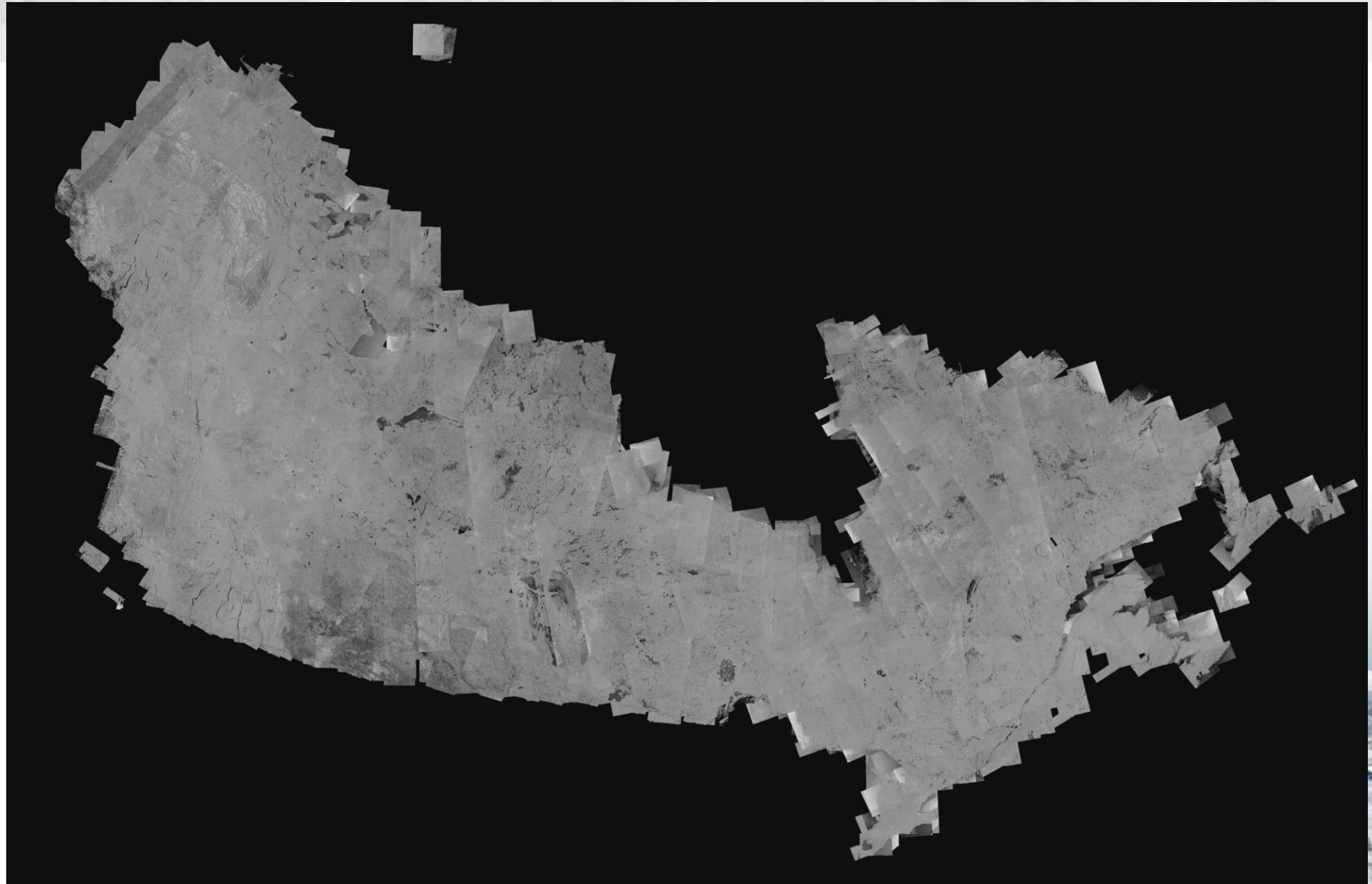
RCM Improved Public Data Access

(Canadian coast-to-coast 30m, Compact Polarimetry, every 12 days, from April to December)



RCM Improved Public Data Access

(Canadian coast-to-coast 30m, Compact Polarimetry, every 12 days, from April to December)



RCM Data Access

Access to 15-days acquisition plans:

[Acquisition plans of the RADARSAT Constellation Mission - Open Government Portal \(canada.ca\)](#)

Access to data portal:

<https://www.eodms-sgdot.nrcan-rncan.gc.ca/index-en.html>

More information:

MCR-INFO / RCM-INFO (ASC/CSA) mcr-info-rcm-info@asc-csa.gc.ca

