



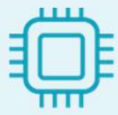
Japanese satellite data platform

April 5th, 2023

“Create new value through Space × Information Technology”

The 6 functions of Tellus

Computing resources



Processing



Data/API



Network

Interface



Tellus Operation
Systems



Integrated
development
Environment

Market



Data/API



Algorithm



Application

Owned media



SORABATAKE

Learning opportunity



BootCamp

Data competition



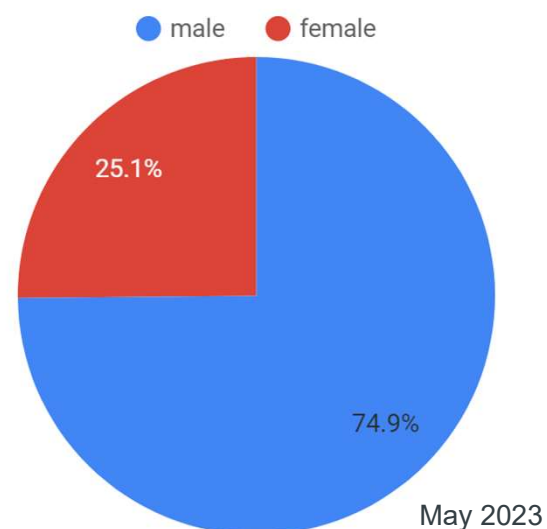
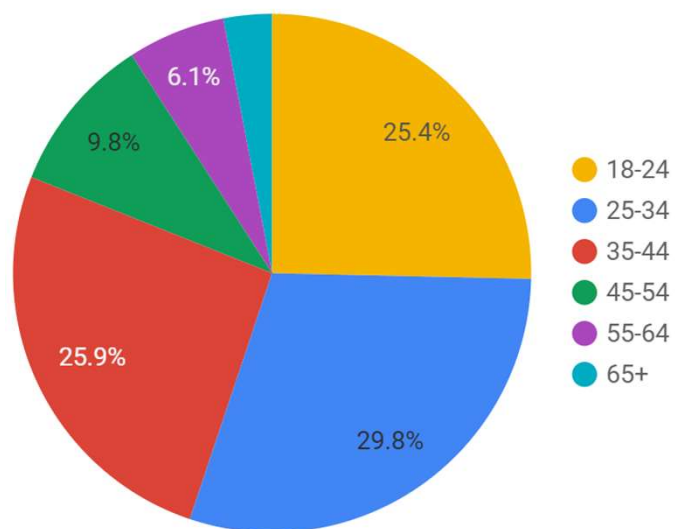
Tellus Satellite
Challenge

Figures at a glance

5,842
February 2019



37,424
April 2024



※Please note that this analysis is based upon “Google Analytics”

Data as a Service (DaaS)



光学データ



AVNIR-2
JAXA



光学マルチバンド
(0.8m/3.2m)データ
DigitalGlobe, Inc.-NTT DATA Corporation



SHIROP
JAXA



ASNARO-1
NEC



GRUS
Axelspace



HISUI
Japan Space Systems



CE-SAT-IIB
CANON ELECTRONICS INC.

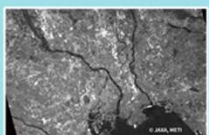


Maxar衛星
Maxar Technologies

合成開口レーダ (SAR) データ



PALSAR-2
JAXA



PALSAR
JAXA, METI

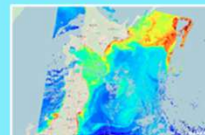


ASNARO-2
NEC Corporation

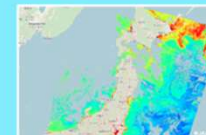
海面データ



GCOM-C
海面水温
JAXA



GCOM-C
クロロフィルa濃度
JAXA



GCOM-C
懸濁物質濃度
JAXA

標高データ

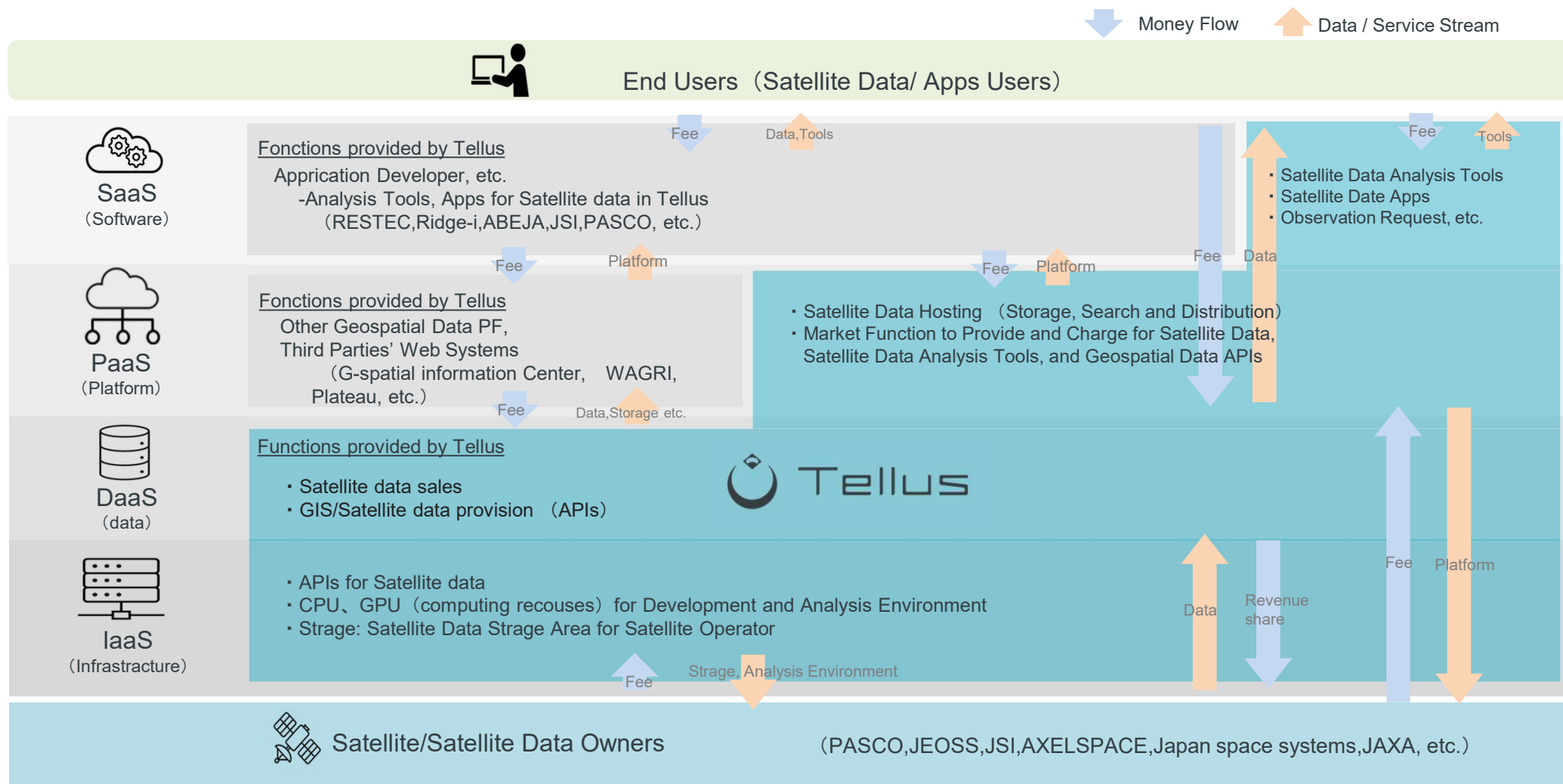


ASTER GDEM
METI-NASA

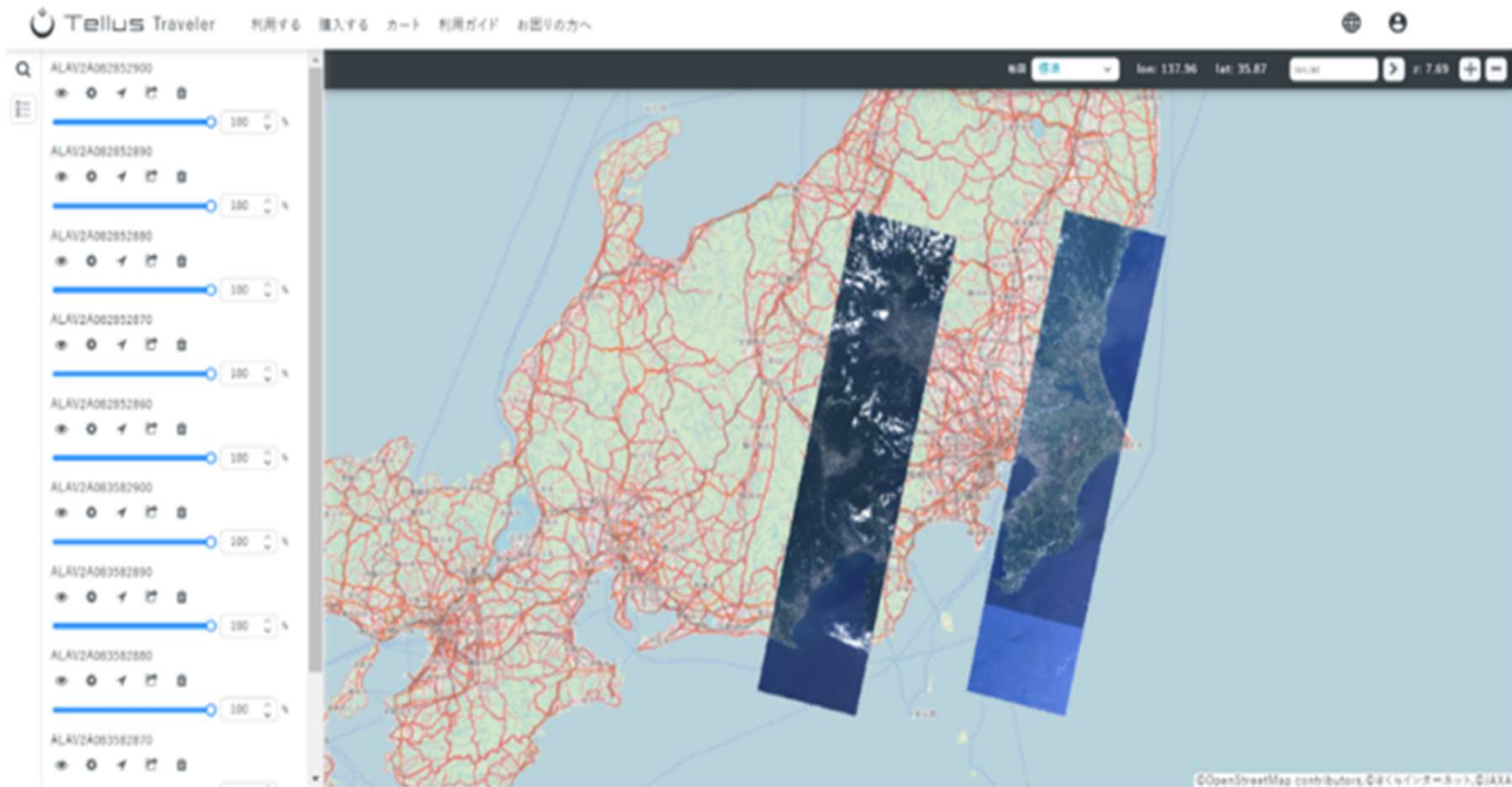


AW3D30
JAXA

Tellus Business Model



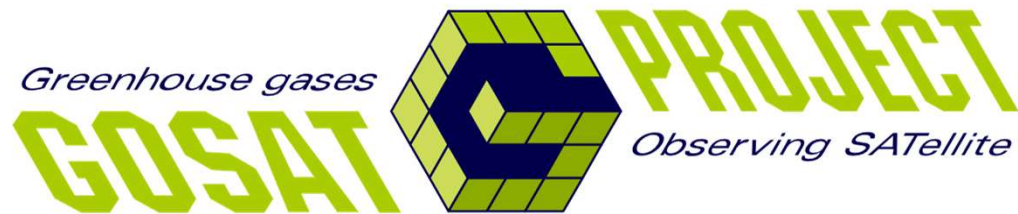
Satellite Data Hosting Service



Platform as a Service (PaaS)



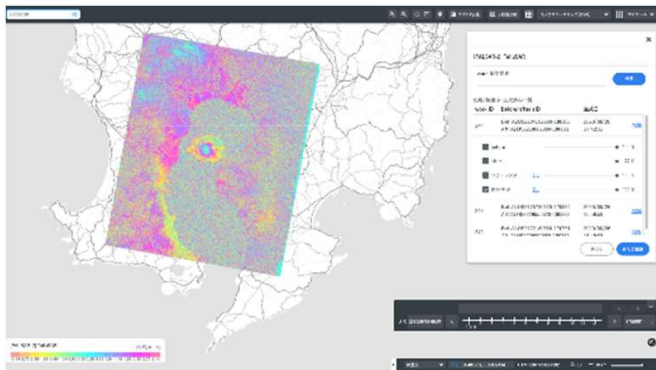
Ministry of the Environment, government of Japan decided to disseminate data of GSSAT series through satellite data hosting service of Tellus.



Software as a Service (SaaS)

This is a service that provides a web-based application.
Users need only an internet connection and a device: tablet etc., to use our service immediately.

TelluSAR



Tool for analyzing satellite SAR data.
API and add-in are available.

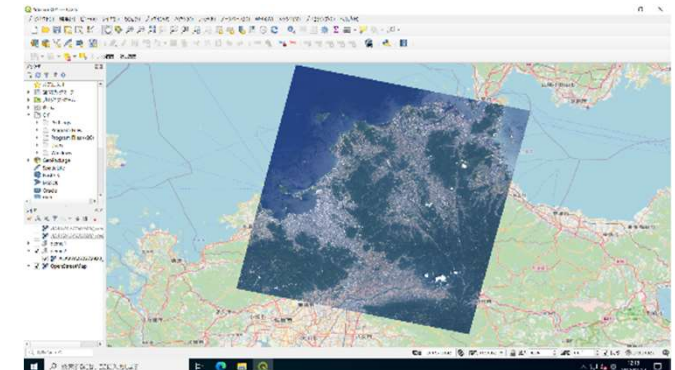
Tellus VPL

(Tellus Visualizer for Parking Lot)



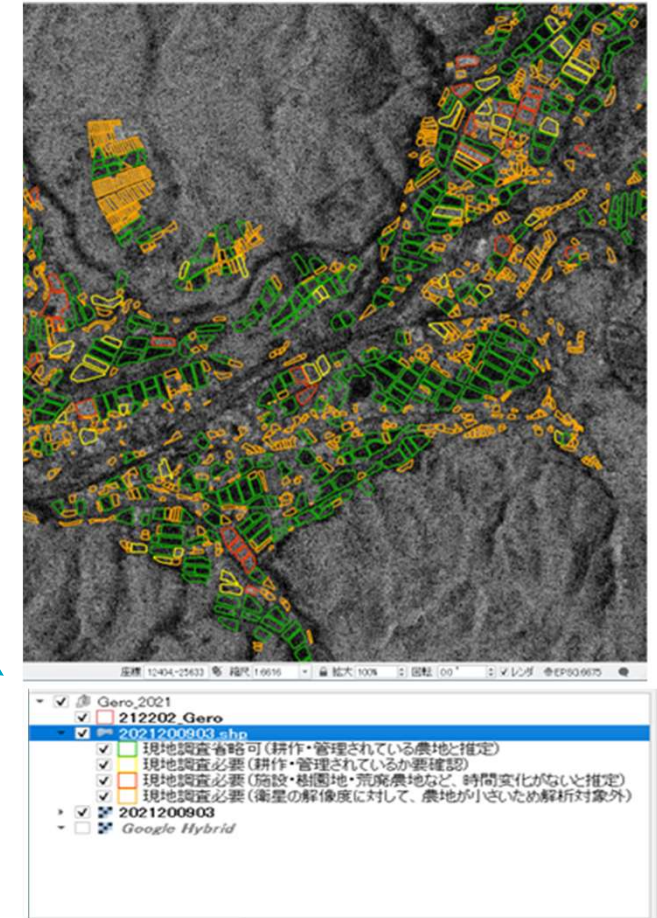
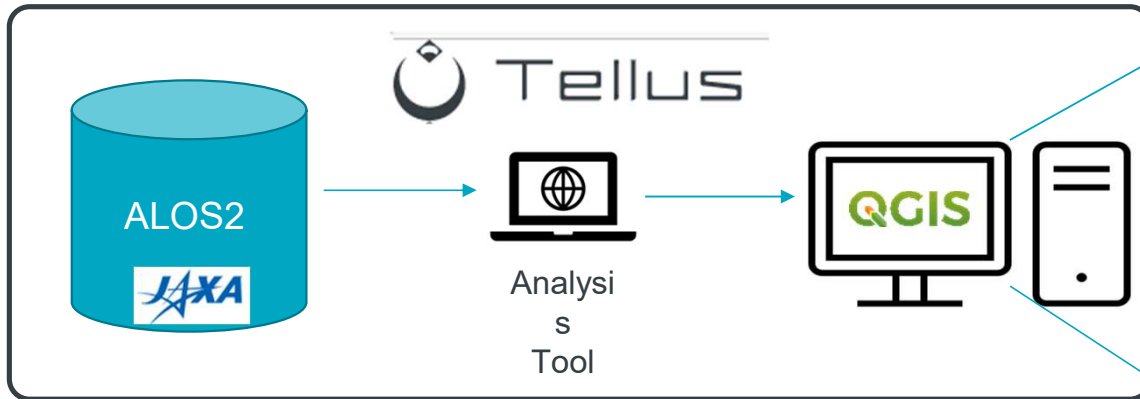
One of our free official tool that can identify the potential parking lots using satellite data.

Tellus Satellite Data Master + QGIS



QGIS on Tellus can provide satellite data, analysis tool and computing resources.

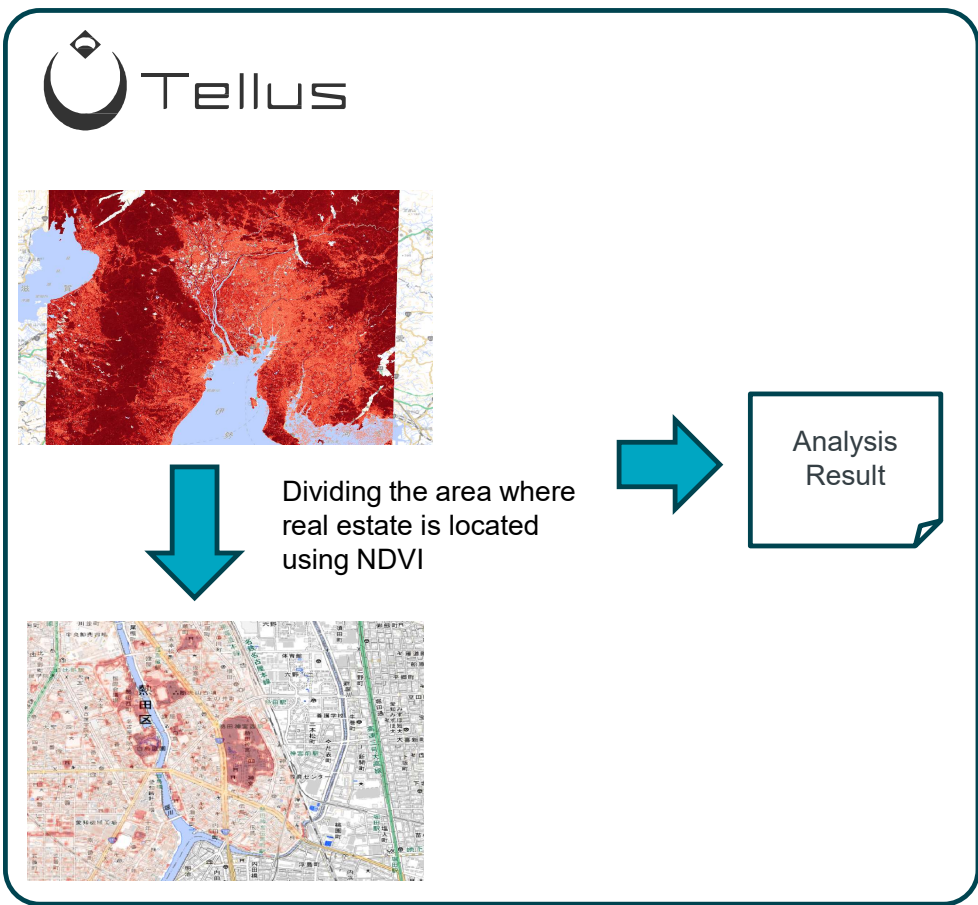
JAXA ALOS2 experiment



- Local government needs to check with the current status of farmland.
- Once end user can connect internet, they can identify the farmland where is well-maintain, not maintain and suspicious by using the ALOS2 data, special tool and QGIS on Tellus
- This experiment has been implemented by JAXA, RESTEC, Sagri inc. Gero City and Tellus(Sakura internet)

Made by Sakura Internet based upon JAXA's Presentation

A use case of real estate company



Deep Learning



Real estate search System (Web)



- Used as a search condition for location criteria
- Used as a recommendation factor for users.

- To enhance the fundamental function of Tellus
- To challenge our business internationally.
- To generate synergy with new technologies such as AI

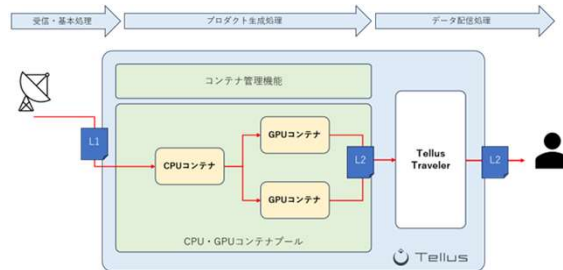
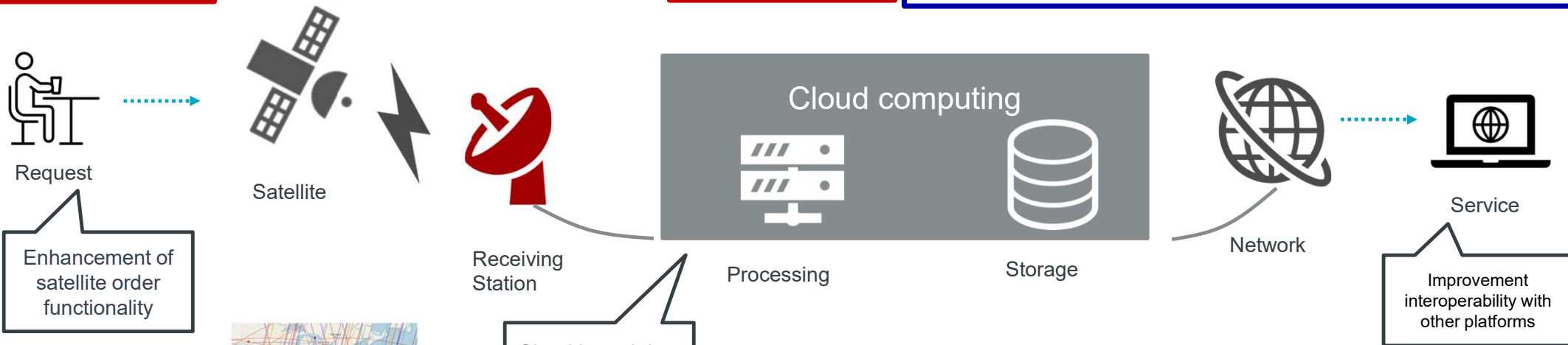
Enhancement of the fundamental function of Tellus



NEXT

NEXT

Done



AXELSPACE

PASCO
Surveying the Earth to Create the Future

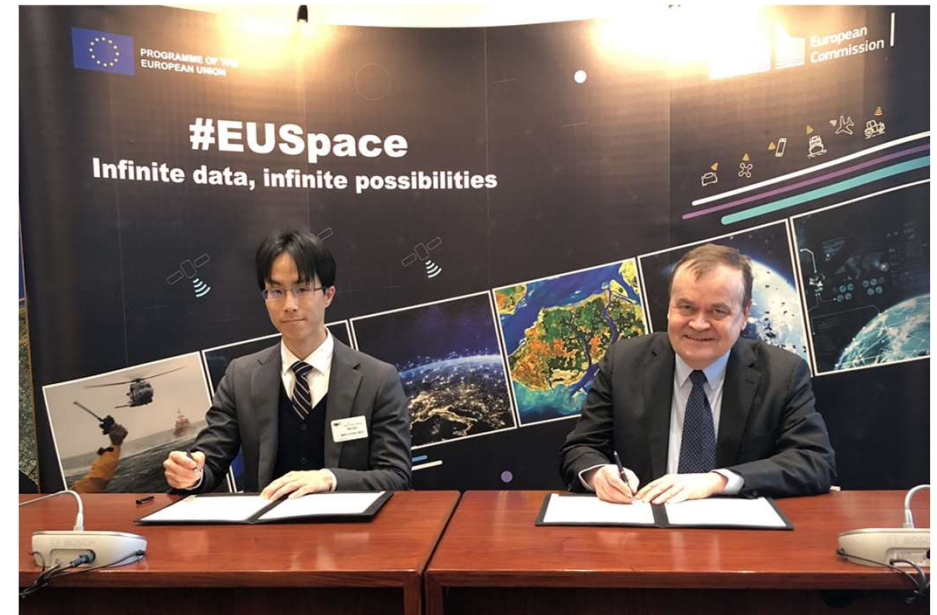
Synspective

iQPS

生きる、を支える科学技術
SCIENCE FOR RESILIENCE
NIED 防災科研

Highlights of the cooperation

1. Exchange data between the satellite data platform Tellus and the European Commission-operated Copernicus.
2. Encourage cooperation on data processing for common use and development of services in fields such as monitoring of marine and coastal areas, climate, water resource management, and disaster risk reduction.



https://www.meti.go.jp/english/press/2023/0118_003.html

Satellite data, GPU and AI



<https://www.sakura.ad.jp/corporate/information/newsreleases/2023/06/16/1968211860/>



<https://www.tellusxdp.com/en-us/>