



INFRASTRUCTURE TO STANDARDISE ACCESS TO EO DATA

Sebastian Chaoui

E: sebastian@arlula.com

M: +61 432 260 282

ABOUT ARLULA



**FOUNDED IN
2018**



**14,000+ TOTAL
USERS**



**IN 180+
COUNTRIES**



**200M+ KM2 OF EO
DATA DELIVERED**

Backed By



THE COMMERCIAL EO INDUSTRY IS LIMITED BY 3 CORE PROBLEMS

- Poor product delivery and data management infrastructure.
- Inconsistent commercial data standardisation.
- Difficult to navigate licensing limit commercial adoption of technology.



SATELLITE OPERATORS BUILD BESPOKE CLOUD INFRASTRUCTURE

- Building a custom EO data platform takes 6-12 months.
- Hiring and managing skilled engineers is costly and time-consuming.
- Custom infrastructure diverts focus from your strategic priorities.



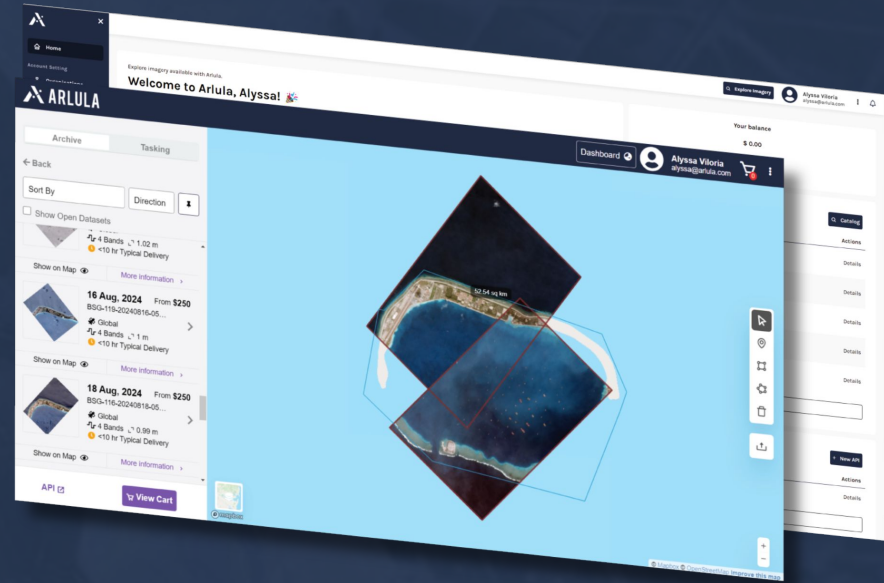
ORGANISATIONS STRUGGLE TO UTILISE EO DATA EFFECTIVELY

- Millions are spent annually on EO data that sits unused in the cloud.
- Data sharing is challenging due to security and license concerns.
- Technical teams face difficulties integrating data from multiple sources into workflows.



GEOSTACK SCALES YOUR ORGANISATIONS EO CAPABILITY

- Deploy on the cloud to manage your archive data and new tasking requests.
- Simple UI to share collections of EO data across organisations.
- Scalable STAC based APIs to integrate data feeds into new apps and workflows.



GEOSTACK SUPPORTS THE ENTIRE EO COMMUNITY

Government & Enterprise Customers

- Eliminates geospatial data silos.
- Improves shareability of large datasets.
- Easily Integrate EO data into new apps.

EO Satellite Operators

- Self service UI for tasking and archive.
- Eliminates the need to hire large ops and software teams.
- Out of the box API suite to scale data delivery.

ASA GRANT TO DEVELOP ARD TECHNOLOGY FOR COMMERCIAL EO



Australian
Space Agency

DATA INTEROPERABILITY & ARD

STANDARDISING METADATA

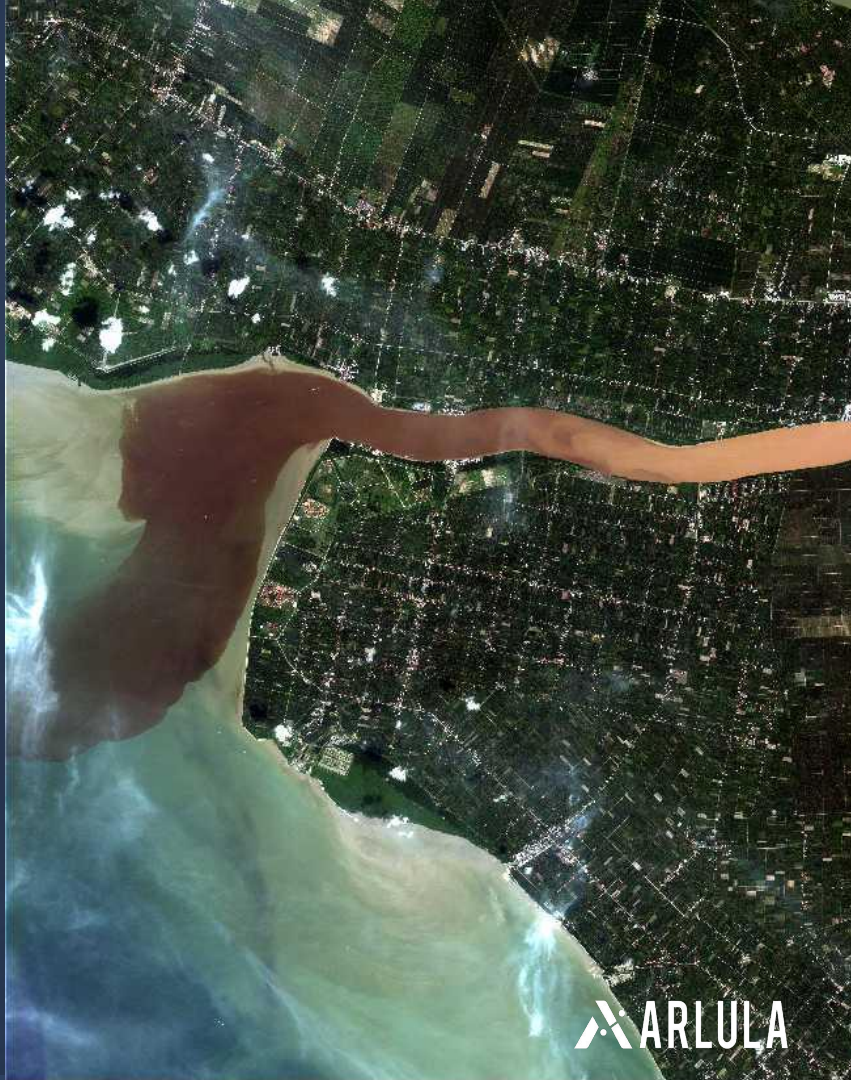
We aim to use existing standards to homogenise commercial EO metadata

FOCUS ON MS & HS DATA SOURCES

This funding will allow us to focus on MS and HS data sources.

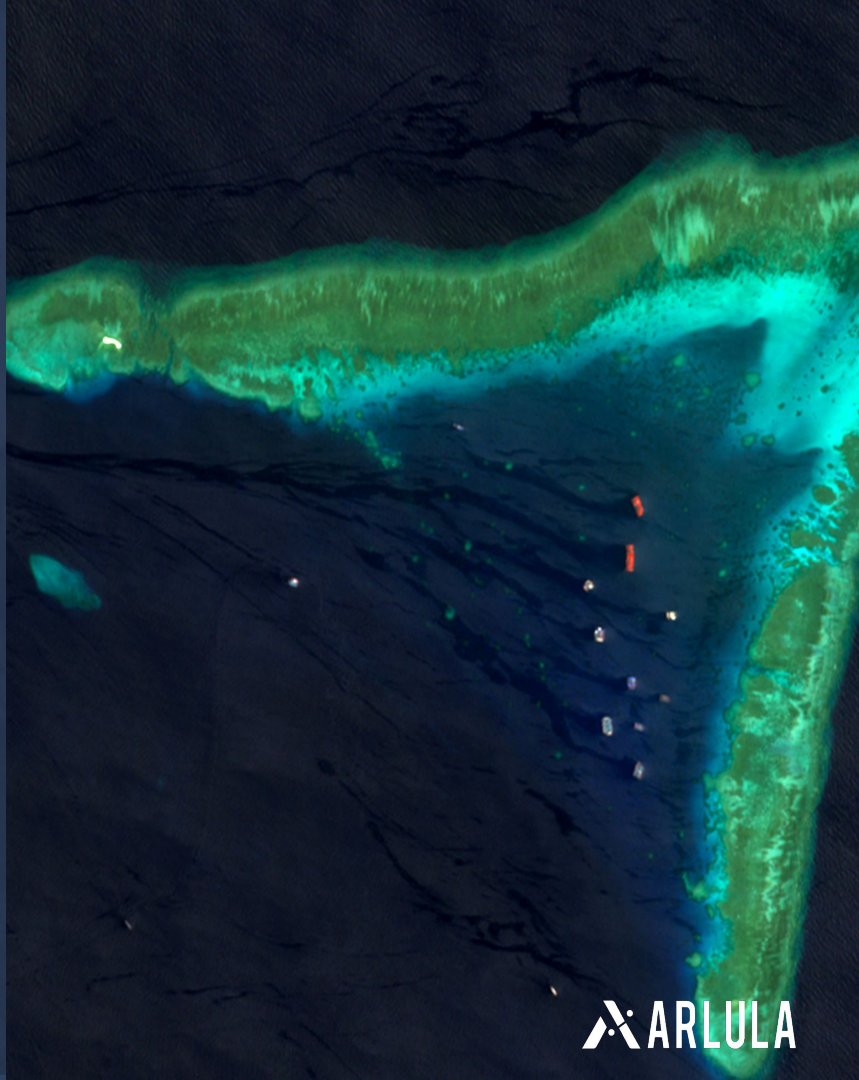
CARD4L

We are working with satellite operators to develop automated processing solutions to help them meet CARD4L requirements



ACTIVITY: SUPPORT COMMERCIAL EO

- What are the biggest problems with commercial EO datasets?
- What suggestions do you have for commercial EO data providers to improve data quality?
- What could your organisation do to help commercial EO improve their data quality and meet new standards?





THANKYOU

Sebastian Chaoui

E: sebastian@arlula.com

M: +61 432 260 282

