



EarthDaily Analytics Overview

WGCV-56 / LCI-VC-19

Presented by:
Tim Chan – Senior Technical Manager – Vancouver



Disclaimer

Confidentiality

This presentation is provided solely for the purpose of considering a potential transaction or business arrangement between the recipient, or the recipient’s organization or government agency, and EarthDaily Analytics Corp. and/or one of its subsidiaries or affiliates (collectively, the “Company”). By accepting this presentation, the recipient acknowledges and agrees that all of information contained herein is confidential and the exclusive property of the Company and the recipient will distribute, disclose and use such information only for its organization’s internal evaluation of a potential transaction or business arrangement with the Company. By accepting this presentation, the recipient acknowledges and agrees that it is not subject to any contractual or other obligation to disclose this presentation or the information contained herein to any other person or entity and that the recipient shall, and shall cause its directors, partners, officers, employees, attorney(s), agents and representatives to (a) maintain the information and data contained herein in the strictest of confidence and will not, under any circumstances whatsoever, reproduce this presentation, in whole or in part, or disclose any of the contents hereof or the information and data contained herein to any other person without the prior written consent of the Company, (b) upon completion of its evaluation, return or delete this presentation, and any other materials that the recipient may have received from the Company, and (c) promptly notify the Company and its respective representatives of any unauthorized release, disclosure or use of this presentation or the information contained herein. Furthermore, all or a portion of the information contained in this presentation may constitute material non-public information of the Company or other parties. By acceptance of this presentation, you acknowledge that applicable securities laws, among other prohibitions, restrict a person from purchasing or selling securities of publicly traded issuers, and from communicating such information to any other person under circumstances in which it is reasonably foreseeable that such person is likely to purchase or sell such securities.

Forward-Looking Statements

Certain statements included in this presentation that are not historical facts may constitute “forward-looking statements” within the meaning of in applicable Canadian and United States securities laws and regulations. Forward-looking statements generally are accompanied by words such as “believe,” “may,” “will,” “estimate,” “continue,” “anticipate,” “intend,” “expect,” “should,” “would,” “plan,” “predict,” “potential,” “seem,” “seek,” “future,” “outlook,” and similar expressions that predict or indicate future events or trends or that are not statements of historical matters. These forward-looking statements include, but are not limited to, statements regarding estimates and forecasts of business, financial and other performance metrics and milestones, and projections of market opportunity. These statements are based on various assumptions, whether or not identified in this presentation, and on the current expectations of the Company’s management and are not predictions of actual performance. These forward-looking statements are provided for illustrative purposes only and are not intended to serve as, and must not be relied on by any person as, a guarantee, an assurance, a prediction or a definitive statement of fact or probability. Actual events and circumstances are difficult or impossible to predict and will differ from assumptions. Many actual events and circumstances are beyond the control of the Company.

These forward-looking statements are subject to a number of risks and uncertainties, including changes in domestic and foreign business, market, financial, political and legal conditions; risks that any required consents or regulatory approvals are not obtained, are delayed or are subject to unanticipated conditions that could adversely affect the Company; the occurrence of any event, change or other circumstance that could give rise to the termination of material agreements to which the Company is party; difficulties in the Company’s employee retention; litigation that may be instituted against the Company or its directors or officers in relation to the Company’s business; risks relating to the uncertainty of the projected financial information with respect to the Company; the Company’s ability to achieve any level of revenue, gross profit or EBITDA margin; risks related to the growth of the Company’s business and the timing of expected business milestones; the effects of competition on the Company’s future business; the effects of failure of the Company to comply with governmental rules and regulations or changes in regulatory requirements; the ability of the Company to obtain financing; and the impact of the global COVID-19 pandemic on any of the foregoing risks. If any of these risks materialize or the assumptions in this presentation prove incorrect, actual results could differ materially from the results implied by these forward-looking statements. There may be additional risks that the Company cannot presently anticipate or that the Company currently believes are immaterial that could also cause actual results to differ from those contained in the forward-looking statements. In addition, forward-looking statements reflect the Company’s expectations, plans or forecasts of future events and views as of the date of this presentation. The Company anticipates that subsequent events and developments will cause the Company’s assessments to change. However, while the Company may elect to update these forward-looking statements at some point in the future, the Company specifically disclaims any obligation to do so, except as required by law. These forward-looking statements should not be relied upon as representing the Company’s assessments as of any date subsequent to the date of this presentation. Accordingly, undue reliance should not be placed upon the forward-looking statements.

Informational Purposes Only; No Representations

This presentation has been provided for informational purposes only and does not constitute or give rise to any obligation, express or implied, of any party to negotiate, proceed with or consummate any transaction, and neither this presentation nor its content shall form the basis of any contract. The Company does not make any representation or warranty, express or implied, as to the accuracy or completeness of this document or any other information (whether written or oral) that has been or will be provided to you. Nothing contained herein or in any other oral or written information provided to you is, nor shall be relied upon as, a promise or representation of any kind by the Company. Without limitation of the foregoing, the Company expressly disclaims any representation regarding any projections concerning future operating results or any other forward-looking statement contained herein or that otherwise has been or will be provided to you. The Company shall not be liable to you or any other person for any information contained herein. You will be entitled to rely solely on the representations and warranties made to you by the Company or a potential counterparty in a definitive written agreement involving the Company, when and if executed, and subject to any limitations and restrictions as may be specified in such definitive agreement. No other representations and warranties will have any legal effect. This presentation should not be construed as legal, business or tax advice and any parties viewing it should consult with their own advisors as to the legal, tax, business, financial and other aspects of this presentation.

Use of Projections

This presentation contains financial forecasts. The Company’s independent auditors have not studied, reviewed, or performed any procedures with respect to the projections for the purpose of their inclusion in this presentation, and accordingly, they have not expressed an opinion or provided any other form of assurance with respect thereto for the purpose of this presentation. These projections are for illustrative purposes only and should not be relied upon as being necessarily indicative of future results. The assumptions and estimates underlying the prospective financial information are inherently uncertain and are subject to a wide variety of significant business, economic and competitive risks and uncertainties that could cause actual results to differ materially from those contained in the prospective financial information, including those described above under “Forward-Looking Statements.” Inclusion of the prospective financial information in this presentation should not be regarded as a representation by any person that the results contained in the prospective financial information will be achieved.

Industry and Market Data

Portions of this presentation also contain or are based on statistical data, estimates and forecasts that are based on independent industry publications or other publicly available information, as well as other information based on our internal sources. This information involves many assumptions and limitations, and you are cautioned not to give undue weight to such information. The Company has not independently verified the accuracy or completeness of the information contained in the industry publications and other publicly available information. Accordingly, the Company does not make any representation as to the accuracy or completeness of that information nor does it undertake to update such information after the date of this presentation. In addition, this presentation does not purport to be all-inclusive or to contain all of the information that may be required to make a full analysis of the Company. You should make your own evaluation of the Company and of the relevance and adequacy of the information and should make such other investigations as you deem necessary.

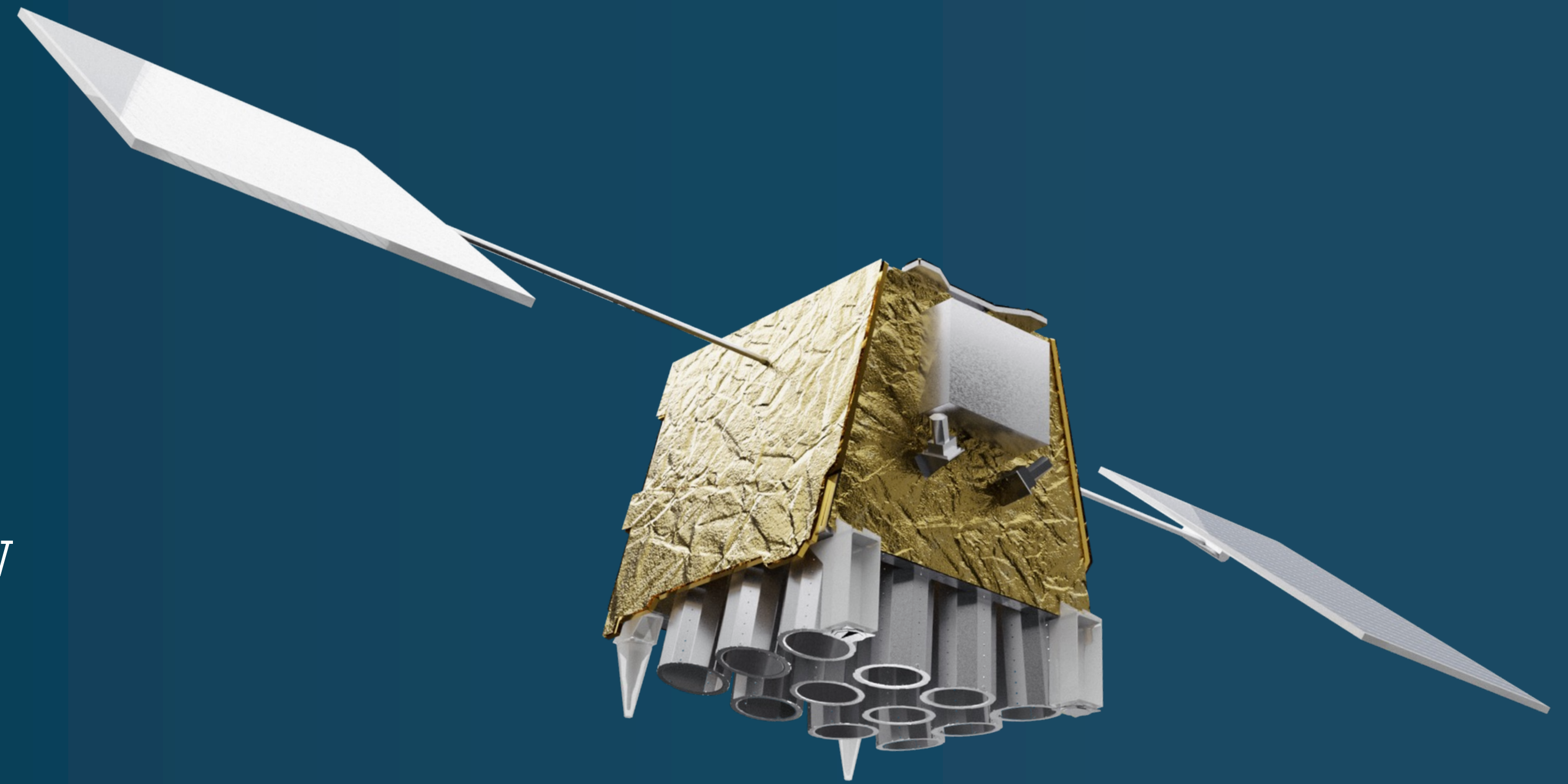
Trademarks

This presentation contains trademarks, service marks, trade names and copyrights of the Company, the Company’s subsidiaries and other companies, which are the property of their respective owners.

What we are covering in today's session...

High-level overview:

1. EarthDaily Constellation Overview
2. Where we are now
3. EarthDaily and CEOS



What Makes Our Constellation Different

The intelligence infrastructure for a changing planet.

EarthDaily delivers continuous, calibrated insight that enables leaders to **see change, understand context, and predict outcomes with confidence.**



Daily Revisit:

Everyday imaging, optimized for change detection & predictive analytics



Global Landmass & Coastal Coverage:

Systematic global coverage global landmass daily to reveal patterns of change at scale



22 Spectral Bands: Superspectral

Data spanning visible, shortwave infrared & thermal ranges enables a wide variety of scientific and commercial uses







Compounding Archive:

Ongoing data collection enables unique, non-replicable advantage over time



Satellite Sensor Capabilities

EarthDaily Constellation

-  5m GSD
-  Worldwide Coverage
-  Daily Frequency
-  Advanced Cloud Mask


*Analysis Ready Cloud Optimized

Category	Band	Color
Visible	Coastal	Purple
	Blue	Blue
	Aqua	Teal
	Green	Light Green
	Yellow	Yellow
Near Infrared	Red	Red
	Red Edge 1	Orange
	Red Edge 2	Dark Orange
	Red Edge 3	Dark Orange
	Near Infrared	Brown
	Water Vapour 1	Light Blue
Shortwave Infrared	Water Vapour 2	Light Blue
	SWIR 1	Purple
	Cirrus	White
	SWIR 2	Grey
	Methane 1	Yellow
	Methane 2	Light Yellow
Thermal Infrared	Wildfire	Orange
	TIR 1	Light Blue
	TIR 2	Light Blue
	TIR 3	Light Orange
	TIR 4	Light Green

EDC Imagery Products



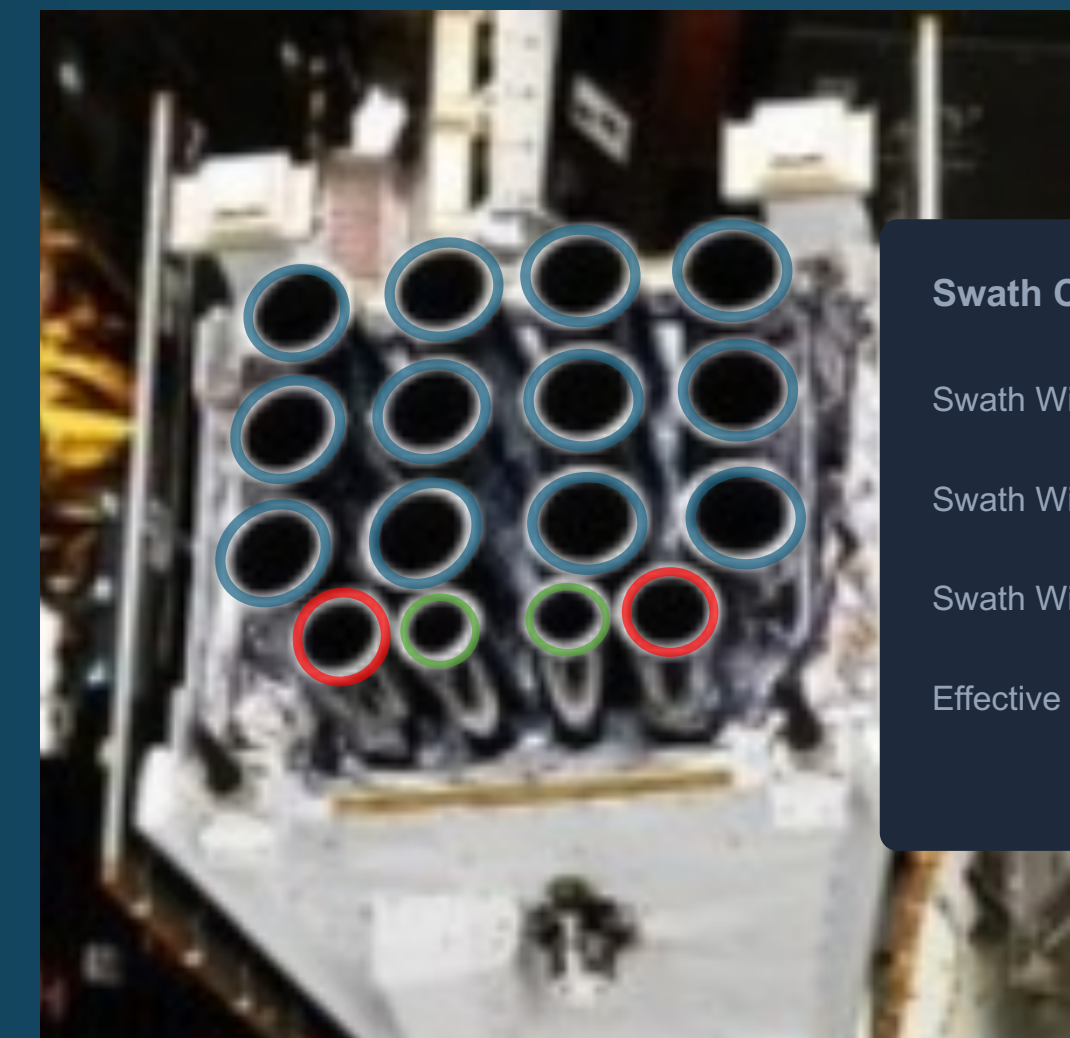
AiRD



Maritime



Science



Swath Configuration

Swath Width (VNIR)

Swath Width (SWIR)

Swath Width (TIR)

Effective Swath/Sat

x10

AiRD

Built for AI to unlock deep, actionable insights. Train models at planetary scale or build AI-driven apps for change detection. Get out-of-the-box intelligence for faster risk hedging and opportunity spotting across industries.

Spectral Bands

9-band imagery
(Blue, Green, Aqua, Yellow, Red, Red-Edge1, Red-Edge 2, Red Edge 3, Near-Infrared)



Precise geometric and atmospheric correction

- ✓ 5m Resolution
- ✓ L2A
- ✓ 16 Bit
- ✓ Cloud Mask

Why CEOS-ARD Certification Matters

Why We Appreciate and Use CEOS-ARD Certification



It helps turn EO data into a trusted, interoperable, **analysis-ready service**, supporting faster customer adoption and stronger time-series workflows.

Recognized standard. Better usability. Greater confidence.

Trusted scientific standard

CEOS-ARD criteria reinforce confidence in calibration, metadata quality, and downstream fitness for use.

Interoperable by design

Harmonized datasets fit more smoothly into multi-source, cross-mission, and time-series workflows.

Lower barriers to use

Analysis-ready structure reduces preprocessing and helps more users get to insight with less EO-specific preparation.

How EarthDaily uses it

We package CEOS-aligned data for plug-and-play delivery, faster onboarding, and scalable change detection analytics.

EARTH DAILY

AIRD

The Value of Achieving CEOS-ARD Certification

Maximizing the Usability, Impact, and Reach of Earth Observation Data

Empowering End-Users and Expanding Market Reach

Eliminates Technical Barriers: Opens up space-based data to a broader audience—including local, regional, and national decision-makers—who may lack the specialized expertise, computing infrastructure, or high internet bandwidth previously required to process raw satellite data.

Drastically Reduces Preparation Time: Relieves even sophisticated Earth Observation (EO) users from the time-consuming burden of data preparation. By minimizing preprocessing needs, users can redirect their resources toward immediate, high-value analysis and insights.

Ready for Immediate Use: Ensures that datasets are processed and organized to a standard that allows for “plug-and-play” analysis from the moment they are downloaded or accessed in the cloud.

© EarthDaily Analytics, 2026. All Rights Reserved.

Empowering End-Users and Expanding Market Reach

Seamless Interoperability
Guarantees that certified data is harmonized, enabling smooth integration for complex time-series analysis and cross-compatibility with other diverse satellite datasets.

Standardized Scientific Excellence:
Aligns your data products with rigorously defined CEOS “Threshold” and “Goal” requirements. This covers critical specifications including general metadata, per-pixel metadata, radiometric/atmospheric corrections, and geometric corrections.

Verified Trust and Transparency:
The formal self-assessment and peer-review process provides a recognizable seal of approval. It builds confidence among global users that the data strictly complies with internationally recognized calibration and metadata criteria.

Driving Strategic Global Impact

Accelerates Critical Decision-Making: Facilitates faster and more effective utilization of the growing volume of space-based data, driving real-world actions in climate monitoring, agriculture, disaster response, and urban planning.

Supports Major Global Initiatives: Directly answers the call from countries and international organizations for standardized data, actively contributing to the success of regional and global initiatives supported by the Committee on Earth Observation Satellites (CEOS).

Future-Proofs Data Assets: As global satellite data volumes grow exponentially, CEOS-ARD compliance ensures that your data sets remain manageable, discoverable, and highly relevant rather than getting lost behind a barrier of processing complexity.

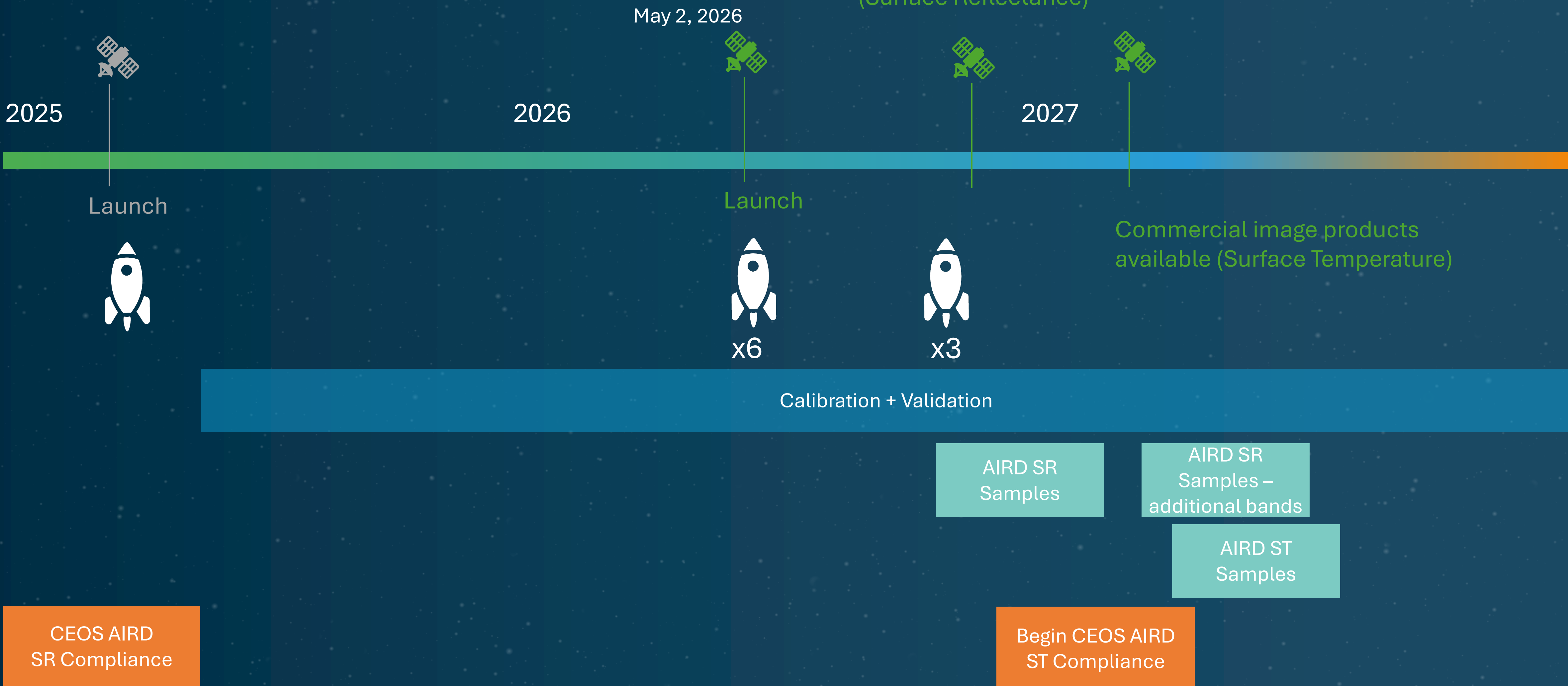
**** Note: Achieving CEOS-ARD status signals a transition from merely providing “raw data” to delivering a highly accessible “data service” that actively accelerates global science and decision-making.

Experience AI-Ready Earth Observation Data
Any question? Our experts are happy to help.

© EarthDaily Analytics, 2026. All Rights Reserved.

Timeline

EDC-01
EDC-02-07



Surface Reflectance Validation

Periodic AERONET and RadCalNet validation over

- 380 active AERONET sites
- 3 RadCalNet sites

Measuring

- Atmospheric retrieval
- Surface reflectance noise and consistency



EarthDaily and CEOS-ARD – Surface Reflectance

- EarthDaily Constellation SR datasets were approved in late 2025
- In late 2026 we intend to provide updated samples with data from calibrated satellites
- We also anticipate in the future providing variations of our SR datasets with additional bands and format updates (such as STAC 1.1)
- What is the process for handling updates?

EarthDaily and CEOS-ARD – Surface Reflectance Goal Requirements

We remain interested in working towards assessment at the Goal level, including:

- Measurement normalization (terrain and BRDF correction) and associated metadata
- Radiometric accuracy metrics (derived from the validation process described earlier)
- Inclusion of the EarthDaily Constellation in the CEOS Missions, Instruments, and Measurements Database
- Additional documentation
 - We believe this is largely covered by the documentation that accompanied our earlier samples

EarthDaily and CEOS-ARD – Surface Temperature and Aquatic Reflectance

EarthDaily Constellation Surface Temperature datasets will start to become available in early 2027

- Start certification process around the beginning of 2027
- Are any updates to the ST spec anticipated in this timeframe?

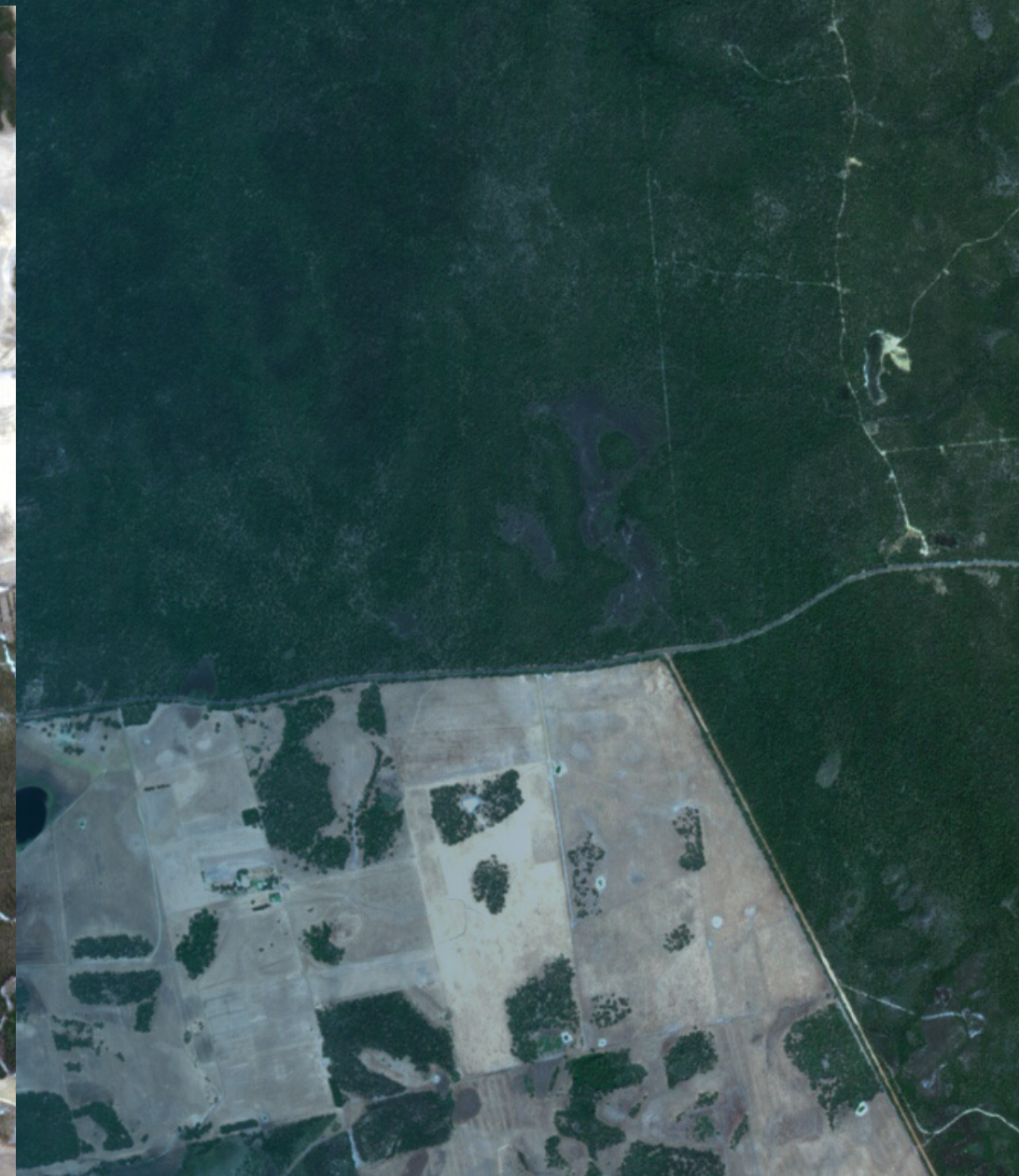
EarthDaily has begun exploring Aquatic Reflectance datasets and will be pursuing compliance in the near future



EARTH
DAILY

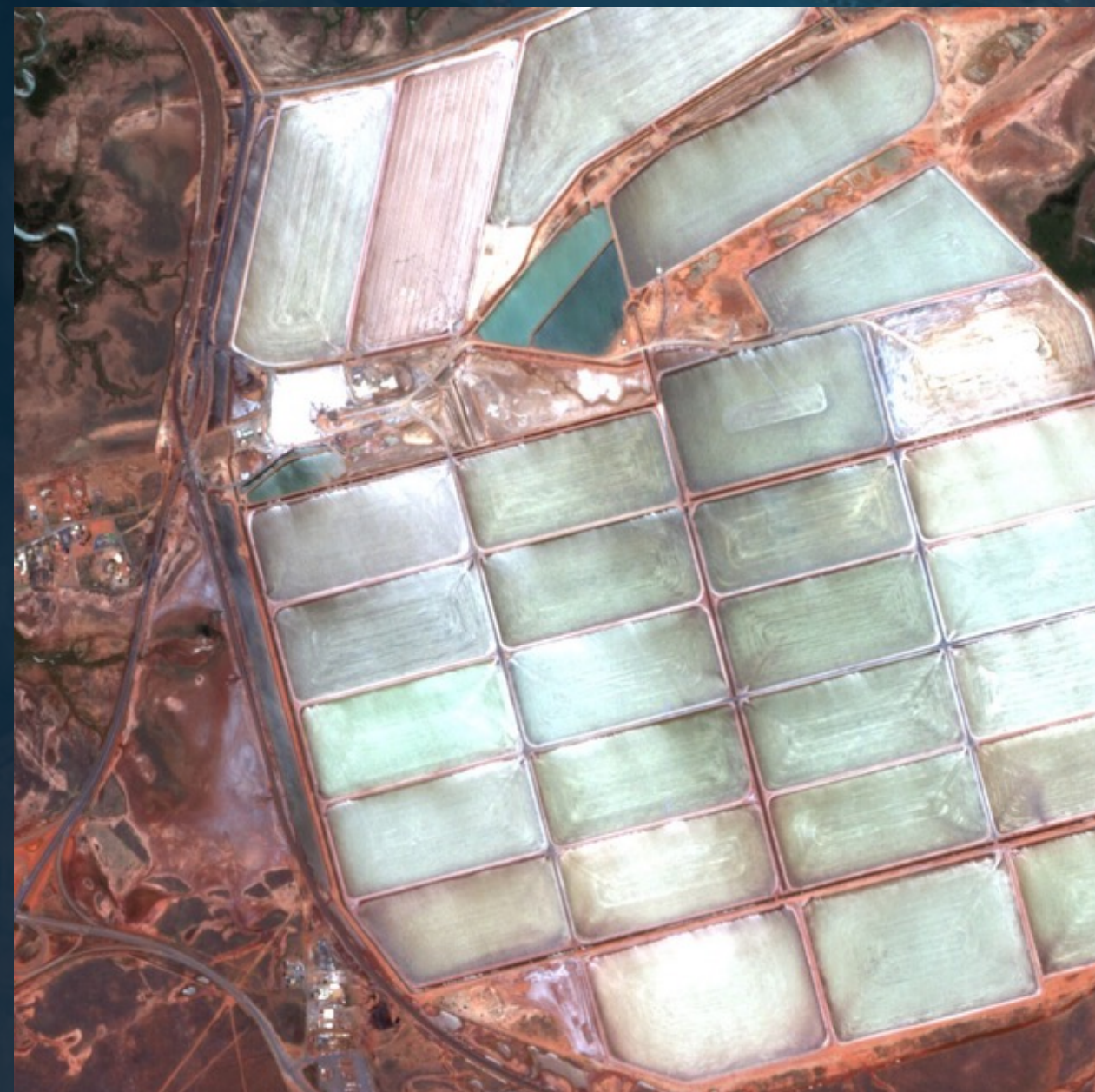
AGRICULTURE MONITORING

The EarthDaily Constellation provides daily global coverage of vegetation indices with high signal-to-noise ratios.



PORT HEDLAND, WESTERN AUSTRALIA

An industrial port complex centered one of the world's largest bulk export ports, with ship channels, heavy mineral handling infrastructure, and adjacent salt evaporation ponds visible inland.



DESERT EDGE URBAN DEVELOPMENT

A rapidly expanding desert settlement characterized by planned residential grids, major highway interchanges, and surrounding sand dune landscapes.





EARTH DAILY

www.earthdaily.com