



Committee on Earth Observation Satellites

# Synergy with CEOS

## WGDisasters

National Aeronautics and Space Administration

CEOS WGCapD-8 Annual Meeting

#40

Working Group on

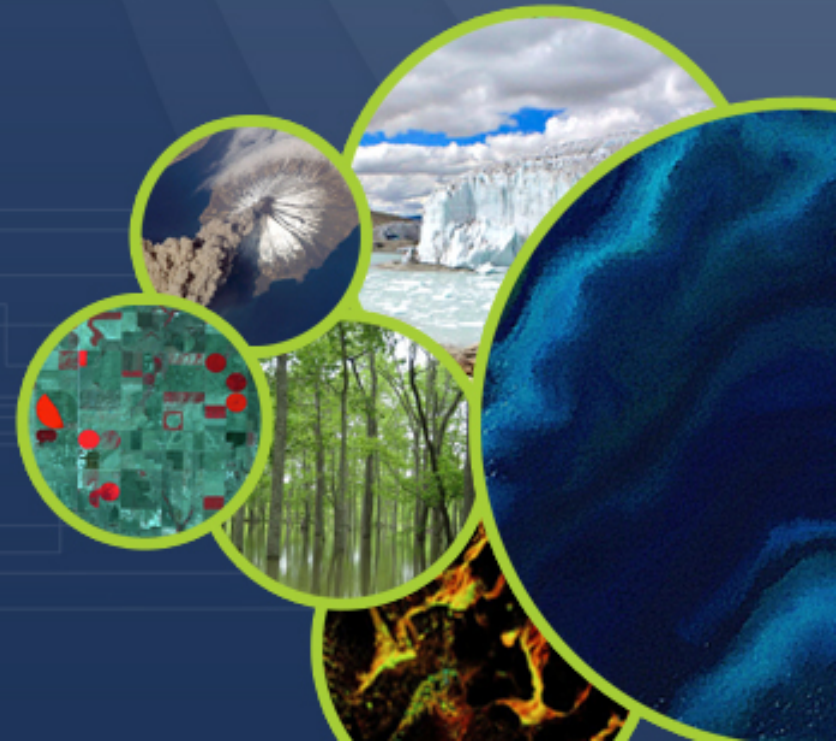
Capacity Building & Data Democracy

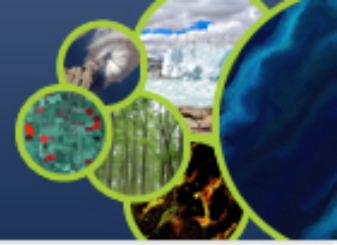
Indian Institute of Remote Sensing

Indian Space Research Organisation

Dehradun, India

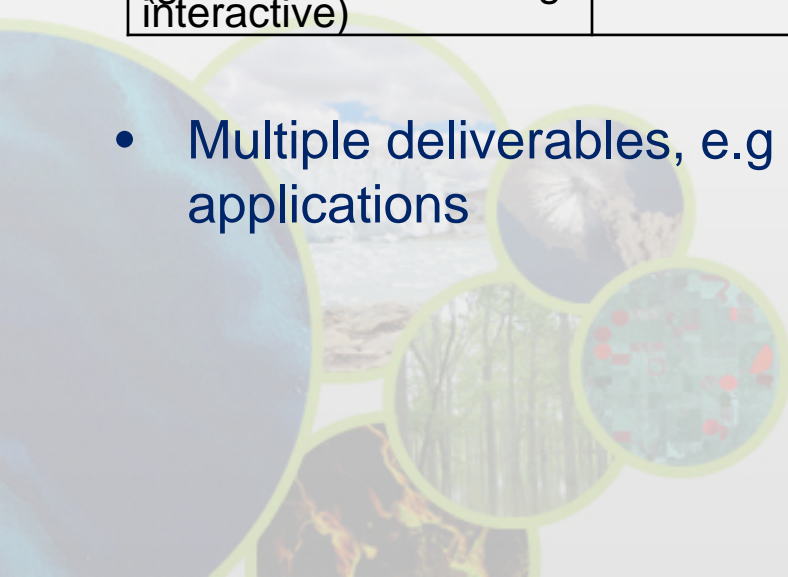
March 06<sup>th</sup> – 08<sup>th</sup>, 2019



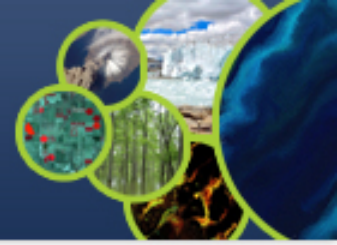


<p>CB-29 Conduct global capacity building courses through Webinar on Asia-GEOGLAM, SAR Missions – Present and future, <b>Disaster Risk Reduction (UNOOSA)</b> (global interactive) training-</p>	<p>Q3 2019</p>	<p>ISRO with support of NASA, DLR and other theme specialists will plan to conduct these webinar series on these specialised topics.</p>	<p>WGCapD</p>
--	----------------	--	---------------

- Multiple deliverables, e.g SAR training, have disasters applications

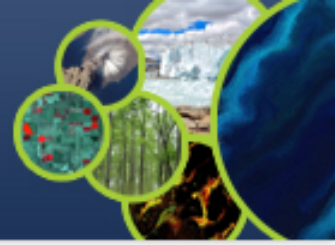


# Examples of WGDisasters deliverables related to WGCapD



Objective/Deliverable	Background Information	Comments
DIS-10: Implementation of data coordination for the GEO-GNSL initiative	GSNL is a GEO initiative	Capacity building is a main component of the GSNL initiative. See the recent webinar organized by Iceland Supersite  Need to share capacity building activities with WG CapD.
DIS-12: Report on survey of donors for post-2017 operation of a Recovery Observatory	RO is on going in Haiti after Matthew hurricane.	RO team is developing a capacity building plan with Haitians  Need capacity building on sar processing, SAR and optical data synergies and land change/land use maps.  Review the plan with WG capD?
DIS-18: Volcano Demonstrator Reports	Volcano demonstrator is preparing an implementation plan and capacity building is one component	Volcano team could identify capacity building needs to share with WG CapD in order to understand potential synergies with WG Cap D
DIS-19: Expanding the use of EO data for monitoring, measuring and understanding disasters	Develop e-collaboration with EO practitioners to promote further utilization of CEOS data	

- Discussion: How to communicate, coordinate, collaborate?



- SAR data added to weather service GEO-LEO products to improve flood monitoring and response
- Capacity building needed when/if concept of operations and processes are worked out

