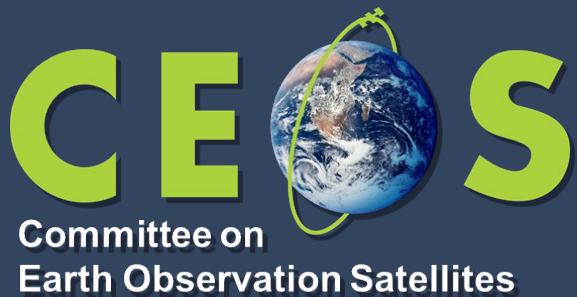


# AEM

AGENCIA ESPACIAL  
MEXICANA

---



Ph.D. Adrian Guzman  
MEXICAN SPACE AGENCY  
Agencia Espacial Mexicana (AEM)  
CEOS WG Disasters Meeting 18  
Nice, France – Université Côte d’Azur (UCA)  
3rd - 7th October 2022

❖ **Mexican Space Agency is Inaugurating Two New Regional Aerospace Development Center**

**HIGHLIGHTS:** *Digital Image Processing UNIT based at Atlacomulco Regional Center works with Downloaded Images from AQUA, TERRA y LANDSAT8 – Telemetry has been managed with help of Pinkmatter Solutions and AEM-INEGI has signed a contract agreement for access data of LANDSAT9.*

**HIGHLIGHTS:** *New Satellite GXIBA from UPAEP and UNOOSA – Kibo Program relies in a Cooperative Agreement between AEM and JAXA.*



# AEM Regional Aero-Space Centers



 **COMUNICACIONES** | **AEM**  
SECRETARÍA DE INFRAESTRUCTURA, COMUNICACIONES Y TRANSPORTES | AGENCIA ESPACIAL MEXICANA

Centro Regional de Desarrollo Espacial de Zacatecas

**AEM**  
AGENCIA ESPACIAL  
MEXICANA

---

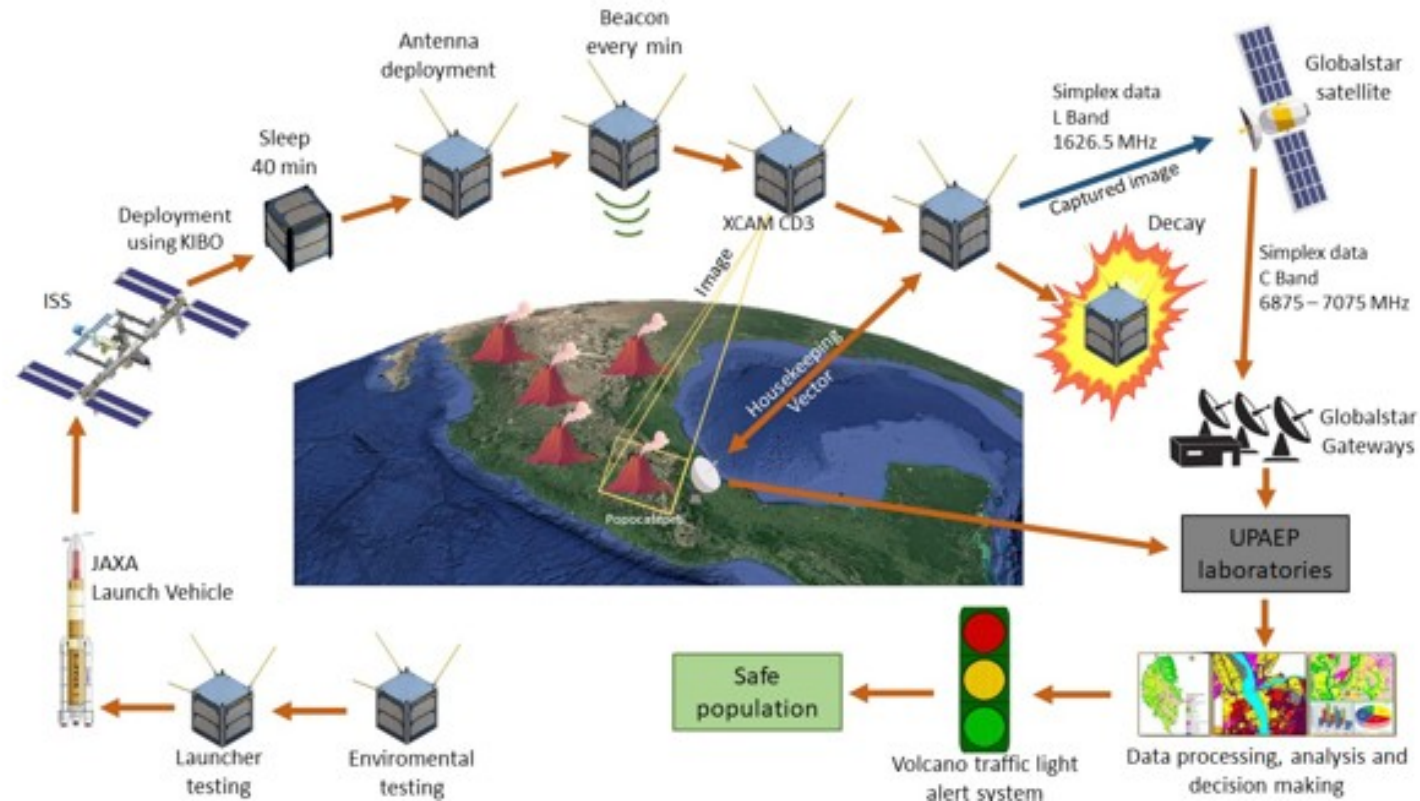


 **COMUNICACIONES** | **AEM**  
SECRETARÍA DE INFRAESTRUCTURA, COMUNICACIONES Y TRANSPORTES | AGENCIA ESPACIAL MEXICANA

Centro Regional de Desarrollo Espacial de Atiacomulco, Edo. México



## Concepto de Operación: Etapa 1 satélite "Gxiba-1"





# International Charter Space and Major Disasters

Apoyo basado en plataformas satelitales  
para desastres en todo el mundo



**COMUNICACIONES**  
SECRETARÍA DE INFRAESTRUCTURA, COMUNICACIONES Y TRANSPORTES

**AEM**  
AGENCIA ESPACIAL  
MEXICANA



**2022** Ricardo Flores  
Año de Magón  
PRECURSOR DE LA REVOLUCIÓN MEXICANA

# Disaster Charter



<b>ABAE</b>	<b>VRSS-1, VRSS-2</b>
<b>CNES</b>	<b>PLEIADES, SPOT</b>
<b>CNSA</b>	<b>CBERS-4, GF-1, GF-2, GF-3, GF-4, FY-3C, JILIN-1, OVS-1, OHS-2, Beijing-2</b>
<b>CONAE</b>	<b>SAOCOM-1A</b>
<b>CSA</b>	<b>RCM-1, RCM-2, RCM-3</b>
<b>DLR</b>	<b>TerraSAR-X/TanDEM-X</b>
<b>DMC</b>	<b>UK-DMC2, Alsat-B</b>
<b>ESA</b>	<b>Sentinel-1, Sentinel-2</b>
<b>EUMETSAT</b>	<b>Meteosat, Metop</b>
<b>ISRO</b>	<b>Cartosat-2, Resourcesat-2, Resourcesat-2A</b>
<b>INPE</b>	<b>CBERS-4, CBERS-4B</b>
<b>JAXA</b>	<b>ALOS-2, KIBO HDTV-EF</b>
<b>KARI</b>	<b>KOMPSAT-2, KOMPSAT-3, KOMPSAT-3A, KOMPSAT-5</b>
<b>NOAA</b>	<b>POES, SUOMI-NPP, GOES</b>
<b>PLANET</b>	<b>PlanetScope</b>
<b>ROSCOSMOS</b>	<b>RESURS-DK, METEOR-M, KANOPUS-V, KANOPUS-V-IK, RESURS-P</b>
<b>UAESA</b>	<b>DubaiSat-2, Khalifasat</b>
<b>USGS</b>	<b>Landsat-7, Landsat-8, WorldView, Geoeye</b>

**INTERNATIONAL CHARTER SPACE & MAJOR DISASTERS**  
A worldwide collaboration through which satellite data are made available for the benefit of disaster management

**+750** ACTIVATIONS    **+130** COUNTRIES    **17** CHARTER MEMBERS

**+270** SATELLITES    **+35** CONSTELLATIONS    **24/7** OPERATING 24 HOURS A DAY 7 DAYS A WEEK

**20 OCT 2000** FOUNDED BY ESA, CNES AND CSA ON 20 OCTOBER 2000    **+20** SUPPORTED BY MORE THAN 20 INTERNATIONAL ORGANISATIONS

MORE THAN 80 NATIONAL USERS FROM OVER 80 COUNTRIES CAN REQUEST DATA FROM THE CHARTER. FIND OUT HOW TO REGISTER THROUGH UNIVERSAL ACCESS: [disasterscharter.org/web/guest/how-to-register-as-a-user](http://disasterscharter.org/web/guest/how-to-register-as-a-user)

# KARI-AEM Potential Collaboration Projects based on KARIST



**COMUNICACIONES**  
SECRETARÍA DE INFRAESTRUCTURA, COMUNICACIONES Y TRANSPORTES



**2022** Ricardo Flores  
Año de Magón  
PRECURSOR DE LA REVOLUCIÓN MEXICANA

# KARI International Space Training (KARIST)

18 lectures (~15hours) provided by KARI specialists

- GEO Satellite Systems
- Satellite Communications and Ground Systems
- Satellite Integration & Test
- Space Exploration
- SAR applications (EO)
- AI based satellite applications
- Sounding Rockets & Space Launch Vehicles
- Satellite Systems Engineering
- Orbit Mechanics
- International Cooperation Development Programs





- ESA
- CNES
- CSA
- NOAA
- ISRO
- CONAE
- JAXA
- USGS
- UKSA/DMC*i*
- CNSA
- DLR
- KARI
- INPE
- EUMETSAT
- ROSCOSMOS
- ABAE



Centro Regional de Desarrollo Espacial de Atlacomulco, Edo. México


Website Introduction.docx

Buscar

CEOS WGD Wildfire Pilot

Archivo Inicio Insertar Presentación Referencias Revisar Vista Ayuda ¿Qué deseas hacer? Edición Comentarios Ponerse al día Conversación Compartir Copiar vínculo Cerrar

Actividad Chat Equipos Archivos



The Global Wildfire Information System (GWIS) Current Situation Viewer.

Almost all applications for wildfire monitoring products are derived from EO systems designed for general purposes. Exploiting these systems for disaster response and management is problematic, largely due to the lack of standardization in EO wildfire products leading to slow adoption rates. Global coordination of the mid- and up-stream wildfire EO initiatives would enable the development of virtual constellations for pre-fire, active fire, and post-wildfire monitoring, with standardized processing and product delivery, ensuring maximum value to emergency management from EO systems and an efficient adaptation to the increasing threat of wildfires driven by climate change.

### Wildfire Pilot

The CEOS Working Group Disasters Wildfire Pilot aims to provide a fundamental basis for defining global priorities for active-fire monitoring and characterization.

### Objectives

1. Conduct a detailed inventory and gap analysis of existing and proposed EO systems suitable for global active-fire monitoring (considering climate change driven fire regime changes and projected mission life spans)
2. Conduct a detailed analysis of global stakeholders and end-users of active-fire EO data
3. Define targeted user requirements for active-fire remote sensing systems for the disaster mitigation applications
4. Propose a way forward in coordinating global wildfire monitoring activities

### Outcomes

1. Explore existing and anticipated gaps in wildfire EO capabilities
2. Identify the global community of wildfire stakeholders and end-users, and

Página 1 de 4 664 palabras inglés (Canadá) Sugerencias del editor: mostrando

100% Ajustar Proporcional comentarios a Microsoft

04:36



Mexican Space Agency

### Access to the platform

Username

Password

[Log in](#)

[Forgotten your username or password?](#)

[Log in as a guest](#)



#### GALILEO

European Global  
Satellite-Based  
Navigation  
System



#### COPERNICUS

The European  
Earth  
Observation  
Programme



#### EGNOS

The European  
Geostationary  
Navigation  
Overlay Service



#### GOVSATCOM

The European  
Union  
Governmental  
Satellite  
Communication

Course categories



## Galileo Information Centre for Mexico, Central America and the Caribbean

The **Galileo Information Centre for Mexico, Central America and the Caribbean** is the information centre on the technologies and programmes of European Global Navigation Satellite Systems (EGNSS). We provide information, training and support to the satellite navigation industry in Mexico, Central America and the Caribbean.

### European space ecosystem

The Centre complements the institutional support granted by the European Union to the Space ecosystem through:

- [EU Space User Consultation Platform - Aviation & Drones](#)
- [EU Space User Consultation Platform - Maritime & Fisheries](#)
- [EU Space User Consultation Platform - Emergency Management & Humanitarian Aid](#)
- [EU Space User Consultation Platform - Infrastructure](#)
- [EU Space User Consultation Platform - Renewable Energy](#)
- [EU Space User Consultation Platform - Consumer Solutions: EO-Platforms & Consumer Applications](#)

## EU Space User Consultation Platform - Emergency Management & Humanitarian Aid



### EMERGENCY MANAGEMENT AND HUMANITARIAN AID User Needs and Requirements

EU Space User Consultation Platform 2022  
3 October 2022



+8

Take part in the session

🕒 10:00 - 18:30 CET 📍 Mama Shelter Hotel - Atelier 6

View session info

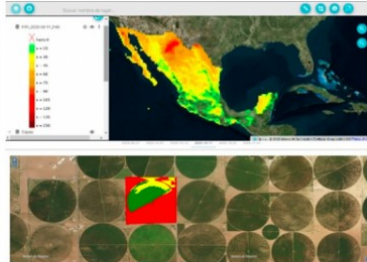
## CONAE / AEM SIRIS PLATFORM

[Home](#) > [Courses](#) > [Sustainable Development / SPACE4SDGs](#) > [United Nations Platform for Space-based Information for Disaster Management and Emergency Response \(UN-SPIDER\)](#) > [Office for Outer Space Affairs UN-SPIDER Knowledge Portal](#) > [CONAE / AEM SIRIS PLATFORM](#)

Course categories:

[Sustainable Development / SPACE4SDGs / United Nations Platform for Space-based Information for Disaster Management and Emergency Response \(UN-SPIDER\) / Office for Outer Space Affairs UN-SPIDER Knowledge Portal / CONA](#)

### Mexico and Argentina align satellite networks to resolve regional challenges



Snapshot of the SIRIS platform in action. Image: Mexican Space Agency (AEM)

In collaboration with the National Commission for Space Activities (CONAE) of Argentina, the Mexican Space Agency (AEM) recently launched a digital platform to improve the integration of satellite data for environmental monitoring in Latin America. The Comprehensive Regional Satellite Information System (SIRIS) provides access to satellite information in order to enhance decision-making and facilitate disaster management.

The SIRIS platform provides access to satellite imagery for different areas. The platform supplies information on the agriculture and forestry sector to better monitor the impact of natural disasters on agricultural production and woodland. It also offers up-to-date and archived data on fires to strengthen early warning and build long-term resilience. On floods, information provided by SIRIS indicates the water level to improve damage evaluation of the impacted area and facilitate humanitarian relief. In terms of disease control, the platform offers information on specific environmental conditions that promote the dissemination of diseases in order to control the outbreak effectively. SIRIS is available for free and can be accessed using [this link](#).

SIRIS is sponsored by the Inter-American Development Bank and in partnership with eight regional governments offering expertise and spatial imagery. The integration of competences and the transfer of knowledge between countries through the use of SIRIS strengthens regional cooperation and promotes the use of earth observation data for disaster management in Latin America.

CONAE and AEM are two of twenty-five UN-SPIDER Regional Support Offices