



CEOS OpenSearch
Best Practice Document
Version 1.1D3

CEOS Document

[CEOS-OPENSEARCH-BP-V1.1D3]

Revision History

Date	Version	Sections affected	Changes
2014-12-17	1.0(draft)	All	Draft release for public comment period
2015-05-29	1.0	All	Official release
2015-06-10	1.0.1	CEOS-BP-007	<ul style="list-style-type: none"> Changed to recommend startIndex over startPage in CEOS-BP-007
2016-01-13	1.1 D1	All	<p>Conversion from Google Doc to MS-Word using styles to generate Table of content, list of figures and list of tables.</p> <p>Appendix added listing open issues for which agreement is still needed.</p> <p>Use of "param:" namespace prefix made consistent in several examples.</p>
		Section 1.4	Section revised to strengthen applicability of OGC specifications (as per WGISS-40 MoM §4.3.1.4).
		Section 1.4.3	Section with namespace prefix mappings added to remove ambiguity about meaning of namespace prefixes used in the normative part (and its examples) of the text, e.g. meaning of "dc:" in CEOS-BP-011.
		Section 2.2	Third bullet added to CEOS-BP-002 to indicate how inconsistencies between <Url> template and <Parameter> elements should be handled.
		Section 2.2.1	<p>Section "Free Text Keyword" about CEOS-BP-002 expanded to also apply to other parameters than "searchTerms" (e.g. eo:platform), and propose the same mechanism to define expected behavior of wildcards in search parameters (eo:platform="SPOT*") to cover the corresponding point in (as per WGISS-40 MoM §4.3.1.4).</p> <p>Reworded to also cover mechanism proposed in CEOS-DG-005 which existed in the text (as an example), but was not identified as a separate requirement.</p>
		Section 2.2.2	CEOS-DG-006 added as a requirement.
		Section 2.2.3	CEOS-BP-101 added (Query element in OSDD).
		Section 2.2.3	CEOS-BP-004 updated to clarify which requirements are to be met before a server can advertise to be CEOS OpenSearch Best Practice compliant.
		Section 2.3	Expected behavior specified when count=0, which is allowed by the

Date	Version	Sections affected	Changes
			specification (CEOS-BP-005B).
		Section 2.3	Guidance added for search parameter name to be used when searching by satellite name (CEOS-BP-005C). Guidance for search parameter value in case of satellite name added.
		Section 2.3	CEOS-DG-007B added derived from original CEOS-DG-007.
		Section 2.3	CEOS-DG-014 added, but split in 014B and 014B to clarify how fixed part of URL corresponding to "keys" of optional parameters should be handled.
		Section 2.3	Sentence added after CEOS-BP-009 to clarify that use of "." as separator is not normative.
		Section 2.4	CEOS-DG-018 added (rel="first", ...).
		Section 2.4	CEOS-BP-012B added. Use of rel="via" in Atom feed to indicate provenance of search results in case of syndication/aggregation.
		Section 2.4	CEOS-DG-020 (Minimum Bounding Rectangle) added as optional (nice-to-have).
		Section 2.4	CEOS-BP-014 updated to clarify representation of multi-polygon and multi-* footprints with GeoRSS GML.
		Section 2.4	CEOS-BP-015B added with guidance on how to return multiple quicklook/browse images corresponding to a single granule.
		Section 2.4	CEOS-BP-016 (rel="enclosure") reworded to clarify that it applies to granule level searches only.
		Section 2.4	CEOS-DG-021 added (dc:date).
		Section 2.4	CEOS-DG-022 (atom:link types) and CEOS-DG-022B added (type attribute). CEOS-BP-012 split in two separate requirements CEOS-BP-012A and CEOS-BP-012C for "metadata" and "documentation".
2016-01-28	1.1 D2	Table 3	Reference to RFC 6906 ("profile" Link), INSPIRE Guidance document and schema.org added.
		Section 2.2.1	Info URI scheme used in "href" attribute to refer to "masked" relation identifier as Info URI are valid URI as per http://www.ietf.org/rfc/rfc4452.txt .
		Section 2.4	CEOS-BP-016B added (data access with multiple files), compliant with [INSPIRE] TG Requirement 32. CEOS-BP-010: wording simplified.

Date	Version	Sections affected	Changes
		Annex C	Subsections C1 and C2 created and JSON-LD example added.
			Internal ESA review comments (Email 21/01/2016 01:20) resolved:
		All	Typos corrected.
		Section 1.3	ADV-1: Subsection "Document terms and definitions" added.
		Section 1.4.1	ADV-4: [OpenSearch] moved to top of table. ADV-6: "encodings" replaced by "metadata model".
		Section 2.2.3	ADV-9: Note added referring to NASA CWIC-SMART automated test tool which rely on a similar convention. ADV-11: Issue added about possible support for multiple conformance levels and different encoding, for discussion with the group.
		Section 2.3	Wording of CEOS-BP-005 updated ("shall").
		Section 2.4	Wording of CEOS-BP-011 updated ("shall").
		Section 2.4	ADV-17: Link type attribute (CEOS-DG-022B) made mandatory. Reference to [INSPIRE] Technical Guidance Req. 30 added.
2016-03-08	1.1 D3		Agreed review comments discussed at teleconf 2 March 2016 integrated.
		All	JGA-01: resto2 to be replaced with resto in URLs.
		Section 2.4	NASA-7: update CEOS-DG-018 to allow for both "prev" and "previous" and add proposed responses for border cases.
		Section 2.2.1	NASA-8: Issue 2 – "href attributes should be URI" removed.
		Section 2.2.3	NASA-9: CEOS-BP-101 - Remove Note 4 and add caveat to use "best example".
		Section 2.4	NASA-10: downgrade requirement CEOS-DG-022B to recommended. Note 9 removed and converted into explanatory text.
		Section 2.2.3	CWIC-1: CEOS-BP-004 updated with three compliance levels and "Issue 5" removed.
		Section 2.4	CWIC-3: CEOS-BP-015B updated. Added possibility of rel=icon" and reword text about attribute unique combination.

Table of Contents

1	INTRODUCTION	10
1.1	PURPOSE OF THE DOCUMENT	10
1.2	PROJECT MEMBERS	11
1.3	TERMINOLOGY.....	11
	<i>Document terms and definitions.....</i>	<i>11</i>
	<i>Terminology referring to data granularity.....</i>	<i>11</i>
	<i>CWIC (CEOS WGISS Integrated Catalog).....</i>	<i>13</i>
	<i>CEOS IDN (CEOS International Directory Network).....</i>	<i>13</i>
	<i>FedEO (Federated Earth Observation Missions).....</i>	<i>13</i>
	<i>OGC (Open Geospatial Consortium).....</i>	<i>13</i>
1.4	SPECIFICATIONS AND REFERENCES.....	13
1.4.1	<i>Applicable Documents</i>	<i>13</i>
1.4.2	<i>Reference Documents</i>	<i>14</i>
1.4.3	<i>Namespace prefix conventions</i>	<i>15</i>
1.5	WHAT IS OPENSEARCH ?	16
	<i>Discovery.....</i>	<i>17</i>
	<i>Description of Service.....</i>	<i>18</i>
	<i>Search</i>	<i>18</i>
	<i>Search Response</i>	<i>19</i>
2	CEOS OPENSEARCH BEST PRACTICES	21
2.1	TWO STEP SEARCH	22
	<i>CEOS-BP-001 - Support of two step search [Recommended].....</i>	<i>22</i>
2.2	OSDD	24
	<i>CEOS-BP-002 - Support of OpenSearch Parameter Extension (Draft 2) [Recommended].....</i>	<i>24</i>
2.2.1	<i>Free Text Keyword</i>	<i>25</i>
	<i>CEOS-DG-005 – Free text parameters [Recommended].....</i>	<i>25</i>
2.2.2	<i>Geometry.....</i>	<i>26</i>
	<i>CEOS-DG-006 – Advertising supported geometry types [Requirement]</i>	<i>26</i>
2.2.3	<i>Other requirements.....</i>	<i>27</i>
	<i>CEOS-BP-003 - rel attribute of the URL in OSDD [Recommended].....</i>	<i>27</i>
	<i>CEOS-BP-101 – Query element in OSDD [Recommended]</i>	<i>27</i>
	<i>CEOS-BP-004 - CEOS OpenSearch Best Practice identifier [Recommended]</i>	<i>28</i>
2.3	SEARCH REQUEST.....	28
	<i>CEOS-BP-005 - Supported search parameters [Requirement].....</i>	<i>28</i>
	<i>CEOS-BP-005B - Search with count=0 [Optional]</i>	<i>29</i>

CEOS-BP-005C - Search with satellite name [Optional]	29
CEOS-DG-007B – Client identification [Recommended]	30
CEOS-DG-014A – Preserving URL template parameters [Requirement]	30
CEOS-DG-014B – Optional template parameters [Requirement]	30
CEOS-BP-006 - Multi-words for searchTerms [Recommended]	31
CEOS-BP-007 - Use of startIndex over startPage [Recommended]	32
CEOS-BP-008 - Search with geo:name [Recommended]	32
CEOS-BP-009 - Output encoding format in search URL [Optional]	32
2.4 SEARCH RESPONSE	33
CEOS-BP-010 - Output encoding format support [Requirement]	33
CEOS-BP-011 - Support of dc:identifier in search response to allow for search-by-ID [Requirement]	33
CEOS-DG-018 – Result set navigation [Recommended]	33
CEOS-BP-012 - Metadata representation in search response [Recommended]	34
CEOS-BP-012B – Provenance information [Optional]	35
CEOS-BP-012C – Reference to documentation [Recommended]	35
CEOS-DG-022 – Relation attribute values [Recommended]	36
CEOS-DG-022B – Link type attribute [Recommended]	36
CEOS-BP-013 - atom:summary [Recommended]	37
CEOS-DG-021 – Dublin Core date [Recommended]	37
CEOS-BP-014 - GeoRSS [Recommended]	37
CEOS-BP-014B – GeoRSS multi-polygon footprint [Recommended]	37
CEOS-BP-014C – GeoRSS multi-point footprint [Recommended]	39
CEOS-BP-014D – GeoRSS multi-line footprint [Recommended]	39
CEOS-DG-020 – Minimum-bounding rectangle [Optional]	40
CEOS-BP-015 - Browse image [Recommended]	41
CEOS-BP-015B – Multiple browse images [Optional]	41
CEOS-BP-016 - Data access [Recommended]	42
CEOS-BP-016B - Data access to multiple files [Optional]	42
2.5 EXCEPTIONS	42
CEOS-BP-017 - Exception codes [Recommended]	42
2.6 FUTURE DISCUSSIONS	42
3 CLOSER LOOK ON IMPLEMENTATIONS	44
3.1 BASICS	44
3.1.1 OSDD URL	44
3.1.1.1 Collection Level	44
3.1.1.2 Granule Level (examples)	44
3.1.2 Search URL	44
3.1.2.1 Collection Level	44
3.1.2.2 Granule Level (examples)	45
3.1.3 Documents	45
3.2 REMARKABLE PRACTICES	46
3.2.1 OSDD	46
3.2.1.1 Support of parameter extension	46
3.2.1.2 Support of Explain operation (SRU)	46
3.2.2 Output encoding format in a search URL	46
3.2.3 Support of 2 step search	46

3.2.4	<i>Search Parameters</i>	47
3.2.4.1	Supported Search Parameters	47
3.2.5	<i>Supported output format</i>	49
3.2.6	<i>Output schema support</i>	49
3.2.7	<i>Free Keyword notation (searchTerms)</i>	49
3.2.8	<i>Pagination</i>	49
3.2.9	<i>Search Result</i>	50
3.2.9.1	Browse	50
3.2.9.2	Thumbnail.....	50
3.2.9.3	Mask Image.....	50
3.2.9.4	Metadata	50
3.2.9.5	Documentation	50
3.2.9.6	Data.....	51
3.2.10	<i>Error Handling</i>	51
3.2.10.1	Exception Status Code (4xx, 5xx)	51
ANNEX A:	LIST OF OPENSEARCH ENDPOINTS	52
ANNEX B:	EXAMPLES	53
B1.	OSDD (COLLECTION LEVEL)	53
	<i>IDN/CWIC</i>	53
	<i>FedEO</i>	53
	<i>CNES</i>	53
B2.	OSDD (GRANULE LEVEL).....	54
	<i>IDN/CWIC</i>	54
	<i>FedEO</i>	54
	<i>CNES</i>	54
B3.	SEARCH REQUEST	55
	<i>IDN/CWIC</i>	55
	<i>FedEO</i>	55
	<i>CNES</i>	55
B4.	SEARCH RESPONSE (ATOM)	56
	<i>IDN/CWIC</i>	56
	<i>FedEO</i>	57
	<i>CNES</i>	62
ANNEX C:	SEARCH-ENGINE-FRIENDLY CATALOG	66
C1.	USING MICRODATA	66
C2.	USING JSON-LD.....	69
ANNEX D:	LIST OF OPEN ISSUES	71
ANNEX E:	TRACEABILITY WITH DEVELOPER GUIDE	72

List of Figures

Figure 1: CEOS OpenSearch	10
Figure 2: EO satellite data granularity	12
Figure 3: OpenSearch client-server interaction	17
Figure 4: 2 Step Search Diagram	23
Figure 5: Referencing Metadata and Documentation	35

List of Tables

Table 1 – Terminology mapping for collections and granules	12
Table 2 – List of applicable documents	14
Table 3 – List of reference documents.....	15
Table 4 – List of namespace prefix mappings.....	16
Table 5 – List of additional namespace prefix mappings	16
Table 6 – List of best practices	21
Table 7 – MIME types for metadata formats	36
Table 8 – Relation attribute values	36
Table 9 – Mapping Developer Guide with Best Practice requirements.	73

1 Introduction

This document provides server implementation best practices of EO OpenSearch search service that allows for standardized and harmonized access to metadata and data of CEOS agencies, including CWIC and FedEO.

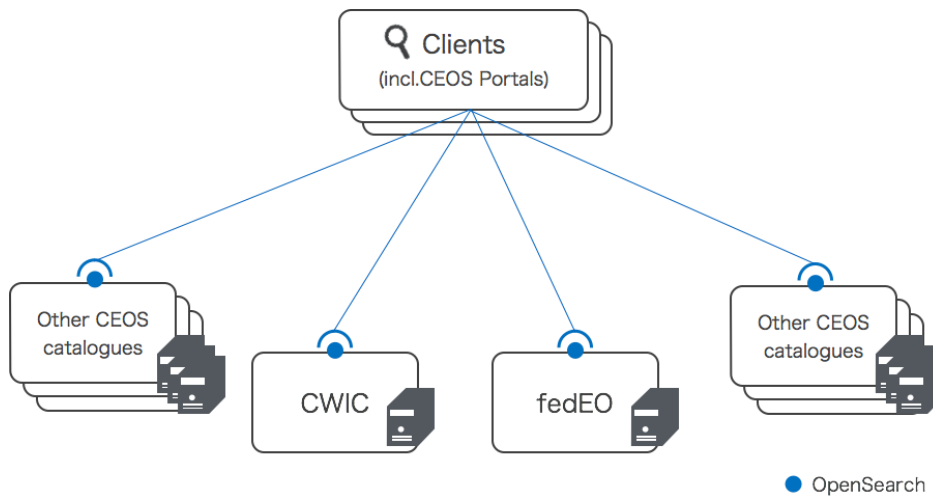


Figure 1: CEOS OpenSearch

1.1 Purpose of the document

The purpose of this document is to achieve followings.

- Promote the use of the OpenSearch standard as a means of data discovery for Earth Data providers
- Define the expectations and requirements of candidate OpenSearch implementations
- Remove ambiguity in implementation where possible
- Facilitate the aggregation of results between disparate Earth Data providers via OpenSearch common standards
- Allow for clients to access search engines via an OpenSearch Description Document (OSDD) with no a priori knowledge of the interface
- Facilitate smooth integration between related OpenSearch implementations, such as a dataset resource collection that refers to granule resource collections from another provider

1.2 Project Members

This document has been developed by the CEOS OpenSearch Project Team of the Committee on Earth Observation Satellites (CEOS) Working Group on Information Systems and Services (WGISS).

The project team members are listed below.

JAXA	Yoshiyuki Kudo (co-lead of the project) Satoko Miura
CNES	Jérôme Gasperi (co-lead of the project) Richard Moreno
ESA	Pier Giorgio Marchetti Giuseppe Troina Yves Coene Philippe Mougnaud Andrea Della Vecchia
NASA	Andrew Mitchell Yonsook Enloe Douglas Newman Christopher Lynnes
NOAA	Martin Yapur Kenneth McDonald
CCMEO	Patrick King

1.3 Terminology

Document terms and definitions

The word "shall" (not "must") is the verb form used to indicate a requirement to be strictly followed to conform to this standard.

Terminology referring to data granularity

Earth observation (EO) satellite data usually falls into two types in the context of granularity - collection and granule.

Granule

The finest granularity of data that can be independently managed. Granule usually matches the

individual file of EO satellite data.

Collection

An aggregate of granules sharing the same product specification. A collection typically corresponds to the series of products derived from data acquired by a sensor on board a satellite and having the same mode of operation.

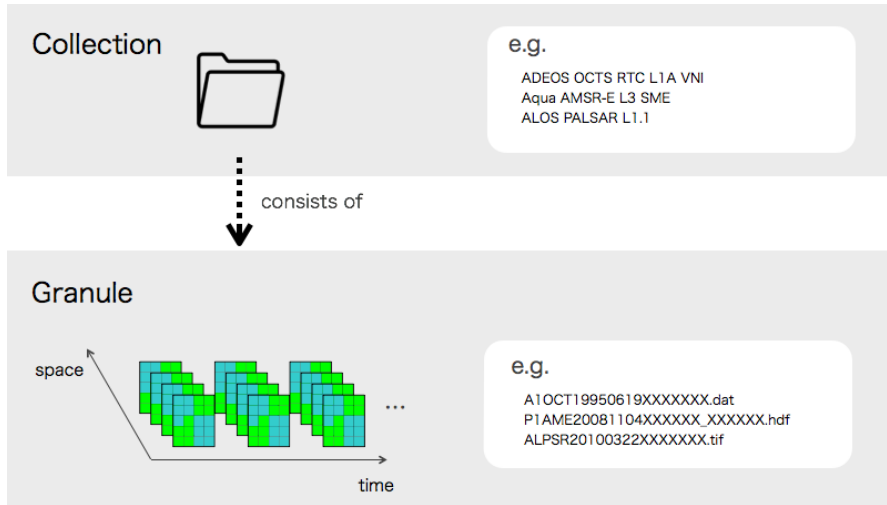


Figure 2: EO satellite data granularity

Here, it is interesting to show how agencies use different terminology for referring to these two granularities.

Terminology (Fig 2)	ISO terms (i.e. ISO19115-2)	Agency dependent terminology
collection	dataset series	collection (CNES, NASA) dataset (JAXA) dataset series (ESA) product (JAXA)
granule	dataset	dataset (ESA) granule (NASA) product (ESA, CNES) scene (JAXA)

Table 1 – Terminology mapping for collections and granules

Since the agencies share the common notion of this two level hierarchy, the difference does not harm the harmonization effort of this activity.

The terminology “collection” and “granule” - are used throughout this document.

CWIC (CEOS WGISS Integrated Catalog)

The Working Group on Information Systems and Services is a subsidiary body supporting the Committee on Earth Observing Satellites (CEOS). WGISS promotes collaboration in the development of systems and services that manage and supply these observatory data.

CEOS IDN (CEOS International Directory Network)

An international effort developed to assist researchers in locating information on available datasets and services. The directory is sponsored as a service to the Earth science community.

FedEO (Federated Earth Observation Missions)

FedEO provides interoperable access, following ISO/OGC interface guidelines, to Earth Observation metadata.

OGC (Open Geospatial Consortium)

OGC is an international industry consortium of private companies, government agencies and universities participating in a consensus process to develop publicly available interface standards.

1.4 Specifications and references

1.4.1 Applicable Documents

OpenSearch implementations within CEOS shall comply with the following specifications.

Conformance to these specifications helps achieve consistent level of implementation across CEOS agencies and systems.

Acronym	Title	Reference	Issue
[OpenSearch]	OpenSearch Specification, 1.1, Draft 5	http://www.opensearch.org/Specifications/OpenSearch/1.1/Draft_5	1.1 Draft 5
[OGC 10-032r8]	OpenSearch Geo and Time extensions	OGC 10-032r8, https://portal.opengeospatial.org/files/?artifact_id=56866	r8, 14/04/2014
[OGC 13-026r5]	OpenSearch Extension for Earth Observation Products	OGC 13-026r5. https://portal.opengeospatial.org/files/?artifact_id=61006	r5, 29/10/2014.
[Param]	OpenSearch Parameter Extension – 1.0 Draft 2	http://www.opensearch.org/Specifications/OpenSearch/Extensions/Parameter/1.0/Draft_2	1.0 Draft 2

[Relevance]	OpenSearch Relevance Extension	http://www.opensearch.org/Specifications/OpenSearch/Extensions/Relevance/1.0/Draft_1	1.0 Draft 1
[Atom]	Atom syndication format	IETF RFC4287, http://tools.ietf.org/html/rfc4287	

Table 2 – List of applicable documents

The Geo and Time extensions [OGC 10-032r8] specify a series of query parameters that can be used to geographically constrain search results including bounding box, geometry, start and end of a temporal extent. It also defines a set of fields to be used to express geographical and temporal context in the search results.

The extension for EO Products [OGC 13-026r5] defines query parameters that allow the filtering of search results with the fields that are unique to EO products, e.g. platform (satellite), sensor, processing center, etc. The OpenSearch query parameters defined in this document are aligned with O&M EO Profile [OGC 10-157r4] that describes EO products metadata.

The OpenSearch Parameter Extension [Param] sets rules to describe valid range and entries for query parameters in OSDD. This extension is not an OGC standard.

Reading these specifications may require understanding of the following related specification as well.

- O&M EOP Profile [OGC 10-157r4]

The O&M (Observations and Measurements) EO Profile [OGC 10-157r4] defines the metadata model required to describe metadata of Earth Observation (EO) data. The underlying O&M standard (ISO 19156 and OGC 10-025r1) defines a conceptual schema encoding for observations, and for features involved in sampling when making observations.

1.4.2 Reference Documents

Reference documentations are as follows.

Acronym	Title	Reference	Issue
[OGC 10-157r4]	Earth Observation Profile of Observations and Measurements	OGC 10-157r4, http://www.opengeospatial.org/standards/om	r4.
[FedEO-CPG]	FedEO Client Partner Guide	PDGS-FEDEO-SPB-ICD-15-1174, https://wiki.services.eoportal.org/tiki-download_wiki_attachment.php?attId=4065	Issue 1.1, 22/12/2015
[CWIC-]	CWIC OpenSearch Best	https://wiki.earthdata.nasa.gov/download	

[OBP]	Practices	d/attachments/28541363/CWIC%20Open%20Search%20Best%20Practices.docx?version=3&modificationDate=1394136508686&api=v2	
[CWIC-ODPG]	CWIC OpenSearch Data Partner Guide	http://ceos.org/document_management/Working_Groups/WGISS/Projects/CWIC/OpenSearch/CWIC_OpenSearch_Data-Partner-Guide.doc	
[CWIC-OCPG]	CWIC OpenSearch Client Partner Guide	http://ceos.org/document_management/Working_Groups/WGISS/Projects/CWIC/OpenSearch/CWIC_OpenSearch_Client-Guide.doc	
[Referrer]	OpenSearch Referrer Extension	http://www.opensearch.org/Specifications/OpenSearch/Extensions/Referrer/1.0	Issue 1.0 Draft 1
[RFC6906]	RFC 6906, The "profile" Link Relation Type	https://tools.ietf.org/html/rfc6906	
[INSPIRE]	Technical Guidance for the implementation of INSPIRE Download Services.	http://inspire.ec.europa.eu/documents/Network_Services/Technical_Guidance_Download_Services_v3.1.pdf	Issue 3.1, 09/08/2013
[schema.org]	Getting started with schema.org	https://schema.org/docs/gs.html	

Table 3 – List of reference documents

1.4.3 Namespace prefix conventions

Namespace prefixes used in the requirements section and corresponding examples in current document map to the namespaces according to the mappings defined in [OGC 10-032r8] and [OGC 13-026r5]. The prefixes are not normative and are merely chosen for convenience; they may appear in examples without being formally declared, and have no semantic significance. The namespaces to which the prefixes correspond are normative, however.

Prefix	Namespace URI	Specification
atom	http://www.w3.org/2005/Atom	The Atom Syndication Format Common 1.0 – RFC-4287
dc	http://purl.org/dc/elements/1.1/	Namespace Policy for the DCMI ^a
eo	http://a9.com/-/opensearch/extensions/eo/1.0/	OpenSearch Extension for EO
geo	http://a9.com/-/opensearch/extensions/geo/1.0/	OpenSearch Geo Extension
georss	http://www.georss.org/georss	GeoRSS Specification

Prefix	Namespace URI	Specification
os	http://a9.com/-/spec/opensearch/1.1/	OpenSearch 1.1 Specification
time	http://a9.com/-/opensearch/extensions/time/1.0/	OpenSearch Time Extension
^a See < http://dublincore.org/documents/dcmi-namespace/ >.		

Table 4 – List of namespace prefix mappings

The following namespace prefixes are used as well.

Prefix	Namespace URI	Specification
param	http://a9.com/-/spec/opensearch/extensions/parameters/1.0/	[Param]
referrer	http://www.opensearch.org/Specifications/OpenSearch/Extensions/Referrer/1.0	[Referrer]

Table 5 – List of additional namespace prefix mappings

1.5 What is OpenSearch ?

OpenSearch is a collection of simple formats for the sharing of search results.

The [OpenSearch] specification defines description document (OSDD) format that can be used to describe a search engine so that it can be used by search client applications.

The OpenSearch response elements can be used to extend existing syndication formats, such as RSS and Atom, with the extra metadata needed to return search results. Figure 3 shows a diagram of client and server interaction of OpenSearch.

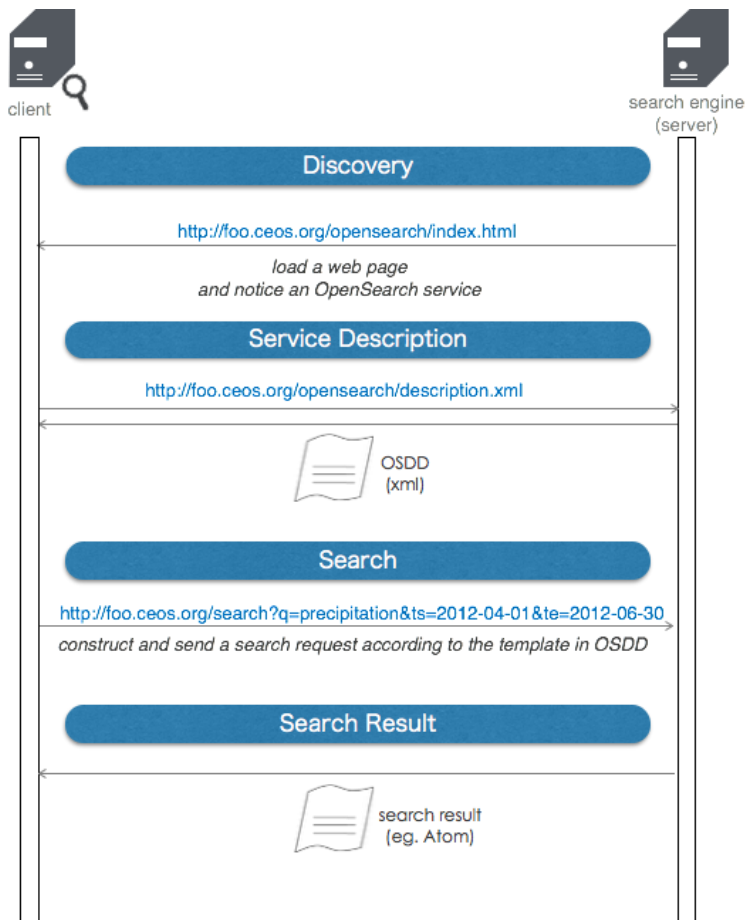


Figure 3: OpenSearch client-server interaction

Discovery

A client can learn the support of OpenSearch service of the server by looking at the html header of its web page. A link element with a rel attribute equal to “search” shows the location of the OSDD in the value of “href” attribute as shown below.

```

<html>
<head>
<link rel="search"
type="application/opensearchdescription+xml"
title="Foo Search Engine"
href="http://foo.ceos.org/xxx/description.xml"> ... URL to OSDD
  
```

```
...  
...
```

Description of Service

The client uses the OSDD to learn about the public interface of the server. The OSDD contains parameterized URL templates that indicate how the search client should make search requests. The URL template can iterate as many times as the output format of the search result are supported.

```
<OpenSearchDescription  
  xmlns="http://a9.com/-/spec/opensearch/1.1/"  
  xmlns:os="http://a9.com/-/spec/opensearch/1.1/"  
  xmlns:atom="http://www.w3.org/2005/Atom"  
  xmlns:time="http://a9.com/-/opensearch/extensions/time/1.0/"  
  xmlns:geo="http://a9.com/-/opensearch/extensions/geo/1.0/"  
  xmlns:eo="http://a9.com/-/opensearch/extensions/eo/1.0/"  
  xmlns:param="http://a9.com/-/spec/opensearch/extensions/parameters/1.0/"  
  xmlns:dc="http://purl.org/dc/elements/1.1/">  
  ...  
<description>This service is ...</description>  
  ...  
<Url type="application/atom+xml" rel="results"  
  template="http://...search/atom?q={searchTerms}&ts={time:start}&te={time:end  
  }"/>  
<Query role="example" searchTerms="water"  
  time:start="2012-04-01"  
  time:end="2012-06-30"/>  
  ...  
</OpenSearchDescription>
```

Search

A client constructs the request URL by replacing each {xxx} in the URL template with a value and sends it to the server via HTTP GET. For example :

```
<Url type="text/html"  
  template="http://...search?q={searchTerms}&ts={time:start}&te={time:end?}>
```

can become something like :

```
http://...search?q=water&ts=2012-04-01&te=2012-06-30
```

to be a valid search request string. Optional parameters indicated with a "?" such as {xxx?} can be left empty.

Search Response

OpenSearch doesn't define or require any specific encoding format for the search response. Instead, it defines a set of search-related metadata elements which can be inserted into existing encoding formats. Typically, list-based XML syndication formats - such as RSS 2.0 and Atom 1.0 - are used.

The OpenSearch response elements include :

totalResults	:	number of total results
startIndex	:	index number corresponding to the first entry item returned
itemsPerPage	:	number of results returned
Query	:	search query to get the same search response

Below is an example of a search response in Atom, to the free keyword “water”. Notice the three OpenSearch elements appear inside the feed element.

```
<feed xmlns=http://www.w3.org/2005/Atom
xmlns:os="http://a9.com/-/spec/opensearch/1.1/">
<title>OpenSearch response to" water"</title>
<id>http://example.ceos.org/search?q=water</id>
<author><name>Taro Yamada</name></author>
<os:totalResults>231</os:totalResults>
<os:startIndex>51</os:startIndex>
<os:itemsPerPage>50</os:itemsPerPage>
<os:Query role="request" searchTerms="water" time:start="2012-04-01"
time:end="2012-06-30" />
<entry>
  <title>Water Resource Management Guideline</title>
  <id>http://aaa.ceos.org/waterResource/guideline/v001</id>
  <link href="http://aaa.ceos.org/waterResource/guideline/v001"/>
</entry>
<entry>
  ...
</entry>
<entry>
  ...
  </entry>
<entry>
  ...
  </entry>
</feed>
```

2 CEOS OpenSearch Best Practices

This chapter goes through best practices that have been worked out from OpenSearch server implementations at CEOS agencies and projects.

The list of best practices are summarised in the table below.

NOTE 1 – Summary table to be updated

The table below is to be updated once final list of requirements, their numbering, sequence and requirement level is frozen.

ID	Category	Title	Requirement Level
CEOS-BP-001	Two step search	Support of two step search	Recommended
CEOS-BP-002	OSDD	Support of OpenSearch Parameter Extension (Draft 2)	Recommended
CEOS-BP-003		rel attribute of the URL in OSDD	Recommended
CEOS-BP-004	BP Compliance Declaration	CEOS OpenSearch Best Practice identifier	Recommended
CEOS-BP-005	Search Request	Supported search parameters	Requirement
CEOS-BP-006		Multi-words for searchTerms	Recommended
CEOS-BP-007		Use of startIndex over startPage	Recommended
CEOS-BP-008		Search with geo:name	Recommended
CEOS-BP-009		Output encoding format in search URL	Optional
CEOS-BP-010	Search Response	Output encoding format support (atom)	Requirement
CEOS-BP-011		Support of dc:identifier in search response to allow for search-by-ID	Requirement
CEOS-BP-012		Metadata representation in search response	Recommended
CEOS-BP-013		atom:summary	Recommended
CEOS-BP-014		GeoRSS	Recommended
CEOS-BP-015		Browse Image	Recommended
CEOS-BP-016		Data access	Recommended
CEOS-BP-017	Exceptions	Exception codes	Recommended

Table 6 – List of best practices

2.1 Two Step Search

CEOS-BP-001 - Support of two step search [Recommended]

One serious hurdle to overcome in searching for data is the great number of data items to account for in responses, as well as the expected number of successful “hits” for a query. In ordinary web searches, the searcher is usually looking for a small number of web pages or documents. Relevance ranking typically does a good job of presenting these successful hits near the top of the returned list, followed by single point-and-click retrievals. However, when searching for Earth science data covering large time periods or spatial areas, a user will often specify a set of constraints to find an appropriate data collection together with space-time criteria for files within that data collection. Often, the precision of the data collections returned for the search is low, with many spurious hits. However, the space-time precision of the files is often quite high: that is, the user truly wants to use all the data files of a desirable data collection set that fall within the space-time region of interest. Thus, searching for all data satisfying both dataset content and space-time region at the same time can produce a great many spurious hits, i.e., all the files for data collections that are *not* desired.

The 2 step search consists of a collection level search and the subsequent granule level search (or file-level search) as Figure 4 shows.

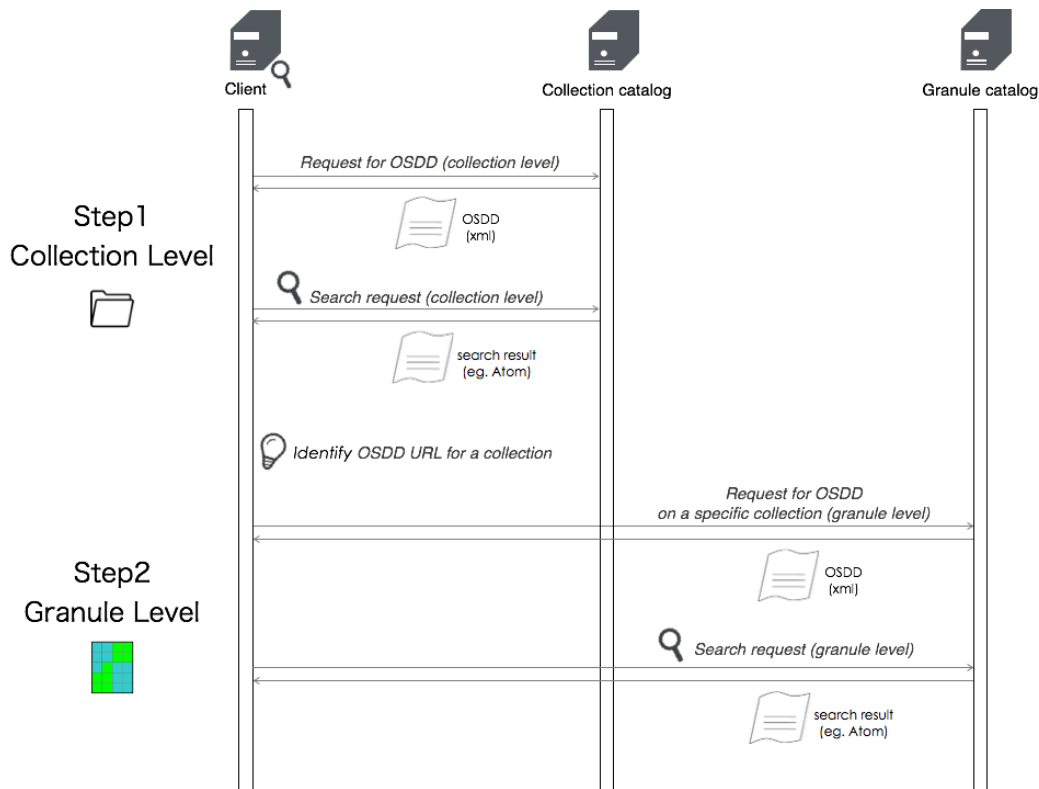


Figure 4: 2 Step Search Diagram

In order to provide a well-defined search path from a collection of interest to granules associated with that collection, we advocate the use of two-step searching leveraging the following,

1. link elements of relation search (rel='search') within collection entries. These links point to a granule-level OSDD specific to the collection entry
2. Granule level OSDDs that can be tailored to a specific collection

The key requirement of this approach is an identifier that **both** the collection and granule resource understand as uniquely describing the collection.

The advantages of this approach are as follows,

- A client can navigate from dataset to granule with only an understanding of the OpenSearch specification.
- A server can link between datasets and granules using any set of unique identifiers they choose. For example, identifier plus version
- It allows the client to determine what search parameters are available to the user at the granule level using the OSDD

For example, a collection level search result looks something like this :

```

<feed>
  ...
  <entry>
    <title>Collection A</title>
    <link rel="search" type="application/opensearchdescription+xml"
href="http://foo.ceos.org/search/osdd.xml?collectionId=collection_a" />
    ...
  </entry>

  <entry>
    <title>Collection B</title>
    <link rel="search" type="application/opensearchdescription+xml"
href="http://foo.ceos.org/search/osdd.xml?collectionId=collection_b" />
    ...
  </entry>
  ...
</feed>

```

The value of href attribute of the link element with the rel attribute equal to "search", in this case, http://foo.ceos.org/search/osdd.xml?collectionId=collection_a, for the collection A, is the URL to the OSDD specific to collection A.

Looking for the OSDD in each result entry, a client can be navigated to URL template(s) usable for the collection's granule level search.

The URL template for the granule search contains a search parameter dedicated to the specific collection, which is hard-coded and not meant to be replaced by the client when constructing a query. E.g.

```

<Url type="application/atom+xml" rel="results"
template="http://../search/collection.atom?collectionId=collection_a&q={searchTerms}&ts={time:start}&te={time:end}&bbox={geo:box}>

```

Notice "collection_a" is not enclosed in braces.

2.2 OSDD

CEOS-BP-002 - Support of OpenSearch Parameter Extension (Draft 2) [Recommended]

The Parameter Extension explicitly advertises the valid lists and ranges of search parameters. Thus, it allows reducing ambiguity and error dramatically.

CEOS recommends to support the OpenSearch Parameter Extension with the following constraints:

- 1) the “value” attribute should always be set to facilitate the client task (i.e. avoid to parse the <Url> templates)
- 2) other attributes (i.e. “minimum”, “maximum”) and options elements should be provided only when it makes sense
- 3) In case of inconsistency¹ between the Parameter extension annotations and the <Url> template in the OSDD, the <Url> template prevails.

2.2.1 Free Text Keyword

CEOS-DG-005 – Free text parameters [Recommended]

For conveying the server’s support condition on free keywords (e.g. searchTerms), the server should declare adherence to a specific, existing standard within the parameter definition using the Parameter Extension and an Atom link referring to a profile [RFC6906].

See below for an example.

```
<param:Parameter name="q" value="{searchTerms}">
  <atom:link rel="profile"
href="http://lucene.apache.org/core/2_9_4/queryparsersyntax.html"
title="This parameter follows the Lucene free text search implementations"
/>
</param:Parameter>
```

It tells a client to see the href link for the notation rule of free keywords (q) the server complies with. In this case, one can know that Apache Lucene is used.

A similar convention can be used by an OpenSearch server to advertise its support for relation modifiers (e.g. wild cards such as "*" or "?"). The OpenSearch specifications (in contrast to the more elaborated OASIS SearchRetrieve specifications²), do not specify the expected behavior

¹ Examples of "inconsistencies" are when the <Url> template includes a parameter for which no <param:Parameter> is specified or when a search parameter is mandatory or optional in the <Url> template, but the corresponding <param:Parameter> element does not have a corresponding "minimum" or "maximum" attribute or such attributes with contradicting values.

² OASIS SearchRetrieve specifications (available at [http://docs.oasis-open.org/search-
ws/searchRetrieve/v1.0/os/part5-cql/searchRetrieve-v1.0-os-part5-cql.html](http://docs.oasis-open.org/search-
ws/searchRetrieve/v1.0/os/part5-cql/searchRetrieve-v1.0-os-part5-cql.html)) use the notion of context-sets

of a server in such cases. To allow clients to know whether a string passed as parameter value can contain wild cards or relational operators, the Parameter extension can be used as well.

In the example below, the server advertises its support for the "masked" relation modifier defined at the URL provided. This allows a client to pass eo:platform parameters with wild cards such as "SPOT*" and receive hits for SPOT-4, SPOT-5.

```
<param:Parameter name="platform" value="{eo:platform}">
  <atom:link rel="profile" href="info:srw/cql-context-set/1/cql-
v2.0#masked" title="This parameter supports wild cards" />
</param:Parameter>
```

In the example below, the server explicitly states that it does not support the "masked" relation modifier (i.e. wildcards) for the eo:platform search parameter.

```
<param:Parameter name="platform" value="{eo:platform}">
  <atom:link rel="profile" href="info:srw/cql-context-set/1/cql-
v2.0#unmasked" title="This parameter does not support wild cards" />
</param:Parameter>
```

2.2.2 Geometry

For conveying the server's support condition on geometry (geo:geometry), the server should declare adherence to a specific, existing standard within the parameter definition using the Parameter Extension.

See below for an example.

CEOS-DG-006 – Advertising supported geometry types [Requirement]

An OpenSearch server with {geo:geometry} search capabilities shall advertise supported geometry types with the Parameter extension and via Atom links referring to geometry type profiles.

```
<param:Parameter name="geometry" value="{geo:geometry}">
  <atom:link rel="profile" href="http://www.opengis.net/wkt/LINESTRING"
title="This service accepts WKT LineStrings"/>
  <atom:link rel="profile" href="http://www.opengis.net/wkt/POINT"
```

defining different kinds of relation modifiers. An example context set with useful conventions is info:srw/cql-context-set/1/cql-v2.0 which defines the "masked" and "unmasked" modifiers.

```

title="This service accepts WKT Point"/>
  <atom:link rel="profile" href="http://www.opengis.net/wkt/POLYGON"
title="This service accepts WKT Polygons"/>
  <atom:link rel="profile"
href="http://www.opengis.net/wkt/MULTILINESTRING" title="This service
accepts WKT Multi-LineStrings"/>
  <atom:link rel="profile" href="http://www.opengis.net/wkt/MULTIPOINT"
title="This service accepts WKT Multi-Point"/>
  <atom:link rel="profile"
href="http://www.opengis.net/wkt/MULTIPOLYGON" title="This service accepts
WKT Multi-Polygons"/>
</param:Parameter>

```

This explains that a server supports point, line and polygon among other geometry types, and the convention can be found in the value of href.

NOTE 2 – Requirement renumbering

The above requirement corresponds to the CEOS-DG-006 requirement and is still to be renumbered in the final version.

To preserve mapping with original requirement numbering in Best Practice document version 1.0.1, CEOS-BP-123 could be renamed into CEOS-BP-1230 allowing new requirements to be inserted in between original requirements. Alternatively "-BP-" can be replaced by either "-REC-" or "-REQ-" or "-OPT-" to reflect the three requirement levels ...

2.2.3 Other requirements

CEOS-BP-003 - rel attribute of the URL in OSDD [Recommended]

CEOS recommends the use of rel attribute of Url element in OSDD in the following manner³.

- rel="collection" to advertise collection level search query URL
- rel="results" (default) to mean granule level search query URL

If rel attribute is not specified, it is assumed that its value is "results".

CEOS-BP-101 – Query element in OSDD [Recommended]

For testability purposes, CEOS recommends that an OSDD should at least contain one <Query role="example"/> element as per [OpenSearch] defining a search query with Atom response which does return representative results.

³ As per <http://www.ietf.org/rfc/rfc6573.txt>.

In case the OSDD contains multiple <Url> templates or <Url> templates for both collection and granule level search, the Query element shall refer to a collection level search with Atom response.

In case the OSDD contains only <Url> templates for collection level search, the Query element shall refer to a collection level search with Atom response. In case the OSDD contains only <Url> templates for granule level search, the Query element shall refer to a granule level search with Atom response.

Implementers are recommended to include a search query example which will return a response with the largest possible set of features, e.g. quick look images, access to data etc.

CEOS-BP-004 - CEOS OpenSearch Best Practice identifier [Recommended]

CEOS recommends adding a string “ (as defined below) indicating the server conformance level within the <Tags> element of the OSDD. This can be used by a CEOS OpenSearch client to detect from the OSDD which requirements level the server conforms to.

- CEOS-OS-BP-V1.1/L1: Compliant with all server requirements labeled as [Requirement] in Table 6 of the current specification.
- CEOS-OS-BP-V1.1/L2: Compliant with all server requirements labeled as [Requirement] and [Recommended] in Table 6 of the current specification.
- CEOS-OS-BP-V1.1/L3: Compliant with all server requirements labeled as [Requirement], [Recommended] and [Optional] in Table 6 of the current specification.

2.3 Search Request

CEOS-BP-005 - Supported search parameters [Requirement]

OpenSearch Geo and Time extension [OGC 10-032r8] gives a list of fundamental search parameters sufficient to constrain the search by time and space. The OpenSearch Extension for EO Products [OGC 13-026r5] complements it with optional parameters specific to EO data.

From these specifications, an OpenSearch CEOS implementation shall support the following minimum set of search parameters for both “collection” and “granule” levels:

- *count*
- *searchTerms* (optional for “granule level” search)
- *startIndex* or *startPage*

- *geo:uid*
- *geo:box*
- *time:start*
- *time:end*

Note on {geo:geometry} parameter : the option of polygon in the geometry parameter raises practical issues with HTTP GET requests. Polygons can contain an arbitrary number of vertices which, when expressed as a constraint in a HTTP GET request, may exceed the URL length limits of some HTTP servers. This would suggest that HTTP POST should also be supported in some instances. However, this is not recommended since it would 1) add an unwanted degree of complexity to the specification and 2) using POST to request data would violate a RESTful implementation - POST should be used to “create” a resource on the server not to get a “resource”. As a consequence CEOS recommends the use of HTTP GET only for search request with appropriate HTTP error message (i.e. HTTP 414) when URI is too long.

CEOS-BP-005B - Search with count=0 [Optional]

The count parameter shall support non-negative values according to [OpenSearch]. OpenSearch servers shall return a search response without Atom entries when count=0 is specified the request, but preserve other information in the search response (Atom feed) such as os:totalResults.

CEOS-BP-005C - Search with satellite name [Optional]

OpenSearch servers supporting collection (or granule) search based on satellite name are recommended to pass the satellite name via the {eo:platform} search parameter defined in [OGC 13-026r5].

To avoid name mismatches (e.g. "SPOT 5" versus "SPOT5" versus "SPOT-5" or "SEASAT 1" versus "Seasat"), implementations are encouraged to support names as defined in TBD.

NOTE 3 – Harmonised platform names?

This TBD above should be replaced by a reference to a recommended naming. Candidates are:

- GCMD Platforms: See skos:prefLabel of the platform as defined in <http://gcmdservices.gsfc.nasa.gov/static/kms/platforms/platforms.rdf> (e.g. "SPOT-5", "SEASAT 1")
- The CEOS Database: See <http://database.eohandbook.com/database/missionindex.aspx> (e.g. "SPOT-5", "SeaSat")

CEOS-DG-007B – Client identification [Recommended]

OpenSearch servers wishing to identify clients via a client-supplied identifier (e.g. for purposes of server-side metrics generation) shall request this information through the {referrer:source}⁴ OpenSearch parameter or a non-variable search parameter in the URL template.

```
<Url type="application/atom+xml"
  template="http://...search?q={searchTerms}&clientId={referrer:source}>
```

Consequently, if a client abides by the contract of the URL template in the example above, all queries to the API will contain the clientId parameter.

CEOS-DG-014A – Preserving URL template parameters [Requirement]

OpenSearch clients shall preserve any non-variable search parameters given to them by the URL template in the OSDD for building a search request.

The actual search request shall correspond to the URL template retrieved from the OSDD with mandatory OpenSearch parameters replaced by an actual value and optional parameters (i.e. with "?") replaced by an empty string or the key/value pair of optional parameters removed.

For example: considering the URL template below, with a non-variable parameters (collectionId and clientId) and optional parameter {time:end?}.

```
<Url type="application/atom+xml"
  template="http://...search?
collectionId=collection_a&q={searchTerms}&ts={time:start}&te={time:end?}&cli
entId=foo>
```

Applying the above URL template, clients can make the following valid request:

```
http://...search?collectionId=collection_a&q=water&ts=2012-04-01&te=2012-06-
30&clientId=foo
```

CEOS-DG-014B – Optional template parameters [Requirement]

OpenSearch servers shall treat as equivalent, request URL derived from the OSDD URL template with the value of optional parameter left empty (i.e. the key is present but the value is absent) or key/value pair for the optional parameter removed (i.e. both key and value are absent).

⁴ <http://www.opensearch.org/Specifications/OpenSearch/Extensions/Referrer/1.0>

E.g. The optional parameter {time:end?} can thus either be left empty or the actual parameter "te=" can be removed also.

With optional parameter left empty.

```
http://...search?collectionId=collection_a&q=water&ts=2012-04-01&te=&clientId=foo
```

With optional parameter removed.

```
http://...search?collectionId=collection_a&q=water&ts=2012-04-01&clientId=foo
```

In all cases, the non-variable part of the URL template (i.e. `http://...search?collectionId=collection_a&clientId=foo`) is present.

Note: The use of a mandatory `clientId` parameter is a typical use case for such non-variable URL component.

ISSUE 4 – CEOS-DG-014B – exception to preserving complete URL template

Requirements level [Requirement] is preliminary and still to be agreed. Requirement is an exception to previous requirement asking to "preserve" all fixed content in the URL template.

CEOS-BP-006 - Multi-words for searchTerms [Recommended]

OpenSearch specifications do not define or suggest any convention for the notation of multiple keywords used in `searchTerms` parameter. However, consistent notation rule for expressing a phrase and logical operators are important from a user's (i.e. client's) perspective.

For example, what is the right way to make a search for "air temperature" as a phrase ? One can imagine a client could be bewildered with an enormous results hits when the query was interpreted as "air OR temperature" at the server, for example.

Turning to the parameter extension can resolve this by the server advertising the rule of `searchTerms` in OSDD. (See section 2.2.1 for details)

And when without the parameter extension, following interpretation comes into effect as default.

- white space-delimited words not enclosed in double quote " " represents logical AND (e.g.) `q=air temperature` : `air AND temperature`

- whitespace delimited words enclosed in double quote “ ” represents phrase (e.g.) q="air temperature" : "air temperature" in one phrase

Note the examples are not URL encoded.

CEOS-BP-007 - Use of startIndex over startPage [Recommended]

OpenSearch specification allows the use of both startIndex and startPage for pagination control. It is recommended to use startIndex over startPage, the reason being that startPage cannot be present in the results (not supported in the OpenSearch specification) and thus considered less manageable for clients.

startIndex should precede when both startPage and startIndex are supported and specified in a search request by a client.

CEOS-BP-008 - Search with geo:name [Recommended]

It is recommended to support geo:name and optionally, geo:radius. If geo:name is supported but geo:radius is not, it is recommended the search be treated as point search.

The geo:name can be resolved by Gazetteer and the most common one used by CEOS agencies is geonames.org (<http://api.geonames.org/searchJSON>).

The geo:radius default/not-default value should be indicated by the server in the OSDD within the "title" attribute of the corresponding Parameter element (example below)

```
<param:Parameter name="radius" value="{geo:radius}" title="Expressed in meters. Default value is 10000"/>
```

CEOS-BP-009 - Output encoding format in search URL [Optional]

CEOS recommends the appearance of encoding format as a resource extension in the search URL. Note the "type" attribute of the URL element identifies the encoding format supported by a service, but this practice complements it considering shareable URL (i.e. easier to bookmark).

```
http://foo.ceos.org/search/collection.atom?collectionId=Landsat_8&startPage=1&count=10&timeStart=&timeEnd=&geoBox=
```


Implementations can apply the resource extension using a different separator as well. The use of "." is not normative. The example below is using the resource extension mechanism, with a "/" as separator.

```
http://foo.ceos.org/ATS_NR__2P/atom?count=10
```

2.4 Search Response

CEOS-BP-010 - Output encoding format support [Requirement]

CEOS OpenSearch implementations shall support of Atom [Atom] as a mandatory format, as OpenSearch Geo and Time Extension [OGC 10-032r8] requires.

CEOS-BP-011 - Support of dc:identifier in search response to allow for search-by-ID [Requirement]

The dc:identifier element in the search result shall allow navigating from search results to a single entry inside these results using the OpenSearch parameter {geo:uid} as described in [OGC 10-032r8].

This makes possible the use cases:

- Put a link on a Web site pointing to a single (OpenSearch) catalog item (using a URL) to illustrate a particular event (e.g. an earthquake in the Himalaya)
- End users being able to bookmark and retrieve a single item

CEOS-DG-018 – Result set navigation [Recommended]

CEOS OpenSearch implementations should provide navigation links for the first (rel="first"), previous (rel="prev" or "previous"), current (rel="self"), next (rel="next") and last pages (i.e. rel="last") of a result set (if applicable) using the rel attribute as defined in [OGC 10-032r8] and [RFC5988]⁵ and shown below.

The table below indicates which navigation links should be included in a result set for a number of border cases.

Use cases	rel="first"	rel="previous" or rel="prev"	rel="self"	rel="next"	rel="last"
-----------	-------------	------------------------------	------------	------------	------------

⁵ [OGC 10-032r8] only mentions "self", "prev", "previous", "next". "last" and "first" are defined in RFC5988.

First page of result set	Yes	No	Yes	Yes (if not last page)	Yes
Middle pages of result set	Yes	Yes	Yes	Yes	Yes
Last page of result set	Yes	Yes (if not first page)	Yes	No	Yes
Empty result set	No	No	Yes	No	No

E.g.

```

<feed>
...
<os:totalResults>55</os:totalResults>
<os:itemsPerPage>10</os:itemsPerPage>
<os:startIndex>31</os:startIndex>

  <link href="foo.gov/opensearch/datasets.atom?
startIndex=1&numberOfResults=10" rel="first" type="application/atom+xml"/>
  <link href="foo.gov/opensearch/datasets.atom?
startIndex=21&numberOfResults=10" rel="prev" type="application/atom+xml"/>
  <link href="foo.gov/opensearch/datasets.atom?
startIndex=31&numberOfResults=10" rel="self" type="application/atom+xml"/>
  <link href="foo.gov/opensearch/datasets.atom?
startIndex=41&numberOfResults=10" rel="next" type="application/atom+xml"/>
  <link href="foo.gov/opensearch/datasets.atom?
startIndex=51&numberOfResults=10" rel="last" type="application/atom+xml"/>
...
</feed>

```

CEOS-BP-012 - Metadata representation in search response [Recommended]

Although Atom format allows any foreign (or user-defined) elements to be included and OpenSearch Extension for EO Products [OGC 13-026r5] along with O&M EOP Profile [OGC 10-157r4] suggests many options for metadata fields, CEOS OpenSearch implementations are encouraged to rely on `atom:link@rel="alternate"` or `atom:link@rel="via"` for detailed representation of the metadata. (The “via” relation should be preferred to convey the

authoritative resource or the source of the information from where the atom:entry is made.)

CEOS-BP-012B – Provenance information [Optional]

CEOS OpenSearch implementations using syndication/aggregation of results provided by third-party catalogs are recommended⁶ to include provenance information (at Atom Feed) level using an atom:link element with rel="via" and an href attribute referring to the original result set.

The above is only applicable if the original result set is accessible through an HTTP URL.

CEOS-BP-012C – Reference to documentation [Recommended]

In the same context, atom:link@rel="describedby" should be used to reference to the documentation (a file with human-readable information about the resource).

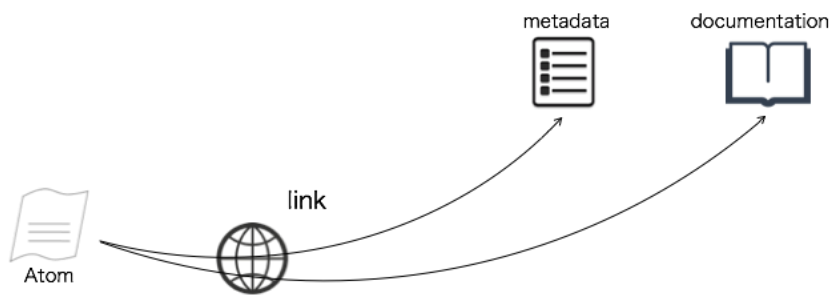


Figure 5: Referencing Metadata and Documentation

E.g.

```
<link rel="alternate" href="http://foo.ceos.org/foo/dataset_abc.xml"
type="application/vnd.iso.19139+xml"/>
<link rel="describedby" href="http://foo.ceos.org/foo/dataset_abc.html"
type="text/html"/>
```

Table 7 defines the MIME types to be used to reference various metadata formats.

Metadata format	MIME Type
-----------------	-----------

⁶ See <http://www.openarchives.org/rs/1.0/resourcesync#RePub>.

ISO 19139	application/vnd.iso.19139+xml
OGC 10-157r3 OGC 10-157r4	application/gml+xml
Dublin core ⁷	application/xml
Markdown	text/x-markdown

Table 7 – MIME types for metadata formats

CEOS-DG-022 – Relation attribute values [Recommended]

CEOS OpenSearch implementations are recommended to use the following relation attribute values when describing artifacts associated with a resource (Atom entry):

Artifact	Definition	Relation	See also	Example
Metadata	file with (usually) structured information about corresponding data files	alternate or via	CEOS-BP-012	<link href="foo.xml" rel="alternate"/>
Browse	image of the data typically used for making data request decisions	icon	CEOS-BP-015	<link href="sample.gif" rel="icon"/>
Documentation	file with (human-readable ⁸) information about the resource	describedby	CEOS-BP-012C	<link href="foo.pdf" rel="describedby"/>
Data	link representing a data file or other science data resource; may be large in size	enclosure	CEOS-BP-016	<link href="foo.hdf" rel="enclosure"/>
OSDD	link to an OpenSearch Description Document; useful for recursive searching	search	CEOS-BP-001	<link href="osdd.xml" rel="search"/>

Table 8 – Relation attribute values

CEOS-DG-022B – Link type attribute [Recommended]

CEOS OpenSearch implementations shall specify the media (MIME) type of the artifact associated with a resource by specifying the "type" attribute of the Atom link element⁹.

This requirement relates allows a client to determine which resource type a HATEOAS Atom

⁷ According to the XML schema <http://www.loc.gov/standards/sru/recordSchemas/dc-schema.xsd>

⁸ The "type" attribute of the Atom link shall determine whether the resource is human-readable.

⁹ This requirement ensures compliance with TG Requirement 30 in [INSPIRE].

link refers to. E.g. a "describedby" link may point to a human readable representation or to an ISO 19139 service metadata file of the INSPIRE Download service. Clients can make this distinction by checking the media type provided in the "type" attribute.

CEOS-BP-013 - atom:summary [Recommended]

Default atom:summary is "text" - i.e. if MIME type is not specified then client should assume that it is of type "text". Otherwise MIME type should be specified according to Table 7. In case of type "text/html", it needs to be correctly escaped. CEOS OpenSearch implementations are recommended to have "useful" information in the actual metadata and not only in atom:summary. Canonical source of information should be in the metadata (atom:link or feed/entry) and not in the atom:summary.

CEOS-DG-021 – Dublin Core date [Recommended]

For representing temporal extents of entries in the search result, it is recommended to use a Dublin Core date (dc:date) element as per [OGC 10-032r8] for representing either:

- A single date
- A single date-time
- A date-time range
- An open-ended date-time range

CEOS-BP-014 - GeoRSS [Recommended]

For representing geographical extent in GeoRSS in the search result, it is recommended when applicable to use "GeoRSS Simple" over "GeoRSS GML".

When non applicable (e.g. footprint made of multiple polygons), "GeoRSS GML" (i.e. <georss:where>) should be used even though a strict application of GeoRSS GML does not allow to representing a multi-polygon (the applicable schema available at <http://www.georss.org/xml/1.0/georss.xsd> only allows four simple GML root elements to appear under georss:where).

CEOS-BP-014B – GeoRSS multi-polygon footprint [Recommended]

For representing geographical extent consisting of a multiple polygons in GeoRSS in the search result, it is recommended to use "GeoRSS GML" with a <gml:MultiSurface> element containing multiple <gml:Polygon> elements.

E.g.

```

<georss:where>
<gml:MultiSurface gml:id="MULSF01" srsName="EPSG:4326">
<gml:surfaceMembers>
<gml:Polygon xmlns:gml="http://www.opengis.net/gml/3.2" gml:id="POLN1004F1">
<gml:exterior>
<gml:LinearRing>
<gml:posList srsDimension="2">42.80386 7.22599 51.65319 4.44298 58.690876
1.600294 63.93042 -1.190491 69.113703 -5.017015 72.515489 -8.589162
75.839731 -13.639094 79.017327 -21.416325 80.505193 -27.095671 81.875982 -
34.701757 83.060111 -45.048111 83.947141 -58.914241 84.394294 -76.114221
84.297169 -94.390703 83.680793 -110.571486 82.675037 -123.155644 81.415609 -
132.447313 79.997781 -139.300653 78.479783 -144.461335 76.896266 -148.453273
73.608796 -154.206101 71.926502 -156.353166 68.5144 -159.740891 65.059909 -
162.325304 61.577619 -164.395098 56.319203 -166.882324 51.031772 -168.896467
35.062954 -173.502794 5.86342 -180 -21.10288 -180 7.040615 -173.900731
23.088247 -169.974902 37.250369 -165.628752 47.742935 -161.263581 52.917102
-158.434729 56.325915 -156.176491 59.690156 -153.507183 62.993884 -
150.281098 67.778891 -143.898159 70.79027 -138.083214 72.21513 -134.50441
74.827617 -125.523104 76.967397 -113.376084 78.371187 -97.57291 78.705462 -
88.558317 78.760132 -79.236134 78.034898 -61.41943 77.302514 -53.606223
75.280825 -40.766619 72.742141 -31.245854 69.880667 -24.184437 66.815004 -
18.828798 63.615602 -14.64938 58.654358 -9.850203 53.567708 -6.203163
48.399967 -3.299028 41.425982 -0.178961 42.80386 7.22599</gml:posList>
</gml:LinearRing>
</gml:exterior>
</gml:Polygon>
<gml:Polygon xmlns:gml="http://www.opengis.net/gml/3.2" gml:id="POLN1004F2">
<gml:exterior>
<gml:LinearRing>
<gml:posList srsDimension="2">5.86342 180 -13.180367 175.749402 -27.402929
172.044313 -37.983457 168.635021 -46.70575 165.032035 -53.583872 161.287771
-60.31448 156.214145 -65.198574 150.919337 -68.325776 146.238267 -69.833011
143.408601 -72.68634 136.414694 -74.003946 132.064691 -76.316313 121.114386
-77.994851 106.595877 -78.752838 88.93359 -78.408579 70.635228 -77.840638
62.263658 -76.073449 48.176348 -73.70415 37.605582 -70.955567 29.784574 -
68.833389 25.410055 -71.395897 10.531073 -73.798945 13.549547 -77.064662
19.409287 -78.635454 23.484612 -80.138583 28.76103 -81.53812 35.77544 -
82.773822 45.282798 -83.747956 58.115927 -84.324346 74.475206 -84.379346
92.704855 -83.89886 109.640667 -82.992149 123.200212 -81.799327 133.306555 -
80.426659 140.749386 -78.940803 146.321501 -77.381562 150.602066 -75.772914
153.979897 -72.461612 158.973041 -67.361744 163.939913 -60.437968 168.253072
-51.682985 171.934458 -39.323454 175.681849 -21.10288 180 5.86342
180</gml:posList>
</gml:LinearRing>
</gml:exterior>
</gml:Polygon>
</gml:surfaceMembers>
</gml:MultiSurface>

```

```
</georss:where>
```

CEOS-BP-014C – GeorSS multi-point¹⁰ footprint [Recommended]

For representing geographical extent consisting of a multiple points in GeoRSS in the search result, it is recommended to use “GeoRSS GML” with a <gml:MultiPoint> element containing multiple <gml:Point> elements.

E.g.

```
<georss:where>
<gml:MultiPoint gml:id="MULTIPOINTN10051">
<gml:pointMember xmlns:gml="http://www.opengis.net/gml/3.2">
<gml:Point gml:id="POINTN100511">
  <gml:pos srsDimension="2">49.695066 -136.337212</gml:pos>
</gml:Point>
</gml:pointMember>
<gml:pointMember xmlns:gml="http://www.opengis.net/gml/3.2">
<gml:Point gml:id="POINTN100512">
  <gml:pos srsDimension="2">49.699539 -136.322377</gml:pos>
</gml:Point>
</gml:pointMember>
</gml:MultiPoint>
</georss:where>
```

CEOS-BP-014D – GeorSS multi-line¹¹ footprint [Recommended]

For representing geographical extent consisting of a multiple lines in GeoRSS in the search result, it is recommended to use “GeoRSS GML” with a <gml:MultiGeometry> element containing multiple <gml:LineString> elements.

E.g.

```
<georss:where>
<gml:MultiGeometry gml:id="MULGN10051">
<gml:geometryMembers>
<gml:LineString xmlns:gml="http://www.opengis.net/gml/3.2"
gml:id="IDLSEN100511">
<gml:posList srsDimension="2">-34.7796 102.055 -39.7836 100.515 -44.2692
98.9729 -48.3553 97.3886 -51.9754 95.7923 -55.3822 94.068 -58.412 92.2924 -
```

¹⁰ E.g. applicable for observations by the ENVISAT GOMOS (spectrometer) sensor.

¹¹ E.g. applicable for observations by the ENVISAT RA2 (altimeter) sensor.

```

61.1428 90.4304 -63.6322 88.4441 -65.8898 86.3242 -67.9982 83.9763 -69.8558
81.5103 -71.5184 78.8761 -73.0474 75.9704 -74.3819 72.9188 -75.614 69.5145 -
76.7237 65.7785 -77.9708 60.4664 -79.0444 54.4087 -79.9152 47.7539 -80.6
40.4392 -81.1113 32.2753 -81.4307 23.3304 -81.5365 14.3493 -81.4318 5.02661
-81.1431 -3.30081 -80.6707 -11.1964 -80.0251 -18.4329 -79.2102 -24.9842 -
78.226 -30.8705 -77.0688 -36.1379 -75.7236 -40.8685 -74.1629 -45.1503 -
73.2589 -47.2138 -72.3029 -49.1436 -71.2517 -51.0222 -70.1403 -52.7826 -
68.9422 -54.4681 -67.6573 -56.0757 -66.3226 -57.5657 -64.8832 -59.0038 -
63.3576 -60.3703 -61.7367 -61.6756 -59.9729 -62.9543 -58.1039 -64.1764 -
54.0024 -66.4875 -49.3644 -68.6552 -44.8535 -70.4491 -39.7916 -72.203 -
34.1674 -73.9239 -27.8413 -75.6594 -21.7536 -77.1911 -14.7287 -78.8462
10.7406 -84.4874 20.603 -86.7673 30.2014 -89.2029 38.2408 -91.5353 42.4808 -
92.9324 46.3141 -94.3356 49.8689 -95.7931 53.1354 -97.306 56.143 -98.8914
58.8823 -100.545 61.3447 -102.255 63.6636 -104.118 66.1536 -106.482 68.3495
-108.991 70.3257 -111.72 72.0557 -114.616 73.5855 -117.724 74.9991 -121.234
76.2585 -125.092 77.3546 -129.258 78.3368 -133.933 79.1907 -139.099 79.9051
-144.681 80.502 -150.861 80.9664 -157.523 81.2974 -164.657 81.4918 -172.36
81.5337 -180</gml:posList>
</gml:LineString>
<gml:LineString xmlns:gml="http://www.opengis.net/gml/3.2"
gml:id="IDLSN100512">
<gml:posList srsDimension="2">81.5337 180 81.4334 172.547 81.1894 165.185
80.8255 158.488 80.3222 152.047 79.7197 146.336 78.9612 140.832 78.0981
135.945 77.1125 131.509 76.0023 127.49 74.7475 123.806 73.3589 120.476
71.7874 117.381 70.0151 114.507 68.0696 111.896 65.832 109.403 63.451
107.187 61.3014 105.475 58.5991 103.615 55.742 101.919 52.7419 100.365
49.454 98.8658 45.7702 97.3789 41.7777 95.9426 37.3975 94.5253 29.3939
92.238 19.8126 89.8302 10.317 87.6446 -13.1049 82.4689 -24.0868 79.8694 -
33.8473 77.2688 -38.0684 76.0048 -42.0022 74.718</gml:posList>
</gml:LineString>
</gml:geometryMembers>
</gml:MultiGeometry>
</georss:where>

```

CEOS-DG-020 – Minimum-bounding rectangle [Optional]

CEOS OpenSearch implementations should render spatial extents using a minimum-bounding rectangle (MBR) with a <georss:box> element in addition to the native more accurate representation of that extent with GeorSS Simple or GeorSS GML.

Note that clients can distinguish the MBR from the native extent as georss:box is not to be used for representing a native spatial extent.

CEOS-BP-015 - Browse image [Recommended]

CEOS OpenSearch implementations are recommended to provide a URL to the granule's browse image when available, by either `atom:link@rel="icon"` or Media RSS (e.g. `media:content/media:Category=QUICKLOOK`).

CEOS-BP-015B – Multiple browse images [Optional]

CEOS OpenSearch implementations are recommended to provide the URLs to the granule's browse images when available, by either including multiple `atom:link@rel="icon"` or including multiple Media RSS `<media:group>` elements.

In case Media RSS is used, then `<media:group>` elements should only group `<media:content>` elements which are representations of the same content. Therefore, it is recommended in this case to provide the URL to the browse images via multiple `<media:group>` elements as defined in [OGC 13-026r5], when a single granule has multiple browse images (See also multi-polygon footprint).

E.g.

```
<feed xmlns="http://www.w3.org/2005/Atom
xmlns:media="http://search.yahoo.com/mrss/" ...>
...
<entry>
...
  <media:group>
    <media:content
url="http://foo.ceos.org/browse/ABC/2012/08/01/PASS_ABC_210671_3_32488_1.jpg
" type="image/jpeg" medium="image">
      <media:category
scheme="http://www.opengis.net/spec/EOMPOM/1.0">QUICKLOOK</media:category>
    </media:content>
  </media:group>
  <media:group>
    <media:content
url="http://foo.ceos.org/browse/ABC/2012/08/01/PASS_ABC_210671_3_32488_2.jpg
" type="image/jpeg" medium="image">
      <media:category
scheme="http://www.opengis.net/spec/EOMPOM/1.0">QUICKLOOK</media:category>
    </media:content>
  </media:group>

</entry>
```

CEOS-BP-016 - Data access [Recommended]

CEOS OpenSearch implementations are recommended to use Atom link elements with an attribute rel="enclosure" along with a MIME type attribute type="xxx" for embedding data access URL in granule level search responses.

The above data access URL should also be applied in case multiple files are available for data access through a single .ZIP file or via a Metalink¹² file. If multiple physical files cannot be grouped however, the mechanism below can be used instead.

CEOS-BP-016B - Data access to multiple files [Optional]

When data access to a granule in a granule search response is to be provided in multiple physical files, each file should be linked to via a separate Atom link element. Each of these links should have an attribute rel="section" along with a MIME type attribute type="xxx" for embedding the data access URL to each file¹³.

2.5 Exceptions

CEOS-BP-017 - Exception codes [Recommended]

OpenSearch Geo and Time Extensions [OGC 10-032r8] recommends the use of HTTP status codes as following, 4xx for client errors, and 5xx for server errors.

- 400 Bad Request: The request has an invalid syntax (i.e. badly formatted geometry)
- 413 Request Entity Too Large: The request originates too many returnable hits
- 415 Unsupported media type: Media type in the request is not available or valid.
- 500 Internal Server Error: Default code for the server side for an execution error.
- 501 Not Implemented: When requesting an unimplemented feature (e.g. relation operator not supported).
- 503 Service Unavailable: When the search service is temporarily not available (due to overload or other reasons).
- 504 Gateway Timeout: When the search engine is a broker or aggregator to other services that fail to produce an answer within a giving time frame.

CEOS OpenSearch implementations are recommended to support these codes.

2.6 Future discussions

Future discussion topics include the following.

- Sorting, ranking / relevance score
- Aggregation of multiple source results at client side
- Recommended Schema.org itemtype/itemprop to be used for granule metadata and collection metadata

¹² <https://tools.ietf.org/html/rfc5854>

¹³ This requirement is equivalent to TG Requirement 32 in [INSPIRE].

3 Closer look on implementations

This chapter shows comparison among implementations : CWIC, FedEO, and CNES. (other implementations may be added in the future)

Note: CNES endpoints will not be available until january 2015

3.1 Basics

3.1.1 OSDD URL

3.1.1.1 Collection Level

IDN/CWIC	<a href="http://gcmd.nasa.gov/KeywordSearch/default/openSearch.jsp?Portal=cwic&clientId=<your client id here>">http://gcmd.nasa.gov/KeywordSearch/default/openSearch.jsp?Portal=cwic&clientId=<your client id here>
FedEO	http://fedeo.esa.int/opensearch/description.xml (rel="collection")
CNES	http://theia.cnes.fr/resto/api/collections/describe.xml

3.1.1.2 Granule Level (examples)

IDN/CWIC	<ul style="list-style-type: none"> • http://cwic.wgiss.ceos.org/opensearch/datasets/osdd.xml?clientId=cwicClient • http://cwic.wgiss.ceos.org/opensearch/datasets/Landsat_8/osdd.xml?clientId=cwicClient
FedEO	<ul style="list-style-type: none"> • Option 1 (specific) http://fedeo.esa.int/opensearch/description.xml?parentIdentifier={dataset-id} • Option 2 (general) http://fedeo.esa.int/opensearch/description.xml (rel="results" - default) • Example 1 http://fedeo.esa.int/opensearch/description.xml?parentIdentifier=EOP%3AVITO%3AVGT_S10 • Example 2: http://fedeo.esa.int/opensearch/description.xml?parentIdentifier=MIR_SC_F0
CNES	http://theia.cnes.fr/resto/api/collections/{collection}/describe.xml where {collection} should be replaced by the name of the collection (e.g. Landsat)

3.1.2 Search URL

3.1.2.1 Collection Level

IDN/CWIC	http://gcmd.gsfc.nasa.gov/KeywordSearch/OpenSearch.do?searchTerms=Landsat*&MetadataType=0&output=atom&Portal=cwic&clientId=fromgcmd
----------	---

FedEO	http://fedeo.esa.int/opensearch/request/?httpAccept=application/atom%2Bxml&query=landsat Note: parentIdentifier=EOP:ESA:FEDEO is default value for EOP:ESA:FEDEO "parentIdentifier" and can be added to request above. application/atom+xml is the default value for the httpAccept parameter.
CNES	http://theia.cnes.fr/resto/api/collections/search.atom?q=Landsat

3.1.2.2 Granule Level (examples)

IDN/CWIC	http://cwic.wgiss.ceos.org/opensearch/granules.atom?datasetId=Landsat_8&startPage=1&count=10&timeStart=&timeEnd=&geoBox=&clientId=cwicClient
FedEO	http://fedeo.esa.int/opensearch/request/?httpAccept=application%2Fatom%2Bxml&parentIdentifier=EOP%3ASPOT%3AMULTISPECTRAL_10m&startRecord=1&startDate=2013-09-13T00%3A00%3A00Z&endDate=2013-09-16T10%3A00%3A59Z&instrumentShortName=HRGNb1&bbox=3.711001014709498%2C44.549828243256%2C22.617251014709005%2C52.987328243256
CNES	http://theia.cnes.fr/resto/api/collections/Landsat/search.atom?lang=en&q=images%20acquired%20in%20may%202013%20over%20Paris

3.1.3 Documents

IDN/CWIC	<ul style="list-style-type: none"> • CWIC Client Partner Guide (OpenSearch) v0.9 • CWIC Data Partner's Guide (OpenSearch) v0.9 • CWIC Software Exception Handling v1.2
FedEO	<ul style="list-style-type: none"> • FEDEO Client Partner Guide (v1.0)
CNES	<ul style="list-style-type: none"> • http://github.com/jjrom/resto

3.2 Remarkable Practices

3.2.1 OSDD

3.2.1.1 Support of parameter extension

IDN/CWIC	YES Note: Recommended attributes are “name”, “value”, “title”. “uiDisplay” will be an optional attribute in the future.
FedEO	YES
CNES	YES

3.2.1.2 Support of Explain operation (SRU)

The Explain document (from the OASIS SearchRetrieve standard) provides additional metadata about the search endpoint, the parameters accepted by the search endpoint and the possible response schemas. It fulfils a similar role as an OGC Capabilities document.

IDN/CWIC	NO
FedEO	YES
CNES	NO

3.2.2 Output encoding format in a search URL

IDN/CWIC	resource extension (e.g. description.atom) and content negotiation
FedEO	a search parameter (httpAccept). This search parameter is borrowed from the OASIS SearchRetrieve (and SRU) standard. Note : Other ways i.e. content-negotiation using HTTP header (httpAccept) and resource extension will be supported in the future. Q2 2015)
CNES	resource extension (e.g. search.atom) and content negotiation

3.2.3 Support of 2 step search

IDN/CWIC	YES
FedEO	YES
CNES	YES

3.2.4 Search Parameters

3.2.4.1 Supported Search Parameters

C : Supported in Collection Level search parameter,

G : Supported in Granule Level search parameter

Superscript : M : Mandatory, O : Optional, 1 : dependent on subsidiary catalog

Namespaces prefixes : Table 2 of OGC 10-032r8 and Table2 of OGC 13-026r5.

Search Parameters	IDN/CWIC	FedEO	CNES
count	CG	C	G
searchTerms	C	CG ¹	CG
startIndex		C	CG
startPage	O	CG	CG
dc:publisher		C	
dc:subject		CG ¹	
dc:title		C ¹	
dc:type		C ¹	
time:start	CG	CG	G
time:end	CG	CG	G
geo:box	CG	CG	G
geo:geometry			
geo:lat		CG	G
geo:lon		CG	G
geo:name		CG	G
geo:radius		CG	G
geo:uid		CG	G
eo:acquisitionStation		C ¹ G ¹	
eo:acquisitionType		G ¹	
eo:acquisitionSubType		G ¹	
eo:antennaLookDirection		G ¹	
eo:archivingCenter		G ¹	
eo:cloudCover		G ¹	G

Search Parameters	CWIC	FedEO	CNES
-------------------	------	-------	------

eo:completionTimeFromAscendingNode		G ¹	
eo:compositeType		G ¹	
eo:dopplerFrequency		G ¹	
eo:frame		G ¹	
eo:illuminationAzimuthAngle		G ¹	
eo:illuminationElevationAngle		G ¹	
eo:imageQualityDegradation		G ¹	
eo:incidenceAngleVariation		G ¹	
eo:instrument		CG ¹	G
eo:maximumIncidenceAngle		G ¹	
eo:minimumIncidenceAngle		G ¹	
eo:orbitDirection		G ¹	
eo:orbitNumber		C ¹ G ¹	G
eo:orbitType		G ¹	
eo:organisationName		C	G
eo:parentIdentifier	G (datasetId)	CG ¹	
eo:platformSerialIdentifier		G ¹	
eo:platform		CG ¹	G
eo:polarisationChannels		G ¹	
eo:polarisationMode		G ¹	
eo:processingCenter		C ¹ G ¹	
eo:processingLevel		G ¹	G
eo:processorName		G ¹	
eo:productionStatus		G ¹	
eo:productType		CG ¹	G
eo:resolution		G ¹	G
eo:sensorType		G ¹	
eo:sensorMode		G ¹	
eo:snowCover		G ¹	G
eo:startTimeFromAscendingNode		G ¹	
eo:swathIdentifier		G ¹	

Search Parameters	CWIC	fedEO	CNES
eo:track		C ¹	
semantic:classifiedAs		C	
sru:recordSchema		CG	

3.2.5 Supported output format

IDN/CWIC	ATOM, RSS ¹ , HTML ¹ [1] IDN only
FedEO	ATOM, RSS ¹ , SRU ¹ , RDF/XML ¹ , JSON-LD ² , Turtle ² , HTML ² [1] depends on data partner [2] not advertised in operational environment.
CNES	ATOM, GeoJSON, HTML

3.2.6 Output schema support

IDN/CWIC	NO
FedEO	YES (dc, iso, O&M EOP v1.0 and v1.1)
CNES	NO

3.2.7 Free Keyword notation (searchTerms)

IDN/CWIC	Conveyed by Parameter Extension (Parameter/link@rel="profile")
FedEO	whitespace for AND double quote for phrase
CNES	Natural language queries (e.g. "images over Paris between may and june 2013")

3.2.8 Pagination

IDN/CWIC	startPage, count
FedEO	startIndex, startPage, count

CNES	startIndex, startPage, count
------	------------------------------

3.2.9 Search Result

3.2.9.1 Browse

IDN/CWIC	link@rel="icon"
FedEO	link@rel="icon" also supports Media RSS notation (use of media:content/media:Category=QUICKLOOK)
CNES	link@rel="icon" also supports Media RSS notation (use of media:content/media:Category=QUICKLOOK)

3.2.9.2 Thumbnail

IDN/CWIC	N/A
FedEO	Media RSS notation (use of media:content/media:Category=THUMBNAIL)
CNES	Media RSS notation (use of media:content/media:Category=THUMBNAIL)

3.2.9.3 Mask Image

IDN/CWIC	N/A
FedEO	Media RSS notation (use of media:content/media:Category=MASK)
CNES	N/A

3.2.9.4 Metadata

IDN/CWIC	link@rel="via"
FedEO	link@rel="alternate" or link@rel="via"
CNES	link@rel="via"

3.2.9.5 Documentation

IDN/CWIC	link@rel="describedBy"
FedEO	N/A
CNES	N/A

3.2.9.6 Data

IDN/CWIC	link@rel="enclosure"
FedEO	link@rel="enclosure"
CNES	link@rel="enclosure"

3.2.10 Error Handling

3.2.10.1 Exception Status Code (4xx, 5xx)

IDN/CWIC	Compliant with OGC OpenSearch [OGC 10-032r8]
FedEO	Compliant with OGC OpenSearch [OGC 10-032r8] and OGC OWS Common [OGC 06-121]
CNES	Compliant with OGC OpenSearch [OGC 10-032r8]

Annex A: LIST OF OPENSEARCH ENDPOINTS

This appendix shows OpenSearch endpoints of CEOS agency catalogs.

FedEO	:	http://fedeo.esa.int/opensearch/description.xml
IDN/CWIC	:	<a href="http://gcmd.gsfc.nasa.gov/KeywordSearch/default/openSearch.jsp?Portal=cwic&clientId=<your client id here>">http://gcmd.gsfc.nasa.gov/KeywordSearch/default/openSearch.jsp? Portal=cwic&clientId=<your client id here>
NASA ECHO	:	https://api.echo.nasa.gov:443/opensearch/datasets/ descriptor_document.xml?clientId=xxxxxxx
CNES	:	http://theia.cnes.fr/api/collections/describe.xml

Annex B: EXAMPLES

This appendix contains example code snippets from CEOS agencies' implementations.

ISSUE 5 – Examples in Annex B violating some Best Practices

It should be decided whether the examples in this section should be made compliant with the body of the text, e.g. use of namespaces (georss etc.).

B1. OSDD (Collection Level)

IDN/CWIC

```
http://gcmd.nasa.gov/KeywordSearch/default/openSearch.jsp?Portal=cwic&client  
Id=<your client id here>
```

FedEO

```
http://fedeo.esa.int/opensearch/description.xml
```

CNES

```
http://theia.cnes.fr/resto/api/collections/describe.xml
```

B2. OSDD (Granule Level)

IDN/CWIC

```
http://cwic.wgiss.ceos.org/openserach/datasets/Landsat_8/osdd.xml?clientId=cwicClient
```

FedEO

```
http://fedeo.esa.int/openserach/description.xml?parentIdentifier=EOP:VITO:VGT_S10
```

CNES

```
http://theia.cnes.fr/resto/api/collections/Landsat/describe.xml
```

B3. Search request

IDN/CWIC

```
http://cwic.wgiss.ceos.org/opensearch/granules.atom?datasetId=INPE_CBERS2B_CD&startIndex=2&count=1&timeStart=2007-09-25T00:00:00Z&timeEnd=2010-03-10T00:00:00Z&geoBox=-180,-90,180,90
```

FedEO

```
http://fedeo.esa.int/opensearch/request/?httpAccept=application/atom%2Bxml&parentIdentifier=EOP%3AEGEOS%3AEGEOS%23IKONOS&startDate=2000-10-31T00:00:00Z&maximumRecords=2&cloudCover=10]&endDate=2013-10-31T00:00:00Z&name=frascati&radius=1000
```

CNES

```
http://theia.cnes.fr/resto/api/collections/Landsat/search.atom?q=marseille
```

B4. Search response (Atom)

IDN/CWIC

```
<?xml version="1.0" encoding="UTF-8"?>
<feed xmlns="http://www.w3.org/2005/Atom" xmlns:opensearch="http://a9.com/-
/spec/opensearch/1.1/" xmlns:geo="http://a9.com/-
/opensearch/extensions/geo/1.0/"
xmlns:georss="http://www.georss.org/georss/1.0"
xmlns:dc="http://purl.org/dc/elements/1.1/" xmlns:time="http://a9.com/-
/opensearch/extensions/time/1.0/"
xmlns:cwic="http://cwic.wgiss.ceos.org/opensearch/extensions/1.0/"
xmlns:esipdiscover="http://commons.esipfed.org/ns/discovery/1.2/">
<title>CWIC OpenSearch Response</title>
<updated>2014-09-24T08:47:15Z</updated>
<author>
  <name>CEOS WGISS Integrated Catalog (CWIC) - CWIC Contact - Email: cwic-
help@wgiss.ceos.org - Web: http://wgiss.ceos.org/cwic</name>
  <email>cwic-help@wgiss.ceos.org</email>
</author>
<id>http://cwic.wgiss.ceos.org/opensearch/granules.atom</id>
<link rel="self" type="application/atom+xml"
href="http://cwic.wgiss.ceos.org/opensearch/granules.atom?datasetId=INPE_CBE
RS2B_CCD&startIndex=2&count=1&timeStart=2007-09-
25T00:00:00&timeEnd=2010-03-10T00:00:00&geoBox=-180,-
90,180,90&startPage=1" title="This Request"/>
<link rel="search" type="application/opensearchdescription+xml"
href="http://cwic.wgiss.ceos.org/opensearch/granules.atom" title="Search
this resource"/>
<link rel="next" type="application/atom+xml"
href="http://cwic.wgiss.ceos.org/opensearch/granules.atom?datasetId=INPE_CBE
RS2B_CCD&count=1&startPage=2&geoBox=-180,-
90,180,90&timeStart=2007-09-25T00:00:00&timeEnd=2010-03-10T00:00:00"
title="Next Page"/>
<link rel="first" type="application/atom+xml"
href="http://cwic.wgiss.ceos.org/opensearch/granules.atom?datasetId=INPE_CBE
RS2B_CCD&count=1&startPage=1&geoBox=-180,-
90,180,90&timeStart=2007-09-25T00:00:00&timeEnd=2010-03-10T00:00:00"
title="First Page"/>
<link rel="last" type="application/atom+xml"
href="http://cwic.wgiss.ceos.org/opensearch/granules.atom?datasetId=INPE_CBE
RS2B_CCD&count=1&startPage=62304&geoBox=-180,-
90,180,90&timeStart=2007-09-25T00:00:00&timeEnd=2010-03-10T00:00:00"
title="Last Page"/>
<opensearch:totalResults>62304</opensearch:totalResults>
<opensearch:startPage>1</opensearch:startPage>
<opensearch:itemsPerPage>1</opensearch:itemsPerPage>
```

Comment [1]: Need to be corrected to align with 10-032r8


```

<opensearch:Query role="request" cwic:datasetId="INPE_CBERS2B_CCD"
startPage="1" count="1" geo:box="-180,-90,180,90" time:start="2007-09-
25T00:00Z" time:end="2010-03-10T00:00Z"/>
<!-- Remote search completed in 0 seconds. -->
<entry>
  <title>INPE_CBERS2B_CCD:CB2BCCD16709120100310</title>

<id>http://cwic.wgiss.ceos.org/opensearch/granules.atom?uid=INPE_CBERS2B_CCD
:CB2BCCD16709120100310</id>
  <updated>2010-03-10 14:13:48</updated>
  <author>
    <name>ATUS USERS ASSISTANCE SERVICE - TECHNICAL CONTACT - Rod. Pres.
Dutra, km 40; Cachoeira Paulista, SP 12630-000; Brazil - Email:
atus@dgi.inpe.br - Phone: +55 (12) 3186-9226 - FAX: +55 (12) 3101
1507</name>
    <email>atus@dgi.inpe.br</email>
  </author>
  <georss:box>-52.85260 7.49748 -51.62200 8.62678</georss:box>
  <georss:polygon>7.62109 -52.85260 8.62678 -52.63070 8.50276 -51.62200
7.49748 -51.84660 7.62109 -52.85260</georss:polygon>
  <dc:date>2010-03-10T14:09:45Z/2010-03-10T14:10:01Z</dc:date>
  <link title="Original source metadata" rel="via" type="text/xml"
href="http://www.dgi.inpe.br/cwic/sceneid.php?sceneid=CB2BCCD16709120100310"
/>
  <link title="Alternate metadata URL" rel="alternate" type="text/xml"
href="http://www.dgi.inpe.br/cwic/sceneid.php?sceneid=CB2BCCD16709120100310"
/>
  <link title="Browse image URL" rel="icon" type="image/jpeg"
href="http://www.dgi.inpe.br/CDSR/display.php?TABELA=Browse&PREFIXO=Cber
s&INDICE=CB2BCCD16709120100310"/>
  <link title="Granule ordering URL" rel="alternate" type="text/html"
href="http://www.dgi.inpe.br/CDSR/cart-
cwic.php?SCENEID=CB2BCCD16709120100310"/>
  <summary type="text">Granule metadata for
INPE_CBERS2B_CCD:CB2BCCD16709120100310</summary>
</entry>
<!-- Atom response generation completed in 1ms. -->
</feed>
<!-- OpenSearch response completed in 847ms. -->

```

FedEO

```

<?xml version="1.0" encoding="UTF-8"?>
<feed xmlns="http://www.w3.org/2005/Atom"
xmlns:dc="http://purl.org/dc/elements/1.1/" xmlns:eo="http://a9.com/-
/opensearch/extensions/eo/1.0/" xmlns:geo="http://a9.com/-

```

```

/opensearch/extensions/geo/1.0/" xmlns:georss="http://www.georss.org/georss"
xmlns:media="http://search.yahoo.com/mrss/" xmlns:os="http://a9.com/-
/spec/opensearch/1.1/" xmlns:sru="http://a9.com/-
/opensearch/extensions/sru/2.0/" xmlns:time="http://a9.com/-
/opensearch/extensions/time/1.0/"
xmlns:wrs="http://www.opengis.net/cat/wrs/1.0">
<os:totalResults>8</os:totalResults>
<os:startIndex>1</os:startIndex>
<os:itemsPerPage>2</os:itemsPerPage>
<os:Query count="2"
eo:parentIdentifier="urn:ogc:def:EOP:EGEOS:EGEOS#IKONOS"
geo:box="12.650872,41.812231,12.675008,41.830249" geo:name="frascati"
geo:radius="1000" role="request" startIndex="1" time:end="2013-10-
31T00:00:00Z" time:start="2000-10-31T00:00:00Z"/>
<author>
<name>FEDEO Clearinghouse</name>
</author>
<generator>FEDEO Clearinghouse</generator>
<id>http://fedeo.esa.int/opensearch/request</id>
<title>FEDEO Clearinghouse - Search Response</title>
<updated>2014-09-26T20:46:32Z</updated>
<link
href="http://fedeo.esa.int/opensearch/request/?httpAccept=application/atom%2
Bxml&parentIdentifier=EOP%3AEGEOS%3AEGEOS%23IKONOS&startDate=2000-
10-31T00:00:00Z&maximumRecords=2&cloudCover=10]&endDate=2013-10-
31T00:00:00Z&name=frascati&radius=1000" rel="self"
type="application/atom+xml"/>
<link
href="http://fedeo.esa.int/opensearch/request/?httpAccept=application/atom%2
Bxml&parentIdentifier=EOP%3AEGEOS%3AEGEOS%23IKONOS&startDate=2000-
10-31T00:00:00Z&maximumRecords=2&cloudCover=10]&endDate=2013-10-
31T00:00:00Z&name=frascati&radius=1000&startRecord=1"
rel="first" type="application/atom+xml"/>
<link
href="http://fedeo.esa.int/opensearch/request/?httpAccept=application/atom%2
Bxml&parentIdentifier=EOP%3AEGEOS%3AEGEOS%23IKONOS&startDate=2000-
10-31T00:00:00Z&maximumRecords=2&cloudCover=10]&endDate=2013-10-
31T00:00:00Z&name=frascati&radius=1000&startRecord=3" rel="next"
type="application/atom+xml"/>
<link
href="http://fedeo.esa.int/opensearch/request/?httpAccept=application/atom%2
Bxml&parentIdentifier=EOP%3AEGEOS%3AEGEOS%23IKONOS&startDate=2000-
10-31T00:00:00Z&maximumRecords=2&cloudCover=10]&endDate=2013-10-
31T00:00:00Z&name=frascati&radius=1000&startRecord=7" rel="last"
type="application/atom+xml"/>
<link href="http://fedeo.esa.int/opensearch/description.xml" rel="search"
type="application/opensearchdescription+xml"/>
<entry>

```

```

<id>http://fedeo.esa.int/opensearch/request/?httpAccept=application/atom%2Bxml&parentIdentifier=urn%3Aogc%3Adef%3AEOp%3AEGEOS%3AEGEOS%23IKONOS&uid=urn%3Aogc%3Adef%3AEOp%3AEGEOS%3AEGEOS%23IKONOS%3A20010814095358600000116244062000010418104THC&recordSchema=server-choice</id>
<link
href="http://fedeo.esa.int/opensearch/request/?httpAccept=application/atom%2Bxml&parentIdentifier=urn%3Aogc%3Adef%3AEOp%3AEGEOS%3AEGEOS%23IKONOS&uid=urn%3Aogc%3Adef%3AEOp%3AEGEOS%3AEGEOS%23IKONOS%3A20010814095358600000116244062000010418104THC&recordSchema=server-choice" rel="alternate"
title="URL for retrieving full details of the product:
urn:ogc:def:EOP:EGEOS:EGEOS#IKONOS:20010814095358600000116244062000010418104THC" type="application/atom+xml"/>
<published>2001-08-14T09:53:58Z</published>
<dc:identifier>urn:ogc:def:EOP:EGEOS:EGEOS#IKONOS:20010814095358600000116244062000010418104THC</dc:identifier>
<title>urn:ogc:def:EOP:EGEOS:EGEOS#IKONOS:20010814095358600000116244062000010418104THC</title>
<updated>2014-09-26T20:46:32Z</updated>
<summary type="html"><![CDATA[
<table>
<tr>
<td valign="top">
<a
href="http://geofuse.geoeye.com/static/browse/ikonos/2/kpms/2001/08/2001081409535860000011624406_4.jpg" target="_blank" title="View browse image">

</a>
</td>
<td valign="top">
<table>
<tr valign="top">
<td>
<b>Platform Short Name</b>
</td>
<td>IKONOS</td>
</tr>
<tr valign="top">
<td>
<b>Platform Serial Identifier</b>
</td>
<td>IKONOS-2</td>
</tr>
<tr valign="top">
<td>
<b>Sensor Type</b>
</td>

```

```

<td>OPTICAL</td>
</tr>
<tr valign="top">
<td>
<b>Sensor Operational Mode</b>
</td>
<td>PAN/MSI</td>
</tr>
<tr valign="top">
<td>
<b>Sensor Resolution</b>
</td>
<td>0.98</td>
</tr>
<tr>
<td>
<b>Media Type</b>
</td>
<td>
<a
href="http://fedeo.esa.int/opensearch/request/?httpAccept=application/atom%2Bxml&parentIdentifier=urn%3Aogc%3Adef%3Aeop%3Aegeos%3Aegeos%23IKONOS&uid=urn%3Aogc%3Adef%3Aeop%3Aegeos%3Aegeos%23IKONOS%3A20010814095358600000116244062000010418104THC&recordSchema=server-choice" title="Atom format">ATOM</a>
| <a
href="http://fedeo.esa.int/opensearch/request/?httpAccept=application/rss%2Bxml&parentIdentifier=urn%3Aogc%3Adef%3Aeop%3Aegeos%3Aegeos%23IKONOS&uid=urn%3Aogc%3Adef%3Aeop%3Aegeos%3Aegeos%23IKONOS%3A20010814095358600000116244062000010418104THC&recordSchema=server-choice" title="RSS format">RSS</a>
| <a
href="http://fedeo.esa.int/opensearch/request/?httpAccept=application/sru%2Bxml&parentIdentifier=urn%3Aogc%3Adef%3Aeop%3Aegeos%3Aegeos%23IKONOS&uid=urn%3Aogc%3Adef%3Aeop%3Aegeos%3Aegeos%23IKONOS%3A20010814095358600000116244062000010418104THC&recordSchema=server-choice" title="SRU format">SRU</a>
</td>
</tr>
<tr>
<td>
<b>Metadata</b>
</td>
<td>
<a
href="http://fedeo.esa.int/opensearch/request/?httpAccept=application/gml%2Bxml&parentIdentifier=urn%3Aogc%3Adef%3Aeop%3Aegeos%3Aegeos%23IKONOS&uid=urn%3Aogc%3Adef%3Aeop%3Aegeos%3Aegeos%23IKONOS%3A20010814095358600000116

```

```

244062000010418104THC&amp;recordSchema=server-choice" title="O&amp;M
format">O&amp;M</a>
</td>
</tr>
</table>
</td>
<td valign="top">
<table>
<tr valign="top">
<td>
<b>Start Date</b>
</td>
<td>2001-08-14T09:53:58.00Z</td>
</tr>
<tr valign="top">
<td>
<b>End Date</b>
</td>
<td>2001-08-14T09:54:02.00Z</td>
</tr>
</table>
</td>
</tr>
</table>]]></summary>
<link
href="http://fedeo.esa.int/opensearch/request?httpAccept=application/gml%2Bx
ml&amp;parentIdentifier=urn%3Aogc%3Adef%3AEOP%3AEGEOS%3AEGEOS%23IKONOS&amp;u
id=urn%3Aogc%3Adef%3AEOP%3AEGEOS%3AEGEOS%23IKONOS%3A200108140953586000001162
44062000010418104THC&amp;recordSchema=om" rel="alternate"
type="application/gml+xml"/>
<link
href="http://fedeo.esa.int/opensearch/request?httpAccept=application/gml%2Bx
ml&amp;parentIdentifier=urn%3Aogc%3Adef%3AEOP%3AEGEOS%3AEGEOS%23IKONOS&amp;u
id=urn%3Aogc%3Adef%3AEOP%3AEGEOS%3AEGEOS%23IKONOS%3A200108140953586000001162
44062000010418104THC&amp;recordSchema=om11" hreflang="en" rel="alternate"
type="application/gml+xml"/>
<link
href="http://geofuse.geoeye.com/static/browse/ikonos/2/kpms/2001/08/20010814
09535860000011624406_4.jpg" rel="icon" type="image/jpeg"/>
<georss:polygon xmlns:gml="http://www.opengis.net/gml">41.7496192380002
12.6632663830001 41.7518167270001 12.6084605380001 41.7540093100001
12.5561940820002 41.7563784120001 12.5010395270002 41.8224882260001
12.5004800220001 41.8887371270001 12.4994988630002 41.8864556400001
12.5547515790001 41.8844161960001 12.6068495140001 41.8822238410002
12.6620891320001 41.8157604600001 12.6632254980001 41.7496192380002
12.6632663830001</georss:polygon>
<media:group>
<media:content medium="image" type="image/jpeg"

```

```

url="http://geofuse.geoeye.com/static/browse/ikonos/2/kpms/2001/08/200108140
953586000011624406_4.jpg">
<media:category
scheme="http://www.opengis.net/spec/EOMPOM/1.0">QUICKLOOK</media:category>
</media:content>
</media:group>
</entry>

...
</feed>

```

CNES

```

<?xml version="1.0" encoding="UTF-8"?>
<feed xml:lang="en" xmlns="http://www.w3.org/2005/Atom"
xmlns:time="http://a9.com/-/opensearch/extensions/time/1.0/"
xmlns:os="http://a9.com/-/spec/opensearch/1.1/"
xmlns:dc="http://purl.org/dc/elements/1.1/"
xmlns:georss="http://www.georss.org/georss"
xmlns:gml="http://www.opengis.net/gml" xmlns:geo="http://a9.com/-
/opensearch/extensions/geo/1.0/" xmlns:eo="http://a9.com/-
/opensearch/extensions/eo/1.0/"
xmlns:metalink="urn:ietf:params:xml:ns:metalink"
xmlns:xlink="http://www.w3.org/1999/xlink"
xmlns:media="http://search.yahoo.com/mrss/">
<title></title>
<subtitle type="html">&nbsp;|&nbsp;_pagination</subtitle>
<generator uri="http://mapshup.com" version="2.0">resto</generator>
<updated>2014-12-15T12:29:34+0100</updated>
<id>7071ea35-308e-5149-a56d-ad6d8e9368d0</id>
<link rel="self" title="self" type="application/atom+xml"
href="http://theia.cnes.fr/resto/api/collections/Landsat/search.atom?q=marse
ille&lang=fr&maxRecords=1"/>
<link rel="search" title="_osddLink"
type="application/opensearchdescription+xml"
href="http://theia.cnes.fr/resto/api/collections/Landsat/describe.xml"/>
<link rel="next" title="next" type="application/atom+xml"
href="http://theia.cnes.fr/resto/api/collections/Landsat/search.atom?q=marse
ille&lang=fr&maxRecords=1&page=2"/>
<os:startIndex>1</os:startIndex>
<os:itemsPerPage>1</os:itemsPerPage>
<os:Query role="request" searchTerms="marseille" language="fr" count="1"/>
<entry>
<id>4cbcb52c-395c-5d86-862b-41ff4349b2b6</id>
<dc:identifier>4cbcb52c-395c-5d86-862b-41ff4349b2b6</dc:identifier>

```

```

<title></title>
<published>2014-11-25T17:08:48Z</published>
<updated>2014-11-25T17:08:48Z</updated>
<dc:date>2014-10-30T10:17:51Z/2014-10-30T10:17:51Z</dc:date>
<gml:validTime>
  <gml:TimePeriod>
    <gml:beginPosition>2014-10-30T10:17:51Z</gml:beginPosition>
    <gml:endPosition>2014-10-30T10:17:51Z</gml:endPosition>
  </gml:TimePeriod>
</gml:validTime>
<georss:where>
  <gml:Polygon>
    <gml:exterior>
      <gml:LinearRing>
        <gml:posList srsDimensions="2">43.9830355963 4.24846182664
43.9587914693 5.61895825622 42.9696032211 5.57428279738 42.9934166847
4.22715319234 43.9830355963 4.24846182664</gml:posList>
      </gml:LinearRing>
    </gml:exterior>
  </gml:Polygon>
</georss:where>
  <link rel="alternate" type="alternate" title="Lien HTML pour 4cbcb52c-
395c-5d86-862b-41ff4349b2b6"
href="http://theia.cnes.fr/resto/collections/Landsat/4cbcb52c-395c-5d86-
862b-41ff4349b2b6.html?lang=fr"/>
  <link rel="alternate" type="alternate" title="Lien GeoJSON pour 4cbcb52c-
395c-5d86-862b-41ff4349b2b6"
href="http://theia.cnes.fr/resto/collections/Landsat/4cbcb52c-395c-5d86-
862b-41ff4349b2b6.json?lang=fr"/>
  <link rel="alternate" type="alternate" title="Lien ATOM pour 4cbcb52c-
395c-5d86-862b-41ff4349b2b6"
href="http://theia.cnes.fr/resto/collections/Landsat/4cbcb52c-395c-5d86-
862b-41ff4349b2b6.atom?lang=fr"/>
  <link rel="via" type="via" title="_metadataLink"
href="http://spirit.cnes.fr/landsat/md/LANDSAT8_OLITIRS_XS_20141030_N2A_Fran
ce-MetropoleD0008H0002.xml"/>
  <link rel="enclosure" type="application/x-gzip" length="0" title="File for
4cbcb52c-395c-5d86-862b-41ff4349b2b6 product" metalink:priority="50"
href="http://theia.cnes.fr/resto/collections/Landsat/4cbcb52c-395c-5d86-
862b-41ff4349b2b6/download"/>
  <link rel="icon" title="Browse image URL for 4cbcb52c-395c-5d86-862b-
41ff4349b2b6 product"
href="http://spirit.cnes.fr/landsat/ql/LANDSAT8_OLITIRS_XS_20141030_N2A_Fran
ce-MetropoleD0008H0002.png"/>
  <media:group>
    <media:content
url="http://spirit.cnes.fr/landsat/ql/LANDSAT8_OLITIRS_XS_20141030_N2A_Franc
e-MetropoleD0008H0002_thumb.png" medium="image">

```

Comment [y2]: ADV21: Invalid media type ?

```
<media:category
scheme="http://www.opengis.net/spec/EOMPOM/1.0">THUMBNAIL</media:category>
</media:content>
<media:content
url="http://spirit.cnes.fr/landsat/ql/LANDSAT8_OLITIRS_XS_20141030_N2A_Franc
e-MetropoleD0008H0002.png" medium="image">
  <media:category
scheme="http://www.opengis.net/spec/EOMPOM/1.0">QUICKLOOK</media:category>
  </media:content>
</media:group>
  <summary type="text">LANDSAT8/OLITIRS acquise en 2014-10-
30T10:17:51Z</summary>
</entry>
</feed>
```


Annex C: SEARCH-ENGINE-FRIENDLY CATALOG

This appendix gives some hint to make a catalog Search-Engine-Friendly with schema.org

Only Atom format is required as an output format response. However, for implementations that support also HTML as an output format, it is recommended to use schema.org within the provided HTML response.

Additionally there are numerous ways in which that HTML can be designed to make it visible to search engines and, therefore, a searcher interested in earth science data.

Schema.org provides a means to expose datasets in search engine results that is explicitly geared towards earth science datasets (<https://schema.org/Dataset>). Implementers can mark up their HTML in a manner that allows crawlers to index their data in terms of a variety of parameters including spatial and temporal extent. The following subsections illustrate the use of the schema.org vocabulary along with microdata and JSON-LD. For more information, please refer to [schema.org].

C1. Using Microdata

For example:

```
<li itemscope itemtype='http://schema.org/Dataset'>
  <span itemprop='alternateName'>doi:10.3334/ORNLDAAC/1</span>
  <span itemprop='version' >1</span>
  <span itemprop='provider' >ORNL_DAAC</span>
  <div itemprop='description' >ABSTRACT: USGS 15 minute stream flow data for
Kings Creek on the Konza Prairie</div>
  <span itemprop='temporal' >2000-01-01T00:00:00Z</span>
  <span itemprop='spatial' >-55.0 -180.0 90.0 180.0</span>
</li>
```

And another example :

```
<ul class='results' itemscope itemtype='http://schema.org/DataCatalog'>
  <li class="dataset" itemscope itemtype='http://schema.org/Dataset'>
    <h2 itemprop='name'>15 Minute Stream Flow Data: USGS (FIFE)</h2>
    <span class="uid">C179003030-ORNL_DAAC</span>
    <div class='dataset-identification'><span>Dataset
Information:</span>
      <div class='tuple' >Short name: <span class='value short_name'
itemprop='alternateName' >doi:10.3334/ORNLDAAC/1</span></div>
      <div class='tuple' >Version ID: <span class='value version_id'
```

```

itemprop='version' >1</span></div>
  <div class='tuple' >Data center: <span class='value data_center'
itemprop='provider' >ORNL_DAAC</span></div>
</div>
  <span><div class='temporal'><span>Temporal extent:</span><div
class='tuple'>Start: <span class='start value'>1984-12-
25T00:00:00.000Z</span></div><div class='tuple'>Stop: <span class='stop
value'>1988-03-04T00:00:00.000Z</span></div></div></span>
  <span class='temporal schema_org' itemprop='temporal' >1984-12-
25T00:00:00.000Z/1988-03-04T00:00:00.000Z</span>
  <span><div class='spatial'><span>Spatial extent:</span><div
class='tuple'>Bounding box: <span class='spatial-value value'>39.1 -96.6
39.1 -96.6</span></div><div class='tuple'>Point: <span class='spatial-value
value'>39.1 -96.6</span></div></span></div></span>
  <span class='spatial schema_org' itemprop='spatial' >39.1 -96.6 39.1
-96.6</span>
    <div class='dataset-identification'><span>Description:</span>
      <div class='tuple description' itemprop='description'
>ABSTRACT: USGS 15 minute stream flow data for Kings Creek on the Konza
Prairie</div>
      </div>
    <div>
      <span class='link-title'>Links:</span>
      <ul class='links'>
        <li><a class='dataset_link' href="http://daac.ornl.gov/cgi-
bin/dsvviewer.pl?ds_id=1" itemprop='url' >Data link</a></li>
        <li><a class='dataset_link'
href="http://daac.ornl.gov/FIFE/guides/15_min_strm_flow.html" itemprop='url'
>USGS 15 minute stream flow data for Kings Creek on the Konza Prairie (VIEW
RELATED INFORMATION)</a></li>
        <li><a class='dataset_link'
href="http://gcmd.nasa.gov/getdif.htm?FIFE_STRM_15M" itemprop='url'
>doi:10.3334/ORNLDAAC/1</a></li>
        <li><a class='dataset_link'
href="https://api.echo.nasa.gov:443/catalog-
rest/echo_catalog/datasets/C179003030-ORNL_DAAC.xml" itemprop='url' >Product
metadata</a></li>
      </ul>
    </div>
    <div class="granule-search">
      <a
href="/opensearch/granules?clientId=our_html_ui&dataCenter=ORNL_DAAC&
dataset_cursor=1&dataset_id=15+Minute+Stream+Flow+Data%3A+USGS+%28FIFE%
29&dataset_number_of_results=10&shortName=doi%3A10.3334%2FORNLDAAC%2
F1&spatial_type=bbox
&versionId=1"><span class="ui-state-default ui-corner-all open-search-
button">Granule Search</span></a>

```

```
</div>  
</li>
```

C2. Using JSON-LD

For example:

```
<html>

<head>
<title>Search Results</title>

<script type="application/ld+json">
{
  "@context" : "http://schema.org",
  "@type" : "Dataset",
  "name" : "SeaSat L-Band SAR Level-1 Ellipsoid Geocoded Precision Image (SEA_GEC_1P)",
  "alternateName" : "SEA_GEC_1P",
  "description" : "The SEA_GEC_1P product is generated by geocoding of data processed to the SEA_PRI_1P product specification. Products are generated in UTM map coordinates, with output pixel spacing at 12.5 metres. Geocoding is undertaken on the approximation that all image points lie on the surface of the WGS84 ellipsoid adjusted for a local representative vertical datum. It should be noted that mapping distortions will occur as a consequence of terrain relief.",
  "provider" : {
    "@type" : "Organization",
    "name" : "ESA/ESRIN",
    "address" : {
      "@type" : "PostalAddress"
    },
    "email" : "eohelp@eo.esa.int"
  },
  "publisher" : {
    "@type" : "Organization",
    "name" : "ESA/ESRIN",
    "address" : {
      "@type" : "PostalAddress"
    },
    "email" : "eohelp@eo.esa.int"
  },
  "dateModified" : "1978-07-13T00:00:00Z",
  "keywords" : "FedEO, ESA LDS, ocean, coast, snow, ice, land, Science Keywords > Earth Science > Spectral/Engineering > Visible Wavelengths > Visible Imagery, Science Keywords > Earth Science > Terrestrial Hydrosphere > Snow/Ice > Ice Extent, SEASAT 1, SAR",
  "temporal" : "1978-07-13/1978-10-10",
  "spatial" : {
    "@type" : "Place",
    "geo" : {
      "@type" : "GeoShape",
      "polygon" : "-10.0 -125.0 70.0 -125.0 70.0 20.0 -10.0 20.0 -10.0 -125.0"
    }
  }
}
}
```

```
</script>
```

```
</head>
```

```
</html>
```

Annex D: LIST OF OPEN ISSUES

- NOTE 1 – Summary table to be updated21
- NOTE 2 – Requirement renumbering27
- NOTE 3 – Harmonised platform names?29
- ISSUE 4 – CEOS-DG-014B – exception to preserving complete URL template.....31
- ISSUE 5 – Examples in Annex B violating some Best Practices53

Annex E: TRACEABILITY WITH DEVELOPER GUIDE

This appendix is eventually to be removed when the document is final. It shows which requirements from the CEOS OpenSearch Developer Guide v1.3 have been taken into account in the current document, either fully or partly.

<i>Developer Guide v1.3</i>	<i>Best Practice v1.0.1</i>	<i>Draft Best Practice v1.1</i>	<i>Comment</i>
CEOS-DG-001	CEOS-BP-010 (partly), CEOS-BP-009		No BP requirement to be extracted. How to support Atom is implementation dependent.
CEOS-DG-002	CEOS-BP-003		
CEOS-DG-003	CEOS-BP-002 (more general)		
CEOS-DG-004			
CEOS-DG-005	CEOS-BP-005 (searchTerms)	CEOS-DG-005 (reworded to cover "profile"). CEOS-BP-005 (searchTerms)	Original DG requirement contains two requirements: 1) searchTerms is mandatory, 2) use of profile
CEOS-DG-006		CEOS-DG-006 (reworded)	
CEOS-DG-007		CEOS-DG-007B (client-identification for metrics only, some wording copied)	Original DG requirement is implementation-specific. Propose to cover "client identifier" in BP.
CEOS-DG-008			See DG-007 above.
CEOS-DG-009			Is a general client-side requirement.
CEOS-DG-010	CEOS-BP-005 (searchTerms)		
CEOS-DG-011	CEOS-BP-005.5		
CEOS-DG-012	CEOS-BP-005.6, CEOS-BP-005.7		
CEOS-DG-013	CEOS-BP-005.1, CEOS-BP-005.3		
CEOS-DG-014		CEOS-DG-014A, CEOS-DG-014B	
CEOS-DG-015		CEOS-DG-007B	"propagation to secondary implementation" requirement somewhat unclear

<i>Developer Guide v1.3</i>	<i>Best Practice v1.0.1</i>	<i>Draft Best Practice v1.1</i>	<i>Comment</i>
			and not kept.
CEOS-DG-016	CEOS-BP-005.1, CEOS-BP-005.3		
CEOS-DG-017			Absence of startIndex and itemsPerPage element contradicts [OGC 10-032r8]. Use of subtitle element not consistent with INSPIRE TG Download Service TG Rec 1.
CEOS-DG-018		CEOS-DG-018 (reworded)	
CEOS-DG-019	CEOS-BP-012		
CEOS-DG-020		CEOS-DG-020	
CEOS-DG-021		CEOS-DG-021	
CEOS-DG-022		CEOS-DG-022	

Table 9 – Mapping Developer Guide with Best Practice requirements.