

# JAXA Agency Report

Akari Yoneyama(JAXA)

# NEWS 1

- **MY PROFILE -NICE TO MEET YOU-**
- **DISTRIBUTION SYSTEM G-PORTAL**
- **G-PORTAL/CAT-I**

# Nice to meet you (^m^)/

*Japanese kanji*

- My name is Yoneyama Akari (米山).  
米=rice 山=mountain
- Mainly work with G-Portal
- My home town is Yamanashi which is very close to Mt.fuji
- Love music and cooking.

# G-Portal

- G-Portal is the JAXA satellite Data Dissemination Systems.

[HTTPS://WWW.GPORTAL.JAXA.JP](https://www.gportal.jaxa.jp)

The screenshot shows the G-Portal website interface. At the top left, it says "G-Portal" and "Globe-Portal (BETA)". To the right, there is a login section with fields for "User account:" and "Password:", a "Login" button, and links for "Forgot your password?" and "Forgot your user account?". The JAXA logo and name in Japanese and English are also present. A navigation menu includes "Home", "Search Products", "User registration / Terms", "Operational information", "Link", "Announcement", "Contact", and "Help". A news banner states "Apr. 28, 2015 Jaxa has started providing the GPM Constellation DMSP F19 SSMIS products." The main content area starts with a "Welcome," message and a paragraph about data access. Below this, there are links for "for beginners(movie)", "1.Registration/Login", "2.Physical Quantites", and "3.Spacecrafts/Sensors". A "Search products by theme" section offers two options: "Select by Physical Quantites" and "Select by Spacecrafts/Sensors". Under "Physical Quantites", there is a table of categories and a link to a PDF file. A "FAQ and User manual" section includes links to a tutorial, FAQ, and recommended browser, along with a "Contact Us" section for user feedback.

**G-Portal**  
Globe-Portal (BETA)

User account:   
Password:   
Login  
Forgot your password? [Click here.](#) / Forgot your user account? [Click here.](#)

JAXA 宇宙航空研究開発機構  
Japan Aerospace Exploration Agency  
Japanese English

Home Search Products User registration / Terms Operational information Link Announcement Contact Help

Apr. 28, 2015 Jaxa has started providing the GPM Constellation DMSP F19 SSMIS products.

**Welcome,**  
Almost data are free. After user registration, you can download the data. When you want to get the data together, SFTP is more convenient. Read the user manual in Help Page and try the SFTP.

for beginners(movie)

[1.Registration/Login](#) [2.Physical Quantites](#) [3.Spacecrafts/Sensors](#)

**Search products by theme**  
Select one of the following two themes for search and order.

**Select by Physical Quantites** **Select by Spacecrafts/Sensors**

[What are the physical quantities? \(Open the PDF file.\)](#)

Atmosphere		
<a href="#">Precipitation</a>	<a href="#">Cloud</a>	<a href="#">Water Vapor</a>
<a href="#">Aerosol</a>	<a href="#">Atmospheric Boundary Layer</a>	<a href="#">Radiation Balance</a>

GPM/ DPR, GMI, COMB  
Search  
Mar. 2014 - Current

**FAQ and User manual**  
[Tutorial, FAQ and Recommended Browser and OS.](#)  
**Contact Us**  
[Please leave us your comments or report a problem. Your opinions and comments will help us improve our services.](#)

# Feature of G-Portal

- Cross-search from JAXA's many satellites.
- It provides many JAXA's satellite data with free of charge.
- HTTPS service and SFTP service are available.

# Products List provided by G-Portal

Satellite	Sensor	Processing Level	Satellite	Sensor	Processing Level
TRMM	PR	L1 L2 L3	ADEOS- II	AMSR	L1 L2 L3
	TMI	L1 L2 L3		GLI	L1 L2 L3
	COMB	L2 L3	ADEOS	OCTS	L1 L2 L3
	VIRS	L1		AVINIR <sup>*2</sup>	-
GPM	COMB	L2 L3	MOS-1 <sup>*2</sup>	MESSR	-
	DPR	L2 L3		VTIR	-
	GMI	L1 L2 L3		MSR	-
	KaPR	L1 L2	MOS-1b <sup>*2</sup>	MESSR	-
	KuPR	L1 L2		VTIR	-
	GsMAP	L3		MSR	-
		GPM Constellation	L1	JERS-1 <sup>*2</sup>	VNIR
ALOS <sup>*1</sup>	AVNIR-2	-	SWIR		-
	PALSAR	-	SAR		-
	PRISM	-	ERS-1 <sup>*2</sup>	AMImage	-
AQUA	AMSR-E	L1 L2 L3	GOSAT <sup>*2*3</sup>	TANSO-CAI	L0 L1 L2 L3
				TANSO-FTS	L0 L1 L2 L3 L4

\*1: Only catalogue is disseminated for ALOS. \*2: Only for PI or specified users. \*3: GOSAT higher level products are disseminated by NIES.

\*4 Some products are only for PI or specified users.

- *JERS-1 will start providing to general users in this year.*
- *GCOM-W, GCOM-C, EarthCARE and GOSAT-2 will also be provided in the future.*



*If you have any question about use of G-Portal,  
please contact me or G-Portal support desk.  
**support desk :Z-GPORTAL-SUPPORT@JAXA.jp***

# G-Portal/CATS-I



- **Catalogue Transfer Service Interface. ( a part of the G-Porta)**
- **Providing the catalogues with thumbnails and browses**
- **Supported Interfaces are OpenSearch, ebRIM EO profile and ISO19115.**
- **Providing Catalog of GPM, GSMaP, GPMConstellation satellite of GPM, TRMM, ALOS.**
- **Only specified user can search and obtain catalogue.**

<http://catsi.JAXA.jp/>

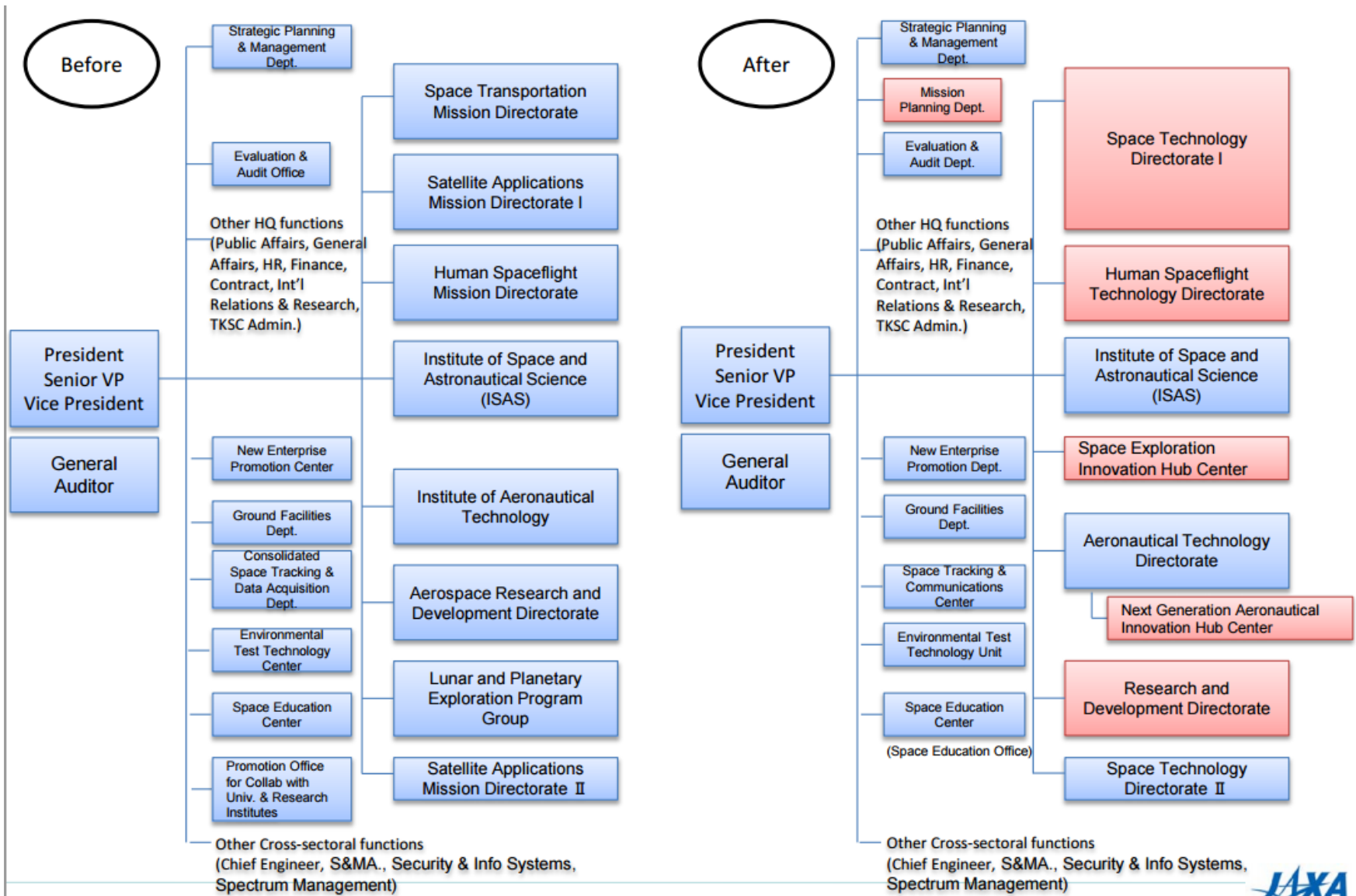
*If there is anyone who want to try to access CATS-I,  
please contact JAXA wgiss member.*



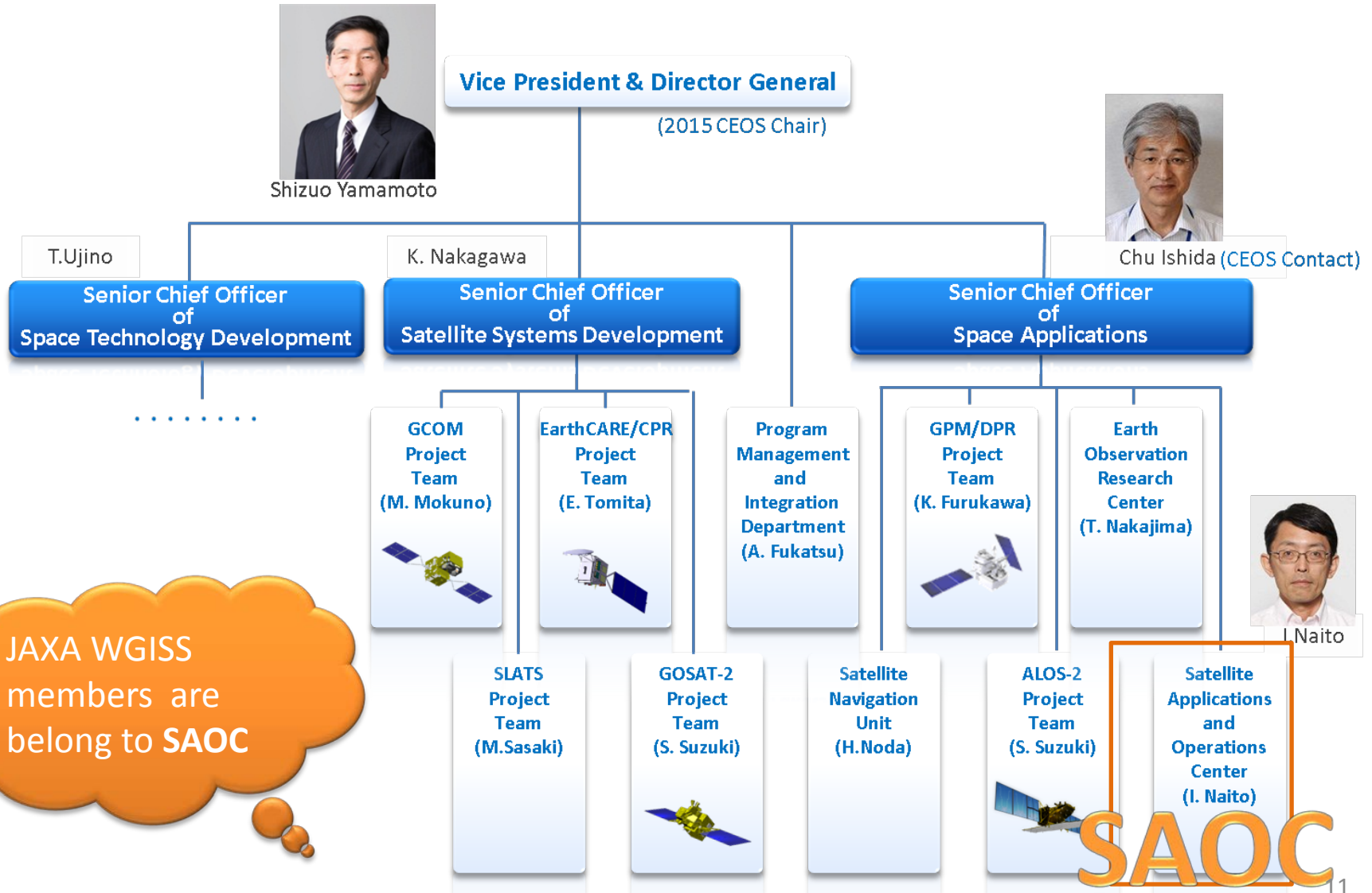
# NEWS 2

- **JAXA'S REORGANIZATION**
- **END UP OF TRMM/PR OBSERVATION**
- **SATELLITE DATA RELEASE**

# JAXA's Reorganization dated April 2015



# Organizational Structure of Space Technology Directorate I



JAXA WGISS members are belong to SAOC

# PR/TRMM completed every mission

- PR/TRMM finished the observation on April 1st, 2015 12:03(UT).
- JAXA completed normal mission operation on October 7, 2014. After that , JAXA had conducted extra experimental operations.
- In the near future, JAXA plan to start the reprocessing and release version 8 products from G-Portal.

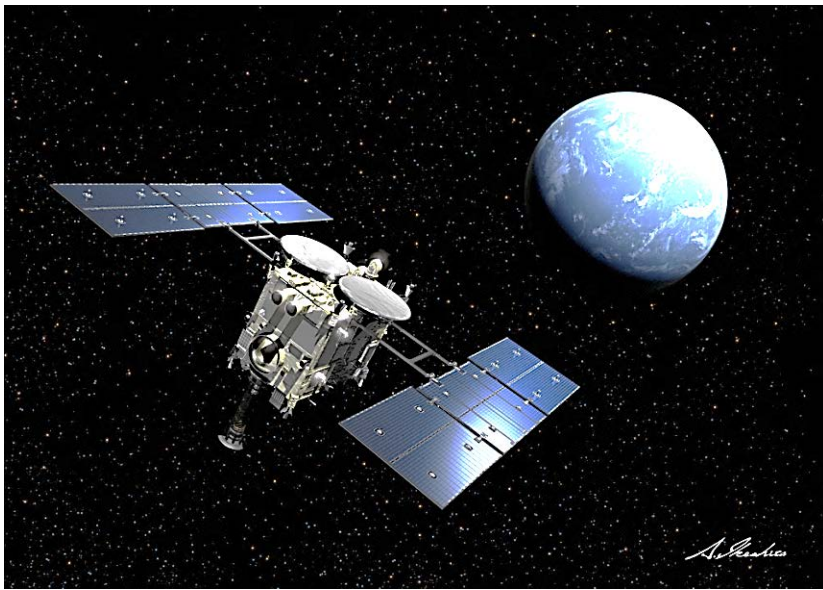


# This year's data release news

- All of GPM products included the past data will be updated to version 04.
- All of JERS-1 products will be reprocessed and provided to general from G-Portal.

# NEWS 3

▪ **OTHER JAXA AGENCY NEWS**



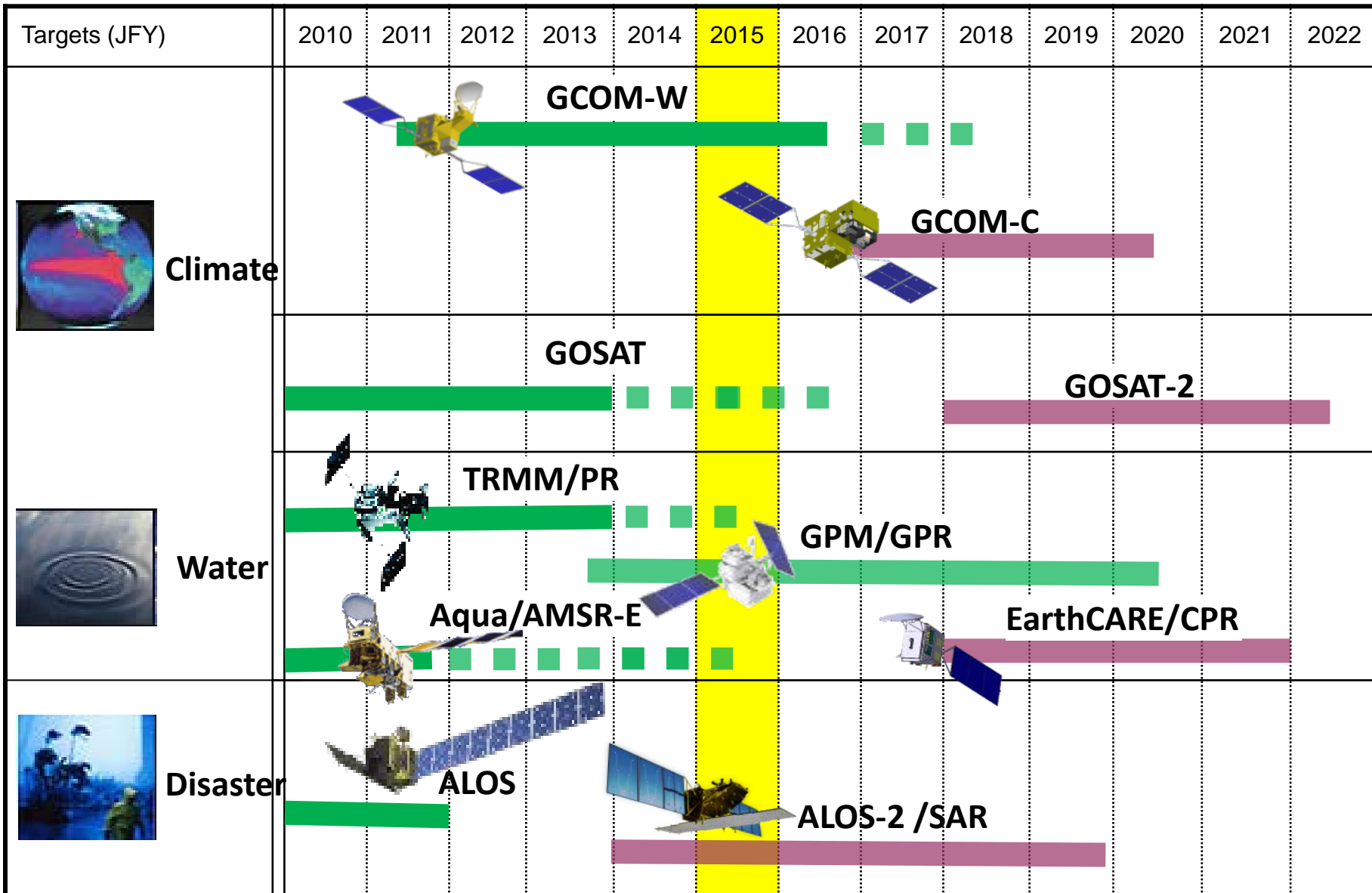
- HAYABUSA-2 (MUSES-C) had be launched on May 10, 2014.
- HAYABUSA-2 will plan for an Earth swing-by and start the explore of the deep space.

▪ ASTRO-H, which explore the structure and evolution of Universe with X-RAY, will be launched on 2015



▪ Astronaut kimiya Yui will stay at the ISS for 6 months from May 27 2015.

# Long-Term Plan of JAXA Earth Observation



Mission status

 On orbit

 Plan

 Extension



Thanks for your attention  
and enjoy a lot of Tsukuba