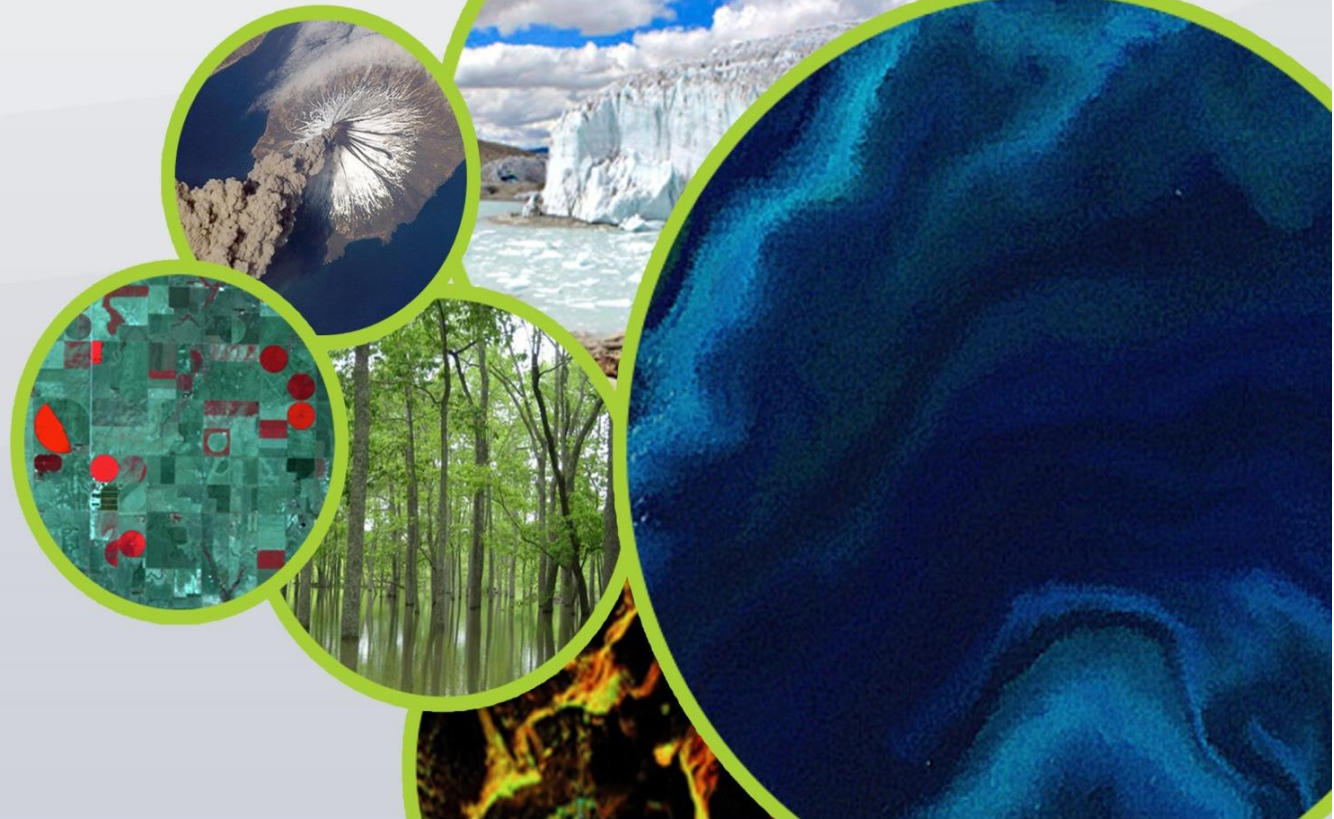


Agency Reports: CONAE



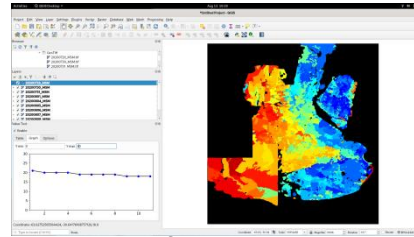
H. Lozza
hlozza@conae.gov.ar

CEOS WGISS-52
Virtual Meeting, October 19-21, 2021

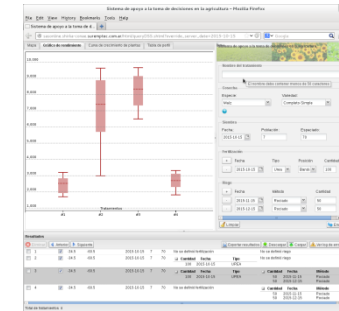
SAOCOM enables Surface Soil Moisture (SM) monitoring at plot scale.

The project promotes to add value by releasing open access products.

✓ Root soil water content.



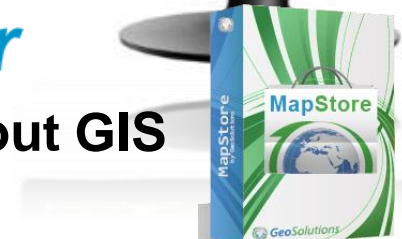
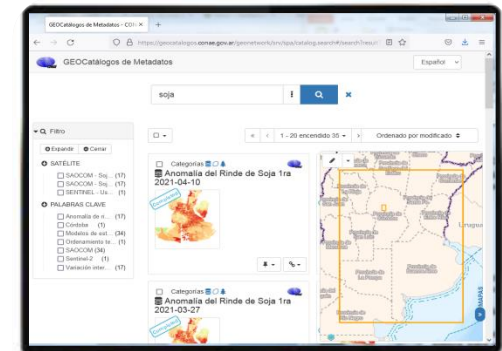
✓ Decision support systems for agriculture.

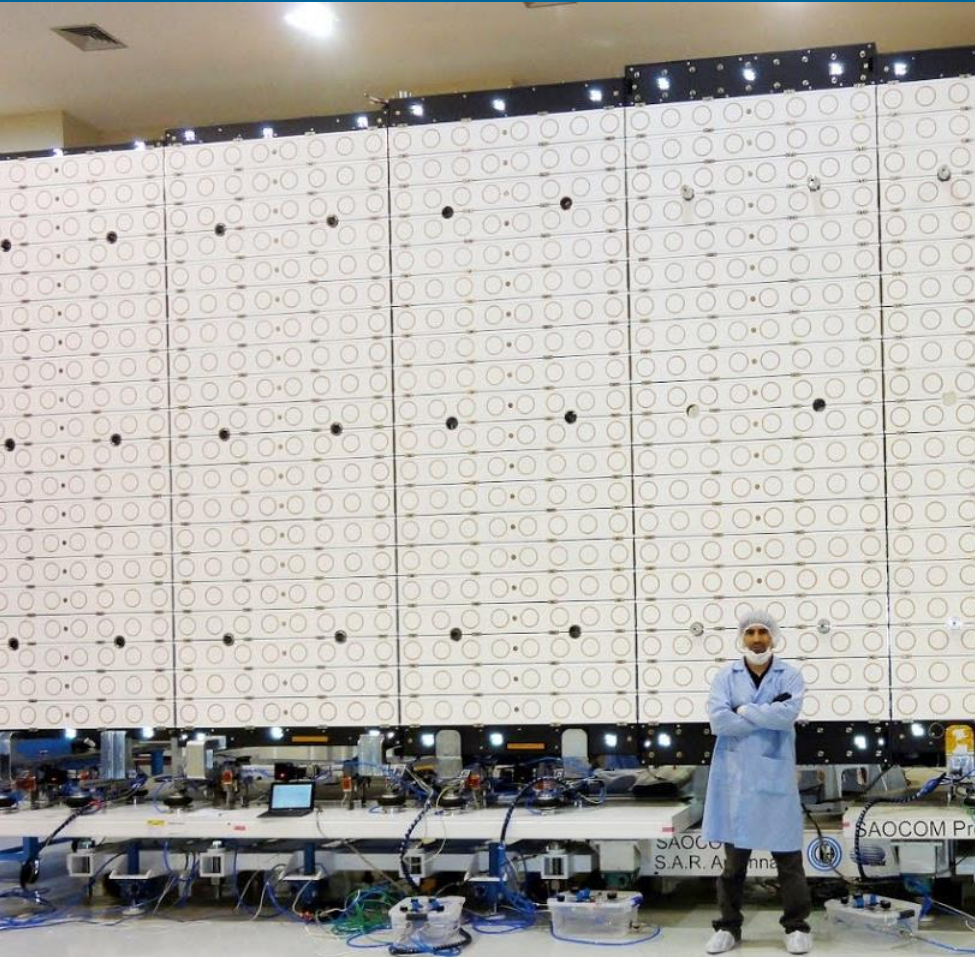


✓ Maps of anomalies and inter-seasonal mean yield scenarios for the main crops in Pampas Region (wheat, maize, soybean).

Free technological solutions for sharing maps

- **GEOCatalog of metadata:** **GeoNetwork** opensource
- **GEOServices web under standards of the OGC:** **GeoServer**
- **GEOPortal: non-expert users or without GIS**





Polarimetric L-band SAR

- SAOCOM 1A (2018)
- SAOCOM 1B (2020)

+ Facilities

+ Applications

Catalog: Authenticated users

- Downloads
- New acquisitions

<https://catalog.saocom.conae.gov.ar>

SAOCOM Catalog

catalog.saocom.conae.gov.ar/catalog/#/

Search

ROI: 15588.01 km² ×

Acquisition date ↓ 53 Results

	EOL1CSARSA01A588417 Mar 25, 2020 10:19:04 UTC L1C STRIPMAP S6 DPHHHV ASCENDING RIGHT
	EOL1CSARSA01A588499 Mar 25, 2020 10:18:54 UTC L1C STRIPMAP S6 DPHHHV ASCENDING RIGHT
	EOL1CSARSA01A588817 Mar 25, 2020 10:19:13 UTC L1C STRIPMAP S6 DPHHHV ASCENDING RIGHT
	EOL1DSARSA01A603165 Sep 15, 2019 10:19:11 UTC L1D STRIPMAP S5 DPHHHV ASCENDING RIGHT
	EOL1DSARSA01A603212 Sep 15, 2019 10:19:18 UTC L1D STRIPMAP S5 DPHHHV ASCENDING RIGHT
	EOL1CSARSA01A603202 Sep 15, 2019 10:19:19 UTC L1C STRIPMAP S5 DPHHHV ASCENDING RIGHT

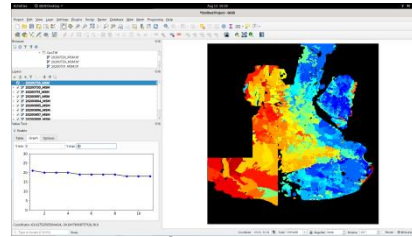
FOI 1CSARSA01A603255

10/53

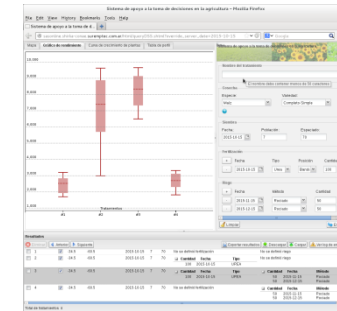
SAOCOM enables Surface Soil Moisture (SM) monitoring at plot scale.

The project promotes to add value by releasing open access products.

✓ Root soil water content.



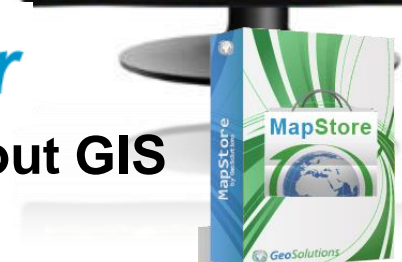
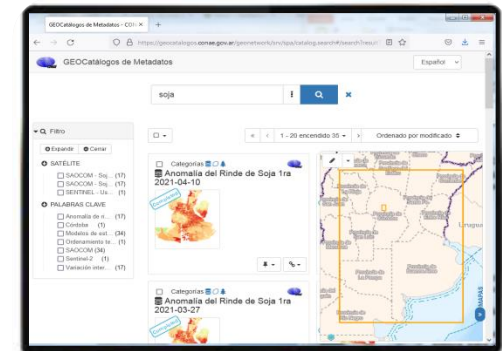
✓ Decision support systems for agriculture.



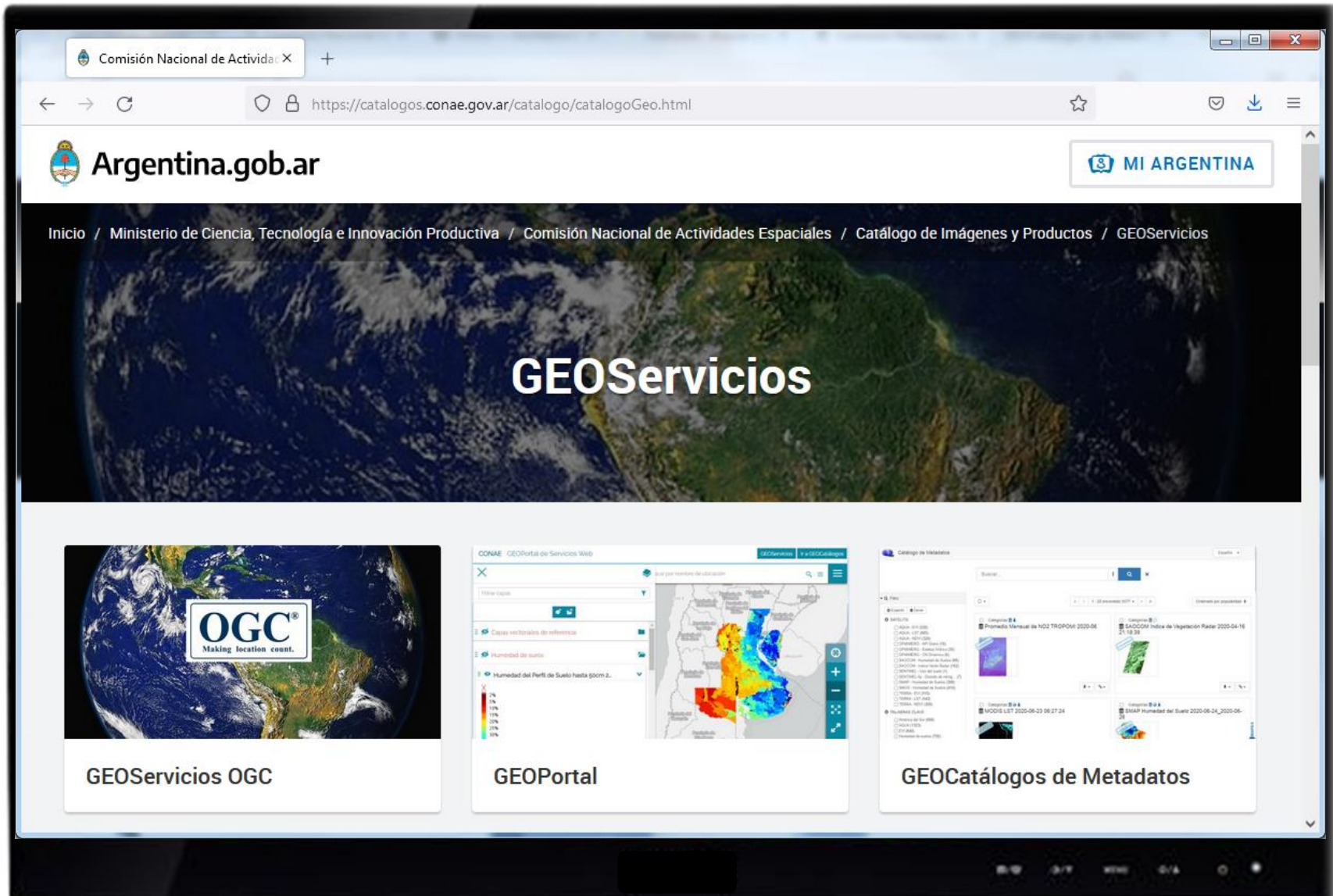
✓ Maps of anomalies and inter-seasonal mean yield scenarios for the main crops in Pampas Region (wheat, maize, soybean).

Free technological solutions for sharing maps

- **GEOCatalog of metadata:** **GeoNetwork** opensource
- **GEOServices web under standards of the OGC:** **GeoServer**
- **GEOPortal: non-expert users or without GIS**



<https://catalogos.conae.gov.ar/catalogo/catalogoGeo.html>

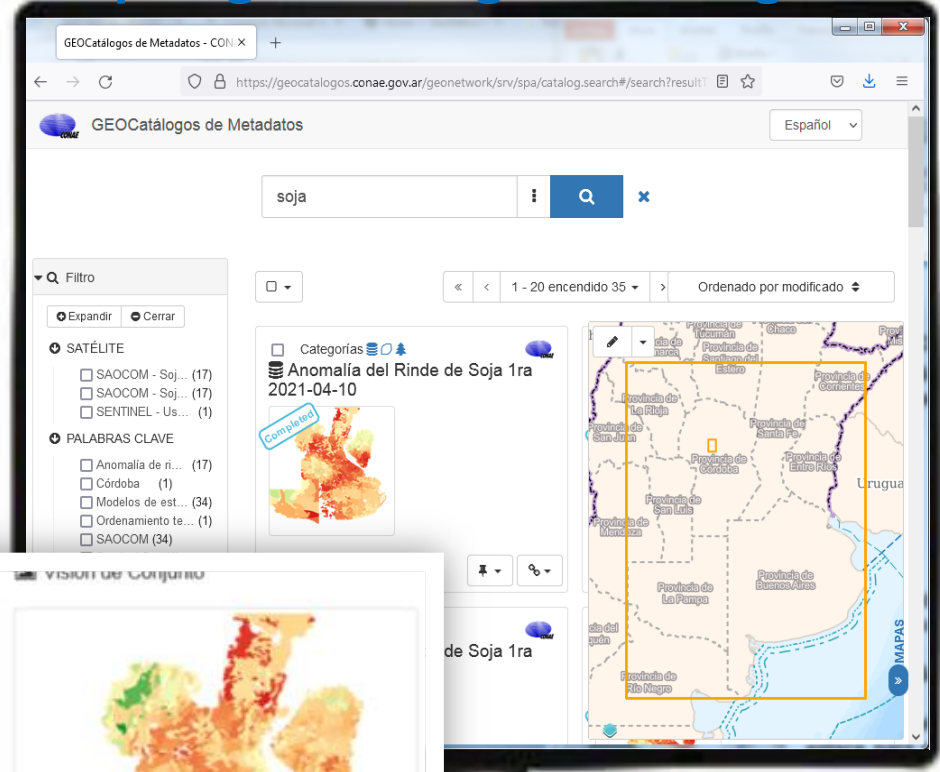


The screenshot shows a web browser displaying the 'Argentina.gob.ar' website. The main heading is 'GEOservicios'. Below the heading, there are three preview cards:

- GEOservicios OGC:** A card featuring the OGC logo with the tagline 'Making location count.' and a satellite image of Earth.
- GEOPortal:** A card showing a screenshot of a web portal interface with a map of Argentina and various data layers.
- GEOCatálogos de Metadatos:** A card showing a screenshot of a metadata catalog interface with search filters and a list of data items.

<https://geocatalogos.conae.gov.ar/>

- Example of the available products for the 2020/21 soybean campaign.
- GIS software is mandatory.



Variación del Rinde de Soja 1ra 2020-12-19

Mapa de variación interanual para la producción de soja de primera calculado a partir de escenarios de rinde estimados por zonas homogéneas. Se toma de referencia la campaña del año anterior asignando a su producción 100 unidades. Los escenarios representan el rinde al final de la campaña como una distribución de valores. La variación interanual se calcula considerando la mediana de la distribución.

Completad

Descargas y enlaces



La información se puede obtener mediante la descarga directa desde internet.

Abrir enlace

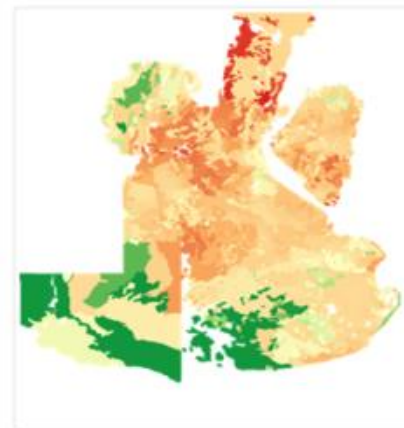
Recurso para Descargar https://geodescargas.conae.gov.ar/descargas/productos/CONAE_MOD_MHS_DSS_ASB_20201219_v001.zip



Acceso a documentos

Abrir enlace

Documentación asociada a Rinde de Soja 1ra
https://documentoside.conae.gov.ar/productos/CONAE_MOD_MHS_DSS_ASB_20201219_v001



Extensión espacial

Extensión espacial

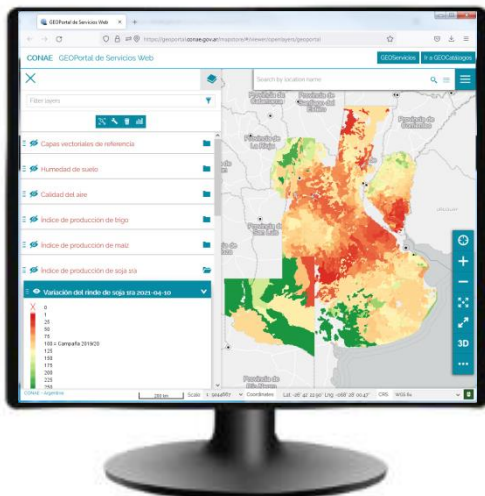
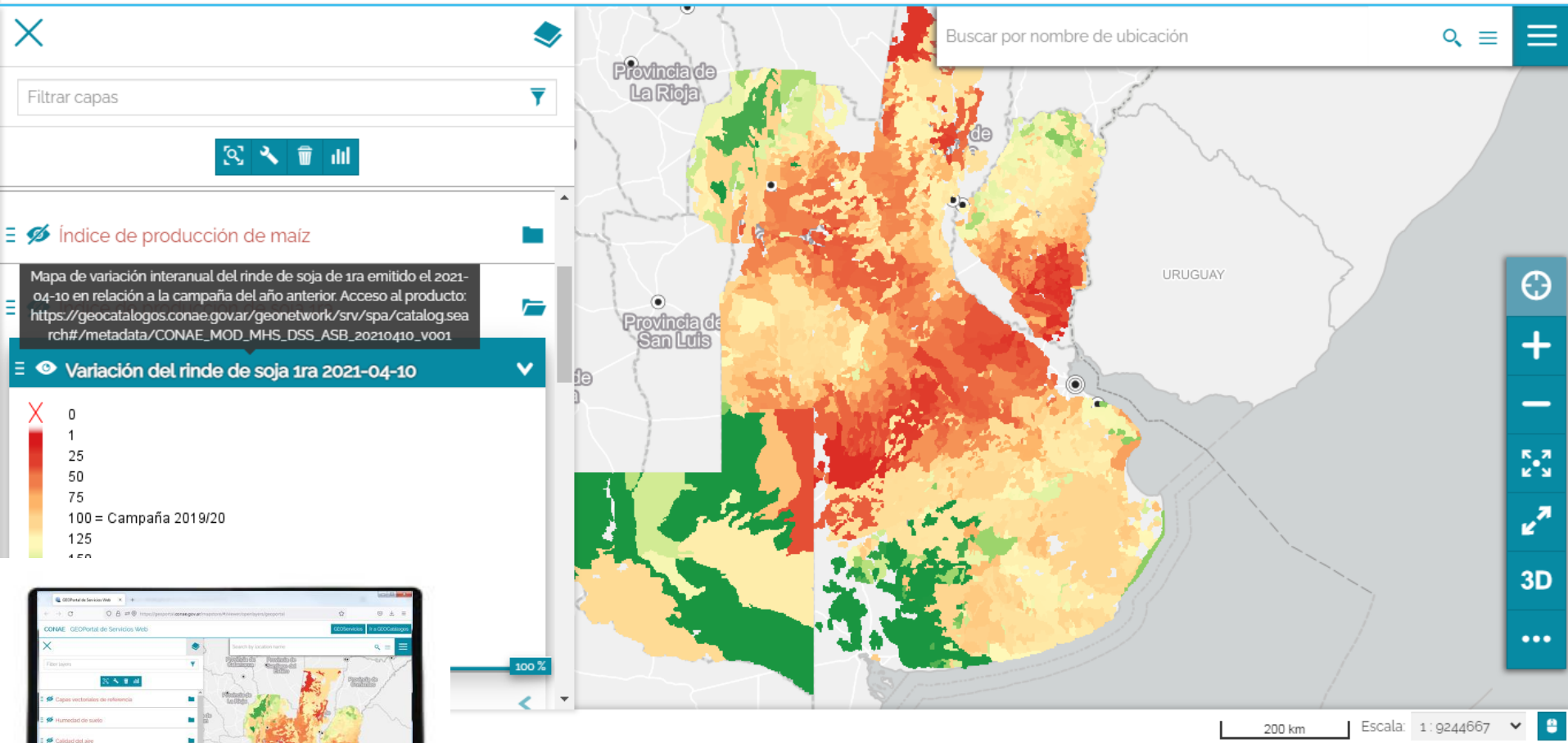
- (Left) After choosing a product.
- The arrow signals the link for downloading.

<https://geoservicios3.conae.gov.ar/geoserver/Cultivos/wms>

Example of **WMS** GEOservice visualization with **QGIS** software for the map of anomalies in the maize yield mean scenario.

Latest data version is ensured

New connection WMS:
Layer -> Add Layer -> Add WMS/WMTS Layer



Example for the inter-seasonal soybean map displayed on the GEOPortal focused on **non-expert users**.

- A system for making mean yield scenarios maps based on normal or previous year estimates for wheat, maize and soybean is available.
- 3 data access gates are available: GEOCatalog of metadata, GEOPortal and WMS GEOServices.
- Maps are weekly updated.
- Value is add to SAOCOM mission with high level products which provide timely and valuable support information to stakeholders focused on the Pampas Region agriculture sector.

Thank you very much!!

<https://www.argentina.gob.ar/ciencia/conae>