



# WGISS-56

HOSTED BY CNES – PARIS FRANCE

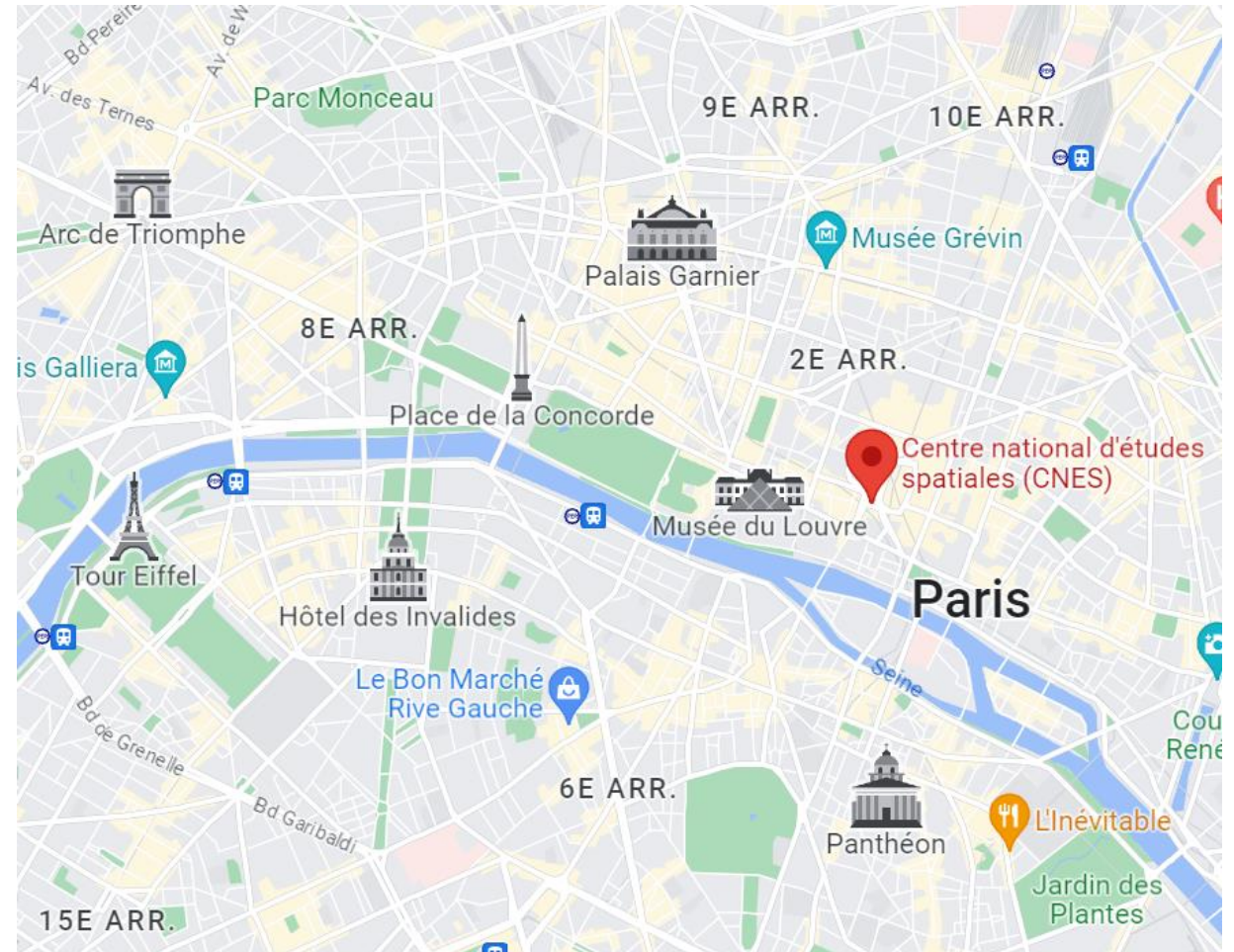
OCTOBER 24-26 2023



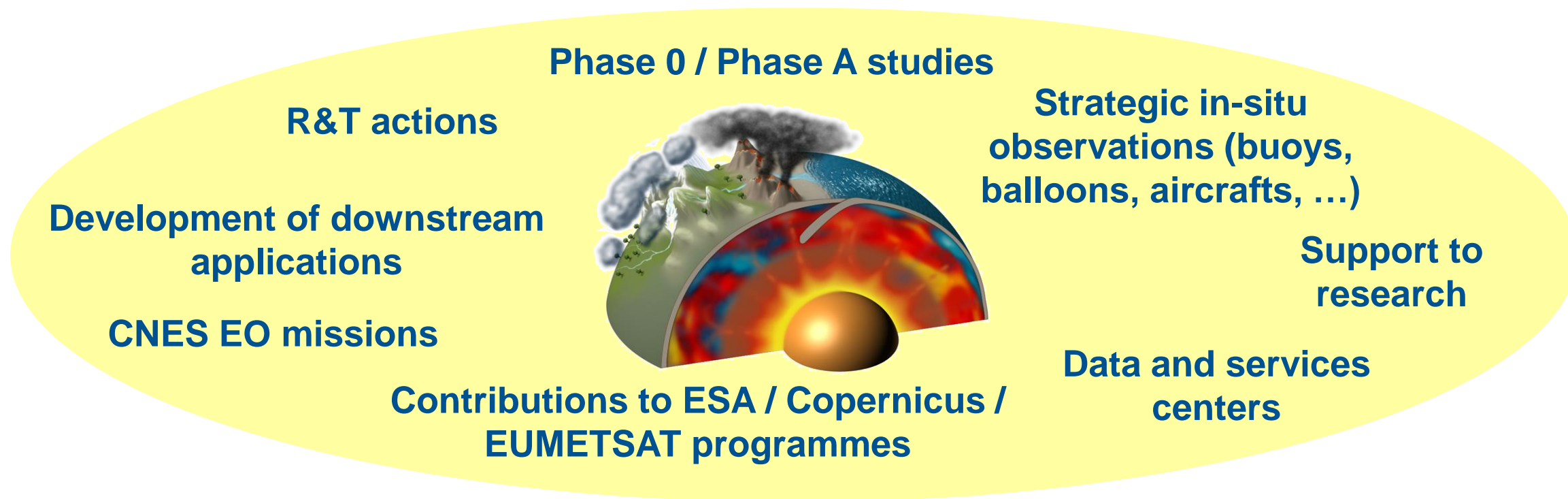
Richard Moreno  
CNES

❖ **WGISS-56 at the heart of Paris**

- CNES Headquarter
- 'Salle de l'Espace'



- Maison Albar Hôtels Le Pont Neuf
- Novotel Paris Les Halles
- Hôtel Ducs de Bourgogne
- Konfidentiel
- L'empire Paris
- Hôtel Ducs D'anjou
- Hôtel Louvre Saint Honoré
- Snob Hôtel
- Le Relais Des Halles
- Cheval Blanc Paris & Dior Spa Cheval Blanc Paris
- Hôtel Madame Rêve
- Le Relais du Louvre
- Hotel Victoires Opera



- ◆ A consistent set of actions aiming at covering all facets of the Earth System
- ◆ Collaborations / Partnerships
- ◆ Necessary combination of satellite + in-situ + model data
- ◆ From upstream (R&T) to downstream (applications)
- ◆ Guidance on strategy and level of support provided by scientific committees (CPS / TOSCA)

### 3 recognized areas of excellence

#### Imaging



SPOT



Helios



Pléiades



Venüs



Trishna



CO3D

#### Altimetry



TOPEX-POSEIDON

JASON 1, 2 and 3

ALTIKA-SARAL

SWOT

CFOSAT

#### Sounding the atmosphere



Parosol

Calipso

IASI

Megha-Tropiques

Microcarb

IASI NG

Merlin

❖ **Beyond mission development and operations :**

- Develop wider use of data with a guarantee of quality, for science, for downstream sector development, and defense needs

❖ **4 data centers :**

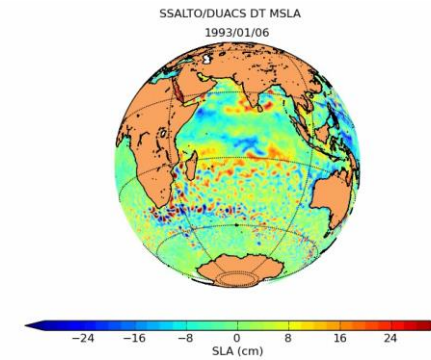
- Theia (land) / Odatis (ocean) / Form@ter (solid Earth) / Aeris (atmosphere)

❖ **Science project funding**

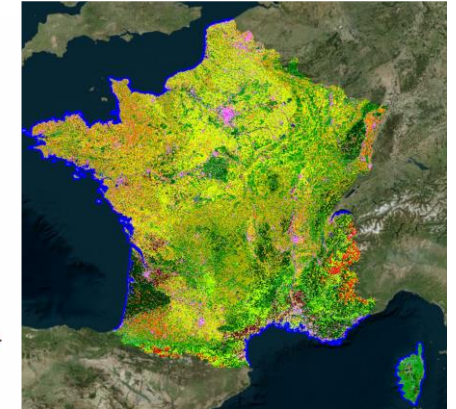
- CNES projects science teams.
- Satellite Earth observation science

❖ **Applications project funding**

- From on-going, planned missions, private initiatives to applications (eg. SMOS, BIOMASS, SWOT, Trishna...)
- From societal needs towards Decision Making tools (Space Climate Observatory initiative)

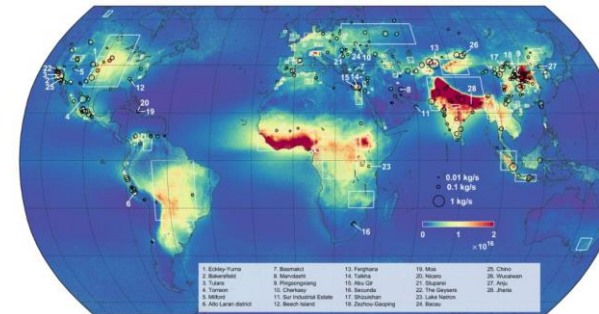


Aviso multi-mission products

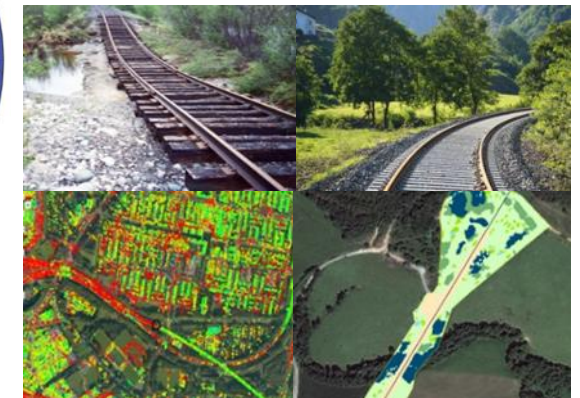


Theia land cover map

<http://www.theia-land.fr/fr/ces-occupation-sols>



IASI-based NH3 maps  
Van Damme et al, 2018



Railway monitoring (SNCF-CNES)