

CEOS Water Portal Overview and Operation Status

WGISS-36
ESA/ESRIN, Frascati, Italy

JAXA/Mission Operations System Office
Shinichi Sekioka

Contents

- Updates
 - New User Interface rolled out
 - OpenSearch client capability enabled
-> Search NASA ECHO
 - Coordination with NOAA National Climatic Data Center (NCDC) for future collaboration
- Milestone

Updates(detail)

- New User Interface has been released on May 20th.
- Moved to amazon EC2 cloud on July 16th.
- Two new data centers
 - NASA ECHO (OpenSearch)
 - CUAHSI (REST/WaterML2)
 - CUAHSI (WOF/WaterML) (planned)
- PIP (Project Implementation Plan) document updated

The screenshot shows the CEOS Water Portal web application. At the top, there is a navigation menu with options: About, Registration, Documents, link, Sign In, and contact us. Below the menu, there are search filters for Variables (Atmospheric Surface, Atmospheric Upper-Air, Atmospheric Composition, Oceanic, Terrestrial, Other) and Use Cases (No Variable Selected, Share my Use Case). The main content area features a world map titled 'Locations Matched' with various colored markers representing observation sites. To the right of the map is a 'Project and Data Type' section with checkboxes for Station Data (AWCI In-situ, AWCI MOLTS, CEOP In-situ, CEOP Satellite, Reference Sites, Monsoon Regions, CEOP MOLTS, CUAHSI In-situ, FLUXNET, GEMS In-situ), Global Data (CEOP Gridded Model Output, GPCC, NASA AIRS, NASA GRACE, GLOWASIS Gridded Model Output, GLOWASIS Satellite), and Broker Data (No Variable Selected). At the bottom, there are two summary boxes: 'Datasets Matched' (No Site Selected) and 'Granules Matched' (No Datasets Selected).

(1) Search Options by Variable Category

(5) Use Cases

(3) Observation Sites matched by Selected Options (1)

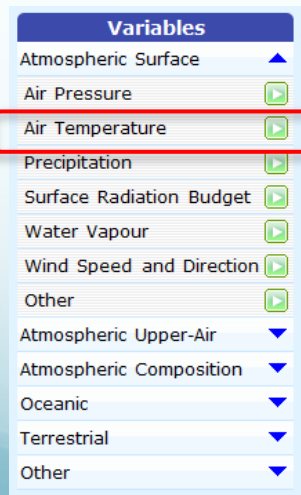
Menu

(2) Dataset List for Selected Search Options (1)

(4) Details of Selected data by (2) & (3)

OpenSearch Client Capability Enabled

- “OpenSearchLight” javascript library is used (<https://github.com/nsidc/OpenSearchlight>)
- 2-step search enabled
 - Dataset-level search
 - Granule-level search
- OpenSearch server ? → NASA ECHO
- Category Name (ie. ECV variable name) goes into OpenSearch freetext search parameter {searchTerms}.
 - “Air Temperature” → air+temperature → air AND temperature
 - Phrasal search support at server side is desired.



Select a Category

```
https://api.echo.nasa.gov:443/opensearch/datasets.atom?keyword=air+temperature&instrument=&satellite=&boundingBox=&geometry=&placeName=&startTime=&endTime=&cursor=1&numberOfResults=10&uid=&clientId=ceoswaterportal
```



CEOS Water Portal

OpenSearch query



Search and Access NASA ECHO datasets (1/2)

(1) Air Temperature
Precipitation

Select a category

(2) NASA ECHO

Select "NASA ECHO"

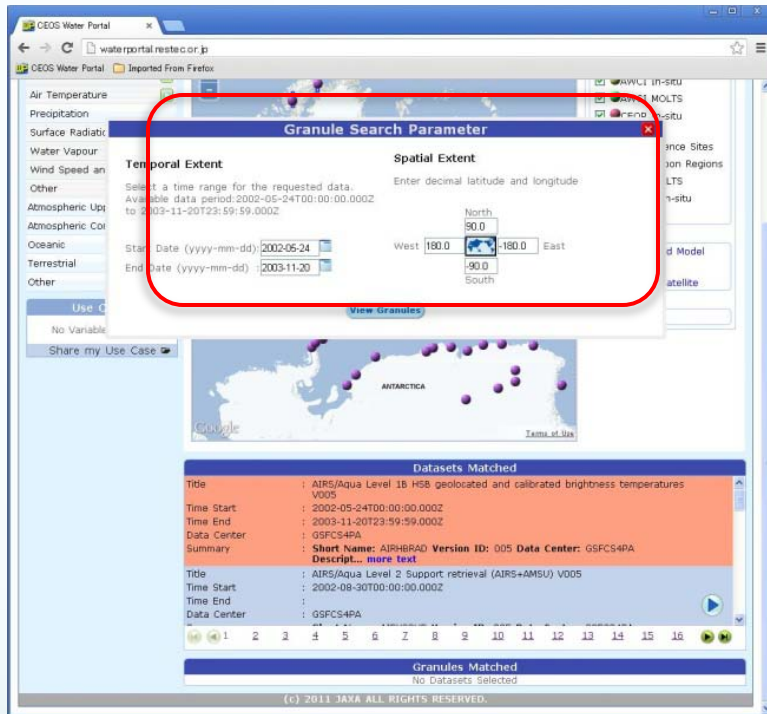
(3) Dataset-level search results

Datasets Matched

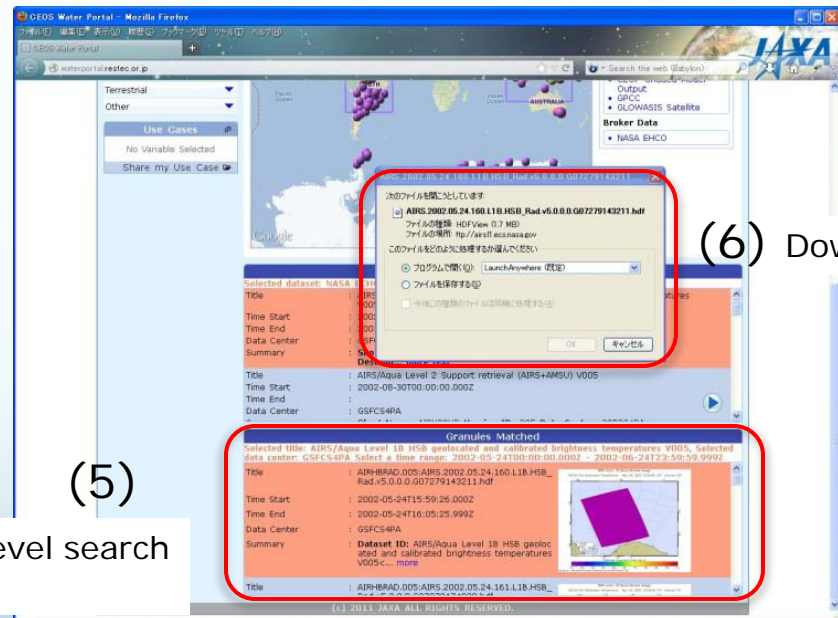
Title	: AIRS/Aqua Level 1B HSB geolocated and calibrated brightness temperatures V005
Time Start	: 2002-05-24T00:00:00.000Z
Time End	: 2003-11-20T23:59:59.000Z
Data Center	: GSFC4PA
Summary	: Short Name: AIRS#BRAD Version ID: 005 Data Center: GSFC4PA

Title	: AIRS/Aqua Level 2 Support retrieval (AIRS+AMSU) V005
Time Start	: 2002-08-30T00:00:00.000Z
Time End	:
Data Center	: GSFC4PA

Search and Access NASA ECHO datasets (2/2)



(4) Set a temporal and geographical extent for granule-level search



(6) Download

(5)

Granule-level search results

Coordination with NOAA National Climatic Data Center (NCDC) for future collaboration

- Held meeting in NOAA NCDC in August
- Standard interface will be used
 - CSW for catalog (TBD)
 - OPeNDAP for data

Milestone

